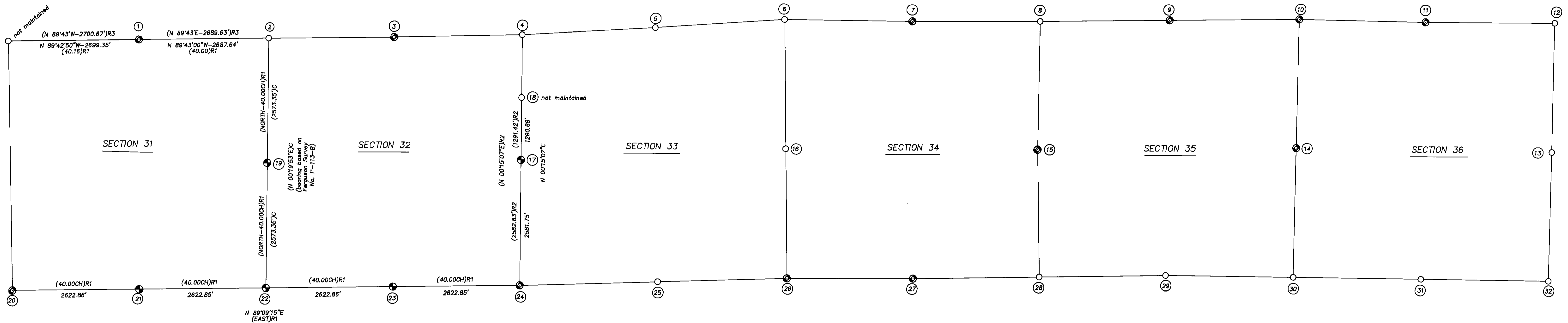
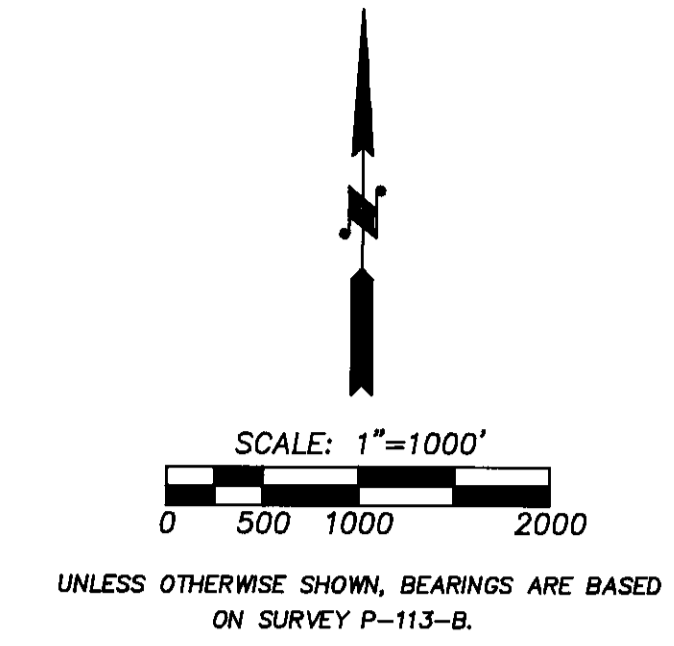


RECORD OF SURVEY PLAT

SECTIONS 31 THROUGH 36, T4N., R37E., W.M., UMATILLA COUNTY, OREGON
PREPARED FOR: UMATILLA COUNTY



NOTES: FOR ADDITIONAL INFORMATION, SEE CORNER RECORDS FILED SEPARATELY

- 1 FOUND 1/2" IRON PIN FROM SURVEY NO. I-153-C.
- 2 FOUND RAILROAD SPIKE 1 1/2" UNDER ASPHALT IN STATE HIGHWAY. THIS RAILROAD SPIKE HAS BEEN USED ON ALL RECENT SURVEYS AS THE N.E. CORNER OF SECTION 31.
- 3 FOUND SET STONE, BEING THE APPARENT PERPETUATION OF THE ORIGINAL CORNER MONUMENT. THIS STONE HAS BEEN USED ON ALL RECENT SURVEYS AS THE N 1/4 CORNER OF SECTION 32.
- 4 FOUND 2 1/2" BRASS CAP ON 2 1/2" G.I.P., (SURVEY NO. P-113-B).
- 5 FOUND 2 1/2" BRASS CAP ON 2 1/2" G.I.P., (SURVEY NO. P-113-B).
- 6 FOUND 2 1/2" BRASS CAP ON 1 1/4" G.I.P., SET BY PREVIOUS COUNTY SURVEYOR. I FIND NO RECORD OF REMONUMENTATION OF THIS CORNER IN COUNTY RECORDS.
- 7 FOUND NAIL IN SMALL STONE MOUND, SUPPORTED BY EVIDENCE OF THE TWO ORIGINAL BEARING TREES.
- 8 FOUND 2" BRASS CAP ON 1 1/4" G.I.P., SET BY PLS 422. I FIND NO RECORD OF THIS CORNER REMONUMENTATION IN COUNTY RECORDS. THIS CORNER MONUMENT IS SUPPORTED BY EXISTING EVIDENCE OF 3 OF THE ORIGINAL BEARING TREES.
- 9 FOUND 2" O.D. IRON PIPE WHICH HAS BEEN IN USE AS THE N 1/4 OF SECTION 35 SINCE THE 1950'S. NO EVIDENCE REMAINS OF THE ORIGINAL CORNER ACCESSORIES.
- 10 FOUND AXEL SHAFT WITH 3" TOP AND 1 1/4" SHAFT, 32" LONG, AS NOTED ON 1950 SURVEY NO. Q-761-B, AND SEVERAL MORE RECENT RECORDED SURVEYS.
- 11 FOUND 14" X 10" X 8" STONE MARKED "X" ON TOP AT FENCE CORNER WITH FENCES EAST-WEST AND NORTH. THIS STONE WAS NOTED ON STORM SURVEY Q-741-C. REMAINS OF THE ORIGINAL BEARING TREES STILL EXIST.
- 12 FOUND 2 1/2" GLO BRASS CAP ON 2" G.I.P.. THIS MONUMENT, PLACED IN 1939, MARKS THE POSITION OF THE ORIGINAL CORNER.
- 13 FOUND 3 1/4" ALUM. CAP ON 2" G.I.P.. THIS CORNER WAS REMONUMENTED BY THE OREGON STATE FORESTRY DEPARTMENT, FROM ORIGINAL EVIDENCE, IN 1984, (SURVEY NO. 84-106-B).
- 14 FOUND 2 1/2" BRASS CAP ON ON 1 1/4" G.I.P., RE-ESTABLISHED ON SURVEY NO. R-45-C.
- 15 FOUND 2" O.D. PIPE, 1" BELOW GROUND, NOTED ON ALL RECENT SURVEYS AS THE PERPETUATION OF THE LOCATION OF THE EAST 1/4 OF SECTION 34.
- 16 FOUND 2 1/2" BRASS CAP ON 2 1/2" G.I.P., AS RE-ESTABLISHED ON SURVEY NO. P-113-B.

- 17 RE-ESTABLISHED CORNER BY SINGLE PROPORTION MEASUREMENT BETWEEN THE N 1/16TH CORNER COMMON TO SECTIONS 32 AND 33 AND THE SOUTHWEST CORNER OF SECTION 33.
- 18 FOUND 2 1/2" BRASS CAP ON 1 1/4" G.I.P., ESTABLISHED UNDER SURVEY NO. P-113-B.
- 19 RE-ESTABLISHED CORNER BY SINGLE PROPORTION MEASUREMENT BETWEEN THE NE CORNER AND SE CORNER OF SECTION 31. MONUMENT REPORTED IN SURVEY I-153-C BEARS S 21°17'E, 6.52'.
- 20 FOUND 21" X 16" X 6" STONE MARKED "X" ON TOP, USED ON ALL RECENT SURVEYS IN THE AREA.
- 21 RE-ESTABLISHED CORNER BY SINGLE PROPORTION MEASUREMENT BETWEEN THE SW CORNER OF SECTION 31, AND THE SE CORNER OF SECTION 32. MONUMENT REPORTED IN SURVEY I-153-C BEARS S 01°15'W, 6.46'.
- 22 RE-ESTABLISHED CORNER BY SINGLE PROPORTION MEASUREMENT BETWEEN THE SW CORNER OF SECTION 31, AND THE SE CORNER OF SECTION 32. MONUMENT REPORTED IN SURVEY I-153-C BEARS S 06°51'E, 12.31'.
- 23 RE-ESTABLISHED CORNER BY SINGLE PROPORTION MEASUREMENT BETWEEN THE SW CORNER OF SECTION 31, AND THE SE CORNER OF SECTION 32. MONUMENT REPORTED IN SURVEY I-153-C BEARS S 21°59'E, 18.09'.
- 24 FOUND 12" X 9" X 4" STONE MARKED WITH 6 GROOVES ON THE NORTH AND SOUTH SIDES. THIS STONE IS THE APPARENT PERPETUATION OF THE LOCATION OF THE ORIGINAL CORNER.
- 25 FOUND 2 1/2" BRASS CAP ON 2 1/2" G.I.P., RE-ESTABLISHED UNDER SURVEY NO. P-113-B.
- 26 FOUND 24" X 10" X 4" SET STONE. THIS STONE HAS BEEN USED AS THE SECTION CORNER ON RECENT SURVEYS IN THE AREA, AND IS THE APPARENT PERPETUATION OF THE LOCATION OF THE ORIGINAL CORNER.
- 27 FOUND MOUND OF STONES WITH A NAIL SET IN THE MIDDLE. THIS MOUND WAS RECOVERED AND USED AS THE 1/4 CORNER IN SURVEY P-113-B.
- 28 FOUND 3 1/4" BLM BRASS CAP ON 2 1/2" G.I.P.. THIS CORNER WAS RECOVERED AND REMONUMENTED BY BLM IN 1980.
- 29 FOUND 2 1/2" BRASS CAP ON 2 1/2" G.I.P.. THIS CORNER WAS REMONUMENTED FROM EXISTING EVIDENCE UNDER SURVEY L-56-B.
- 30 FOUND 2 1/2" BRASS CAP ON 2 1/2" G.I.P., RE-ESTABLISHED BY PROPORTIONATE MEASURE UNDER SURVEY L-56-B.
- 31 FOUND 2 1/2" BRASS CAP ON 2 1/2" G.I.P., RE-ESTABLISHED BY PROPORTIONATE MEASURE UNDER SURVEY L-56-B.
- 32 FOUND 3" BRASS CAP ON 2 1/2" IRON PIPE, REFERENCED BY SURVEY NO. L-56-B. EVIDENCE OF 2 OF THE ORIGINAL BEARING TREES STILL REMAIN.

NARRATIVE OF SURVEY

THE PURPOSE OF THIS SURVEY WAS TO RECOVER, RE-ESTABLISH, REMONUMENT OR MAINTAIN CERTAIN PUBLIC LAND CORNERS IN SECTIONS 31 THROUGH 36 OF TOWNSHIP 4 NORTH, RANGE 37 EAST, W.M.. THE PROJECT WAS AUTHORIZED BY THE UMATILLA COUNTY BOARD OF COMMISSIONERS, AND WAS FUNDED BY THE PUBLIC LAND CORNER MONUMENTATION FUND.

IN ADDITION TO THIS RECORD OF SURVEY PLAT, CORNER CERTIFICATES FOR EACH CORNER REMONUMENTED OR MAINTAINED ARE FILED SEPARATELY IN THE COUNTY SURVEYOR'S OFFICE.

TRAVERSE MEASUREMENTS WERE MADE ALONG THE SOUTH LINES OF SECTIONS 31 AND 32, ALONG THE NORTH LINE OF SECTION 31, AND ALONG THE LINE BETWEEN SECTIONS 32 AND 33. OBSERVED MEASUREMENTS ARE REPORTED ON THE RECORD OF SURVEY PLAT. IN OTHER AREAS OF THE PROJECT, EXISTING CORNER MONUMENTS WERE EVALUATED AND UPGRADED WITHOUT CONFIRMATION MEASUREMENTS BETWEEN ADJACENT CORNERS. TRAVERSE MEASUREMENTS WERE MADE WITH A LIETZ SET 38 AUTOMATIC TOTAL STATION, WITH FIELD NOTES COLLECTED WITH A LIETZ SDR 22 ELECTRONIC FIELD BOOK. CORNER MONUMENTATION AND MAINTENANCE MEASUREMENTS WERE MADE WITH A BRUNTON POKKET TRANSIT AND STEEL TAPE.

THE SOUTH 1/4 CORNERS OF SECTIONS 31 AND 32, THE SOUTHEAST CORNER OF SECTION 31, AND THE EAST 1/4 CORNER OF SECTION 31 WERE DECLARED LOST AFTER A THOROUGH AND DILIGENT SEARCH AND WERE RE-ESTABLISHED AS SHOWN ON THE RECORD OF SURVEY PLAT.

LEGEND

- - FOUND EXISTING CORNER MONUMENT IN PLACE, MAINTAINED CORNER. SEE CORNER RECORD FILED SEPARATELY.
- ⊙ - FOUND CORNER MONUMENT IN PLACE, UPGRADED MONUMENT BY REPLACING WITH 2 1/2" BRASS CAP ON 1 1/4" G.I.P.. SEE CORNER RECORD FILED SEPARATELY.
- ⊕ - RE-ESTABLISHED CORNER POSITION BY SURVEY AND MONUMENTED WITH 2 1/2" BRASS CAP ON 1 1/4" X 30" GALVANIZED IRON PIPE. SEE CORNER RECORD FILED SEPARATELY.
- ① - SEE NOTE ON THIS MAP.
- (XOX) - RECORD MEASUREMENT USED IN CORNER RE-ESTABLISHMENT. SOURCE OF RECORD INDICATED ON THIS MAP.
- (XOX)R1 - RECORD BY W.H. ODELL, U.S. DEPUTY SURVEYOR, UNDER CONTRACT NO. 114, DATED JULY 2, 1866.
- (XOX)R2 - RECORD BY D.M. FERGUSON, SURVEY NO. P-113-B.
- (XOX)R3 - RECORD BY STREAMER, SURVEY NO. I-153-C.
- (XOX)C - CALCULATED BEARINGS AND DISTANCES BASED ON SURVEY S-153-B, ROTATED TO BEARINGS ON SURVEY NO. P-113-B.

REGISTERED PROFESSIONAL LAND SURVEYOR

William R. Wells

OREGON
JULY 22, 1977
WILLIAM R. WELLS
1106

WILLIAM R. WELLS, PLS
357 N.E. HWY. 11
P.O. BOX 1696
PENDLETON, ORE. 97801
PHONE: (503) 276-6362

DATE: 8/8/91 DR BY: WQ
CK BY: WRW NO: 89-67

RECEIVED BY
Umatilla County Surveyor
Date: 8-91
Road No: 25-C
No: 91-25-C
PROJECT:
PUBLIC LAND SURVEY
CORNER REMONUMENTATION
AND MAINTENANCE
SECTIONS 31 THROUGH 36
T4N., R37E., W.M.
UMATILLA COUNTY, OREGON

107