

**NARRATIVE**

This survey is for Oregon State Highway project Cooper Creek/Ukiah Hilgard Highway to establish horizontal control.

Three traverse's were ran tying into G.P.S. points and found monuments. The first, a connecting traverse (closure 1:158689), ran between Fore and Batt which included traverse point numbers 1 through 17, and tied section corner T4S R31E S16/S15/S21/S22.

The second a closed loop traverse, point numbers 18 through 23 utilized G.P.S. point BATT and its azimuth mark (closure 1:43188) it also tied into  $\frac{1}{4}$  corner T4S R31E S4/S9.

The third also a closed loop traverse, point number 24 through 35 utilized G.P.S. point FORE and its azimuth mark (closure 1:19286) it also tied into section corner T5S R31E S8/S9/S16/S17 and  $\frac{1}{4}$  corner T5S R31E S9/S16.

**BASIS OF BEARING**

G.P.S. points BATT and FORE had Oregon State grid north zone coordinates established, then corrected to LDP, using a correction factor of .999727849. The coordinates are balanced and the year of the Datum is 1983.

Bearing between BATT and Azimuth BATT is N5-44-33W.  
Bearing between FORE and Azimuth FORE is N12-20-14E.

**COORDINATE TABLE**

Point #	Northing	Eastng	Bearing	Distance	RT.	LT.
1	574173.768	8599638.822	N 51-12-87.3 W	384.599		58.8
1000	574364.623	8599489.649				
1	574173.768	8599638.822	N 38-62-63.8 W	241.748	48.1	
1001	574362.638	8599479.913				
2	571166.486	8599933.255	N 3-83-13.7 W	1984.787		49.6
1002	573148.375	8599827.552				
2	571166.486	8599933.255	N 5-56-23.8 W	1982.648		50.3
1003	573138.489	8599728.878				
5	563851.9280	8599489.3419	N 2-24-85.5 W	2518.886		48.5
1004	566368.521	8599594.558				
5	563851.9280	8599489.3419	N 6-33-84.8 W	918.248		49.9
1005	564756.225	8599385.491				
5	564756.225	8599489.3419	N 13-12-37.7 W	537.377		48.7
1006	564375.876	8599366.535				
8	559631.8943	8602128.1419	N 55-43-81.3 W	254.686		48.2
1007	559775.389	8601989.768				
13	553348.6782	8603978.5938	N 4-14-55.5 W	826.328		78.4
1008	554164.735	8603989.371				
13	553348.6782	8603978.5938	S 5-38-47.8 W	3184.235		38.8
1009	558171.172	8603664.675				
16	545195.4728	8603455.7458	N 12-52-81.6 W	499.8		48.3
1010	545681.943	8603344.622				
16	545195.4728	8603455.7458	N 11-45-46.3 W	496.568		49.4
1011	545681.687	8603354.511				
1	574173.768	8599638.822	S 5-44-33.98 E	3822.451	51.2	
2	571166.486	8599933.255	S 11-53-81.97 E	3288.5509	48.3	
3	567948.4187	8600618.4626	S 38-8118.83 W	1613.9236	38.8	
4	566677.8884	8599616.3473	S 2-34-26.66 E	2827.9419		
5	563851.9280	8599489.3419	S 18-33-33.68 E	1174.3321	38.2	
6	562738.6595	8599863.1168	S 37-55-59.15 E	1176.5668		37.3
7	561818.6678	8600586.3998	S 35-88-36.75 E	2664.4728		50.3
8	559631.8943	8602128.1419	S 34-85-39.65 E	1168.1578	37.4	
9	558664.5245	8602774.9613	S 34-41-89.33 E	1683.6735	36.4	
10	557345.8497	8603687.5758	S 25-38-48.48 E	1883.4933		55.8
11	556367.9968	8604154.2233	S 1-56-28.76 W	748.6232	48.4	
12	555627.7979	8604129.1339	S 3-57-55.24 W	2292.6881		47.3
13	553348.6782	8603978.5938	S 3-57-89.83 W	3857.9227		46.8
14	550298.8295	8603759.7998	S 3-56-51.16 W	3288.8176		47.1
15	547889.8147	8603533.3873	S 2-27-85.32 W	1815.2839		94.1
16	545195.4728	8603455.7458	S 12-28-14.34 W	5856.241		77.7
17	548256.8258	8602375.4818				
1	574173.768	8599638.822	N 14-25-86.22 W	3221.2774		
18	577293.5858	8598828.7213	N 22-58-38.72 W	1118.8619		
19	578315.5988	8598395.4279	N 74-45-49.11 W	698.7962		
20	578499.2355	8597721.1944	S 52-83-52.97 E	1843.1292		
21	577857.9498	8598543.9163	S 19-24-82.33 E	742.6358		
22	577157.4817	8598798.5998	S 15-43-38.58 E	3899.7617		
1	571173.768	8599638.822				
17	548256.8258	8602375.4818	N 83-42-24.72 W	1549.1813		
24	548425.8388	8600835.5558	N 49-53-46.42 W	1621.6658		
25	541478.4733	8599595.1775	S 87-32-53.45 W	1898.2475		
26	541423.8333	8598585.9288	N 88-57-12.21 W	681.8852		
27	541538.9257	8597833.3158	N 83-88-36.38 W	251.8293		
28	541568.9982	8597583.2868	N 82-33-11.46 W	348.3192		
29	541685.8975	8597245.8381	S 89-38-49.83 W	688.8514		
30	541599.2527	8596557.8114	S 69-55-52.68 W	747.8189		
31	541342.7895	8595854.7867	N 33-53-83.76 W	865.3314		
32	542061.8767	8595372.3482	N 28-81-83.28 E	2514.8365		
33	544288.4778	8596553.2977	S 54-48-88.38 E	2692.7883		
34	542723.1591	8598758.8741	S 53-55-84.58 E	3327.5718		
35	548763.4872	8601439.3388	S 61-32-26.83 E	1864.7366		
17	548256.8258	8602375.4818				

Fnd. 3/4" Brass cap  
T4S R31E S4/S9  
Set By John E. Hollingsworth  
Survey # J-39-AX  
JUL. 9, 1965

SURVEY FOR  
OREGON STATE HIGHWAY DIVISION  
3812 ISLAND AVE.  
LA GRANDE OREGON 97858

COOPER CREEK. -  
UKIAH/HILGARD HIGHWAY  
HIGHWAY 395  
UMATILLA COUNTY

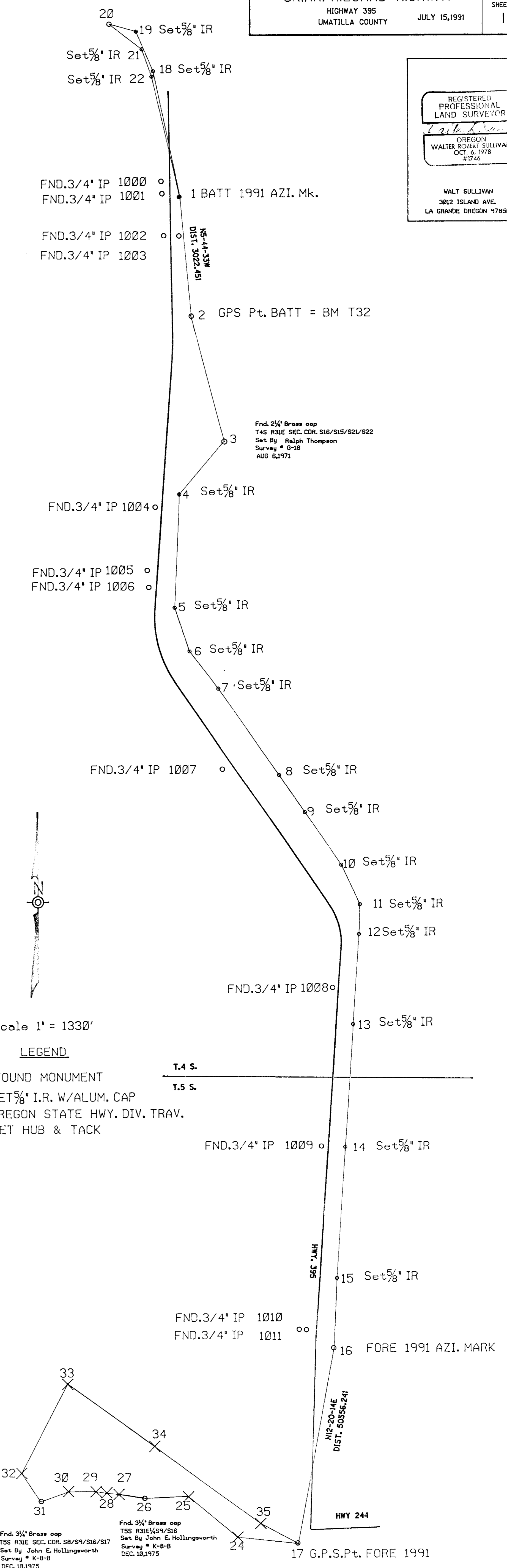
JULY 15, 1991

SHEET NO. 1  
TOTAL SHEETS 1

REGISTERED  
PROFESSIONAL  
LAND SURVEYOR

OREGON  
WALTER ROBERT SULLIVAN  
OCT. 6, 1978  
#1746

WALT SULLIVAN  
3812 ISLAND AVE.  
LA GRANDE OREGON 97858



**LEGEND**

- FOUND MONUMENT
- SET 5/8" I.R. W/ALUM. CAP
- OREGON STATE HWY. DIV. TRAV.
- × SET HUB & TACK

NO. 1