

BEARINGS ARE BASED ON A SOLAR OBSERVATION TAKEN 750 FEET EAST OF THE S.W. CORNER OF SECTION 24, T3N, R24E, W.M.

**LEGEND**

- SET 5/8" BY 30" IRON PIN WITH 1/2" YELLOW PLASTIC CAP MARKED "W.R. WELLS, PLS 1106", UNLESS OTHERWISE NOTED.
- ⊙ PUBLIC LAND CORNER REMONUMENTED WITH 2 1/2" BRASS CAP ON 1 1/2" BY 30" GALV. IRON PIPE. SEE CORNER RECORD FILED SEPARATELY.
- (XOX) MEASUREMENT RECORD FROM GENERAL LAND OFFICE SURVEY BY N. H. GATES, DEPUTY SURVEYOR, UNDER HIS CONTRACT NO. 84, DATED JULY 22, 1859.
- FENCES.

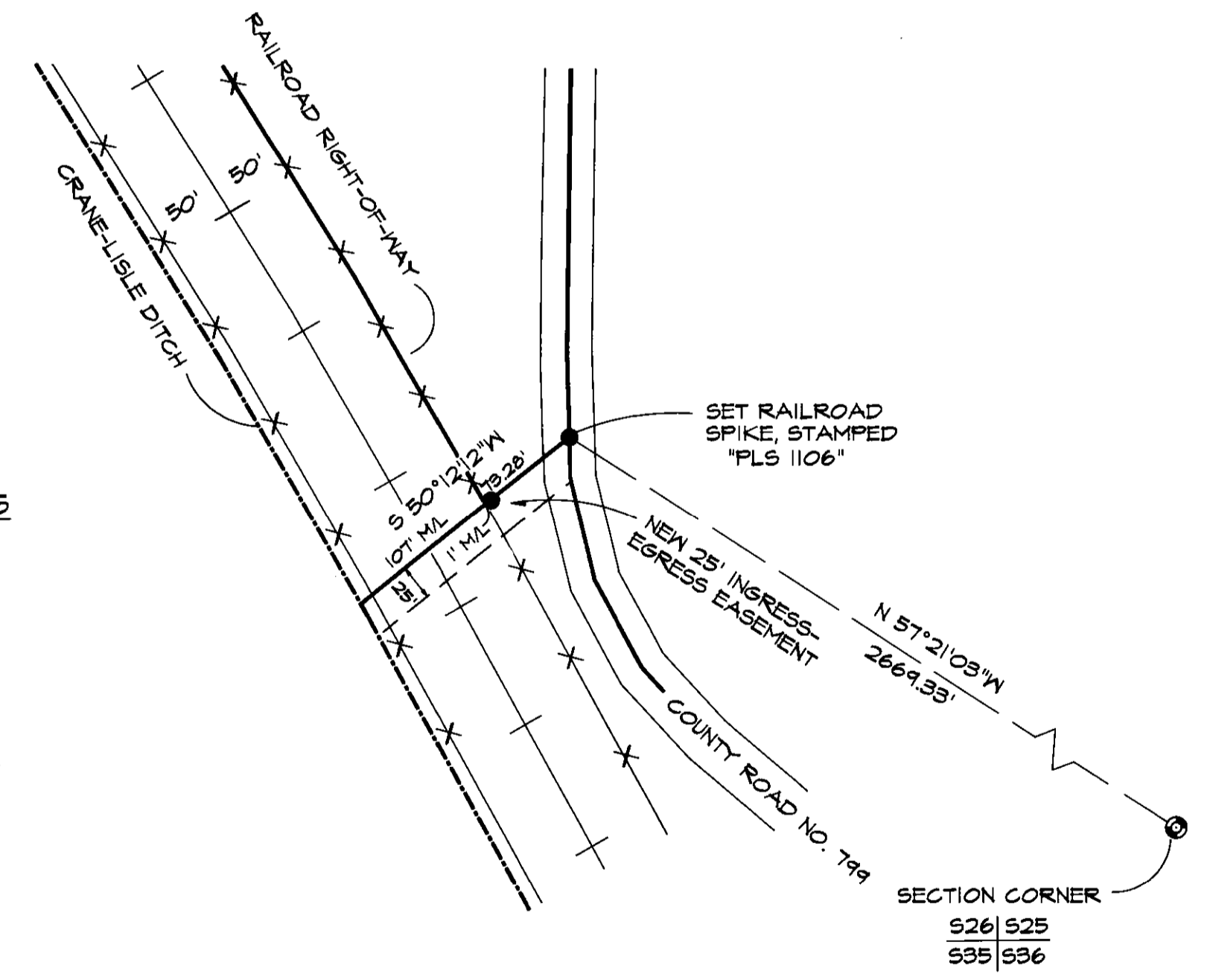
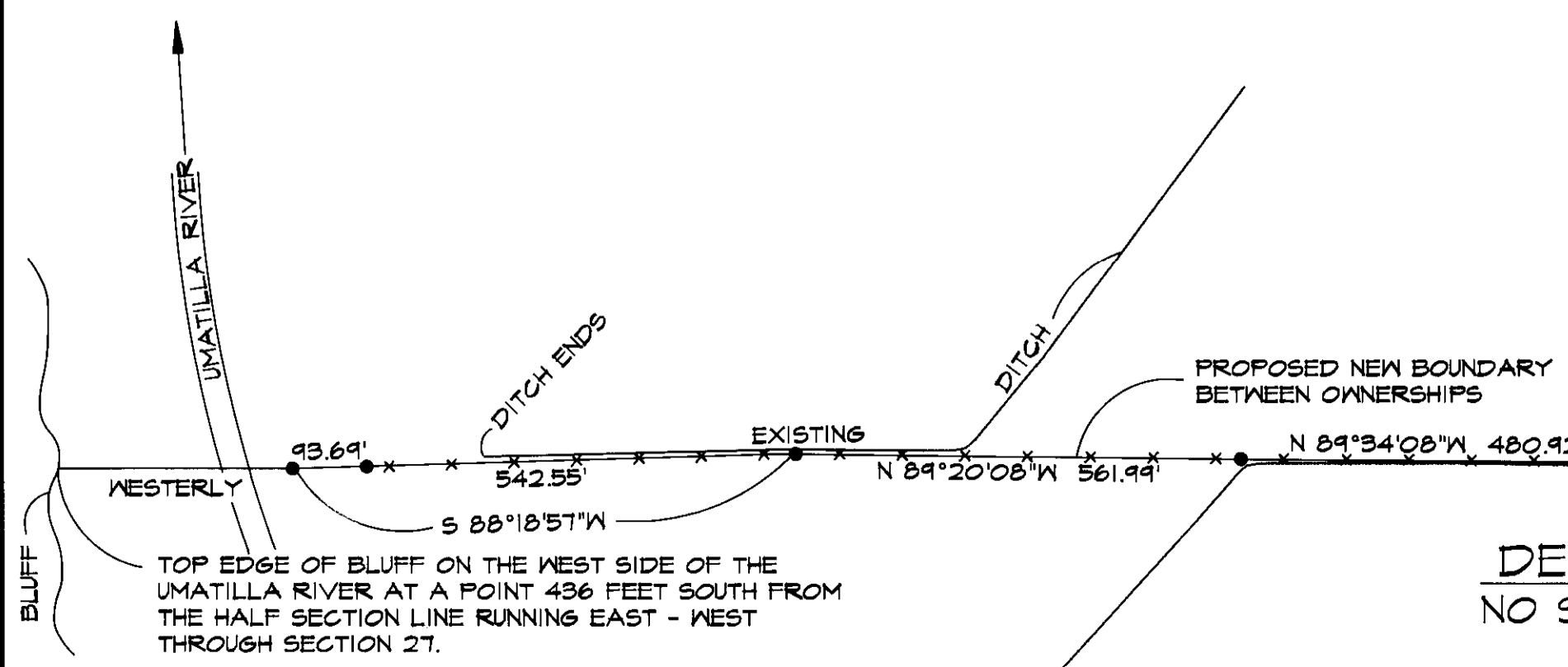
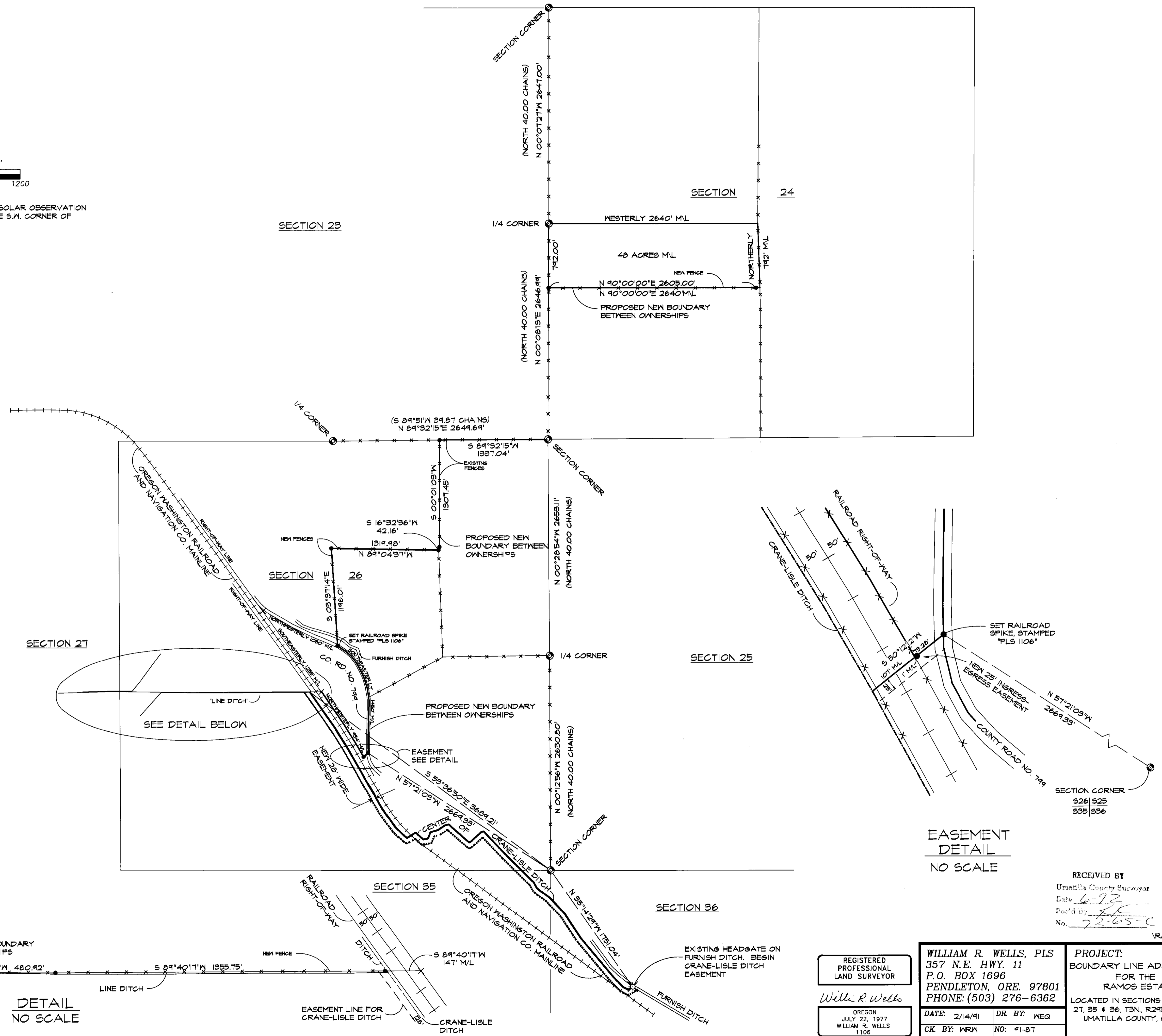
**NARRATIVE OF SURVEY**

THE PURPOSE OF THIS SURVEY WAS TO LOCATE AND MONUMENT CERTAIN NEW OWNERSHIP LINES FOR THE RAMOS ESTATE. DESCRIPTIONS FOR THE NEW OWNERSHIP BLOCKS ARE PREPARED SEPARATELY. BECAUSE OF SPACE CONSIDERATIONS, THIS MAP SHOWS ONLY THOSE BOUNDARIES WHICH VARY FROM ORIGINAL DEED DESCRIPTIONS.

SIX PUBLIC LAND SURVEY CORNERS WERE ALSO MONUMENTED UNDER THE COUNTY PUBLIC LAND CORNER REMONUMENTATION PROGRAM. CORNER CERTIFICATES EXPLAINING REMONUMENTATION FOR THESE CORNERS ARE RECORDED SEPARATELY.

BASIS OF BEARINGS FOR THIS SURVEY WAS A SOLAR OBSERVATION TAKEN 750 FEET EAST OF THE SOUTHWEST CORNER OF SECTION 24.

THIS SURVEY WAS MADE WITH A 2 PERSON CREW USING A LIETZ SET 9B TOTAL STATION AND SDR 22 ELECTRONIC FIELD BOOK. REFERENCE MEASUREMENTS TO THE REMONUMENTED PUBLIC LAND SURVEY CORNERS WERE TAKEN WITH A STEEL TAPE AND BRUNTON POCKET TRANSIT.



**EASEMENT DETAIL**  
NO SCALE

RECEIVED BY  
Umatilla County Surveyor  
Date: 6-9-23  
Rec'd by: [Signature]  
No. 72-65-C

REGISTERED PROFESSIONAL LAND SURVEYOR  <i>William R. Wells</i>	<b>WILLIAM R. WELLS, PLS</b> 357 N.E. HWY. 11 P.O. BOX 1696 PENDLETON, ORE. 97801 PHONE: (503) 276-6362	<b>PROJECT:</b> BOUNDARY LINE ADJUSTMENT FOR THE RAMOS ESTATE LOCATED IN SECTIONS 24, 25, 26, 27, 35 & 36, T3N, R24E, W.M., UMATILLA COUNTY, OREGON
	DATE: 2/14/91 CK. BY: WRW	DR. BY: WEG NO: 91-87

RAMOSI.DWG