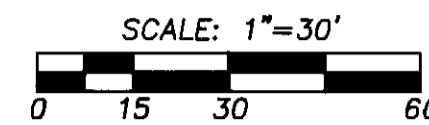


COMMENCEMENT POINT
N.W. CORNER SECTION 5,
T2N., R32E., W.M.,
FOUND 2" BRASS CAP
BY CITY OF PENDLETON.



BASIS OF BEARINGS: BEARING BETWEEN
CITY STATION "A DELTA 3" AND "MORMON
SPIRE" BEING S 71°39'30" E.
NOTE: DISTANCES SHOWN ON THIS PLAT
ARE GROUND DISTANCES.

NOTE:

THIS SURVEY WAS PREPARED UNDER THE DIRECTION OF HEMPHILL CORPORATION. LATITUDE AND LONGITUDE OF THE TOWER SITE IS BASED ON COAST AND GEODETIC SURVEY STATION "PENDAIR", WITH TOWER SITE POSITION CALCULATED ON THE NORTH AMERICAN DATUM OF 1927. VERTICAL DATUM IS BASED ON THE NORTH AMERICAN VERTICAL DATUM OF 1929, AS DETERMINED FROM CITY OF PENDLETON STATION A DELTA 3, WITH A REPORTED ELEVATION OF 1454.08. THE TOWER SITE IS CONTAINED ON THE 7.5 MINUTE SERIES TOPOGRAPHIC MAP OF THE PENDLETON QUADRANGLE MAP, UMATILLA COUNTY, OREGON.

NARRATIVE OF SURVEY

THIS SURVEY WAS PERFORMED AT THE REQUEST OF HEMPHILL CORPORATION TO MONUMENT BOUNDARIES OF A CELLULAR TOWER SITE TO BE CONSTRUCTED FOR UNITED STATES CELLULAR CORPORATION.

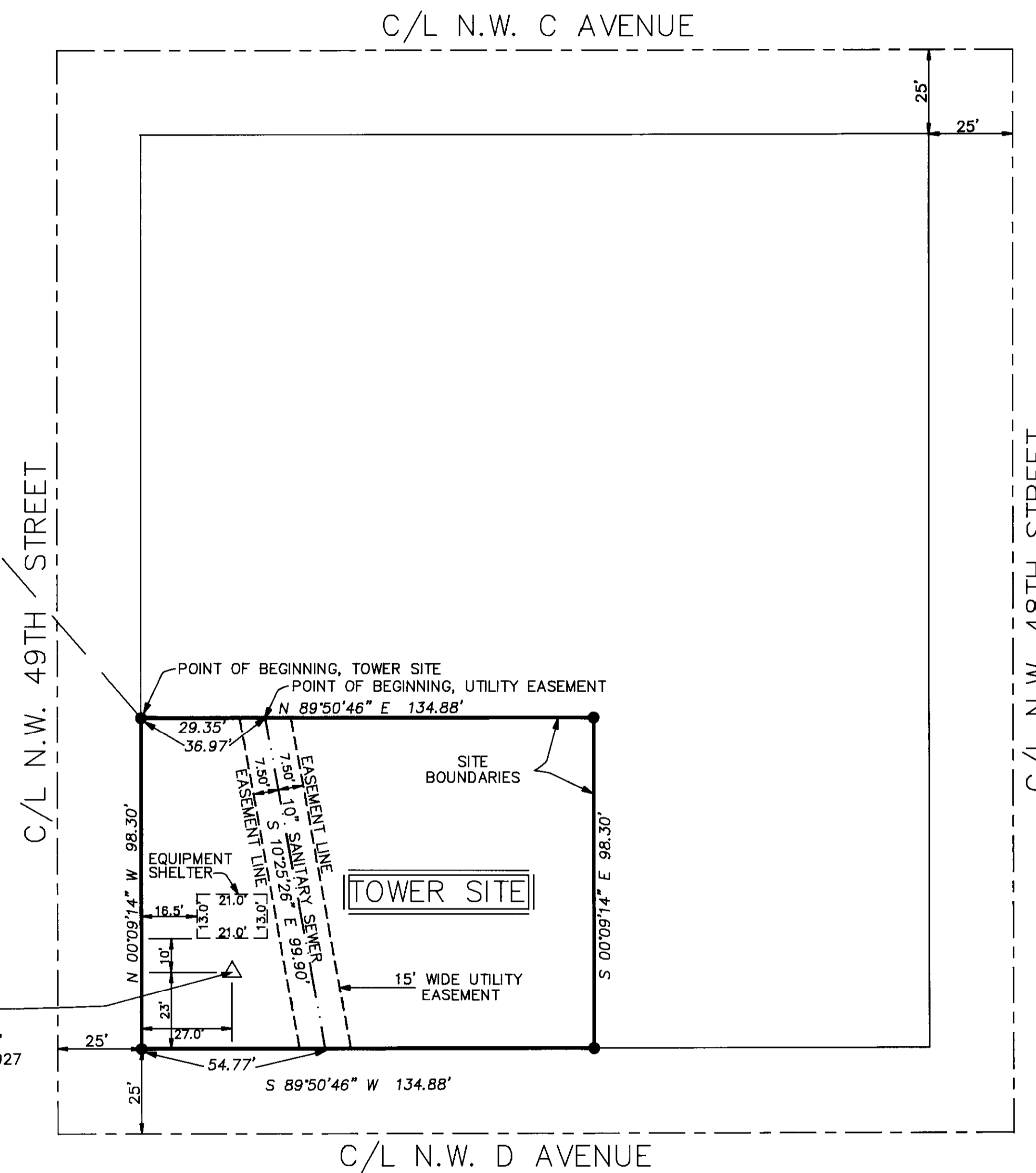
THE TOWER SITE IS LOCATED IN THE UNRECORDED "PENDAIR PLAT", ON LANDS CONTROLLED BY THE CITY OF PENDLETON. THE TOWER SITE AND UTILITY EASEMENT DESCRIPTIONS, ALONG WITH CITY COORDINATES BOUNDING THE TOWER SITE WERE FURNISHED BY THE CITY OF PENDLETON. UNITED STATES CELLULAR CORPORATION INTENDS TO LEASE THE SITE FROM THE CITY OF PENDLETON.

THE STREET LOCATIONS SHOWN ON THIS SURVEY PLAT MAY BE SUBJECT TO CHANGE IN THE FUTURE, DEPENDING ON THE CITY OF PENDLETON'S PLANS FOR FUTURE DEVELOPMENT IN THE AREA.

THIS SURVEY WAS MADE WITH A 2 PERSON CREW USING A LIETZ SET 3 B AUTOMATIC TOTAL STATION WITH STANDARD ERRORS PLUS OR MINUS 3 SECONDS ANGULAR, AND 5MM, PLUS OR MINUS 3 PARTS PER MILLION TIMES DISTANCE FOR LINEAR MEASUREMENT.

SURVEY COORDINATES AND BEARINGS ARE BASED ON THE CITY OF PENDLETON LOCAL GRID SYSTEM. LATITUDE AND LONGITUDE OF PROPOSED TOWER ARE BASED ON COAST AND GEODETIC SURVEY STATION "PENDAIR", NAD 1927. VERTICAL DATUM IS BASED ON THE NORTH AMERICAN VERTICAL DATUM OF 1929, AS DETERMINED FROM CITY OF PENDLETON STATION A DELTA 3, WITH A REPORTED ELEVATION OF 1454.08.

CENTER OF TOWER:
LATITUDE = 45°41'08.89"
LONGITUDE = 118°50'37.49"
OCS, NORTH ZONE, NAD 1927
GROUND ELEV. = 1442.1



LEGEND

- SET 5/8" BY 30" IRON PIN WITH 1 1/2" YELLOW PLASTIC CAP MARKED "W.R. WELLS, PLS 1106".

LEGAL DESCRIPTION OF TOWER SITE

COMMENCING AT THE NORTHWEST CORNER OF SECTION 5, T2N., R32E., W.M.;

THENCE SOUTH 41°14'14" EAST A DISTANCE OF 1519.90 FEET TO A POINT ON THE EASTERLY RIGHT-OF-WAY LINE OF N.W. 49TH STREET, THE TRUE POINT OF BEGINNING FOR THIS DESCRIPTION;

THENCE NORTH 89°50'46" EAST A DISTANCE OF 134.88 FEET; THENCE SOUTH 00°09'14" EAST A DISTANCE OF 98.30 FEET TO A POINT ON THE NORTHERLY RIGHT-OF-WAY LINE OF N.W. D AVENUE; THENCE SOUTH 89°50'46" WEST ALONG SAID NORTHERLY RIGHT-OF-WAY LINE A DISTANCE OF 134.88 FEET TO A POINT ON THE EASTERLY RIGHT-OF-WAY LINE OF N.W. 49TH STREET; THENCE NORTH 00°09'14" WEST ALONG SAID EASTERLY RIGHT-OF-WAY LINE A DISTANCE OF 98.30 FEET, MORE OR LESS, TO THE POINT OF BEGINNING.

TRACT CONTAINS 13,259 SQUARE FEET, OR 0.30438 ACRE, MORE OR LESS.

ALL BEING IN THE COUNTY OF UMATILLA, STATE OF OREGON.

LEGAL DESCRIPTION OF UTILITY EASEMENT

A 15 FOOT UTILITY EASEMENT, THE CENTERLINE OF WHICH IS MORE PARTICULARLY DESCRIBED AS FOLLOWS:

COMMENCING AT THE NORTHWEST CORNER OF SECTION 5, T2N., R32E., W.M.;

THENCE SOUTH 41°14'14" EAST A DISTANCE OF 1519.90 FEET TO A POINT ON THE EASTERLY RIGHT OF WAY LINE OF N.W. 49TH STREET; THENCE NORTH 89°50'46" EAST A DISTANCE OF 36.97 FEET TO THE TRUE POINT OF BEGINNING FOR THIS CENTERLINE DESCRIPTION;

THENCE SOUTH 10°25'26" EAST A DISTANCE OF 99.90 FEET TO A POINT ON THE NORTHERLY RIGHT-OF-WAY LINE OF N.W. D AVENUE, THE TERMINUS POINT FOR THIS DESCRIPTION.

FROM SAID TERMINUS POINT, THE INTERSECTION OF THE NORTHERLY RIGHT-OF-WAY LINE OF N.W. D AVENUE WITH THE EASTERLY RIGHT-OF-WAY LINE OF N.W. 49TH STREET BEARS SOUTH 89°50'46" WEST A DISTANCE OF 54.77 FEET.

SURVEYOR'S CERTIFICATION

I, WILLIAM R. WELLS, A REGISTERED PROFESSIONAL LAND SURVEYOR IN THE STATE OF OREGON, DO HEREBY CERTIFY THAT THIS SURVEY WAS MADE UNDER MY DIRECT SUPERVISION DURING THE MONTH OF NOVEMBER, 1993, AND THAT IT COMPLIES WITH STATUTES OF THE STATE OF OREGON.

William R. Wells
WILLIAM R. WELLS, PLS
OREGON LICENSE NO. 1106

REGISTERED
PROFESSIONAL
LAND SURVEYOR

William R. Wells
WILLIAM R. WELLS
1106

OREGON
JULY 22, 1977
WILLIAM R. WELLS
1106
EXPIRES 12/31/94

RECEIVED BY
Umatilla County Surveyor
Date: 11/23/93
No. 94-09-C

WILLIAM R. WELLS, PLS
357 N.E. HWY. 11
P.O. BOX 1696
PENDLETON, OR 97801
PHONE: (503) 276-6362

DATE: 11/23/93 DR. BY: WRW
CK. BY: WRW NO: 93-192

PROJECT:
LEASE BOUNDARY SURVEY FOR
TOWER LOCATION, IN THE NW 1/4
OF SECTION 5, T2N., R32E., W.M.,
UMATILLA COUNTY, OREGON.

PERFORMED AT THE REQUEST OF
HEMPHILL CORPORATION
FOR
UNITED STATES CELLULAR CORP.

US1BB