

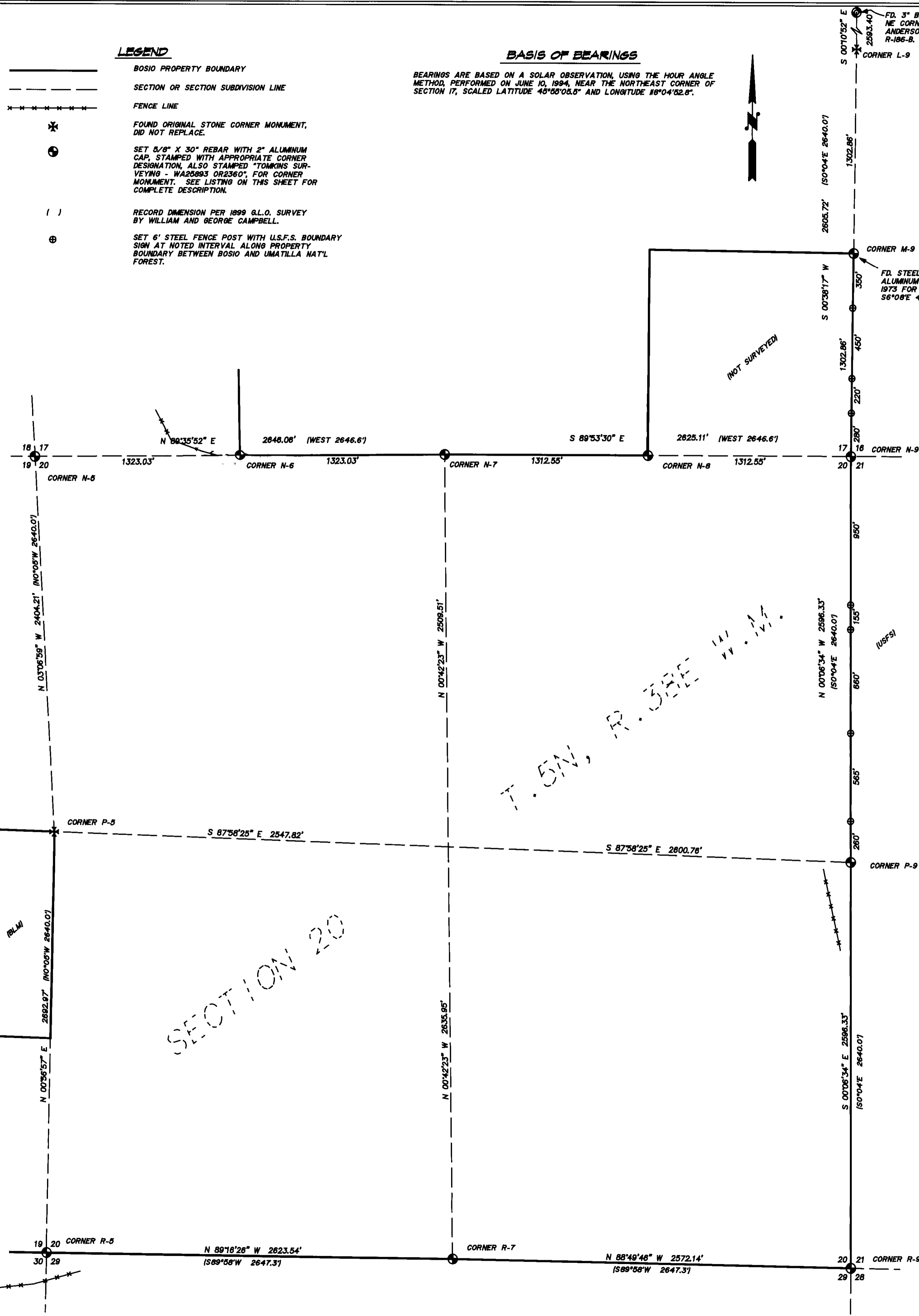
LAND CORNER RECORDS

LEGEND

- BOSIO PROPERTY BOUNDARY
- - - - - SECTION OR SECTION SUBDIVISION LINE
- FENCE LINE
- * FOUND ORIGINAL STONE CORNER MONUMENT, DID NOT REPLACE.
- ⊙ SET 5/8" X 30" REBAR WITH 2" ALUMINUM CAP, STAMPED WITH APPROPRIATE CORNER DESIGNATION, ALSO STAMPED "TOMKINS SURVEYING - WA25893 0R2360", FOR CORNER MONUMENT. SEE LISTING ON THIS SHEET FOR COMPLETE DESCRIPTION.
- () RECORD DIMENSION PER 1899 G.L.O. SURVEY BY WILLIAM AND GEORGE CAMPBELL.
- ⊕ SET 6" STEEL FENCE POST WITH U.S.F.S. BOUNDARY SIGN AT NOTED INTERVAL ALONG PROPERTY BOUNDARY BETWEEN BOSIO AND UMATILLA NAT'L FOREST.

BASIS OF BEARINGS

BEARINGS ARE BASED ON A SOLAR OBSERVATION USING THE HOUR ANGLE METHOD, PERFORMED ON JUNE 10, 1894, NEAR THE NORTHEAST CORNER OF SECTION 17, SCALED LATITUDE 45°00'00.8" AND LONGITUDE 126°04'52.8".



CORNER CODE: L-9
E. 1/4 CORNER OF SEC. 17
HISTORY: CORNER WAS ORIGINALLY SET, IN 1899, BY W.E. AND G.R. CAMPBELL, AS A BASALT STONE 15X10X6", 10" IN THE GROUND, WITH THE FOLLOWING BEARING TREES FOR ACCESSORIES; A FR. 12" DIAM. BEARS S 13 1/2° E, 48.0' DST., MARKED 1/4 S. 16, B.T., AND A FR. 20" DIAM. BEARS S 6° W, 33' DST., MARKED 1/4 S. 17, B.T.
EVIDENCE FOUND: A 6" DIAM. BASALT STONE WITH A CHISELED "4" ON W. SIDE, WITH THE FOLLOWING BEARING TREES FOR ACCESSORIES; A FR. 36" DIAM. BEARS S 6° W, 30' DST., WITH AN OPEN BLAZE AND BLM TAG, AND A FR. LOG, WITH AN OPEN BLAZE, BEARING S 13° E, 49' DST.
CORNER PERPETUATION: SET A STEEL POST ALONGSIDE OF STONE.

CORNER CODE: M-9
S. 1/16 CORNER OF SEC. 17 AND 18
HISTORY: NONE
EVIDENCE FOUND: STEEL FENCE POST IN ROCK MOUND WITH TAG "BLM-1/16 CORNER, LOCATED BY STAFF COMPASS" - 1973.
CORNER PERPETUATION: SET 5/8" X 30" REBAR WITH 2" ALUMINUM CAP NOTED WITH BLM DESIGNATION, WITH THE FOLLOWING BEARING TREES FOR ACCESSORIES; A FR. 12" DIAM. BEARS N 80° W, 12.9' DST., SCRIBED 1/16 B.T." SET STEEL POST E. OF ALUMINUM CAP WITH MONUMENT SIGN. THE BLM POST WITH TAG BEARS S 6°08' E, 46.9' DST. FROM THE ALUMINUM CAP.

CORNER CODE: N-5
N.W. CORNER OF SEC. 20, CORNER COMMON TO SEC. 17, 18, 19 AND 20
HISTORY: CORNER WAS ORIGINALLY SET, IN 1899, BY W.E. AND G.R. CAMPBELL, AS A BASALT STONE 30X10X10", 15" IN THE GROUND, WITH THE FOLLOWING BEARING TREES FOR ACCESSORIES; A FR. 30" DIAM. BEARS N 88° E, 163.7' DST., MARKED T.O.N.R.30E, S. 17, B.T., A FR. 24" DIAM. BEARS S 60° E, 174.9' DST., MARKED T.O.N.R.30E, S. 20, B.T., AND A FR. 10" DIAM. BEARS N 68° W, 143.2' DST., MARKED T.O.N.R.30E, S. 18, B.T.
EVIDENCE FOUND: AN ORIGINAL BEARING TREE FOUND, A FR. 20" DIAM. BEARS N 61°43' W, 143.2' DST., WITH FORKED TOP ON RIDGE, A PARTIALLY HEALED BLAZE AND B.T. SIGN "700-1980". A FR. STUMP FROM AN ORIGINAL BEARING TREE, 32" DIAM. BEARS N 80°24' E, 163.7' DST., WITH NO BLAZE VISIBLE.
CORNER PERPETUATION: SET 5/8" X 30" REBAR WITH 2" ALUMINUM CAP, DRIVEN 6" INTO THE GROUND, WITH A RAISED STONE MOUND 30" X 20" 1899. TWO MORE BEARING TREES FOR ACCESSORIES; A FR. 28" DIAM. BEARS S 78°27' E, 108.0' DST., SCRIBED T.O.N.R.30E, S. 20, B.T., SET B.T. TAG, AND A WHITE FR. 20" DIAM. BEARS S 20°08' E, 133.9' DST., SCRIBED T.O.N.R.30E, S. 20, B.T., SET B.T. TAG.

CORNER CODE: N-6
W. 1/16 CORNER OF SEC. 17 AND 20
HISTORY: NONE
EVIDENCE FOUND: NONE
CORNER PERPETUATION: SET 5/8" X 30" REBAR WITH 2" ALUMINUM CAP, IN CENTER OF MOUND, WITH THE FOLLOWING BEARING TREES FOR ACCESSORIES; A FR. 8" DIAM. BEARS S 46°06' W, 46.1' DST., SCRIBED 1/16 B.T., AND A WHITE FR. 15" DIAM. BEARS N 32° E, 10.0' DST., SCRIBED 1/16 B.T." SET A STEEL POST WITH MONUMENT SIGN N.W. OF ALUMINUM CAP. THE ALUMINUM CAP IS LOCATED NORTH 6.5' FROM AN EAST-WEST FENCE.

CORNER CODE: N-7
N. 1/4 CORNER OF SEC. 20, AND S. 1/4 CORNER OF SEC. 17
HISTORY: CORNER WAS ORIGINALLY SET, IN 1899, BY W.E. AND G.R. CAMPBELL, AS A WHITE FR. POST, 3 1/2" LONG, 4" SQ., AND 24" IN THE GROUND, MARKED 1/4 S. ON N. FACE, FROM WHICH THE FOLLOWING BEARING TREES WERE USED FOR ACCESSORIES; A FR. 22" DIAM. BEARS N 31°30' E, 29.4' DST., MARKED 1/4 S. 17, B.T., AND SPRUCE, 22" DIAM. BEARS S 7 1/4° E, 16.8' DST., MARKED 1/4 S. 20, B.T.
EVIDENCE FOUND: A 4" SHARP POST LYING ON GROUND NEAR CORNER POSITION. AN ORIGINAL BEARING TREE FOUND, A WHITE FR. 38" DIAM. BEARS N 31°30' E, 29.4' DST., WITH OPEN BLAZE, SCRIBE VISIBLE, ALUMINUM TAG B.T., BERT UDELL, 1906, B.T. TAG 1980 "700".
CORNER PERPETUATION: SET 5/8" X 30" REBAR WITH 2" ALUMINUM CAP, SURROUNDED BY A LOW MOUND OF STONES, WITH THE FOLLOWING BEARING TREE FOR ACCESSORY; A WHITE FR. 15" DIAM. BEARS N 65° W, 34.0' DST., SCRIBED 1/4 B.T.

CORNER CODE: N-8
E. 1/16 CORNER OF SEC. 17 AND 20
HISTORY: NONE
EVIDENCE FOUND: NONE
CORNER PERPETUATION: SET 5/8" X 30" REBAR WITH 2" ALUMINUM CAP, IN CENTER OF STONE MOUND, WITH THE FOLLOWING BEARING TREES FOR ACCESSORIES; A FR. 22" DIAM. BEARS S 77°45' W, 20.3' DST., SCRIBED 1/16 B.T., AND A FR. 32" DIAM. BEARS N 50°52' E, 21' DST., SCRIBED 1/16 B.T." SET A STEEL POST WITH MONUMENT SIGN, N.W. OF ALUMINUM CAP.

CORNER CODE: N-9
N.E. CORNER OF SEC. 20, CORNER COMMON TO SEC. 16, 17, 20 AND 21
HISTORY: CORNER WAS ORIGINALLY SET, IN 1899, BY W.E. AND G.R. CAMPBELL, AS AN IRON STONE 30X24X20", 15" IN THE GROUND, WITH THE FOLLOWING BEARING TREES FOR ACCESSORIES; A PINE, 40" DIAM. BEARS N 78° E, 50.8' DST., MARKED T.O.N.R.30E, S. 16, B.T., A PINE, 30" DIAM. BEARS S 72° W, 18.6' DST., MARKED T.O.N.R.30E, S. 20, B.T., A PINE, 30" DIAM. BEARS S 63° E, 48.8' DST., MARKED T.O.N.R.30E, S. 20, B.T., AND A PINE, 30" DIAM. BEARS N 24° W, 98.7' DST., MARKED T.O.N.R.30E, S. 17, B.T.
EVIDENCE FOUND: ORIGINAL BEARING TREES FOUND; A PINE, 34" DIAM. BEARS S 71°42' E, 48.2' DST., BLAZE PART OPEN AND VISIBLE, AND A PINE, 44" DIAM. BEARS N 25°28' W, 98.7' DST., BLAZE PART OPEN AND VISIBLE. A 2" X 2" HEWN STAKE WITH ANCIENT SIGN ATTACHED WAS FOUND LYING AT THE CORNER. A 12" * FR. TAGGED BY BLM AS THE CORNER IN 1973, IS LOCATED N 27°3' W, 10.0' FROM THE CORNER.
CORNER PERPETUATION: SET 5/8" X 30" REBAR WITH 2" ALUMINUM CAP IN OLD ROCK MOUND, PLACED POST WITH MONUMENT SIGN 1.00' N.W. OF CORNER.

CORNER CODE: P-5
W. 1/4 CORNER OF SEC. 20
HISTORY: CORNER WAS ORIGINALLY SET, IN 1899, BY W.E. AND G.R. CAMPBELL, AS A BASALT STONE 20X12X9", 15" IN THE GROUND, WITH A RAISED MOUND OF STONE, 2' X 15" HIGH, W. OF CORNER.
EVIDENCE FOUND: A 20X12X8" STONE, OUT OF GROUND, WITH A SCATTERED MOUND OF SMALL STONES TO THE WEST.
CORNER PERPETUATION: RESET 20X12X8" STONE VERTICALLY AND REMOUNDED STONES AROUND IT. STONE IS NOTCHED ON TOP. TWO BEARING TREES FOR ACCESSORIES; A RED FR. 2" DIAM. BEARS N 3°50' W, 66.7' DST., AND A WHITE FR. 24" DIAM. BEARS N 24°19' E, 61.7' DST.

CORNER CODE: P-9
E. 1/4 CORNER OF SEC. 20, AND W. 1/4 CORNER OF SEC. 21
HISTORY: CORNER WAS ORIGINALLY SET, IN 1899, BY W.E. AND G.R. CAMPBELL, AS A BASALT STONE 20X12X9", 15" IN THE GROUND, WITH THE FOLLOWING BEARING TREES FOR ACCESSORIES; A FR. 10" DIAM. BEARS N 69° E, 92.4' DST., MARKED 1/4 S. 21, B.T., AND A FR. 24" DIAM. BEARS N 55° W, 99.4' DST., MARKED 1/4 S. 20, B.T.
EVIDENCE FOUND: A 20X12X9" STONE, WITH APPARENT "X" ON TOP, 1.5' S.W. OF CORNER, AND LYING ON SIDE, DISPLACED.
CORNER PERPETUATION: SET 5/8" X 30" REBAR WITH 2" ALUMINUM CAP, 12" DEEP IN LARGE STONE MOUND. SET A STEEL POST WITH MONUMENT SIGN S.E. OF ALUMINUM CAP, SCRIBED THE FOLLOWING BEARING TREES FOR ACCESSORIES; A PINE, 19" DIAM. BEARS S 83° W, 39.2' DST., AND A PINE, 20" DIAM. BEARS S 0°30' E, 47.86' DST.

CORNER CODE: R-5
S.W. CORNER OF SEC. 20, CORNER COMMON TO SEC. 19, 20, 28, AND 30
HISTORY: CORNER WAS ORIGINALLY SET, IN 1899, BY W.E. AND G.R. CAMPBELL, AS A BASALT STONE 18X10X6", 13" IN THE GROUND, WITH A RAISED MOUND OF STONES, 2' X 15" HIGH, W. OF CORNER.
EVIDENCE FOUND: A 3" DIAM. SCATTERED MOUND OF STONES ON W. SIDE OF 6X10X8" STONE, LYING ON TOP OF GROUND ON S.E. FACING SLOPE. NO TREES WITHIN 250'.
CORNER PERPETUATION: REMOUNDED STONES AROUND CORNER STONE. SET 5/8" X 30" REBAR WITH 2" ALUMINUM CAP, IN CENTER OF MOUND, WITH THE FOLLOWING BEARING TREE FOR ACCESSORY; A PINE, 20" DIAM. BEARS S 87°16' W, 26.6' DST., FROM THE S.W. CORNER OF SEC. 20, BLAZED N.E. FACE AND SCRIBED T.O.N.R.30E, S. 30, B.T.

CORNER CODE: R-7
S. 1/4 CORNER OF SEC. 20, AND N. 1/4 CORNER OF SEC. 29
HISTORY: CORNER WAS ORIGINALLY SET, IN 1899, BY W.E. AND G.R. CAMPBELL, AS AN IRON STONE 18X8X6", 10" IN THE GROUND, WITH THE FOLLOWING BEARING TREES FOR ACCESSORIES; A FR. 12" DIAM. BEARS S 88° E, 99.4' DST., MARKED 1/4 S. 29, B.T., AND A FR. 20" DIAM. BEARS N 64° W, 107.6' DST., MARKED 1/4 S. 20, B.T.
EVIDENCE FOUND: A CHARRED STAKE IN MOUND OF STONE. AN ORIGINAL BEARING TREE, A DOUGLAS FR. 42" DIAM. BEARS S 50°33' E, 50' DST., BLAZE PART OPEN, SCRIBE VISIBLE, AXE WORK ON EAST SIDE OF TREE.
CORNER PERPETUATION: SET 5/8" X 30" REBAR WITH 2" ALUMINUM CAP, IN CENTER OF MOUND, WITH THE FOLLOWING BEARING TREE FOR ACCESSORY; A WHITE FR. 24" DIAM. BEARS N 77° W, 61.3' DST., SCRIBED 1/4 B.T.

CORNER CODE: R-9
S.E. CORNER OF SEC. 20, CORNER COMMON TO SEC. 20, 21, 26, AND 29
HISTORY: CORNER WAS ORIGINALLY SET, IN 1899, BY W.E. AND G.R. CAMPBELL, AS A BASALT STONE 18X10X10", 10" IN THE GROUND, WITH THE FOLLOWING BEARING TREES FOR ACCESSORIES; A FR. 15" DIAM. BEARS N 1° E, 143.2' DST., MARKED T.O.N.R.30E, S. 21, B.T., AND A FR. 15" DIAM. BEARS N 3° W, 128.0' DST., MARKED T.O.N.R.30E, S. 20, B.T.
EVIDENCE FOUND: CORNER FALLS ON STEEP NORTH FACING SLOPE, FOUND NO SIGN OF STONE OR MOUND. AN ORIGINAL BEARING TREE FOUND, A RED FR. 23" DIAM. BEARS N 1° E, 143.2' DST.
CORNER PERPETUATION: SET 5/8" X 30" REBAR WITH ALUMINUM CAP, IN CENTER OF MOUND, WITH THE FOLLOWING BEARING TREES FOR ACCESSORIES; A TAMARACK, 15" DIAM. BEARS N 70° W, 129.8' DST., AND A PONDROSA PINE, 20" DIAM. BEARS S 30° E, 18.5' DST.

NARRATIVE

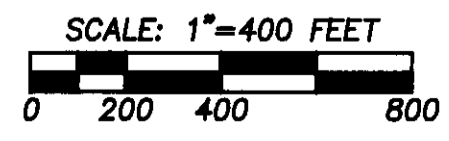
THIS SURVEY WAS PERFORMED AT THE REQUEST OF MR. STEPHEN BOSIO TO LOCATE THE CORNERS WITHIN SECTION 20, T. 5N, R. 3E, W.M. AND TO POST A PORTION OF THE BOUNDARY BETWEEN HIS LANDS AND THOSE OF THE UMATILLA NATIONAL FOREST.

THIS SURVEY COMMENCED AT THE NORTHEAST CORNER OF SECTION 17, IN THE AREA OF BIG MEADOWS, AND RAN SOUTH TWO MILES, CROSSING THE NORTH FORK OF THE WALLA WALLA RIVER, THENCE WEST ONE MILE, THENCE NORTH ONE MILE BACK INTO THE AREA OF BIG MEADOWS. WE PROCEEDED EASTERLY ONE HALF MILE, THENCE NORTHEASTERLY 1/4 MILES TO OUR BEGINNING POINT. AS SHOWN HEREIN, ALL OF THE CORNERS SET IN 1899 WERE RECOVERED, UNLESS THE DISPLACED STONE AT THE EAST 1/4 CORNER OF SECTION 20 WAS NOT HELD FOR BOUNDARY CONTROL.

THIS SURVEY WAS PERFORMED USING A SOKKIA AUTOMATIC TOTAL STATION HAVING STANDARD ERRORS OF 5 MILLIMETERS ± 2 PARTS PER MILLION AND 0°00'02". THE TRAVERSE CLOSURE EXCEEDED 1 PART IN 10,000 AND WAS ADJUSTED USING LEAST SQUARES.

REGISTERED PROFESSIONAL LAND SURVEYOR

PAUL W.P. TOMKINS
2380
RENEW'S 12/31/84
7/02/94



RECEIVED BY
Umatilla County Surveyor
Date: 9-94
By: RK
No. 94-122-C