

BASIS OF BEARINGS

BEARINGS SHOWN ARE BASED ON THE OREGON STATE COORDINATE SYSTEM, NORTH ZONE, MAD 83-9L, FROM A GPS CONTROL TRAVERSE USING ASHTECH DUAL FREQUENCY RECEIVERS. NGS STATIONS "WALAH II" AND "ATHENA" WERE HELD AS CONTROLLING FOR SAID TRAVERSE.



LAND CORNER RECORDS

CORNER CODE E-17
 N.W. CORNER OF SECTION II, CORNER COMMON TO SEC.'S 2, 3, 10 AND 11
 HISTORY: CORNER WAS ORIGINALLY ESTABLISHED, IN 1872, BY G. WILLIAMS, AS A STONE 18" X 20" X 24"
 EVIDENCE FOUND: ON WEST FACING SLOPE 20' - 30' NORTH OF E-W ANCIENT FENCE LINE, A 18" X 20" X 26" BASALT STONE, 4 NOTCHES ON SOUTH SIDE.
 CORNER PERPETUATION: SET 5/8" X 30" REBAR WITH 2" ALUMINUM CAP ALONGSIDE STONE FOR CORNER. SET STEEL FENCE POST AND SIGN ON E. SIDE OF CORNER.

CORNER CODE E-21
 N.E. CORNER OF SECTION II, CORNER COMMON TO SEC.'S 1, 2, 11 AND 12
 HISTORY: SEE L.C.R. FILED BY PAUL W.P. TOMKINS IN 1992, IN CONJUNCTION WITH SURVEY 92-106-G, FOR LOUISIANA PACIFIC.
 EVIDENCE FOUND: 1" DIA. "HOFFLAND" GALVANIZED IRON PIPE WITH 2-1/2" DIA. BRONZE CAP AND BEARING TREES AS DESCRIBED CORNER, IN A CORNER RECORD FILED BY TOMKINS IN 1992 IN CONJUNCTION WITH SURVEY 92-106-G, FOR LOUISIANA PACIFIC.
 CORNER PERPETUATION: NONE

CORNER CODE J-17
 S.W. CORNER OF SECTION II, CORNER COMMON TO SEC.'S 10, 11, 14 AND 15
 HISTORY: SEE L.C.R. FILED BY PAUL W.P. TOMKINS IN 1992, IN CONJUNCTION WITH SURVEY 92-106-G, FOR LOUISIANA PACIFIC.
 EVIDENCE FOUND: 1" DIA. "HOFFLAND" GALVANIZED IRON PIPE WITH 2-1/2" DIA. BRONZE CAP AND BEARING TREES AS DESCRIBED CORNER, IN A CORNER RECORD FILED BY TOMKINS IN 1992 IN CONJUNCTION WITH SURVEY 92-106-G, FOR LOUISIANA PACIFIC.
 CORNER PERPETUATION: NONE

CORNER CODE J-21
 S.E. CORNER OF SECTION II, CORNER COMMON TO SEC.'S 11, 12, 13 AND 14
 HISTORY: SEE L.C.R. FILED BY PAUL W.P. TOMKINS IN 1992, IN CONJUNCTION WITH SURVEY 92-106-G, FOR LOUISIANA PACIFIC.
 EVIDENCE FOUND: 1" DIA. "HOFFLAND" GALVANIZED IRON PIPE WITH 2-1/2" DIA. BRONZE CAP AND BEARING TREES AS DESCRIBED CORNER, IN A CORNER RECORD FILED BY TOMKINS IN 1992 IN CONJUNCTION WITH SURVEY 92-106-G, FOR LOUISIANA PACIFIC.
 CORNER PERPETUATION: NONE

CORNER CODE H-21
 SOUTH 1/16 CORNER OF SEC.'S II AND 12
 HISTORY: SEE L.C.R. NO. 94-197-R, FILED IN 1994, BY PAUL W.P. TOMKINS.
 EVIDENCE FOUND: 2" ALUMINUM CAP ON A 5/8" REBAR AND BEARING TREES AS DESCRIBED IN A L.C.R. FILED BY TOMKINS IN 1994, RECORDING NO. 94-197-R. THE CORNER WAS FOUND S 8°59'48" E .20' FROM ITS TRUE POSITION.
 CORNER PERPETUATION: NONE

CORNER CODE G-21
 E 1/4 CORNER OF SECTION II AND W 1/4 CORNER OF SECTION 12
 HISTORY: SEE L.C.R. FILED BY PAUL W.P. TOMKINS IN 1992, IN CONJUNCTION WITH SURVEY 92-106-G, FOR LOUISIANA PACIFIC.
 EVIDENCE FOUND: 1" DIA. "HOFFLAND" GALVANIZED IRON PIPE WITH 2-1/2" DIA. BRONZE CAP AND BEARING TREES AS DESCRIBED CORNER, IN A CORNER RECORD FILED BY TOMKINS IN 1992 IN CONJUNCTION WITH SURVEY 92-106-G, FOR LOUISIANA PACIFIC.
 CORNER PERPETUATION: NONE

CORNER CODE E-13
 N.W. CORNER OF SECTION 10, CORNER COMMON TO SEC.'S 3, 4, 9 AND 10
 HISTORY: SEE L.C.R. FILED BY PAUL W.P. TOMKINS IN 1992, IN CONJUNCTION WITH SURVEY 92-106-G, FOR LOUISIANA PACIFIC.
 EVIDENCE FOUND: CORNER NOT VISITED THIS SURVEY-1 DIA. "HOFFLAND" GALVANIZED IRON PIPE WITH 2-1/2" DIA. BRONZE CAP AND BEARING OBJECTS AS DESCRIBED IN A CORNER RECORD FILED BY TOMKINS IN 1992 IN CONJUNCTION WITH SURVEY 92-106-G, FOR LOUISIANA PACIFIC.
 CORNER PERPETUATION: NONE

CORNER CODE G-20
 CENTEER EAST 1/16 CORNER OF SECTION II
 HISTORY: NONE
 EVIDENCE FOUND: NONE

CORNER CODE J-20
 EAST 1/16 CORNER OF SEC.'S II AND 14
 HISTORY: NONE
 EVIDENCE FOUND: NONE

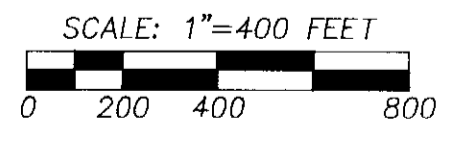
CORNER PERPETUATION: SET 2" ALUMINUM CAP ON 5/8" REBAR STAMPED PER BLM MANUAL. SET STEEL FENCE POST 1' WESTERLY. CORNER FALLS ON WESTERLY FACING HILL SIDE IN ROCK MOUND. THE FOLLOWING BEARING TREES FOR ACCESSORIES: A 19" FIR TREE, BEARS N 63° E, 24.5' DIST AND A 13" FIR TREE, BEARS S 30° E, 11.70' DIST.

CORNER PERPETUATION: SET 2" ALUMINUM CAP ON 5/8" REBAR STAMPED PER BLM MANUAL, IN 18" EARTH MOUND. SET STEEL FENCE POST 1' WESTERLY. THE FOLLOWING BEARING TREES FOR ACCESSORIES: A 13" TAMARACK, BEARS N 25° W, 11.3' DIST AND A 24" SPRUCE, BEARS S 10° E, 20.5' DIST.

NARRATIVE

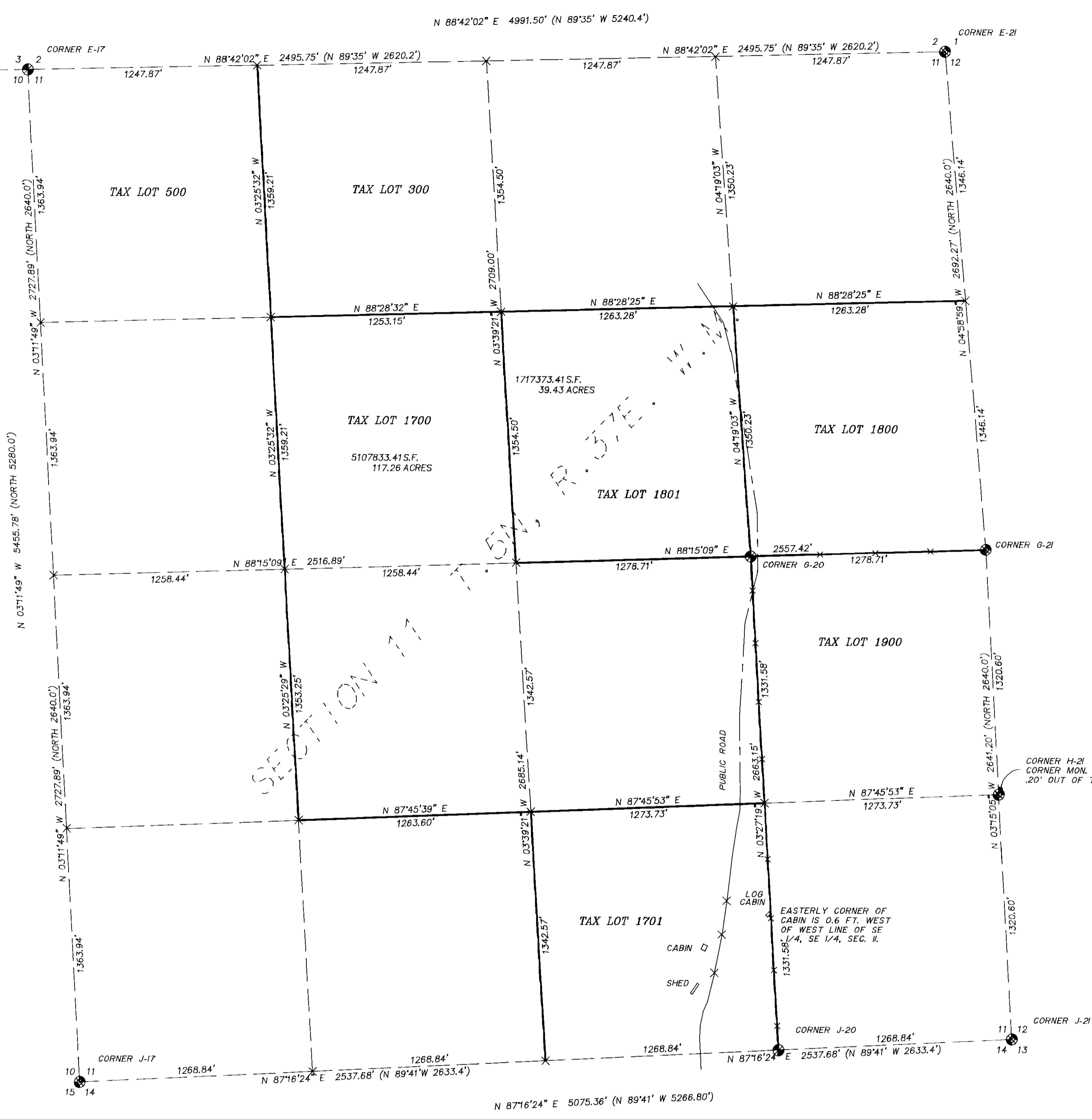
THIS SURVEY WAS PERFORMED AT THE REQUEST OF STEVE MARTIN TO DELINEATE BOUNDARIES IN THE SOUTHEAST QUARTER OF SECTION II, AND TO ASCERTAIN THE RELATIONSHIP OF SEVERAL CABINS TO PROPERTY LINES.

THIS SURVEY WAS PERFORMED AS A CLOSED FIELD TRAVERSE USING A NIKON AUTOMATIC TOTAL STATION WITH STANDARD ERRORS OF 3 MILLIMETERS ± 2 PARTS PER MILLION AND 0°00'03". THE TRAVERSE WAS ADJUSTED USING LEAST SQUARES.



LEGEND

- TAX LOT LINES
- - - SECTION OR SECTION SUBDIVISION LINE
- - - APPROXIMATE LOCATION OF ROADWAY CENTERLINE
- ✕✕✕✕✕✕ SET STEEL FENCE POSTS ON 300' INTERVAL ALONG 1/16 LINE
- SET 5/8" X 30" REBAR WITH APPROPRIATE CORNER DESIGNATION, ALSO STAMPED "TOMKINS SURVEYING - WA25893 OR 2380"
- CORNER SET PRIOR TO THIS SURVEY SEE LAND CORNER RECORDS FOR COMPLETE DESCRIPTION
- ✕ CALCULATED POINT, NOT FOUND OR SET
- () RECORD G.L.C. DIMENSION, BY G. WILLIAMS, 1872.



REGISTERED PROFESSIONAL LAND SURVEYOR

PAUL W.P. TOMKINS
 OREGON
 JULY 26, 1988
 PAUL W.P. TOMKINS
 2360
 Renewed 4/9/96
 5/02/95

A SURVEY OF SECTION 11, TOWNSHIP 5 NORTH, RANGE 37 EAST OF THE WILLAMETTE MERIDIAN, LOCATED IN UMATILLA COUNTY, OREGON	SCALE	PAUL W.P. TOMKINS, LAND SURVEYOR 6 1/2 N. SECOND SUITE 303 WALLA WALLA, WA. 99362 FOR: STEVE MARTIN 1830 GLASGOW BEND, OREGON	MARTIN11.DWG
	HOR. 1" = 400' VERT.		SHEET 1 OF 1
	DATE APRIL 1995		