

FOUND A 2 1/2" STAINLESS STEEL POST WITH BRASS CAP AT THE N.W. CORNER OF SECTION 31 WITH THE FOLLOWING BEARING FROM THE CORNER: A 10" FIR BEARS 48.8°, A 1" FIR BEARS 58.8°E 56.4', A 9" FIR BEARS 58.4°30'W 36.0', AND A 7" FIR BEARS 121°15'W 37.9'. THIS CORNER WAS ACCEPTED AS SET PER THE BLM RESURVEY.

SET 5/8" REBAR WITH PLASTIC YELLOW CAP 40' NORTH OF RIDGETOP AT COMPUTED N.E. CORNER GOVERNMENT LOT 1. REBAR IS IN SMALL STONE MOUND AND A STEEL POST WITH LAND SURVEY MONUMENT SIGN HAS BEEN DRIVEN ALONGSIDE.

FD. 2 1/2" STAINLESS STEEL POST WITH BRASS CAP MARKED FOR THE 1/4 CORNER BETWEEN SECTIONS 30 AND 31 SET BY THE BLM. FROM THE CORNER A 18" FIR BEARS N6°E 13.2' AND A 18" FIR BEARS S55°E 19.47'. SLIGHT ANGULAR AND DISTANCE VARIANCES BETWEEN THIS SURVEY AND THAT SURVEY FILED AT NO. 97-183-C RESULT FROM AN ACTUAL TIE TO THE NORTH 1/4 CORNER ON THIS SURVEY AND THE USE OF A COMPUTED POSITION FOR THE 1/4 CORNER FROM THE BLM NOTES ON SURVEY 97-183-C.

FD. 2 1/2" STAINLESS STEEL POST WITH BRASS CAP MARKED "WP T6N R38E S30/S31 199" AS A WITNESS POINT ALONG THE LINE BETWEEN SEC. 30 AND 31 SET BY THE BLM. FROM THE MONUMENT A 22" LARCH BEARS S85°30'E 36.3' AND A 25" FIR BEARS N53°15'W 8.3'.

FOUND 2 1/2" STAINLESS STEEL PIPE WITH BRASS CAP AT THE SECTION CORNER AS CALLED IN THE NOTES OF THE BLM SURVEY. FROM THE CORNER A 16" FIR BEARS N9°15'W 22.4', A 10" FIR BEARS S20°E 4.3', A 14" BEARS N65°15'W 14.52' AND A 8" FIR BEARS S59°W 9.57'.

BASIS OF BEARINGS

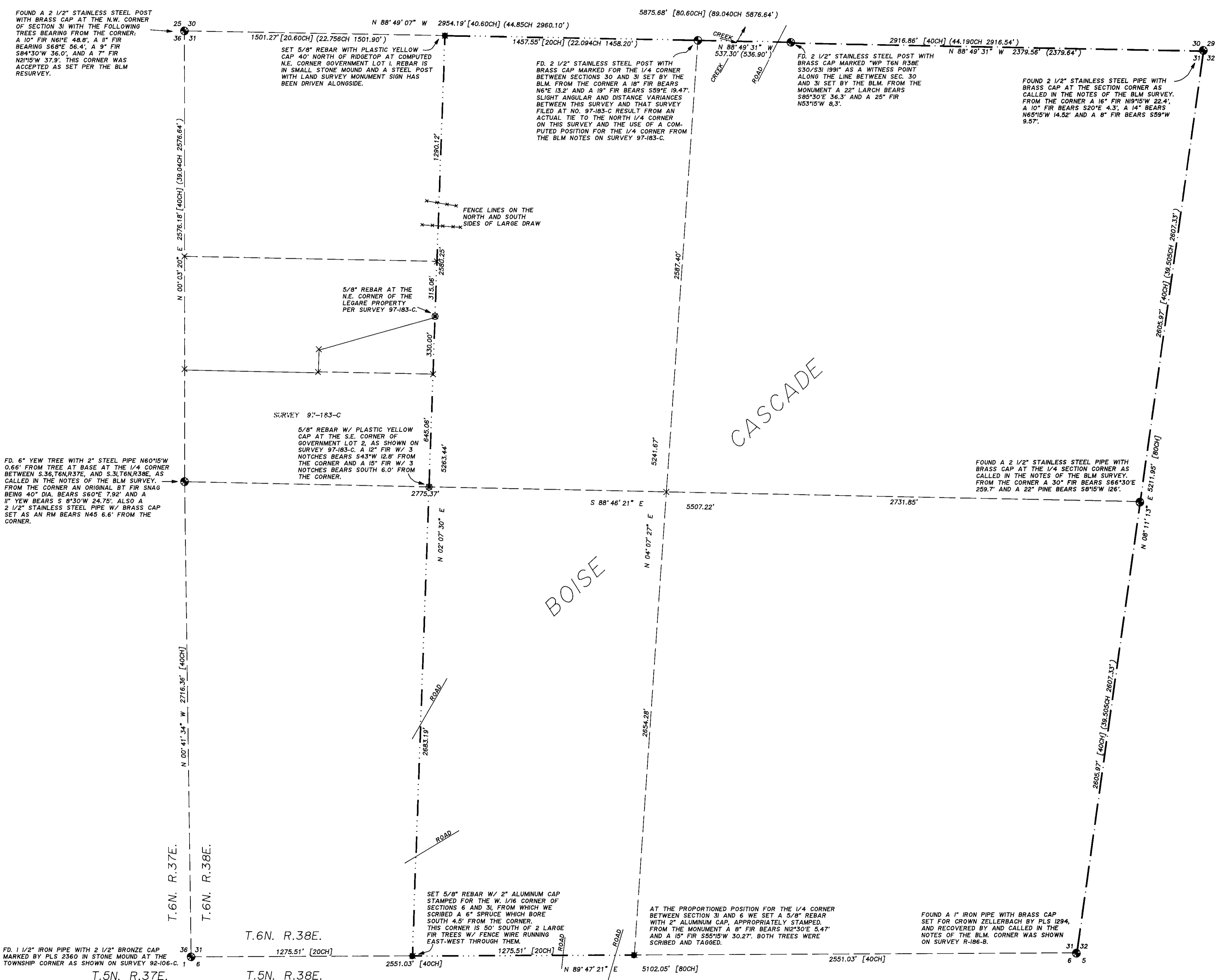
BEARINGS ARE BASED ON A SOLAR OBSERVATION PERFORMED USING THE LOCAL HOUR ANGLE METHOD AT A POINT 800' SOUTH OF THE S.E. CORNER OF SECTION 32, T6N, R38E, WM, ON JUNE 17, 1992.

LEGEND

- SECTION LINE SURVEYED AND POSTED BY THIS FIRM FOR THE USDA-FOREST SERVICE UNDER CONTRACT 53-04R3-2-20, DATED 3/4/92, IN THE SUMMER OF 1992.
- SECTION OR SECTION SUBDIVISION LINE SURVEYED, MONUMENTED, AND POSTED APPROXIMATELY EVERY 250' WITH STEEL POSTS OR BY MARKING TREES BETWEEN AUG. AND OCT. 1997.
- SECTION OF SECTION SUBDIVISION LINE.
- FOUND SURVEY MONUMENT OF RECORD AS NOTED.
- FOUND PROPERTY CORNER SET PER SURVEY 97-183-C.
- SET SECTIONAL SUBDIVISION MONUMENT AS NOTED.
- [] RECORD DIMENSION ORIGINAL GLO SURVEY
- () RECORD DIMENSION 1987 BLM SURVEY
- () RECORD DIMENSION SURVEY 92-106-C
- < > RECORD DIMENSION SURVEY R-186-B

NARRATIVE

THIS SURVEY WAS PERFORMED AT THE REQUEST OF BOISE CASCADE TO DELINEATE, MONUMENT AND POST THEIR DEED LINES IN SECTION 6, T5N, R38E, AND SECTION 31, T6N, R38E. ALL MONUMENTS USED TO CONTROL THE BREAKDOWN OF THESE SECTIONS ARE OF RECORD IN THE OFFICE OF THE SURVEYOR OF UMATILLA COUNTY. REFERENCES ARE GIVEN BESIDE EACH CORNER, AS MULTIPLE MONUMENTS EXIST AT THE NORTHWEST CORNER OF SECTION 31 WE HAVE HELD THE MONUMENT SET BY THE UNITED STATES OF AMERICA, DEPARTMENT OF THE INTERIOR, BUREAU OF LAND MANAGEMENT UNDER CONTRACT GROUP NO. 1405 DATED SEPT. 18, 1987. THIS SURVEY WAS PERFORMED USING A COMBINATION OF REAL TIME GPS TECHNIQUES USING TRIMBLE 4400 UNITS WITH STANDARD ERRORS OF 1CM ± 2PPM AND FIELD TRAVERSES USING A SOKKIA AUTOMATIC TOTAL STATION WITH STANDARD ERRORS OF 0°00'02" AND 3MM ± 2PPM. THE FIELD WORK FOR THIS SURVEY WAS PERFORMED BETWEEN AUGUST AND OCTOBER OF 1997.

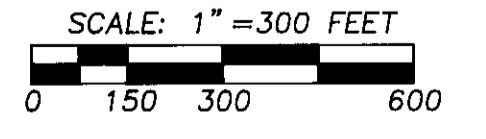


REGISTERED PROFESSIONAL LAND SURVEYOR

PAUL W.P. TOMKINS
2360

RENEWES 6/30/98
1/6/97

RECEIVED BY
Umatilla County Surveyor
Date 11-97
Rec'd by KR
No. 97-215-C

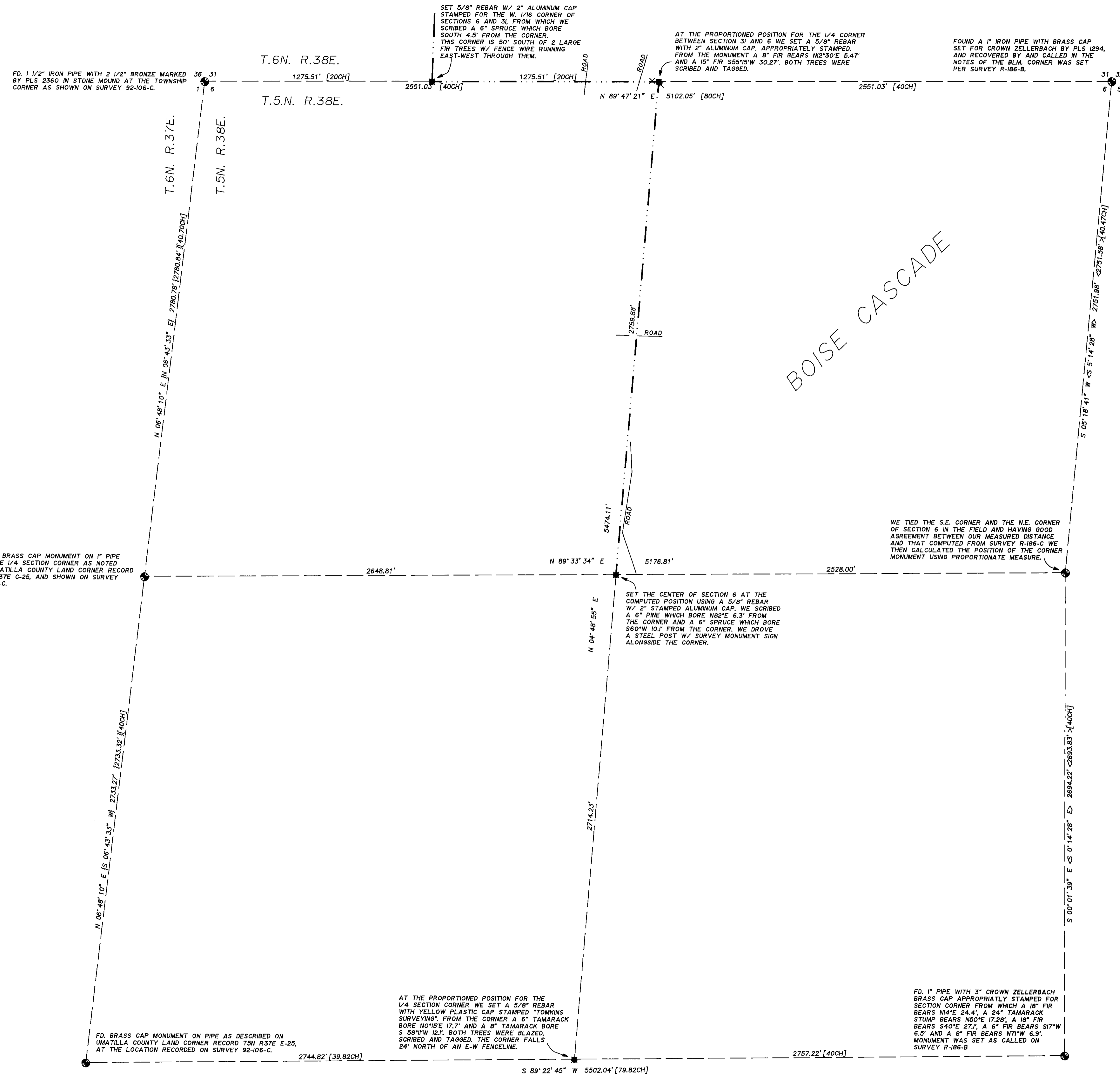


A SURVEY OF SECTION 31, T.6N., R.38E., W.M., AND SECTION 6, T.5N., R.38E., W.M., UMATILLA COUNTY, OREGON
FOR: BOISE CASCADE
90 S. 21st STREET ELGIN OR. 97827 (541)437-1689

SCALE
HOR. 1" = 300'
VERT. N/A
DATE
AUG.-OCT. 1997

PAUL W.P. TOMKINS, LAND SURVEYOR
20 EAST POPLAR ST. SUITE 204 WALLA WALLA, WA. 99362

BOSIES31.DWG
SHEET 1 OF 2



BASIS OF BEARINGS

BEARINGS ARE BASED ON A SOLAR OBSERVATION PERFORMED USING THE LOCAL HOUR ANGLE METHOD AT A POINT 800' SOUTH OF THE S.E. CORNER OF SECTION 32, T.6N., R.38E., WM, ON JUNE 17, 1992.

LEGEND

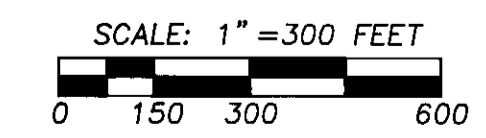
- SECTION LINE SURVEYED AND POSTED BY THIS FIRM FOR THE USDA-FOREST SERVICE UNDER CONTRACT 53-04R3-2-20, DATED 3/4/92, IN THE SUMMER OF 1992.
- SECTION OR SECTION SUBDIVISION LINE SURVEYED, MONUMENTED, AND POSTED APPROXIMATELY EVERY 250' WITH STEEL POSTS OR BY MARKING TREES BETWEEN AUG. AND OCT. 1997.
- SECTION OF SECTION SUBDIVISION LINE.
- FOUND SURVEY MONUMENT OF RECORD AS NOTED.
- ⊙ FOUND PROPERTY CORNER SET PER SURVEY 97-183-C.
- SET SECTIONAL SUBDIVISION MONUMENT AS NOTED.
- [] RECORD DIMENSION ORIGINAL GLO SURVEY
- () RECORD DIMENSION 1987 BLM SURVEY
- () RECORD DIMENSION SURVEY 92-106-C
- < > RECORD DIMENSION SURVEY R-186-B

NARRATIVE

THIS SURVEY WAS PERFORMED AT THE REQUEST OF BOISE CASCADE TO DELINEATE, MONUMENT AND POST THEIR DEED LINES IN SECTION 6, T.5N., R.38E., AND SECTION 31, T.6N., R.38E., ALL MONUMENTS USED TO CONTROL THE BREAKDOWN OF THESE SECTIONS ARE OF RECORD IN THE OFFICE OF THE SURVEYOR OF UMATILLA COUNTY. REFERENCES ARE GIVEN BESIDE EACH CORNER, AS MULTIPLE MONUMENTS EXIST AT THE NORTHWEST CORNER OF SECTION 31 WE HAVE HELD THE MONUMENT SET BY THE UNITED STATES OF AMERICA, DEPARTMENT OF THE INTERIOR, BUREAU OF LAND MANAGEMENT UNDER CONTRACT GROUP NO. 1405 DATED SEPT. 18, 1987. THIS SURVEY WAS PERFORMED USING A COMBINATION OF REAL TIME GPS TECHNIQUES USING TRIMBLE 4400 UNITS WITH STANDARD ERRORS OF 1CM ± 2PPM AND FIELD TRAVERSES USING A SOKKIA AUTOMATIC TOTAL STATION WITH STANDARD ERRORS OF 0'00'02" AND 3MM ± 2PPM. THE FIELD WORK FOR THIS SURVEY WAS PERFORMED BETWEEN AUGUST AND OCTOBER OF 1997.

REGISTERED PROFESSIONAL LAND SURVEYOR

PAUL W.P. TOMKINS
JULY 26, 1988
2360



11/6/99
66-92
92-215-C

A SURVEY OF SECTION 31, T.6N., R.38E., W.M., AND SECTION 6, T.5N., R.38E., W.M., UMATILLA COUNTY, OREGON		SCALE HOR. 1" = 300' VERT. N/A		PAUL W.P. TOMKINS, LAND SURVEYOR 20 EAST POPLAR ST. SUITE 204 WALLA WALLA, WA. 99362		BOSI2S6.DWG	
FOR: BOISE CASCADE 90 S. 21st STREET ELGIN OR. 97827 (541)437-1689		DATE AUG.-OCT. 1997				SHEET 2 OF 2	