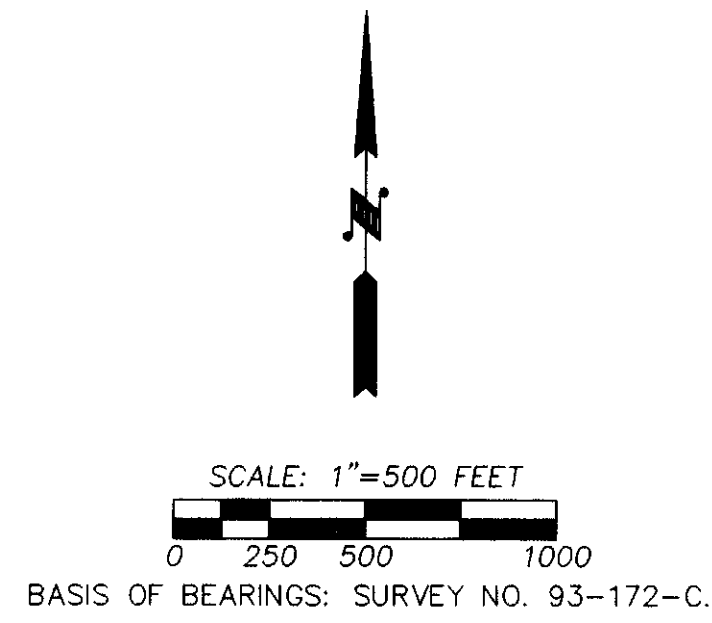
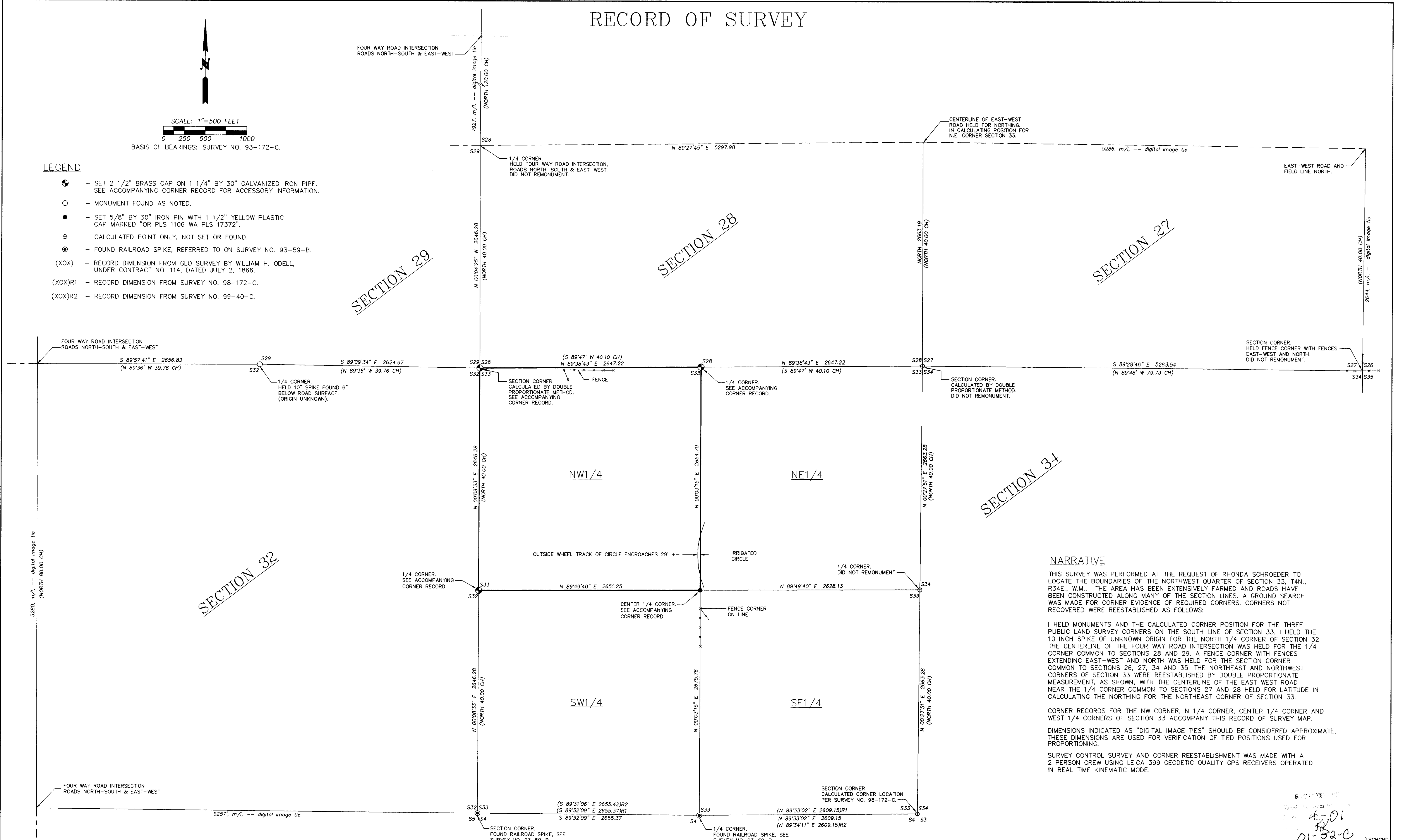


RECORD OF SURVEY



- LEGEND**
- ⊕ - SET 2 1/2" BRASS CAP ON 1 1/4" BY 30" GALVANIZED IRON PIPE. SEE ACCOMPANYING CORNER RECORD FOR ACCESSORY INFORMATION.
 - - MONUMENT FOUND AS NOTED.
 - - SET 5/8" BY 30" IRON PIN WITH 1 1/2" YELLOW PLASTIC CAP MARKED "OR PLS 1106 WA PLS 17372".
 - ⊕ - CALCULATED POINT ONLY, NOT SET OR FOUND.
 - ⊙ - FOUND RAILROAD SPIKE, REFERRED TO ON SURVEY NO. 93-59-B.
 - (XOX) - RECORD DIMENSION FROM GLO SURVEY BY WILLIAM H. ODELL, UNDER CONTRACT NO. 114, DATED JULY 2, 1866.
 - (XOX)R1 - RECORD DIMENSION FROM SURVEY NO. 98-172-C.
 - (XOX)R2 - RECORD DIMENSION FROM SURVEY NO. 99-40-C.



NARRATIVE

THIS SURVEY WAS PERFORMED AT THE REQUEST OF RHONDA SCHROEDER TO LOCATE THE BOUNDARIES OF THE NORTHWEST QUARTER OF SECTION 33, T4N., R34E., W.M.. THE AREA HAS BEEN EXTENSIVELY FARMED AND ROADS HAVE BEEN CONSTRUCTED ALONG MANY OF THE SECTION LINES. A GROUND SEARCH WAS MADE FOR CORNER EVIDENCE OF REQUIRED CORNERS. CORNERS NOT RECOVERED WERE REESTABLISHED AS FOLLOWS:

I HELD MONUMENTS AND THE CALCULATED CORNER POSITION FOR THE THREE PUBLIC LAND SURVEY CORNERS ON THE SOUTH LINE OF SECTION 33. I HELD THE 10 INCH SPIKE OF UNKNOWN ORIGIN FOR THE NORTH 1/4 CORNER OF SECTION 32. THE CENTERLINE OF THE FOUR WAY ROAD INTERSECTION WAS HELD FOR THE 1/4 CORNER COMMON TO SECTIONS 28 AND 29. A FENCE CORNER WITH FENCES EXTENDING EAST-WEST AND NORTH WAS HELD FOR THE SECTION CORNER COMMON TO SECTIONS 26, 27, 34 AND 35. THE NORTHEAST AND NORTHWEST CORNERS OF SECTION 33 WERE REESTABLISHED BY DOUBLE PROPORTIONATE MEASUREMENT, AS SHOWN, WITH THE CENTERLINE OF THE EAST WEST ROAD NEAR THE 1/4 CORNER COMMON TO SECTIONS 27 AND 28 HELD FOR LATITUDE IN CALCULATING THE NORTHING FOR THE NORTHEAST CORNER OF SECTION 33.

CORNER RECORDS FOR THE NW CORNER, N 1/4 CORNER, CENTER 1/4 CORNER AND WEST 1/4 CORNERS OF SECTION 33 ACCOMPANY THIS RECORD OF SURVEY MAP.

DIMENSIONS INDICATED AS "DIGITAL IMAGE TIES" SHOULD BE CONSIDERED APPROXIMATE. THESE DIMENSIONS ARE USED FOR VERIFICATION OF TIED POSITIONS USED FOR PROPORTIONING.

SURVEY CONTROL SURVEY AND CORNER REESTABLISHMENT WAS MADE WITH A 2 PERSON CREW USING LEICA 399 GEODETIC QUALITY GPS RECEIVERS OPERATED IN REAL TIME KINEMATIC MODE.

REGISTERED PROFESSIONAL LAND SURVEYOR <i>William R. Wells</i> OREGON JULY 22, 1977 WILLIAM R. WELLS 1106 RENEWS 6/30/02	WILLIAM R. WELLS, PLS 357 N.E. HWY. 11 P.O. BOX 1696 PENDLETON, OR 97801 PHONE: (541) 276-6362	PROJECT: SURVEY FOR: RHONDA SCHROEDER LOCATED IN THE NW1/4 OF SECTION 33, T4N., R34E., W.M., UMATILLA COUNTY, OREGON
	DATE: 03/01 DR. BY: WRW CK. BY: WRW NO: 01-758	