

BOUNDARY ADJUSTMENT FOR APPELGATE & NELSON

NARRATIVE

THE PURPOSE OF THIS SURVEY WAS TO LOCATE A DIVISION LINE BETWEEN "REVISED" TAX LOTS 10900 AND 11000, MAP 3N 32, WHICH ARE TO BE RECONFIGURED.

MONUMENTATION AND CORNER TIES ARE LIMITED TO THOSE SHOWN. THE RIGHT-OF-WAY OF THE PRESENT STATE HIGHWAY NO. 37 WAS CALCULATED BASED ON TIES TO EXISTING CERTAIN MONUMENTS ON THE WEST SIDE OF THE RIGHT-OF-WAY, AS SHOWN. THE LOCATION OF THE FORMER RIGHT-OF-WAY OF HIGHWAY 37 WAS NOT LOCATED, BUT IS PLOTTED AND USED FOR AREA CALCULATIONS. EXISTING FIELD LINES WERE LOCATED AT THE "WEST CANYON" AND "NORTH CANYON" AND USED FOR CALCULATING THE 30.0 ACRES OF FARM LAND NORTH AND WEST OF EXISTING TAX LOT 11000. OTHER AREA CALCULATIONS, IN UNSURVEYED AREAS, SHOULD BE CONSIDERED APPROXIMATE.

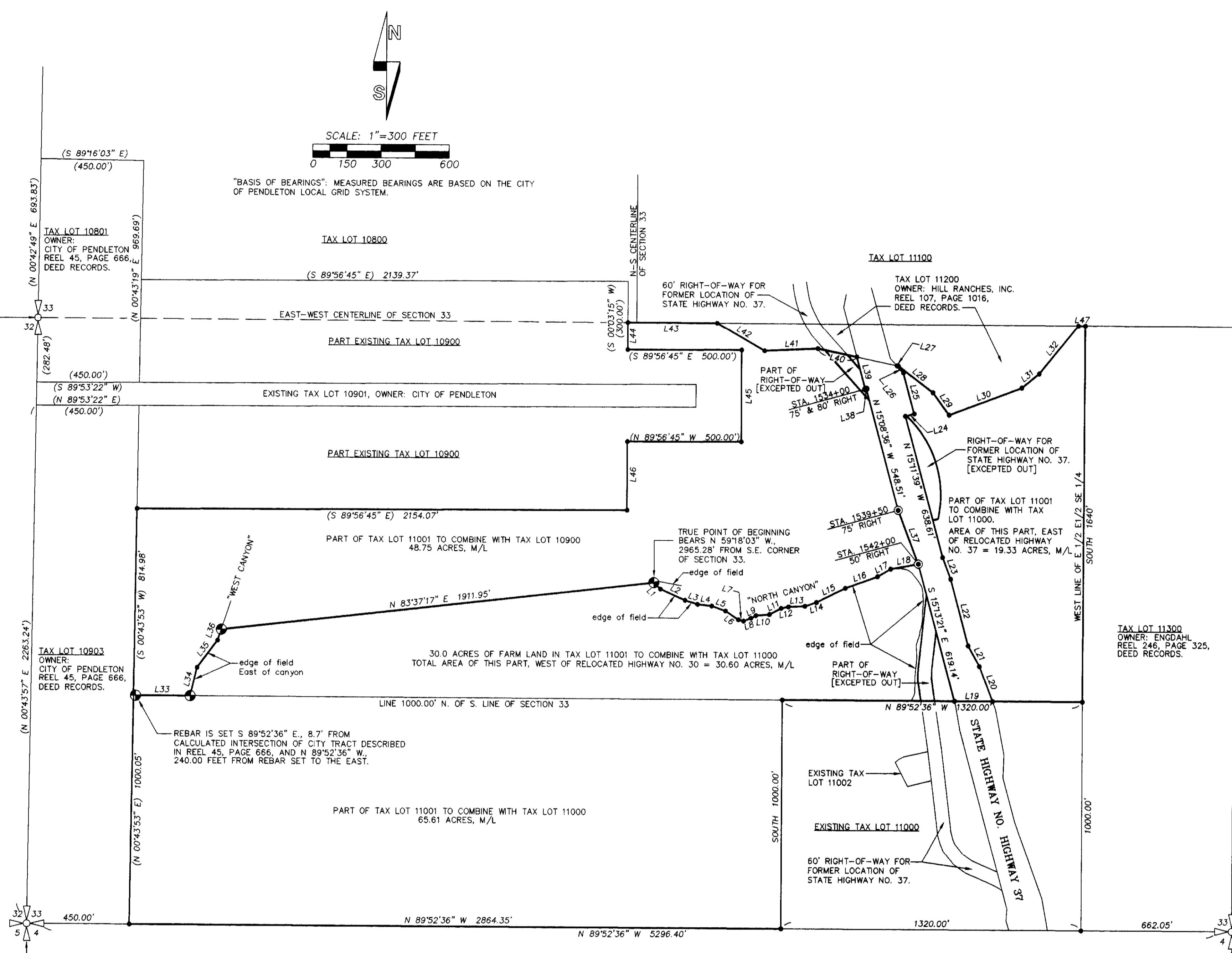
DESCRIPTIONS OF TRACTS TO ATTACH TO TAX LOT 10900 AND 11000 ARE SHOWN ON THIS MAP AND ARE ALSO PREPARED SEPARATELY ON LETTER SIZED SHEETS.

THE SURVEY WAS MADE WITH A 2 PERSON CREW USING A LEICA 399 GEODETIC GPS SYSTEM OPERATED IN STATIC OR REAL TIME KINEMATIC MODES.

LEGEND

- FOUND 3" BRASS DISK OR 2 1/2" BRASS CAP ON 1" GALV. IRON PIPE. FROM SURVEY NO. 88-019-C, UMATILLA COUNTY SURVEY RECORDS.
- FOUND STATE HIGHWAY MONUMENT, 1 1/2" ALUM. CAP ON 5/8" IRON REBAR.
- SET 5/8" BY 30" IRON REBAR WITH 1 1/2" YELLOW PLASTIC CAP MARKED "OR PLS 1106, WA PLS 17372."
- INDICATES ANGLE POINT IN BOUNDARY. ANGLE POINT CORNERS NOT SEARCHED OR FOUND.
- INDICATES RECORD DIMENSION FROM DEED TO TAX LOT CARD DESCRIPTION.

LINE NO.	BEARING	DISTANCE
L1	S 46°23'26" E	40.90'
L2	S 65°52'39" E	118.25'
L3	S 72°41'15" E	57.52'
L4	S 83°43'28" E	62.70'
L5	S 70°34'25" E	64.28'
L6	S 56°04'04" E	67.71'
L7	S 76°03'46" E	23.55'
L8	N 69°09'23" E	35.32'
L9	N 61°12'21" E	24.25'
L10	N 85°44'36" E	59.46'
L11	N 62°12'01" E	58.79'
L12	N 78°03'43" E	32.55'
L13	N 87°48'23" E	72.77'
L14	N 71°27'11" E	53.03'
L15	N 64°03'49" E	141.81'
L16	N 70°00'10" E	149.79'
L17	N 60°02'26" E	67.05'
L18	N 79°31'57" E	123.01'
L19	S 89°52'36" E	167.26'
L20	N 20°53'49" W	164.14'
L21	N 29°13'49" W	103.08'
L22	N 15°11'39" W	100.50'
L23	N 20°54'17" W	100.50'
L24	N 74°48'21" E	40.00'
L25	N 15°11'39" W	185.00'
L26	N 43°15'59" W	40' M/L
L27	S 76° E	6' M/L
L28	S 51° E	190.74'
L29	S 34° E	120.78'
L30	N 71°40' E	340.56'
L31	N 53°40' E	99.00'
L32	N 46° E	290.41'
L33	S 89°52'36" E	248.72'
L34	N 13°25'27" E	128.46'
L35	N 36°48'33" E	149.53'
L36	N 18°27'29" E	49.47'
L37	N 20°56'25" W	251.36'
L38	S 74°33'35" W	5.00'
L39	N 15°11'34" W	144' M/L
L40	N 76° W	176' M/L
L41	S 89°30' W	234.30'
L42	N 58° W	240.90'
L43	WEST	392' M/L
L44	S 00°03'15" W	119.15'
L45	S 00°03'15" W	400.00'
L46	S 00°03'15" W	300.00'
L47	EAST	24' M/L



AREA SUMMARY

AREA OF TAX LOT 11001 TO COMBINE WITH TAX LOT 11000 = 115.54 ACRES M/L
 AREA OF TAX LOT 11001 TO COMBINE WITH TAX LOT 10900 = 48.75 ACRES M/L
 EXISTING AREA OF TAX LOT 10900, PER TAX MAP 50.39 ACRES M/L
 (NOTE: AREA BY CALCULATION, PER THIS SURVEY IS = 48.26 ACRES, M/L)
 EXISTING AREA OF TAX LOT 11000, PER TAX MAP = 24.86 ACRES M/L
 ADJUSTED AREA OF TAX LOT 10900 = 48.26 + 48.75 = 97.01 ACRES, M/L***
 ADJUSTED AREA OF TAX LOT 11000 = 24.86 + 115.54 = 140.40 ACRES M/L
 *** USED AREA FOR EXISTING TAX LOT 10900, OF 48.26 ACRES, CALCULATED PER THIS SURVEY, FOR TOTAL REVISED TAX LOT ACREAGE.

PORTION OF TAX LOT 11001, MAP 3N 32, TO COMBINE WITH TAX LOT 11000.

A tract of land located in the South Half of Section 33, Township 3 North, Range 32 East, W.M., Umatilla County, Oregon, described as follows:

Commencing at the Southeast Corner of said Section 33; thence North 59°18'03" West a distance of 2965.28 feet to a 5/8 inch rebar; the TRUE POINT OF BEGINNING for this description; thence South 46°23'26" East a distance of 40.90 feet; thence South 65°52'39" East a distance of 118.25 feet; thence South 72°41'15" East a distance of 57.52 feet; thence South 83°43'28" East a distance of 62.70 feet; thence South 70°34'25" East a distance of 64.28 feet; thence South 56°04'04" East a distance of 67.71 feet; thence South 76°03'46" East a distance of 23.55 feet; thence North 69°09'23" East a distance of 35.32 feet; thence North 61°12'21" East a distance of 24.25 feet; thence North 85°44'36" East a distance of 59.46 feet; thence North 62°12'01" East a distance of 58.79 feet; thence North 78°03'43" East a distance of 32.55 feet; thence North 87°48'23" East a distance of 72.77 feet; thence North 71°27'11" East a distance of 53.03 feet; thence North 64°03'49" East a distance of 141.81 feet; thence North 70°00'10" East a distance of 149.79 feet; thence North 60°02'26" East a distance of 67.05 feet; thence North 79°31'57" East a distance of 123.01 feet to a point on the Westerly right-of-way line of Relocated State Highway No. 37, at Engineer's centerline station 1542+00 on said Westerly right-of-way line; thence South 15°11'39" West a distance of 100.50 feet; thence North 20°53'49" West a distance of 164.14 feet; thence North 29°13'49" West a distance of 103.08 feet; thence North 15°11'34" West a distance of 144 feet; thence North 20°54'17" West a distance of 100.50 feet; thence North 15°11'39" West a distance of 185.00 feet; thence North 43°15'59" West a distance of 40 feet; thence South 76° West a distance of 6 feet; thence South 51° East a distance of 190.74 feet; thence South 34° East a distance of 120.78 feet; thence North 71°40' East a distance of 340.56 feet; thence North 53°40' East a distance of 99.00 feet; thence North 46° East a distance of 290.41 feet to a point on the North line of the Southeast Quarter of said Section 33; thence leaving the Southeast Quarter of said Section 33, thence South 46°23'26" East, parallel with the South line of said Southeast Quarter a distance of 1640 feet, more or less, to a point located 1000.00 feet North of the South line of the Southeast Quarter of Section 33; thence South a distance of 1000.00 feet to a point on the South line of said Section 33, located 1320.00 feet West of the Southwest Corner of the East Half of the East Half of the Southeast Quarter of Section 33; thence North 89°52'36" West along the South line of said Section 33, when measured perpendicular to said South line, a distance of 248.7 feet, to a point located 1000.00 feet North of the South line of said Section 33, when measured perpendicular to said South line; thence South 89°52'36" East, parallel with said South line of Section 33 a distance of 248.7 feet to a 5/8 inch iron rebar; thence North 13°25'27" East a distance of 128.46 feet; thence North 36°48'33" East a distance of 149.53 feet; thence North 18°27'29" East a distance of 49.47 feet to a 5/8 inch iron rebar; thence North 83°37'17" East a distance of 1911.95 feet to the TRUE POINT OF BEGINNING.

EXCEPTING THEREFROM, the right-of-way of the former location of State Highway No. 37.
 Area of tract: 115.54 acres, more or less.

PORTION OF TAX LOT 11001, MAP 3N 32, TO COMBINE WITH TAX LOT 10900.

A tract of land located in Section 33, Township 3 North, Range 32 East, W.M., Umatilla County, Oregon, described as follows:

Commencing at the Southeast Corner of said Section 33; thence North 59°18'03" West a distance of 2965.28 feet to a 5/8 inch rebar; the TRUE POINT OF BEGINNING for this description; thence South 46°23'26" East a distance of 40.90 feet; thence South 65°52'39" East a distance of 118.25 feet; thence South 72°41'15" East a distance of 57.52 feet; thence South 83°43'28" East a distance of 62.70 feet; thence South 70°34'25" East a distance of 64.28 feet; thence South 56°04'04" East a distance of 67.71 feet; thence South 76°03'46" East a distance of 23.55 feet; thence North 69°09'23" East a distance of 35.32 feet; thence North 61°12'21" East a distance of 24.25 feet; thence North 85°44'36" East a distance of 59.46 feet; thence North 62°12'01" East a distance of 58.79 feet; thence North 78°03'43" East a distance of 32.55 feet; thence North 87°48'23" East a distance of 72.77 feet; thence North 71°27'11" East a distance of 53.03 feet; thence North 64°03'49" East a distance of 141.81 feet; thence North 70°00'10" East a distance of 149.79 feet; thence North 60°02'26" East a distance of 67.05 feet; thence North 79°31'57" East a distance of 123.01 feet to a point on the Westerly right-of-way line of Relocated State Highway No. 37, at Engineer's centerline station 1542+00 on said Westerly right-of-way line; thence South 15°11'39" West a distance of 100.50 feet; thence North 20°53'49" West a distance of 164.14 feet; thence North 29°13'49" West a distance of 103.08 feet; thence North 15°11'34" West a distance of 144 feet; thence North 20°54'17" West a distance of 100.50 feet; thence North 15°11'39" West a distance of 185.00 feet; thence North 43°15'59" West a distance of 40 feet; thence South 76° West a distance of 6 feet; thence South 51° East a distance of 190.74 feet; thence South 34° East a distance of 120.78 feet; thence North 71°40' East a distance of 340.56 feet; thence North 53°40' East a distance of 99.00 feet; thence North 46° East a distance of 290.41 feet to a point on the North line of the Southeast Quarter of said Section 33; thence leaving the Southeast Quarter of said Section 33, thence South 46°23'26" East, parallel with the South line of said Southeast Quarter a distance of 1640 feet, more or less, to a point located 1000.00 feet North of the South line of the Southeast Quarter of Section 33; thence South a distance of 1000.00 feet to a point on the South line of said Section 33, located 1320.00 feet West of the Southwest Corner of the East Half of the East Half of the Southeast Quarter of Section 33; thence North 89°52'36" West along the South line of said Section 33, when measured perpendicular to said South line, a distance of 248.7 feet, to a point located 1000.00 feet North of the South line of said Section 33, when measured perpendicular to said South line; thence South 89°52'36" East, parallel with said South line of Section 33 a distance of 248.7 feet to a 5/8 inch rebar; thence North 13°25'27" East a distance of 128.46 feet; thence North 36°48'33" East a distance of 149.53 feet; thence North 18°27'29" East a distance of 49.47 feet to a 5/8 inch rebar; thence North 83°37'17" East a distance of 1911.95 feet to the TRUE POINT OF BEGINNING.

EXCEPTING THEREFROM, the right-of-way of the former location of State Highway No. 37.
 Area of tract: 48.75 acres, more or less.

RECEIVED BY
 Umatilla County Surveyor
 7/20/01
 01-144-C

REGISTERED PROFESSIONAL LAND SURVEYOR
 WILLIAM R. WELLS
 OREGON
 JULY 22, 1977
 WILLIAM R. WELLS
 1106
 RENEWS 6/30/02

WILLIAM R. WELLS, PLS
 357 N.E. HWY. 11
 P.O. BOX 1696
 PENDLETON, OR 97801
 PHONE: (541) 276-6362
 DATE: 7/01 DR. BY: DMT
 CK. BY: WRW NO: 01-776

PROJECT:
 BOUNDARY ADJUSTMENT FOR:
 APPELGATE & NELSON
 LOCATED IN SECTION 33, TOWNSHIP 3 NORTH, RANGE 32 EAST, W.M., UMATILLA COUNTY, OREGON.

LANGRISH