

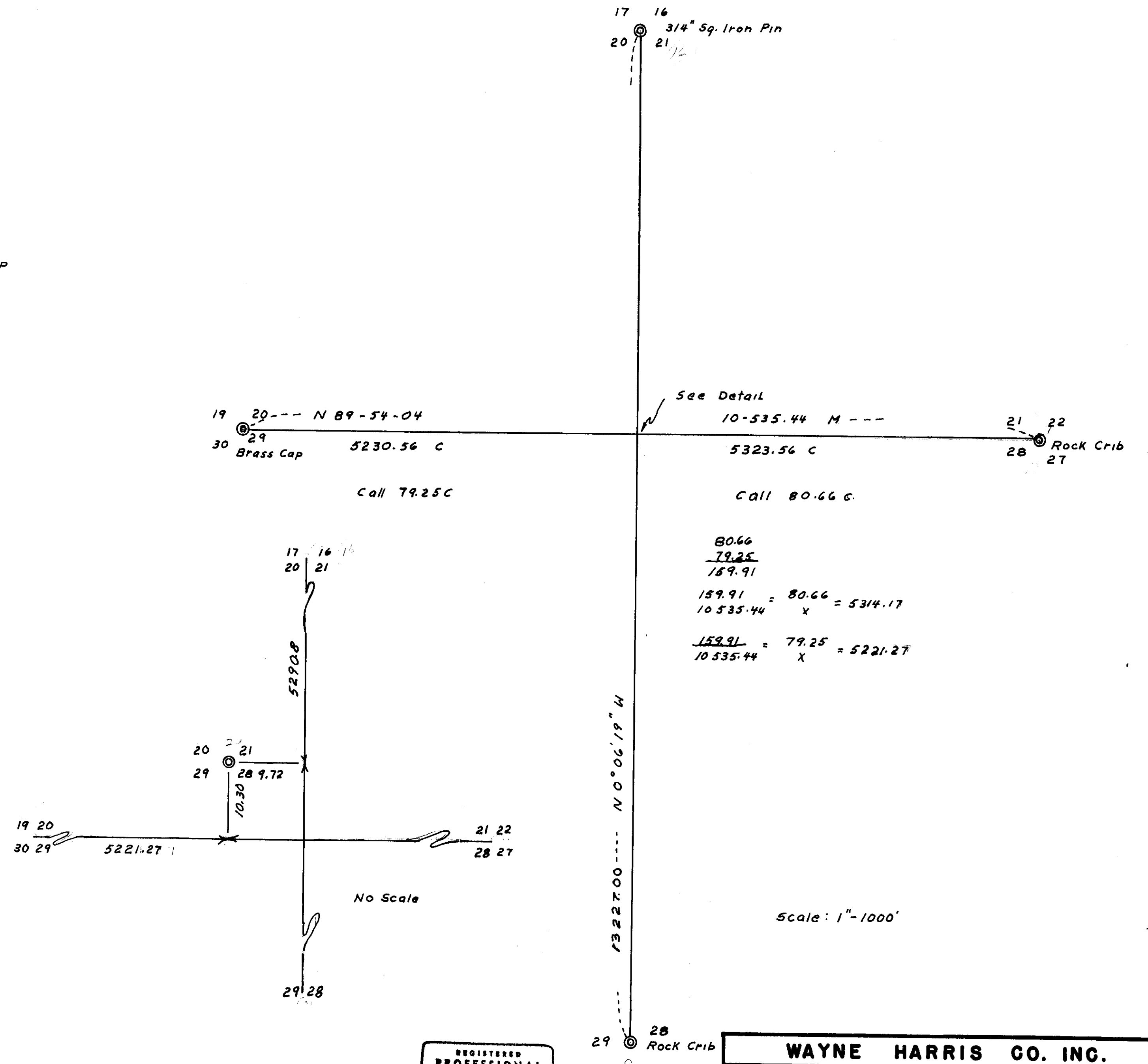
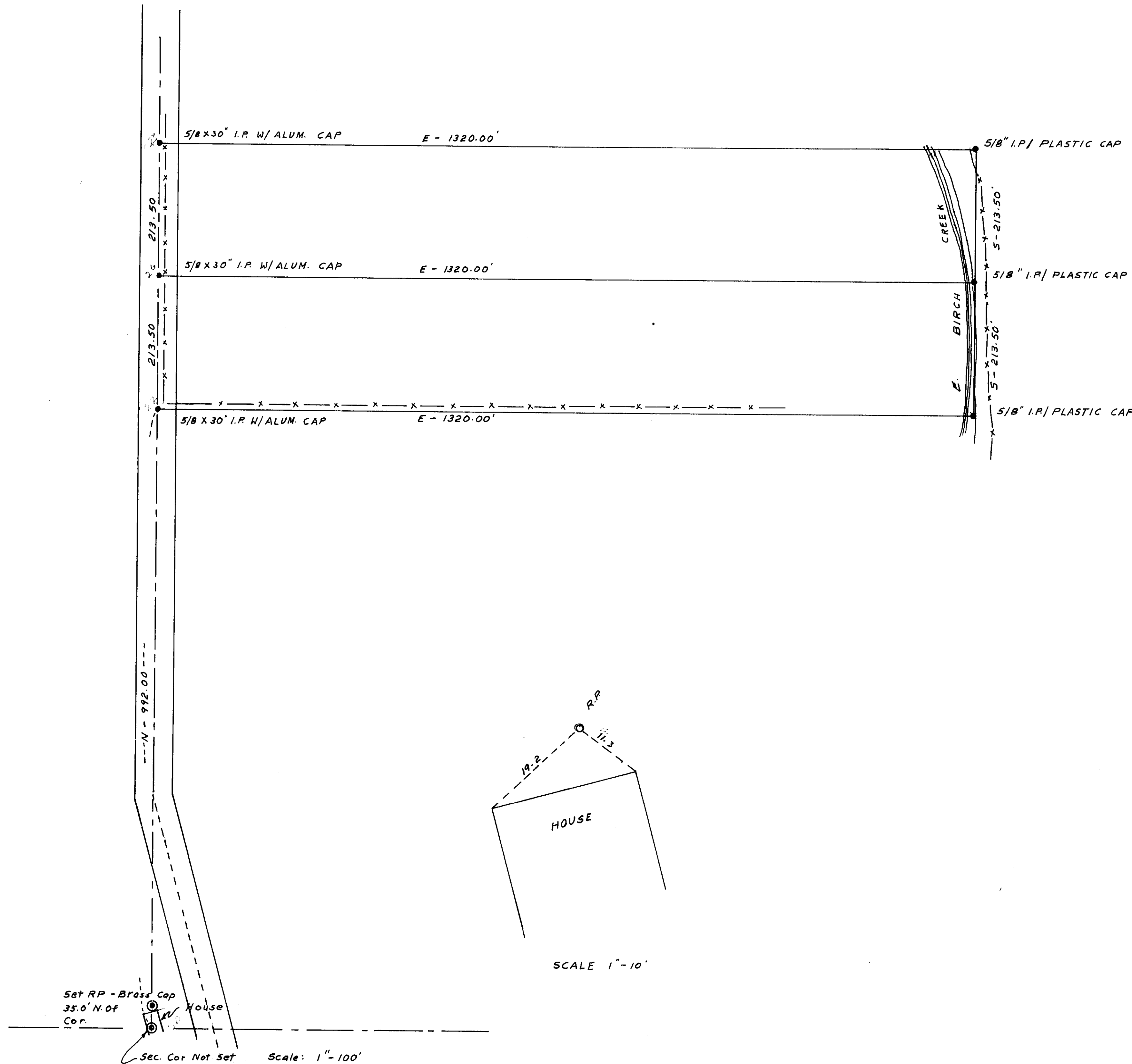
Narrative:

A search was made for evidences of the location of the Southwest corner of Section 21. Nothing conclusive could be located. I then proceeded to re-establish this corner by the double proportion method. The Northwest corner was monumented by a 3/4 inch iron pin in the center of the County Road. The quarter corner between Sections 28 and 29 was a rock crib with fences running North and East. The Southwest corner of Section 20 was a brass capped monument marked by Umatilla County Surveyor - 1974. The Southeast corner of Section 21 was another rock crib with fences running North and West. Distances were measured and checked against call distances and checked as follows:

Southwest corner Section 20 to Southeast corner Section 21	
Mess	10,535.44
Call	10,554.06
Diff	18.62
=	9.31 feet per mile
Northwest corner Section 21 to quarter corner Sections 28 and 29	
Mess	13,227.00
Call	13,200.00
Diff	27.00
=	2.80 feet per mile

These distances agree very well with the call distances. I called the rock crib corners acceptable and set the Southwest corner of Section 21 by double proportion as shown on drawing. The resulting West line of Section 21 I used as being true North and South, and proceeded to make the survey according to written description on the deed.

There were no recorded surveys in the Section and no highway ties to the Section corner. The Southwest corner of the Section fell under a house. I set an R. P. 35.00 feet North on the Section line.



REGISTERED PROFESSIONAL LAND SURVEYOR
Wayne O. Harris
MAY 6 1975
WAYNE O. HARRIS
346

WAYNE HARRIS CO. INC.
SURVEY FOR: DIXIE GUMISKY
LOCATION: SEC. 21 T. 1 S. R. 32 E., W. M.
DATE 10-4-91 FILE 1710
SCALE SHOWN JOB
DRAWN BY WCH DRAWING NO. 91-600E

03-242-C