

SHEET INDEX

RECEIVED BY
 Umatilla County Surveyor
 Date 7-04
 Rec'd By KK
 No. 04-129-g

SHEET 1 OF 4

REGISTERED
 PROFESSIONAL
 LAND SURVEYOR

William R. Wells
 OREGON
 JULY 22, 1977
 WILLIAM R. WELLS
 1106
 RENEWS 6/30/06

WILLIAM R. WELLS, PLS
 2602 NE RIVERSIDE PLACE
 P.O. BOX 1696
 PENDLETON, OR 97801
 PHONE: (541) 276-6362

DATE: 06/04	DR. BY: DMT
CK. BY: WRW	NO: 03-906

PROJECT: UMATILLA COUNTY
 SUBDIVISION TIES
 CITY OF PENDLETON
 AREA,
 T2N., R32E., W.M.



N: 738920.74'
E: 8624103.17'

N: 739029.82'
E: 8629347.86'

N: 736286.65'
E: 8624193.34'

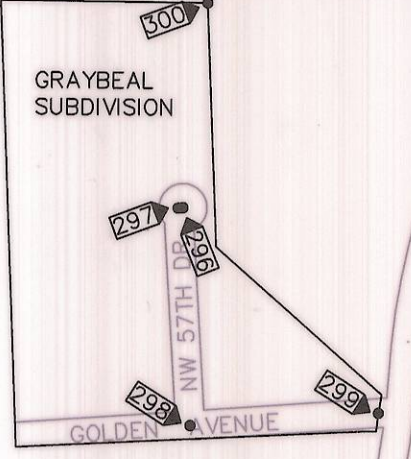
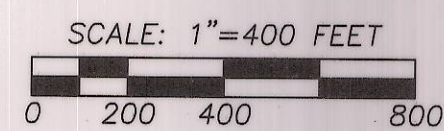
N: 736335.72'
E: 8626819.69'

N: 736379.96'
E: 8629453.74'

N: 736449.68'
E: 8632071.65'

N: 736519.08'
E: 8634688.92'

N: 733642.97'
E: 8624217.45'



LEGEND
 299 - INDICATES NOTE NUMBER FOR PENDLETON SUBDIVISION POINT REPORTED ON THIS SURVEY. SEE ACCOMPANYING NOTE NUMBER INDEX AND POINT DESCRIPTIONS AND COORDINATE VALUES.

REGISTERED PROFESSIONAL LAND SURVEYOR
William R. Wells
 OREGON
 JULY 22, 1977
 WILLIAM R. WELLS
 1106
 RENEWS 6/30/06

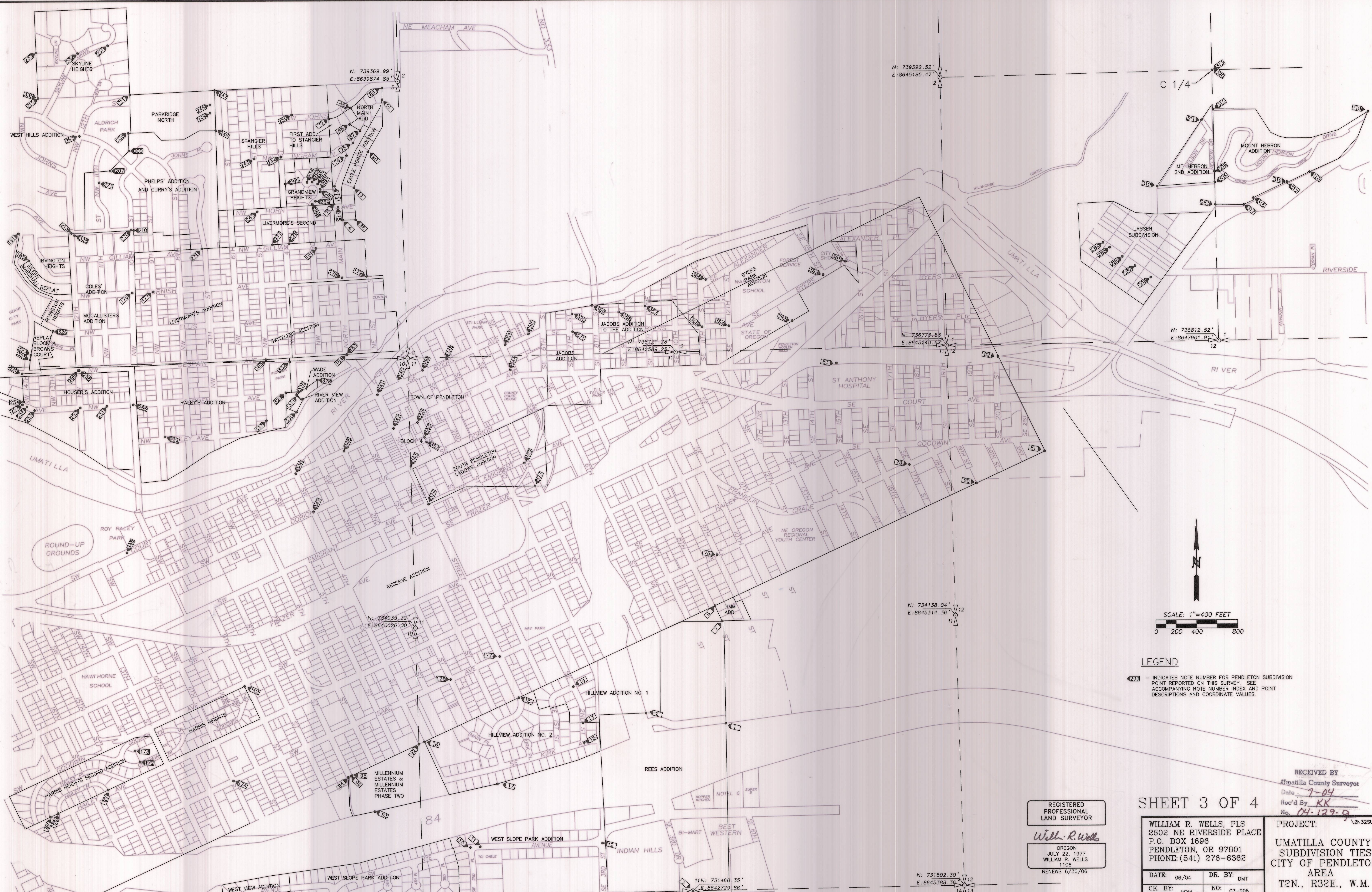
SHEET 2 OF 4

WILLIAM R. WELLS, PLS
 2602 NE RIVERSIDE PLACE
 P.O. BOX 1696
 PENDLETON, OR 97801
 PHONE: (541) 276-6362

DATE: 06/04 DR. BY: DMT
 CK. BY: WRW NO: 03-906

RECEIVED BY
 Umatilla County Surveyor
 Date: 7-04
 Rec'd by: KR
 No. 04-129-0

PROJECT:
 UMATILLA COUNTY
 SUBDIVISION TIES
 CITY OF PENDLETON
 AREA
 T2N., R32E., W.M.



N: 739369.99'
E: 8639874.85'

N: 739392.52'
E: 8645185.47'

C 1/4

N: 736721.28'
E: 8642589.24'

N: 736773.53'
E: 8645240.62'

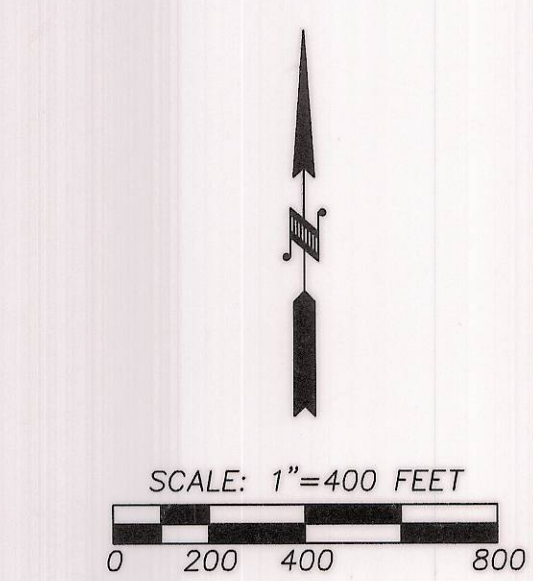
N: 736812.52'
E: 8647901.91'

N: 734035.32'
E: 8640026.00'

N: 734138.04'
E: 8645314.36'

N: 731460.35'
E: 8642729.86'

N: 731502.30'
E: 8645388.36'



LEGEND
 285 - INDICATES NOTE NUMBER FOR PENDLETON SUBDIVISION POINT REPORTED ON THIS SURVEY. SEE ACCOMPANYING NOTE NUMBER INDEX AND POINT DESCRIPTIONS AND COORDINATE VALUES.

REGISTERED PROFESSIONAL LAND SURVEYOR
William R. Wells
 OREGON
 JULY 22, 1977
 WILLIAM R. WELLS
 1106
 RENEWS 6/30/06

SHEET 3 OF 4

WILLIAM R. WELLS, PLS
 2602 NE RIVERSIDE PLACE
 P.O. BOX 1696
 PENDLETON, OR 97801
 PHONE: (541) 276-6362

DATE: 06/04	DR. BY: DMT
CK. BY: WRW	NO: 03-906

RECEIVED BY
 Umatilla County Surveyor
 Date: 7-04
 Rec'd By: KK
 No. 04-129-9
 PROJECT: UMATILLA COUNTY SUBDIVISION TIES CITY OF PENDLETON AREA T2N., R32E., W.M.

UMATILLA COUNTY PROJECT PLCP 2003, PENDLETON SUBDIVISIONS

NARRATIVE:

This survey was made at the request of the Umatilla County Surveyor and Board of County Commissioners to recover and measure positions to a limited number of existing corners in certain subdivisions within the Pendleton City Limits. Generally, a minimum of two corners were recovered and tied within each subdivision. Positions for corners tied were furnished in ascii file format and are also listed in the accompanying spreadsheet. A list of subdivisions completed under this contract follows this Narrative. Generally, replats and cemetery subdivisions are not included.

The purpose of the survey and measurements was to provide position data for subdivisions in the City of Pendleton area to assist in developing geographic information system base maps.

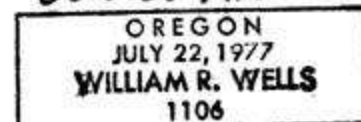
Point positions furnished are Oregon State Plane Coordinates, North Zone, NAD 1983(91). Normally, monuments were tied by G.P.S. real time kinematic methods using a Trimble 5700 geodetic G.P.S. system. In some cases, the monument to be tied could not be directly occupied with the G.P.S. rover. In these cases, offset point positions near the obstructed monument were measured by G.P.S. real time kinematic methods and ties to the obstructed monuments were measured using a Sokkia Set 4B five second total station. In making ties to obstructed corners by total station methods, a combined scale and elevation factor of 0.999881893 was used to reduce ground distances to grid distances. Positions of all G.P.S. base station control points used for the project are adjusted to the City of Pendleton Photo Control positions recorded in 1996.

In most subdivisions, we recovered and measured to four or more existing monuments, then compared the measurements to calculated plat record dimensions before accepting the best fitting monument positions to report. Included in monthly deliverables, beginning in December of 2003, were marked up copies of each subdivision plat indicating which tied monuments were held, the corresponding point number and general comments about the quality of the subdivision. These marked up maps should be utilized along with maps and information recorded with this Narrative to "resolve" each subdivision to the measured corner control for GIS mapping purposes.

The City of Pendleton's base map was used as a background for reporting tied point locations for this survey. In some areas, the base map is distorted or out of date, but serves the purpose of showing how the measured points fit relative to one another. Surveyors using this data should realize that other unreported monuments will exist in the subdivisions.



William R. Wells



renews 6-30-06

PENDLETON SUBDIVISIONS
Arnold & Raleys
Blakey Addition
Block 4 in Old Town
Blue Mt Heights
Brown Courts Addition
Byers Park Addition
Cammie Addition
Coles Addition
College View Addition
Crest-view
Eagle Pointe Addition
Edgewood Addition
Edwards Addition
Edwards Addition No. 2
Eileen Marshall Replat
First Addition to Stangier Hills
Graybeal Subdivision
Glendale
Gordons Tracts
Grandview Heights
Grecian Heights PUD
Harris Heights Addition
Harris Heights Second Addition
Hazel Addition
Hillview Addition No. 1
Hillview Addition No. 2
Hoffman First Addition
Hoffman Second Addition
Housers Addition
Iringtons Heights
Jacobs Addition
Jacob's 2nd Addition
LaDow Addition
Lassen Subdivision
Leen Addition
Livermores Addition
Livermore's 2nd Addition
McCallister's Add. See Coles Add.
McKay Park Addition
Millennium Estates
Millennium Estates Phase 2
Mont-View Addition
Montee Addition
Mt. Hebron Additon
Mt. Hebron Second Addition
North Foothills Addition
North Main Addition
Overlook Terrace
Parkridge North
ParkView Addition
Pendleton Estates Phase 1
Pendleton Estates, Phase 2
Pendleton Town of

Phelps and Curry Addition
Quinney Court Re-Plat
Raleys Addition
Rees Addition
Reserve Addition
Rice Addition
Rice Park Addition
River View Addition
Royal Ridge Subdivision
Sherwood Heights
Sherwood Park Addition
Sherwood Park 2nd Addition
Skyline Heights
South Pendleton LaDow
Southgate Addition
Stangier Hills
Sunridge Estate Phase 1
Sunridge Estates Phase 2
Sunrise South Addition
Sunset West Addition
Switzlers Addition
Timm Addition
Valley View Addition
Vuemont Addition
Wades Addition
Wal Mart Subdivision
West Hills
West Slope Park Addition
West View Addition
Youngs Addition
Youngs Second Addition

UMATILLA COUNTY
PENDLETON SUBDIVISIONS
NOTE NUMBER INDEX

1. (#1300) Found 5/8" rebar at Southeast corner of Block 2, Rees Addition.
2. (#1301) Found 5/8" rebar at most Westerly corner of Block 2, Rees Addition.
3. (#41) Found Initial Point of Rees Addition, a 2 1/2" brass cap at the South 1/4 Corner of Section 11.
4. (#1383) Found 5/8" rebar with a yellow plastic cap, at Southwest corner of Lot 1, Eagle Point Addition.
5. (#1319) Found a 1/2" rebar 2" below ground. the Northwest corner of Lot 2, Block 2, West View Addition.
6. (#1361) Found Initial Point of Timm Addition, a 2 1/2" brass cap, 4" below ground at fence corner, at Northwest corner of Timm Addition.
7. (#1331) Found the Southwest corner of Timm Addition, a 5/8" rebar 2" below ground.
8. (#1306) Found 5/8" rebar, 2" below ground, street centerline monument of SW Nye Avenue on the South line of West Slope Park Addition.
9. (#359) Found Initial Point of West Slope Park Addition and the section corner common to Sections 10, 11, 14, and 15, located on the South line of West Slope Park Addition. See certificate filed separately.
10. (#1305) Found 5/8" rebar, flush with pavement, at intersection of SW Nye Avenue and SW Second Street, in West Slope Park Addition.
11. (#1304) Found 5/8" rebar, flush with pavement, street centerline monument of SW Nye Avenue in West Slope Park Addition.
12. (#1303) Found lead plug in sidewalk, street intersection monument (original plat monument calls for a 5/8" rebar) of SE Third Street near East line of West Slope Park Addition.
13. (#1324) Found 5/8" rebar flush with pavement, street centerline monument, located in SE Second Street, on Northerly line of Hillview Addition No. 2, and the Southerly line of Hillview Addition No. 1.

14. (#1323) Found 5/8" rebar flush with pavement, street intersection monument at intersection of SE Second and SE Jay Avenue, in Hillview Addition No. 1.
15. (#1320) Found 3" brass disk flush with pavement, Reserve Boundary Monument 9, on North line of Hillview Addition No. 2, in South Main Street.
16. (#1322) Found Northwest corner of Hillview Addition No. 2, a 5/8" rebar, 2" below ground.
17. (#1336) Found Southwest corner of Lot 13, Block 4, Hillview Addition No. 2, a 1/2" rebar flush with ground.
18. (#1335) Found 5/8" rebar flush with pavement, street intersection monument, at intersection of Kirk Avenue and SE Second Street, in Hillview Addition No. 2.
19. (#1384) Found 5/8" rebar with yellow plastic cap, the Southeast corner of Lot 6, Eagle Pointe Addition.
20. (#1597) Found 5/8" rebar at Southwest corner of Lot 3, Block 4, Rice Addition.
21. (#1338) Found 5/8" rebar with 1 1/2" aluminum cap stamped "KEL 933" in monument box, street centerline monument, in SW Second Street, on North line of Hoffman's Second Addition.
22. (#1337) Found 5/8" rebar with 1 1/2" aluminum cap stamped "KEL 933" in monument box, street centerline monument, in SW Second Street, on South line of Hoffman's Second Addition.
23. (#1312) Found Initial Point for Pendleton Estates Phase I, a 5/8" rebar with yellow plastic cap flush with ground, at intersection of Westerly right-of-way of SW Nye and Northerly right-of-way of Tutuilla Road.
24. (#1314) Found 2" aluminum cap stamped "Barker PLS 636", flush with pavement at street intersection of SW 12th Drive and SW Nye Avenue in Pendleton Estates Phase I.
25. (#1315) Found 2" aluminum cap stamped "Barker PLS 636", flush with pavement at street centerline of SW 12th Drive on North line of Pendleton Estates Phase I.
26. (#1317) Found 2" aluminum cap stamped "Barker PLS 636", flush with pavement at street centerline of SW Nye Avenue on East line of Pendleton Estates Phase I.
27. (#1318) Found 2" aluminum cap stamped "Barker PLS 636", flush with pavement at street centerline of SW 10th Court in Pendleton Estates Phase I.
28. (#1307) Found Initial Point of West View Addition also the Initial Point for Sunset West Addition, a 2 1/2" brass cap in concrete, 8" below ground at Southwest corner of West View

Addition and also the North line of Sunset West Addition.

29. (#1327) Found 5/8" rebar 2" below pavement, street intersection monument of SW 14th Street and SW Marshall Avenue in Sunset West Addition.

30. (#1326) Found 5/8" rebar 2" below pavement, street centerline monument of SW Marshall Avenue in Sunset West Addition.

31. (#1325) Found 5/8" rebar 2" below pavement, street centerline monument of SW Marshall Avenue in Sunset West Addition.

32. (#1308) Found 5/8" rebar flush with pavement, street centerline monument of SW Marshall Place in Sunset West Addition.

33. (#1359) Found Southwest corner of Lot 7 of Hoffman First Addition, a 5/8" rebar.

34. (#1340) Found Southeast corner of Lot 7 of Hoffman First Addition, a 5/8" rebar with aluminum cap.

35. (#1358) Found Northeast corner of Lot 7 of Hoffman First Addition, a 5/8" rebar with aluminum cap.

36. (#1355) Found 3" brass cap in concrete flush with pavement, street centerline monument in SW Runnion Avenue located North of Hoffman First Addition.

37. (#1356) Found 3" brass cap in concrete flush with pavement, street centerline monument in SW Runnion Avenue located North of Hoffman First Addition.

38. (#1357) Found 3" brass cap in concrete flush with pavement, street centerline monument in SW Runnion Avenue located Northwesterly of Hoffman First Addition.

39. (#1346) Found 2" brass cap, street surface monument in centerline of SW Runnion Avenue at Southwest corner of Sunridge Estates Phase I.

40. (#1345) Found 2" brass cap, street surface monument in centerline of SW Runnion Avenue on West line of Sunridge Estates Phase I.

41. (#1344) Found 2" brass cap, street surface monument in centerline of SW Runnion Avenue on West line of Sunridge Estates Phase I.

42. (#1343) Found 2" brass cap, street surface monument at intersection of SW Runnion Avenue and SW Quinney Place on West line of Sunridge Estates Phase I.

43. (#1341) Found Initial Point of Sunridge Estates, Phase I, a 5/8" rebar with a yellow plastic cap marked "OR PLS 1106, WA PLS 17372", at the Northwesterly corner of Sunridge Estates Phase I, also on the Northerly right-of-way of SW Runnion Avenue.
44. (#1342) Found 2" brass cap, at Northwesterly corner of Sunridge Estates Phase I in the centerline of SW Runnion Avenue.
45. (#1360) Found 5/8" rebar with a yellow plastic cap marked "OR PLS 1106, WA PLS 17372", at Northwest corner of Lot 1, Sunridge Estates Phase I.
46. (#1350) Found 5/8" rebar with a yellow plastic cap marked "OR PLS 1106, WA PLS 17372", at the Northeast corner of Lot 2, Sunridge Estates Phase I.
47. (#1349) Found 5/8" rebar with a yellow plastic cap marked "OR PLS 1106, WA PLS 17372", on North line of Lot 5, Sunridge Estates Phase I.
48. (#1348) Found 5/8" rebar with a yellow plastic cap marked "OR PLS 1106, WA PLS 17372", at Northwest corner of Lot 8, Sunridge Estates Phase I.
49. (#1347) Found 5/8" rebar with a yellow plastic cap marked "OR PLS 1106, WA PLS 17372", at Northeast corner of Lot 27, Sunridge Estates Phase I.
50. (#1354) Found 5/8" rebar with a yellow plastic cap marked "OR PLS 1106, WA PLS 17372", at Southwest corner of Lot 53, Sunridge Estates Phase II.
51. (#1351) Found Initial Point of Sunridge Estates, Phase II, a 5/8" iron rod with a yellow plastic cap marked "OR PLS 1106, WA PLS 17372", at NW corner of Lot 28, Sunridge Estates Phase II.
52. (#1352) Found 5/8" rebar with a yellow plastic cap marked "OR PLS 1106, WA PLS 17372", on East line of Lot 40, Sunridge Estates Phase II.
53. (#1353) Found 5/8" rebar with a yellow plastic cap marked "OR PLS 1106, WA PLS 17372", at Southeast corner of Lot 42, Sunridge Estates Phase II,
54. (#282) Found 2 1/2" brass cap on 1 1/4" galvanized iron pipe on Westerly line of Preserved Area No. 5, Grecian Heights PUD. This is also the Center 1/4 Corner of Section 15.
55. (#1366) Found 5/8" rebar with yellow plastic cap at Northwest corner of Lot 32, Grecian Heights PUD.
56. (#1365) Found 5/8" rebar at Southwest corner Lot 25, Grecian Heights PUD.
57. (#44) Found Initial Point for Grecian Heights P.U.D., a 2 1/2" brass cap on a 1 1/4"

galvanized iron pipe at Southwest corner of preserved Area No. 1, Grecian Heights PUD, also the South 1/4 Corner of Section 15.

58. (#1364) Found 5/8" rebar with yellow plastic cap at asphalt street surface at centerline of Theta Court, Grecian Heights PUD.

59. (#1363) Found 5/8" rebar with yellow plastic cap at Northeast corner of Lot 79, Grecian Heights PUD.

60. (#1362) Found 5/8" rebar with yellow plastic cap at Southeast corner of Lot 78, Grecian Heights PUD.

62. (#1316) Found 5/8" rebar with 2" aluminum cap at paved street surface in centerline of SW 12th Drive on Northeasterly line of Pendleton Estates Phase II.

63. (#1311) Found 5/8" rebar with yellow plastic cap at Northwest corner of Lot 56B, Pendleton Estates Phase II.

64. (#1313) Found Initial Point for Pendleton Estates Phase 2, a 5/8" aluminum cap stamped "Krumbein Engr. PLS 933" on Westerly line of Lot 45B, Pendleton Estates Phase II.

65. (#1367) Found 5/8" rebar with yellow plastic cap at the Northwest corner of Lot 28, Royal Ridge Subdivision Phase I.

66. (#1368) Found 5/8" rebar with yellow plastic cap at Northeast corner of Lot 8, Royal Ridge Subdivision Phase I.

67. (#1369) Found 5/8" rebar with yellow plastic cap at Northwest corner of Lot 8, Royal Ridge Subdivision Phase I.

68. (#1370) Found Initial Point for Royal Ridge Subdivision Phase I, a 5/8" rebar with yellow plastic cap at Southwest corner of Lot 1.

69. (#1371) Found 5/8" rebar with yellow plastic cap at Southeast corner of Lot 17, Royal Ridge Subdivision Phase I.

70. (#1372) Found 5/8" rebar with yellow plastic cap at Northeast corner of Lot 28, Royal Ridge Subdivision Phase I.

71. (#1373) Found Initial Point for First Addition to Stangier Hills, and also the Initial Point for Grandview Heights. Tied in 2000, brass cap now destroyed.

72. (#1374) Found 1/2" rebar at Northwest Corner of Lot 8, Block 1, First Addition to Stangier

Hills, also the Northeast corner of Lot 1, Block 4, Stangier Hills.

73. (#1375) Found 5/8" rebar, with yellow plastic cap on Westerly right-of-way of North Main Street and Easterly line of Block 2, First Addition to Stangier Hills.

74. (#1376) Found 5/8" rebar, with yellow plastic cap on Easterly line of Block 2, First Addition to Stangier Hills.

75. (#1377) Found 5/8" rebar, with yellow plastic cap, the Southwest corner of Lot 3, Block 1, First Addition to Stangier Hills.

76. (#1390) Reserve Addition Monument #2, found 2 1/2" brass cap in concrete pad at ground surface, on West line of Reserve Addition.

77. (#1333) Reserve Addition Monument #5, found 2 1/2" brass cap at street surface at intersection of SW Isaac Avenue and South Main Street.

78. (#1387) Found "PK " nail at street surface, at intersection of SE Isaac Avenue and SE 9th Street in Reserve Addition.

79. (#1388) Reserve Addition Monument #7, found a 3" brass cap at street surface, at intersection of SE 17th and SE Isaac Avenue.

80. (#1389) Reserve Addition Monument #12, found stone with an "X" at ground surface at the intersection of extended SW 19th with the South line of Reserve Addition.

81. (#1391) Reserve Addition Monument #13, found stone with and "X" at Southeast corner of Reserve Addition.

82. (#1392) Reserve Addition Monument #14, found stone with an "X", at ground surface on West line of Reserve Addition.

83. (#1393) Reserve Addition Monument #8, found brass cap in a monument box located at intersection of Court Place and 15th Street.

84. (#1378) Found Initial Point for North Main Addition, a 5/8" rebar with 1 1/4" yellow plastic cap marked "OR PLS 1106, WA PLS 17372" at Northeast corner of North Main Addition.

85. (#1379) Found 5/8" rebar with 1 1/4" yellow plastic cap, marked "OR PLS 1106, WA PLS 17372" at Northwest corner of Lot 4, North Main Addition.

86. (#1380) Found 5/8" rebar with 1 1/4" yellow plastic cap, marked "OR PLS 1106, WA PLS 17372" at Westerly corner of Lot 3, North Main Addition.

87. (#1381) Found 5/8" rebar with 1 1/4" yellow plastic cap at Southerly corner of Lot 3, North Main Addition.
88. (#1382) Found Initial Point of Eagle Pointe Addition, a 5/8" rebar at Southeast corner of Lot 1, Eagle Pointe Addition.
90. (#1385) Found 5/8" rebar with 1 1/4" yellow plastic cap on Easterly line of Lot 12, Eagle Pointe Addition.
91. (#1386) Found 5/8" rebar with 1 1/4" yellow plastic cap at Northerly corner of Lot 18, Eagle Pointe Addition.
92. (#1394) Found Initial Point for Millennium Estates and Millennium Estates Phase II, a 2 1/2" brass cap monument at Northeast corner of Lot 7, Millennium Estates.
93. (#1395) Found a 5/8" rebar at Southwest corner Lot 3, Millennium Estates.
94. (#1398) Found a 5/8" rebar, bent at Northwest corner Lot 8, Millennium Estates.
95. (#1396) Found a PK nail with a brass washer on Northerly line of Millennium Estates Phase II.
96. (#1397) Found a 5/8" rebar on Northerly line of Millennium Estates Phase II.
97. (#1399) Found 1" outside diameter pipe near Southwesterly corner of Lot 1, Block 4, Harris Heights Second Addition.
98. (#1400) Found 1/2" smooth pin near Southwesterly corner Lot 13, Block 4, Harris Heights Second Addition.
99. (#1401) Found 3/4" pipe near Southeast corner Lot 13, Block 4, Harris Heights Second Addition.
100. (#1450) Found Initial Point for Crest-View, a 2 1/4" pipe at Northeast corner Lot 1, Block 1, Crest-View Addition.
101. (#1452) Found 1/2" rebar at Northwest corner of Lot 6, Block 2, Crest-View Addition.
102. (#1453) Found 1/2" rebar at Northwest corner Lot 7, Block 2, Crest-View Addition.
103. (#1454) Found 3/4" pipe at Southeasterly corner Lot 3, Block 12, Sherwood Heights Addition.

104. (#1455) Found Initial Point for Sherwood Park Tract Addition, a 2 1/2" pipe located at Southwest corner Lot 2, Block 13, Sherwood Heights Addition.
105. (#1456) Found 3/4" pipe at Southeast corner Lot 29, Block 7, Sherwood Heights Addition.
106. (#1457) Found 3/4" pipe on Easterly line Lot 2, Block 4, Sherwood Park Tract Addition.
107. (#1459) Found 3/4" pipe at Northwesterly corner Lot 5, Sherwood Park Tract Addition.
108. (#1460) Found 3/4" pipe at Northwesterly corner of Lot 8, Sherwood Park Tract Addition.
109. (#1461) Found 1/2" rebar on Northeasterly line Lot 1, Sherwood Park Tract Addition.
110. (#1402) Found 1/2" eye bolt at Northeast corner of Harris Heights Addition.
111. (#1467) Found bent 3/8" rebar at Southwest corner Lot 7, Block 3, Sherwood Park Tract Addition.
112. (#1468) Calculated Initial Point for Sherwood Heights Addition located at Northwest corner Lot 1, Block 12, Sherwood Heights Addition, calculated based on previous tie, before destruction.
113. (#1469) Found a 2 1/2" brass cap on East line of Block 13, Lot 1, Park View Addition.
114. (#1470) Found Initial Point for Mont-View Addition, a 2 1/2" brass cap in monument box at centerline of Southwest 33rd Street on North line of Mont-View Addition.
115. (#1474) Found a 1 1/2" aluminum cap marked "KEL" in monument box in centerline of SW Marshall Avenue in Park View Addition.
116. (#1475) 5/8" rebar with plastic cap at the Northwest corner Lot 3, Block 1, Park View Addition.
117. (#1476) Found 5/8" rebar on Westerly line of Lot 15, Block 2, Park View Addition.
118. (#1501) Found 3/4" rebar set in concrete, Parkview plat reports a 2" pipe. This monument is close to the Initial Point for Parkview Addition, but is not believed to be the true perpetuation of the Initial Point, calculations indicate true Initial Point is Southeast of rebar 2 to 3 tenths of a foot, nothing found for original Initial Point monument at Southeast corner Lot 15, Block 1, Park View Addition.
119. (#1202) Found Initial point for Young's Addition, Young's Second Addition and Blakley Addition, also the East 1/4 corner for Section 16, a 2 1/2" brass cap.

120. (#1504) Found 1 1/2" aluminum cap on 5/8" rebar at Northeast corner Lot 1, Block 2, Young's Addition.
121. (#1505) Found 1/2" rebar, not 5/8" as shown on plat at Northwest corner Lot 10, Block 5, Young's Addition.
122. (#1299) Found 1 1/2" aluminum cap on rebar in monument box at intersection of SW 37th Court and SW 37th Street, Cammie Addition.
123. (#1473) Found Initial Point to Cammie Addition, a 2 1/2" brass cap located on the East line of Lot 4, Block 1, Cammie Addition.
124. (#1477) Found 1 1/2" aluminum cap on rebar in monument box at intersection of SW 37th Street and Marshall Court, Cammie Addition.
125. (#1478) Found 5/8" rebar on West line of lot 12, Mont-View Addition and also the Southerly point of lot 15, Block 1, Cammie Addition.
126. (#1471) Found 2 1/2" brass cap in monument box in SW 33rd Street in Mont-View Addition. This is also the "PI" of street curve.
127. (#1472) Found 2 1/2" brass cap in monument box at centerline of SW 33rd Court in Mont-View Addition.
128. (#1502) Found 2" brass cap in monument box in centerline of SW Nye, Northwesterly corner of Sherwood Park Tract Second Addition.
129. (#1503) Found 1 1/2" brass cap in monument box on centerline of Nye Avenue, and the Southwesterly corner Sherwood Park Tracts.
130. (#1538) Initial Point for Edwards Addition calculated from found Witness Corner, a 5/8" rebar, 1.5 feet West located at Northwest corner Lot 38, Block 3, Edwards Addition.
131. (#1537) Found 5/8" rebar with yellow plastic cap at Northwest corner Lot 1, Block 2, Edwards Addition. This is not the 1/4 Corner.
132. (#15) Found brass cap monument at Southwest corner Block 8, Edwards Addition, also the Southwest corner of Section 16.
133. (#1517) Found 5/8" rebar on Northerly right-of-way of SW Quinney Avenue in Edwards Addition.
134. (#1522) Found 5/8" rebar at Southwest corner of lot 29, Block 2, Montee Addition.

135. (#1523) Found 1" pipe on East line of Lot 5, Block 2, Montee Addition.
136. (#1524) Found 3/4" outside diameter pipe at Southeast corner Lot 2, Block 7, Montee Addition.
137. (#1521) Found 1 1/2" aluminum cap by KEL at centerline of SW 45th Street on Northerly line of Leen Addition a Replat of Lots 12-14, Block 1 Valley View Estates.
138. (#1510) Found 5/8" rebar at Northeast corner Lot 6, Block 4, Young's Second Addition.
139. (#1511) Found 1/2" rebar at Northeast corner Lot 7, Block 1, Young's Second Addition.
140. (#1534) Found 1/2" rebar at Southwest corner Lot 36, Block 3, Edward's Addition.
141. (#1533) Found 5/8" rebar at Northwest corner Lot 1, Block 3, Edward's Addition.
142. (#1535) Found 5/8" rebar at Southwest corner Lot 41, Block 3, Edward's Addition.
143. (#1536) Found 5/8" rebar at Southwest corner Lot 1, Block 4, Edward's Addition.
145. (#1531) Found 5/8" rebar at Northeast corner Lot 9, Block 2, McKay Park Addition.
146. (#1532) Found Initial Point for McKay Park Addition, a 2" pipe at Northeast corner Lot 12, Block 2, Mckay Park Addition.
147. (#1539) Found Initial Point for Valley View Estates, a 2" oblong iron pipe without brass cap at Northwest corner Lot 1, Block 1, Valley View Estates.
148. (#1540) Found 1/2" rebar at Southwest corner Lot 11, Block 1, Valley View Estates.
149. (#1541) Found 5/8" rebar with yellow plastic cap at Northeast corner Lot 12, Block 1, Valley View Estates.
150. (#1542) Found 5/8" rebar with 1 1/2" aluminum cap in monument box in centerline of SW 45th Street in Valley View Estates.
151. (#1519) Found 5/8" rebar with a yellow plastic cap at Southeast corner Lot 3, Block 1, Valley View Estates.
152. (#1530) Found 5/8" rebar on East right-of-way of SW 45th Street on North line of Valley View Estates.
153. (#1543) Found 5/8" rebar with a yellow plastic cap located on East line of Lot 3 Leen

Addition - A Replat of Lots 12-14, Block 1 Valley View Estates.

154. (#1580) Found 5/8" rebar, bent at Southwest corner of Lot 33, Block 3, Glendale Addition.

155. (#1581) Found 5/8" rebar at Northeast corner of Lot 25, Block 3, Glendale Addition.

156. (#1584) Found Initial Point of Glendale Addition, a 2 1/2" outside diameter pipe, at Northeast corner of Glendale Addition.

158. (#1588) Found railroad spike at intersection of SW 18th Street and SW Runnion Drive in Rice Addition.

159. (#1589) Found railroad spike in centerline of SW 18th Street on Southerly line of Rice Addition.

160. (#1590) Found railroad spike in centerline of SW Quinney Avenue on Southerly line of Rice Addition.

161. (#1591) Found Initial Point for Rice Addition, a 2 1/2" outside diameter pipe located at Northeast corner of Rice Addition.

162. (#1595) Found 5/8" rebar on East right-of-way of SW 37th Street on Southerly line of Rice Addition.

163. (#1596) Found 5/8" rebar at Southeast corner of Lot 11, Block 10, Rice Addition.

164. (#1600) Found 5/8" rebar, bent, at centerline of SW Perkins Avenue on East line of Blakey Addition.

165. (#1586) Found 5/8" rebar, this monument along with #166 and #167 check well within themselves but do not check tie to quarter corner very well, (5 minutes angle off and distance is +/- 0.4' off). The original tie to the quarter corner on Southgate Addition may be bad. Located on East line of Block 2, Southgate Addition.

166. (#1604) Found 1/2" rebar, this monument along with #165 and #167 check well within themselves but do not check tie to quarter corner very well, (5 minutes angle off and distance is +/- 0.4' off). The original tie to the quarter corner on Southgate Addition may be bad. Located at Southeast corner Lot 5, Block 1, Southgate Addition.

167. (#1594) Found 5/8" rebar, this monument along with #165 and #166 check well within themselves but do not check tie to quarter corner very well, (5 minutes angle off and distance is +/- 0.4' off). The original tie to the quarter corner on Southgate Addition may be bad. Located at Southwest corner Lot 9, Block 1, Southgate Addition.

168. (#1598) Calculated Initial Point for Rice Park Addition, (initial point gone), at Northwest corner of Lot 15, Block A, Rice Park Addition.
169. (#1601) Found railroad spike at centerline of SW Runnion Place and Southeasterly line of Rice Park.
170. (#1602) Found 5/8" rebar, bent, on Westerly line Lot 3, Block A, Rice Park Addition.
171. (#1603) Found 1/2" rebar, bent, at Southeast corner Lot 19, Block A, Rice Park Addition.
172. (#1630) Found 5/8" rebar at Southeast corner Lot 5, Block 1, Harris Heights Second Addition.
173. (#1631) Found 5/8" rebar at Northeast corner Lot 5, Block 1, Harris Heights Second Addition.
174. (#1632) Found brass bolt at intersection of 11th and Isaac, Reserve Addition.
175. (#1633) Found railroad spike at intersection of Second and Isaac, Reserve Addition.
176. (#1792) Found PK nail at intersection of Furnish and Tenth Street.
177. (#1791) Found 5/8" rebar at intersection of Furnish and 9th in Livermore's Addition.
178. (#1787) Found 3/8" rebar centerline of North Main and North right-of-way of Furnish North of Switzler's Addition.
179. (#1786) Found 3/8" rebar on Westerly right-of-way of NE 1st Street, North of Switzler's Addition.
181. (#1768) Found 5/8" rebar at Northwest corner Block 15, Livermore's Addition.
183. (#1789) Found railroad spike in centerline of Main and Despain Street East, on South line of Switzler's Addition.
184. (#1788) Found 3/8" rebar at centerline of Main and Despain Street West, at South line of Switzler's Addition.
185. (#1790) Found PK nail at intersection of 5th and Despain on South line of Switzler's Addition.
188. (#1811) Found 5/8" rebar with red plastic cap, the Initial Point of Eileen Marshall Subdivision and the Northeast corner Lot 26, Block 8, Irvington Heights.

191. (#1814) Found concrete monument with brass pin on South line of West Hills Addition.
192. (#1605) Found 1 1/2" pipe with plastic inside at most Westerly corner Lot 5, Replat of Quinney Court.
193. (#1606) Found 1 1/4" pipe with a plastic screw on top at most Southerly corner of Lot 1, Replat of Quinney Court.
194. (#1607) Found 1/2" iron rebar with yellow plastic cap at Southwest corner Lot 3, replat of Quinney Court.
195. (#1640) Found 5/8" rebar with yellow plastic cap on Northerly line Lot 2, Wal-Mart Subdivision.
196. (#1641) Found brass washer at Northwest corner Lot 2, Wal-Mart Subdivision.
197. (#1642) Found brass washer on Northerly line of Lot 3, Wal-Mart Subdivision.
198. (#1643) Found brass washer on Northerly line of Lot 4, Wal-Mart Subdivision.
199. (#1644) Found brass washer on Northerly line of Lot 5, Wal-Mart Subdivision.
200. (# 1645) Found 5/8" rebar with yellow plastic cap at Northwest corner of Wal-Mart Subdivision.
201. (#1700) Found Initial Point for the Wal-Mart Subdivision, a 5/8" rebar with yellow plastic cap, at Southwest corner Lot 5, Wal-Mart Subdivision.
202. (#1653) Found 5/8" rebar with red plastic cap, at Southeast corner of Plat of North Foothills Addition.
203. (#1654) Found 5/8" rebar with yellow plastic cap, PLS 1106, 12.50 feet West of the Southwest corner of Lot 11, North Foothills Addition.
204. (#1655) Found 5/8" rebar with yellow plastic cap, PLS 1106, 6.50 feet East of the Southeast corner of Lot 12, North Foothills Addition.
205. (#1656) Found Initial Point for the Plat of North Foothills Addition to the City of Pendleton, a 5/8" rebar with a red plastic cap, PLS 1333 at the Northwest corner of Lot 18, Plat of North Foothills Addition.
206. (#1657) Found 5/8" rebar at Northerly point of College View Addition on Northerly right-of-way of NW 21st Street.

207. (#1579) Found 5/8" rebar at position of a bent 1" outside diameter pipe at Southeast corner of Lot 1, Block 8, West Hills Addition. Also a point on the North line Lot 3, Block 7, Phelps and Curry's Addition.
208. (#1634) Found a 1" outside diameter pipe, bent, on Easterly line of Lot 2, Block 9, West Hills Addition. Also, the Northwest corner Lot 13, Block 6, Phelps and Curry's Addition.
209. (#1635) Found a 1" outside diameter pipe on Easterly line of Lot 1, Block 9, West Hills Addition. Also the Southwest corner Lot 1, Block 7, Phelps and Curry's Addition.
210. (#1637) Found Initial Point for Phelps Addition and Curry's Addition, a 5/8" rebar, also the C-S 1/16th corner, Section 3.
211. (#1663) Found Initial Point for Parkridge North and Skyline Heights, a nail with cross in concrete at Southeast Corner of Lot 22, Skyline Heights. This is also the Center 1/4 Corner of Section 3.
212. (#1795) Found 4" shaft with "x", 0.75' East of Southwest corner Lot 1, Block 1, Skyline Heights.
213. (#1770) Found railroad spike at intersection of NW 12th Street and NW Horn Avenue, West Hills Addition.
214. (#1646) Found Initial Point for Overlook Terrace Subdivision, a 2" brass cap at Southeasterly corner Lot 15, Overlook Terrace Subdivision.
215. (#1647) Found 2" brass cap at centerline of River View Drive and Easterly right-of-way of 28th Drive SW, Overlook Terrace Subdivision.
216. (#1648) Found 1/2" rebar in right-of-way of 28th Dr. SW, South of Overlook Terrace Subdivision. This monument is called on subdivision plat.
217. (#1649) Found 2" brass cap in centerline of Overlook Place, Overlook Terrace Subdivision.
218. (#1650) Found 2" brass cap at intersection of Overlook Street and Overlook Place, Overlook Terrace Subdivision.
219. (#1651) Found 2" brass cap at intersection of River View Drive and Overlook Street, Overlook Terrace Subdivision.
220. (#1723) Found 2" brass cap at intersection of River View Drive and Terrace Drive, Overlook Terrace Subdivision.

221. (#1658) Found 5/8" rebar at centerline of NW 21st Street, College View Addition.
222. (#1659) Found 5/8" rebar at centerline of NW 21st Street and on South line of College View Addition.
223. (#1662) Found 5/8" rebar at intersection of NW Gilliam Avenue and NW 21st Drive, College View Addition.
224. (#1599) Calculated Northeast corner of Rice Park Addition.
228. (#1755) Found 1/2" rebar at Southwest Corner Lot 13, Block 4, College View Addition.
229. (#1733) Found 5/8" rebar at Southwest Corner Lot 10, Block 4, College View Addition.
230. (#1756) Found 1/2" rebar at Southeast corner Lot 3, Block 4, College View Addition.
231. (#1735) Found 5/8" rebar on North line of Lot 4, Block 1, Skyline Heights.
232. (#1764) Found 5/8" rebar at Southwest corner Lot 9, Block 1, Skyline Heights.
233. (#1775) Found 1/2" rebar at Southwest corner Lot 4, Block 1, Skyline Heights.
234. (#1638) Found 5/8" rebar on railroad right-of-way with red plastic cap on Northerly line of Lot 30, Hazel Addition.
235. (#1639) Found 5/8" rebar with aluminum cap 10.00 feet from East line of Hazel Street on railroad right-of-way on North line of Lot 14, Hazel Addition.
236. (#1701) Found 5/8" rebar with red plastic cap 10.00 feet from East line of Hazel Street on North line of Lot 23, Hazel Addition.
237. (#1702) Found 5/8" rebar with red plastic cap 10.00 feet from East line of Hazel Street on North line of lot 24, Hazel Addition.
242. (#1683) Found 2" brass disk, by City of Pendleton, in monument box at intersection of NW 5th and NW Horn Avenue, in Livermore's Second Addition.
243. (#1684) Found 5/8" rebar at intersection of NW 5th Street and NW Ingram Lane, Stangier Hills.
244. (#1685) Found 3" brass disk by City of Pendleton at intersection of NW 4th and NW Ingram Lane, Stangier Hills.

246. (#1734) Found 5/8" rebar with 1 1/2" aluminum cap, KEL at Southeast corner of Parkridge North.
247. (#1758) Found 5/8" rebar at Northeast corner of Parkridge North. This is also the Northwest corner of Lot 1, Block 2, Stangier Hills.
248. (#1759) Found 5/8" rebar at point on East line of Parkridge North.
249. (#1760) Found 5/8" rebar at point on East line of Parkridge North.
250. (#1794) Found 5/8" rebar with yellow plastic cap at Southwest corner Lot 2, Block 1, Stangier Hills.
251. (#1688) Found 3" brass cap at intersection of NW 11th Street and Carden Street, Houser's Addition, by City of Pendleton.
252. (#1689) Found 3" brass disk, set by City of Pendleton, found at intersection of NW 12th and Carden Street, Houser's Addition.
253. (#1690) Found 3" brass disk, set by City of Pendleton, at centerline of Carden Street, Houser's Addition.
254. (#1693) Found 2" brass disk at Southeast corner of Lot 5, Block 1, Houser's Addition, set by City of Pendleton.
255. (#1695) Found 3" brass disk, set by City of Pendleton, at intersection of Carden and NW 10th, Houser's Addition.
256. (#1691) Found 3" brass disk, set by City of Pendleton, in centerline of Carden Street and Northwest 14th Street, Houser's Addition.
257. (#1692) Found 3" brass disk, set by City of Pendleton, in centerline of Carden Street, Houser's Addition.
258. (#1718) Found PK nail in intersection of Despain and 12th Street, North, set by City of Pendleton, Houser's Addition.
259. (#1719) Found PK nail at intersection of Despain and 12th Street, South, set by City of Pendleton, Houser's Addition.
260. (#1724) Found railroad spike on centerline of SW Goodwin Avenue, Vuemont Subdivision.
261. (#1725) Found railroad spike on Northerly line of Lot 12, Vuemont Subdivision.

262. (#1726) Found railroad spike on Northerly line of Lot 13, Vuemont Subdivision.
263. (#1763) Found railroad spike at intersection of NW King and NW 12th, West Hills Addition.
264. (#1727) Found railroad spike, bent, at centerline of SW Goodwin Avenue, Vuemont Subdivision.
265. (#1728) Found 5/8" rebar with yellow plastic cap, PLS 1094, on East line of Lot 11, Vuemont Subdivision.
266. (#1729) Found railroad spike in Lot 2, Vuemont Subdivision.
267. (#1730) Found railroad spike in Lot 3, Vuemont Subdivision.
268. (#1731) Found railroad spike on Northerly line of Lot 3, Vuemont Subdivision.
269. (#1732) Found railroad spike located in Lot 8, Vuemont Subdivision.
270. (#1636) Found railroad spike, at intersection of 10th Street and Horn Avenue, Phelp's and Curry's Addition. This railroad spike now removed by sewer trenching.
271. (#1762) Found 1 1/2" outside diameter pipe at Southeast corner of Lot 1, Block 4, Phelp's and Curry's Addition.
273. (#1769) Found 1" pipe at Northwest corner Lot 19, Block 2, Phelp's and Curry's Addition.
275. (#1767) Calculated position of old stone location per Initial Point of Stangier Hills First Addition. This is the intersection of Main and Horn Streets at Northeast corner of Livermore's Second Addition.
277. (#1810) Found railroad spike at Southwest corner of Lot 6, Block 3, Livermore's Second Addition.
278. (#1797) Southwest Corner of Lot 7, Block 2, Livermore's Second Addition, calculated from brass washer witness corner 1.00' South.
279. (#1661) Found 2" brass cap at centerline of NW 21st Drive, Blue Mountain Heights.
280. (#1708) Found 5/8" rebar at Northeast corner Lot 3, Block 2, Blue Mountain Heights.
281. (#1660) Found 3/4" slick pin at Southeast corner Lot 5, Block 2, Blue Mountain Heights.

282. (#302) Found Initial point for Blue Mountain Heights, a brass cap in concrete at Southeast corner Lot 5, Block 3, Blue Mountain Heights. This is also the Southeast corner of Section 4.

283. (#1860) Found 3/4" pipe, Survey No. I-19-C, also S-C 1/16th Corner Section 1, Northwesterly of Plat of Lassen Subdivision.

284. (#1850) Found railroad spike in Lot 9, Block 3, Plat of Lassen Subdivision, see plat markup and record surveys.

285. (#1851) Found railroad spike in Lot 3, Block 3, Plat of Lassen Subdivision, see plat markup and record surveys.

286. (#1852) Found railroad spike in Lot 3, Block 3, Plat of Lassen Subdivision, see plat markup and record surveys.

287. (#1853) Found railroad spike in Lot 8, Block 2, Plat of Lassen Subdivision, see plat markup and record surveys.

288. (#1831) Found PK nail at intersection of NW 3rd Drive and NW Horn Avenue, Grandview Heights.

289. (#1832) Found PK nail at centerline of NW 3rd Drive, Grandview Heights.

290. (#1833) Found PK nail at centerline of NW 3rd Drive, Grandview Heights.

291. (#1834) Found PK nail at centerline of NW 3rd Drive, Grandview Heights.

292. (#1835) Found PK nail at centerline of NW 3rd Drive, Grandview Heights.

293. (#1836) Found PK nail at centerline of NW 3rd Drive, Grandview Heights.

294. (#1837) Found PK nail at centerline, at end of cul-de-sac, of NW 3rd Drive, Grandview Heights.

295. (#1838) Found 1/2" rebar at Northwest corner Lot 21, Grandview Heights.

296. (#1823) Found 2" brass cap in concrete at centerline of 57th Drive, Graybeal Subdivision.

297. (#1824) Found 2" brass cap in concrete at centerline of 57th Drive, Graybeal Subdivision.

298. (#1825) Found 2" brass cap in concrete at intersection of NW 57th Drive and Golden Avenue, Graybeal Subdivision.

299. (#1826) Found 2" brass cap in concrete in centerline of Golden Avenue on East line of Graybeal Subdivision.
300. (#1827) Found Initial Point for Graybeal Subdivision, a 5/8" rebar at Northeast corner Lot 3, Graybeal Subdivision.
301. (#1593) Found concrete nail at centerline of Runnion Court, Sunrise South Addition.
302. (#1817) Calculated Initial Point for Sunrise South Addition, calculated relative to Initial Point of Glendale and found monuments in Sunrise South.
303. (#1821) Found 5/8" rebar at Northeast corner Lot 7, Sunrise South Addition.
304. (#1822) Found 5/8" rebar on Easterly line of Lot 6, Sunrise South Addition.
306. (#1854) Found PK nail in Lot 3 of Lassen Subdivision, see plat markup and record surveys.
307. (#1855) Found 3/4" slick rod at Southwest corner Lot 9, Block 1, Mt. Hebron Addition.
308. (#1862) Found 1/2" slick rod at Southeast corner Lot 1, Mt. Hebron Second Addition. Also the Southwest corner of Lot 19, Block 1, Mt. Hebron Addition.
309. (#1863) Found 1/2" slick rod at Northeast corner Lot 1, Mt. Hebron Second Addition. Also the Northwest Corner of Lot 19, Block 1, Mt. Hebron Addition.
310. (#1864) Found 1/2" slick rod at Southwest corner Lot 4, Mt. Hebron Second Addition.
311. (#1865) Found 5/8" rebar with red plastic cap at most Northerly corner of Lot 10, Mt. Hebron Second Addition.
312. (#1869) Found 5/8" rebar with yellow plastic cap, at Northwest Corner Lot 23, Block 1, Mt. Hebron Addition.
313. (#1903) Found 1 1/2" outside diameter pipe, by Harris, Survey No. Q-1121-B, for Center 1/4 Corner of Section 1.
315. (#1856) Found 3/4" slick rod on Southerly line Lot 12, Block 1, Mt Hebron Addition.
316. (#1857) Found 3/4" slick rod on Southerly line Lot 12, Block 1, Mt. Hebron Addition.
317. (#1858) Found 3/4" slick rod at Southwest corner Lot 16, Block 1, Mt. Hebron Addition.
318. (#1859) Found 3/4" slick rod on Southerly line Lot 16, Block 1, Mt. Hebron Addition.

319. (#1868) Found Initial Point for Mount Hebron Addition, a 3/4" slick rod in concrete at Northeasterly point of Mt. Hebron Addition.
320. (#1904) Found 1/2" smooth pin, apparent center quarter corner of Section 1, used on Mt. Hebron Second Addition.
321. (#1910) Found Initial Point for Browns Court Addition, a railroad spike, set by City of Pendleton, at centerline of Despain Avenue and Westerly right-of-way of NW 14th Street.
322. (#1710) Found a concrete monument on Westerly line of Brown's Court Addition.
323. (#1711) Found a concrete monument at Northwest corner of Brown's Court Addition.
324. (#1714) Found a concrete monument on West line of Brown's Court Addition.
325. (#1680) Found a 5/8" rebar on West line of Lot 1, Replat of Block A Brown's Court Addition.
326. (#1682) Found a 5/8" rebar at Northeast corner of Lot 6, Replat No. 2 of Block A Brown's Court Addition.
327. (#1681) Found a 5/8" rebar at Southwest corner of Lot 2, Replat No. 2 of Block A Brown's Court Addition.
328. (#1915) Found a 5/8" rebar at Northwest corner Lot 10, Block 2, Cole's Addition.
329. (#1840) Found Initial Point for River View Addition, a 1/2" slick pin, at Northwest corner Lot 4, River View Addition.
330. (#1916) Found hole drilled in concrete retention wall at Southeast corner Lot 1 of River View Addition.
331. (#1924) Found 3/4" slick pin on the Easterly line of Lot 3, River View Addition. This is a common corner with Wade's Addition.
332. (#1839) Found 5/8" rebar at Northeast corner Lot 1, Block 1, Raley's Addition.
333. (#1841) Found 1/2" rebar at Northeast corner of Lot 5, Block 3, Raley's Addition.
334. (#1845) Found lead plug and brass washer "PLS 1106" at Southwest corner of Lot 7, Block 12, Raley's Addition.
335. (#1796) True Southwest corner of Skyline Heights, 0.75 West of position of found "x" in 4"

shaft.

338. (#1982) Found lead plug with brass washer marked "PLS 1106" at Southeast Corner of Block 20, Original Town of Pendleton.

339. (#1980) Found 5/8" rebar at Southeast corner of Block 19, Original Town of Pendleton.

340. (#2012) Found 5/8" rebar at Southeast corner of Block 18, Original Town of Pendleton.

341. (#2013) Found pk nail, set by city, at intersection of centerline of Byers and Main Street, Original Town of Pendleton.

342. (#1978) Found pk nail, set by city, at intersection of centerline of Court and Main, Original Town of Pendleton.

343. (#1979) Found pk nail, set by city, at intersection of centerline of Dorion and Main, Original Town of Pendleton.

344. (#1970) Found 5/8" rebar witness corner which bears N 65°10'54" E (grid bearing), 1.00' from Southeast corner of Block 10, Original Town of Pendleton, set on Survey No. 95-155-B.

345. (#2022) Found 2 1/4" brass cap in monument box, set by city, at intersection of the centerlines of Court and Second.

346. (#2023) Found 2 1/4" brass cap in monument box, set by city, at intersection of the centerlines of Court and Fourth.

347. (#2024) Found 2 1/2" brass cap in monument box, set by city, at intersection of the centerlines of Dorion and Fourth.

348. (#2052) Found pk nail, set by city, at intersection of centerlines of Court and Eleventh. This was set by line projection, by City of Pendleton. I don't believe the City used the proper method in establishing this intersection.

349. (#2050) Found railroad spike, set by city, at intersection of centerline of 17th and Court.

350. (#2007) Found 5/8" rebar (plat monument) at Northwest corner of Lot 1, Gordon's Tracts.

351. (#1985) Found 5/8" rebar (plat monument) at Northeast corner of Lot 7, Gordon's Tracts.

352. (#1975) Found 5/8" rebar, at Northeast corner of Lot 5, Block 4, Subdivision of Block 4 in the Old Town of Pendleton.

353. (#1977) Found 5/8" rebar, at the Northeast corner of Lot 4, Block 4, Subdivision of Block 4 in the Old Town of Pendleton.
354. (#2016) Found railroad spike called on Krumbein Surey for Roden, dated 1975, at intersection of North line of highway and West line of Eighteenth Street, Edgewood Addition.
355. (#2018) Found 1/2" rebar at Northeast corner of Lot 7, Block 2, per survey by Krumbein for Roden, dated 1975, Edgewood Addition.
356. (#2019) Found 2" outside diameter pipe for Northwest 1/16th corner of Section 10.
357. (#2020) Found 1" outside diameter pipe at Northeast corner of Lot 1, Block 1, Edgewood Addition.
358. (#1988) Calculated block corner (no monument found), the Northeast corner of Lot 1 Block 4, Subdivision of Block 4 in the Old Town of Pendleton.
359. (#1986) Calculated point for Southwest corner of LaDow Addition, based on Record Surveys.
360. (#1987) Calculated point for Southeast corner of Lot 5, LaDow Addition, based on Record Surveys.
361. (#1951) Found PK nail at intersection of centerline of 15th Drive and Byers, Byers Park Addition.
362. (#1952) Found PK nail at intersection of centerline of 15th Street and Byers, Byers Park Addition.
363. (#1953) Found 1" outside diameter iron pipe at Southwest Corner of Lot 5, Block 22-does not fit well, Byers Park Addition.
364. (#1954) Found concrete nail and unreadable brass washer at intersection of centerline of 12th Street and Byers, Byers Park Addition.
365. (#1996) Calculated intersection of centerline of 11th and Byers, with reference to lead plugs in curbs reference points found in City monumentation book, Byers Park Addition.
366. (#1955) Found 3/4" smooth pin at Southwest corner of Lot 15, Block 3-does not fit well, Byers Park Addition.
367. (#1967) Found 1" outside diameter iron pipe at Northeast corner Lot 10, Block D, Addition to Jacob's Addition.

368. (#1965) Found 1/2" rebar at Northeast corner of Lot 9, Block C, Addition to Jacob's Addition.

369. (#1960) Found 5/8" rebar, from Knights of Pythias Survey, Dated 1994, on East line of Lot 4, Block B of Jacob's Addition.

370. (#1964) Found 1 1/2" rebar on West line of Lot 1, Block B, Jacob's Addition.

371. (#1997) Calculated point for intersection of centerline of SE Byers on southerly extension of West Line of Lot 1, Block B, Jacob's Addition.

372. (#1995) Found 3/8" drill hole in concrete at Northeast corner of Lot 1, Block I. See Survey No. O-94-A, South Pendleton LaDow's Addition.

373. (#2008) Found 3/8" drill hole in concrete at Southeast corner of Lot 5, Block I. See Survey No. O-94-A, South Pendleton LaDow's Addition.

374. (#2058) Found PK nail by City of Pendleton, at intersection of centerline of Main and Emigrant.

375. (#2070) Calculated Northwest corner of Wade Addition.

376. (#2071) Calculated Northeast corner of Wade Addition.

\2n32subdesc

POINT LIST

Pt. No.	North	East	Elev.	Description	Note No.
1	732162.741	8640927.768	1337.69	5.8ir	
2	720490.3093	8624535.534	1155.56	NWCORSEC29	
3	720606.4047	8629825.03	1355.05	NWCORSEC28	
4	720548.3631	8627180.441	1232.34	N1/4SEC29	
5	720472.1794	8621860.012	1042.62	N1/4SEC30	
6	730882.4383	8618472.82	971.28	50WCNW18	
7	725801.1346	8627044.194	1316.59	N1/4SEC20	
8	730999.3769	8624241.809	1096.11	NWCORSEC17	
9	725711.3638	8621721.455	1300.85	N1/4SEC19	
10	730968.7613	8621589.362	1138.47	N1/4SEC18	
11	728314.5843	8618524.498	1105.92	W1/4SEC18	
12	720450.0033	8618666.343	1192.37	NWCORSEC30	
13	723070.4252	8618641.805	1136.57	W1/4SEC13	
14	725732.3465	8618582.252	988.865	NWCORSEC19WC	
15	725875.0195	8629708.341	1140.62	NWCORSEC21	132
20	736721.281	8642589.252	1081.7	S1/4SEC2	
22	728720.6354	8640173.843	1189.92	E1/4SEC15	
24	731127.3042	8629574.102	1024.6	SWCORSEC9	
25	731167.1321	8632214.062	1132.39	S1/4SEC9	
26	741834.1228	8634534.629	1428.46	NWCORSEC3	
27	725984.4735	8634978.195	1256.22	SWCORSEC15	
29	741986.9874	8642476.234	1454.73	N1/4 SEC2	
30	739392.5175	8645185.468	1309.12	E1/4 SEC 2	
31	742098.834	8647779.846	1410.65	N1/4 SEC 1	
32	739369.986	8639874.849	1399.27	E1/4 SEC3	
33	736851.9564	8650563.405	1118.19	SECORSEC10NL	
34	726246.9943	8648164.599	1348.67	S1/4SEC13	
35	726135.2009	8642881.117	1165.05	S1/4SEC14	
36	731502.3015	8645388.363	1266.32	SWCORSEC12	
37	726216.5692	8645518.213	1319	WCSWCORSEC13	
38	731528.7701	8648027.094	1336.93	S1/4SEC12	
40	742612.4532	8622663.30	1520.86	CPENDAIR	
41	731460.354	8642729.857	1279.42	S1/4SEC11	3
42	739510.0911	8650519.366	1217.96	E1/4SEC10ONLY	
43	726276.4515	8650782.788	1365.24	SESEC13ONLY	
44	726012.5297	8637613.745	1194.55	S1/4SEC15	57
45	728916.7545	8650721.993	1222.14	1/4S13ONLY	
46	731300.3316	8637489.046	1135.33	S1/4SEC10	
48	741732.5288	8629239.831	1325.11	NWCORSEC4	
52	725936.3305	8632323.234	1108.09	S1/4SEC16	
55	723346.3831	8635032.992	1321.74	E1/4SEC21	
56	741484.64	8618283.707	1505	NWSEC6	
57	741607.559	8624011.262	0	NWSEC5	
58	736286.6496	8624193.298	1119.76	NWCORSEC8	
59	736250.4124	8621528.434	1191.53	N1/4SEC7	
60	728513.7728	8629648.952	1050.58	E1/4SEC17	
64	734138.0393	8645314.361	1351.99	W1/4 SEC12	
72	718135.162	8640401.60	1298.55	W1/4SEC26	
73	715508.1482	8640462.378	1286.4	SWCORSEC26	
100	723108.7711	8624457.776	1235.45	W1/4SEC20	
104	726049.349	8640256.752	0	NWCORS23	
109	723241.166	8629766.94	0	E1/4S20	
110	736379.9622	8629453.789	1061.01	NWCORSEC9	
150	715209.7248	8618715.328	1379.31	NWCORS31	

151	709945.1266	8618848.365	1532.22	SWCORS31	
185	738846.1787	8618329.827	1430.18	W1/4SEC6	
187	741553.0877	8621356.334	1400.32	N1/4SEC6	
188	738920.7435	8624103.174	1261.35	E1/4SEC6	
190	720879.2384	8645644.715	1344.01	SECORS23	
191	720842.5771	8642984.837	1292.04	S1/4S23	
192	718244.2595	8645698.30	1431	E1/4S26	
193	712970.9783	8645811.757	1329.94	E1/4S35	
194	720762.4914	8640340.647	1222.86	SWCORS23	
195	715558.5973	8643107.724	1242.88	S1/4S26	
196	723541.2263	8645589.425	1239.53	E1/4S23	
202	723787.4497	8650876.925	1426.18	5/8pincp	
203	734332.195	8650533.504	1214.23	CP PIN	
218	742158.913	8650439.469	0	BCNECORS1	
221	710414.935	8651159.145	0	BCSES36	
226	713073.5676	8651089.218	1415.16	1.4S31S36	
227	715713.0662	8651024.776	1434.26	SCS25ONLY	
228	715758.344	8651023.342	1433.07	SCSEC30ONLY	
229	718353.9087	8650963.773	1389.76	1.4S25ONLY	
230	718439.0825	8650961.905	1387.51	1.4S30ONLY	
231	720994.9765	8650903.568	1335.46	SCS2425ONLY	
232	723636.0807	8650842.888	1423.97	1.4S24	
235	731555.3456	8650665.794	1319.63	sc	
246	710373.8274	8648505.295	1349.1	RRSPIKE	
247	710332.7931	8645871.552	1360.24	SCBC	
250	736335.7176	8626819.602	1077.3	N1/4SEC8	
275	730932.4212	8618471.814	0	SWCORS7	
276	736773.5333	8645240.674	1108.18	SWCORSEC1	
277	736812.522	8647901.909	0	S1/4SEC1	
278	734133.639	8650609.201	0	WC1/4SEC12	
279	734193.6173	8650607.88	0	TRUEE1/4S12	
280	726216.7202	8645525.241	0	TRUESWCORS13	
281	725692.3617	8618583.147	0	NWCORSEC19TR	
282	728659.65	8637551.221	1177.09	C1/4S15	54
283	725727.127	8624379.984	1324.32	SECORS18	
284	715475.782	8637826.873	1168.71	S1/4S27	
285	741935.981	8639829.192	0	NWCORSEC2	
302	736519.0756	8634688.949	0	NWCORSEC10	282
303	736449.6811	8632071.65	0	N1/4SEC9	
355	728858.4084	8645437.895	1160.13	1.4bc	
356	720937.2723	8648273.732	1332.64	1.4bc	
357	715661.0751	8648388.293	1433.77	1.4bc	
358	734095.2405	8640090.043	1067.79	WCBD	
359	731392.3036	8640090.42	1329.67	BCSC	9
400	734035.3151	8640025.998	0	calc1/4	
401	731209.438	8634884.858	0	BCSC	
410	723414.0316	8640309.203	1202.78	1.4BC	
411	739029.8179	8629347.86	1218.22	1.4bc	
412	741670.0005	8626625.364	1482.83	pk	
413	710082.9552	8632664.497	1162.05	1.4BC	
414	710138.3321	8635281.214	1388.04	SCBC	
441	715317.9728	8629945.282	1147.75	SCBC	
442	712780.6743	8635236.543	1315.55	1.4BC	
445	715422.7933	8635191.981	0	bcsc	
495	728363.3618	8624310.879	1260.18	1.4BC	

496	733642.9706	8624217.453	984.4	1.4BC	
497	736226.7276	8618375.506	1397.83	SC	
1106	718905.7905	8621054.81	1373.86	BIRCHCRK	
1107	736207.7305	8618375.837	0	TRUECOR	
1110	741885.0066	8637181.918	1453.15	1/4BC	
1111	742038.7196	8645120.143	1450.33	SCBC	
1120	720739.3496	8637719.671	1358.54	1.4bc	
1121	720704.4603	8635092.584	1355.44	scbc	
1122	715609.0985	8645751.741	1349.53	scbc	
1157	720655.484	8632458.747	1104.31	1.4bc	
1160	710291.417	8643217.536	1320.06	1.4bc	
1175	717962.6396	8629866.654	1285.64	1.4bc	
1176	715370.3575	8632568.659	1379.77	1.4bc	
1177	715264.1283	8627321.87	1195.69	1.4bc	
1178	712672.8004	8629996.37	1178.53	1.4bc	
1179	710027.5548	8630047.76	1337.2	scbc	
1180	712868.0861	8640504.74	1368.02	1.4bc	
1200	709972.5574	8627407.047	1444.73	1.4bc	
1202	728596.6238	8634889.258	0	1/4bc	119
1203	734415.682	8627792.905	1018.45	1/2pinstpcp	
1204	733752.751	8629487.614	1136.5	1/4 5/8pin	
1205	733999.515	8642421.693	1322.09	STAPEND	
1206	737717.556	8636423.937	0	MSPIRE	
1299	728043.619	8631548.697	0	1.5AC	122
1300	733092.543	8643060.895	1350.43	5.8ir	1
1301	733198.652	8642281.107	1281.81	5.8ir	2
1303	731928.989	8641847.335	1340.7	pbplug	12
1304	731898.036	8640649.491	1335.69	5.8ir	11
1305	731890.76	8640553.125	1332.17	5.8ir	10
1306	731359.09	8639162.022	1280.74	5.8ir	8
1307	731323.622	8638147.093	1199.08	ipbc	28
1308	730873.13	8637738.527	1116.75	5.8ir	32
1311	730432.6247	8637829.717	0	5.8rebarypc	63
1312	729455.656	8638088.312	1081.35	5.8ypc636	23
1313	729557.478	8638079.911	1090.77	1.5ackel	64
1314	729716.361	8638319.305	1109.85	2inac	24
1315	729808.42	8638210.198	1107.26	2inac	25
1316	730606.784	8638132.484	1141.34	2inac	62
1317	730117.23	8639075.994	1181.79	2inac	26
1318	729879.58	8639000.551	1185.48	2inac	27
1319	731454.241	8638588.204	1262.25	1.2ir	5
1320	733352.843	8641034.124	1214.46	3inbd	15
1321	732407.335	8640348.055	1272.73	1.2ir	
1322	732924.283	8640108.236	1168.46	5.8ir	16
1323	733457.913	8641569.431	1253.57	5.8ir	14
1324	733105.174	8641661.022	1274.8	5.8ir	13
1325	730738.367	8637851.97	0	5.8ir	31
1326	730804.43	8637963.61	0	5.8ir	30
1327	731107.641	8638202.61	0	5.8ir	29
1331	734093.716	8643027.211	1296.37	5.8ir	7
1332	734631.798	8642745.243	1266.64	rrspike	
1333	733754.489	8640848.363	1142.72	copbc	77
1334	733105.10	8641661.036	1274.84	5.8ir	
1335	732911.047	8641672.911	1298.06	5.8ir	18
1336	732510.241	8640819.468	1308.35	5.8ir	17

1337	731105.36	8640593.416	1336.49	1.5ackel	22
1338	731405.164	8640585.738	1335.27	1.5ackel	21
1340	727623.8381	8640093.481	1199.33	1.5irac	34
1341	727654.943	8640144.78	0	5.8irypc	43
1342	727639.3905	8640119.131	0	2"BC	44
1343	727447.0207	8640235.772	0	2"BC	42
1344	727272.5298	8640341.572	0	2"BC	41
1345	727222.8217	8640356.038	0	2"BC	40
1346	727146.1608	8640357.674	0	2"BC	39
1347	727822.8213	8640993.313	0	5/8IRYPC	49
1348	727812.876	8640530.114	0	5.8IRYPC	48
1349	727662.9282	8640533.334	0	5.8IRYPC	47
1350	727658.4359	8640324.107	0	5.8IRYPC	46
1351	727816.3823	8640693.421	0	5.8IRYPC	51
1352	727123.0532	8641008.246	0	5.8IRYPC	52
1353	726999.0795	8641083.394	0	5.8IRYPC	53
1354	727017.1954	8640360.426	0	5/8IRYPC	50
1355	727767.3393	8639808.488	1169.83	3INB.C	36
1356	727777.8873	8639739.971	1164.28	3INB.C	37
1357	727861.9317	8639492.279	1147.62	3INB.C	38
1358	727682.2808	8640054.972	1193.11	5.8irac	35
1359	727564.2024	8639995.289	1190.5	5.8IR	33
1360	727577.9937	8640191.438	0	5.8IRYPC	45
1361	734242.7445	8642958.007	0	BC	6
1362	726034.4226	8639183.899	0	5.8REBYPC	60
1363	726301.9442	8639150.363	0	5.8REBYPC	59
1364	726232.1538	8638604.745	0	5.8REBYPC	58
1365	727839.8761	8638080.69	0	5.8REBAR	56
1366	728859.408	8638056.659	0	5.8REBYPC	55
1367	739416.7479	8633304.601	0	5.8IRYPC	65
1368	738503.2905	8633329.297	0	5.8IRYPC	66
1369	738500.5882	8633229.345	0	5.8IRYPC	67
1370	737641.5719	8633262.571	0	5.8IRYPC	68
1371	737820.6653	8634094.805	0	5.8IRYPC	69
1372	739440.481	8634413.963	0	5.8IRYPC	70
1373	738174.5406	8639245.061	1228.15	bcbgone	71
1374	739008.8005	8639199.616	1376.48	1.2ir	72
1375	738350.9593	8639254.262	0	5.8irypc	73
1376	738648.97	8639371.903	1286.22	5.8irypc	74
1377	738772.9841	8639434.532	0	5.8irypc	75
1378	739303.6197	8639720.812	1383.83	5.8irypc	84
1379	739114.6457	8639413.081	1377.57	5.8irypc	85
1380	738954.0945	8639402.941	0	5.8irypc	86
1381	738893.2859	8639505.568	1329.19	5.8irypc	87
1382	738021.682	8639458.419	1262.89	5.8ir	88
1383	738019.0021	8639333.442	1222.35	5.8irypc	4
1384	738335.4219	8639441.31	1285.88	5.8irypc	19
1385	738683.9152	8639579.049	1333.49	5.8irypc	90
1386	739193.4566	8639722.119	0	5.8irypc	91
1387	734740.92	8642981.20	0	P.K. NAIL	78
1388	735613.682	8644868.902	0	RB7BC	79
1389	735430.556	8645526.713	0	RB12STONE	80
1390	732732.848	8634731.515	0	RB2BC	76
1391	735739.2498	8646194.648	0	RB13SRONE	81
1392	736663.4061	8645742.321	0	RB14STONE	82

1393	736608.0288	8644159.823	0	RB8BC	83
1394	732899.599	8640053.646	1165.07	bccc	92
1395	732245.677	8639619.976	1291.73	5.8ir	93
1396	732597.438	8639399.856	1262.59	pkbw	95
1397	732591.525	8639386.985	1264.3	5.8ir	96
1398	732579.77	8639361.12	1264.56	5.8ir	94
1399	732466.557	8637015.64	1188.73	1inpip	97
1400	732204.669	8636448.402	1192.08	1.2ir	98
1401	732240.156	8636525.51	1193.59	3.4pip	99
1402	733472.607	8638356.313	1110.12	1.2eyebolt	110
1450	730446.765	8632228.956	1138.58	2.25pip	100
1452	729862.229	8631276.317	1072.63	1.2ir	101
1453	729798.471	8631172.431	1062.5	1.2ir	102
1454	730262.433	8632397.632	1144.95	3.4pip	103
1455	729295.513	8632831.442	1175.82	2.5pip	104
1456	729639.986	8633823.758	1171.55	3.4pip	105
1457	729368.254	8633759.374	1171.81	3.4pipe	106
1459	728992.664	8633280.487	1180.35	3.4pipe	107
1460	728884.018	8633104.203	1179.21	3.4pipe	108
1461	729014.296	8633647.895	1180.27	1.2rebar	109
1467	729011.518	8633196.50	1179.72	3.8rebar	111
1468	730440.0964	8632229.094	0	INITIAL P C	112
1469	728553.5287	8632268.659	0	C1/4BC	113
1470	728351.32	8632142.749	1160.28	2.5inbd	114
1471	728145.748	8632147.059	1153.75	2.5inbd	126
1472	728197.143	8631896.842	1126.61	2.5inbd	127
1473	728544.203	8631717.218	1107.55	2.5bc	123
1474	728471.109	8631939.816	1135.95	1.5bckel	115
1475	729234.756	8632086.371	1122.35	5.8rpcsh	116
1476	729025.596	8631281.062	1050.44	5.8ir	117
1477	728441.604	8631370.577	1053.87	1.5AC	124
1478	727863.302	8631755.536	1079.61	5.8ir	125
1479	728748.043	8632786.941	1173.37	cn	
1480	728714.533	8632717.958	1172.86	old3CN	
1482	728293.245	8633524.156	1165.13	nail	
1483	728221.834	8633491.986	1164.27	ccnail	
1484	728298.432	8632386.596	1160.21	nail	
1485	728502.664	8632383.334	1168.12	cn	
1486	728921.253	8634016.235	1176.7	cn	
1487	728944.569	8633921.349	1174.25	cn	
1488	729666.332	8634572.152	1217.23	cn	
1489	729721.833	8634500.791	1215.25	cn	
1501	728353.672	8632272.638	0	3/4"IROD	118
1502	728799.2376	8632910.066	0	2"BC	128
1503	728778.8123	8632876.999	0	1.5BC	129
1504	729696.8331	8634630.444	0	1.5ACKEL	120
1505	728943.0935	8634058.983	0	1.2REBAR	121
1506	728333.0057	8633548.505	0	5.8REBAR	
1510	729017.012	8635554.234	1291.68	5.8ir	138
1511	729907.222	8635019.534	1180.32	1.2ir	139
1512	728007.918	8630367.977	1050.94	nail	
1513	728111.613	8630307.324	1050.64	cn	
1514	727508.962	8630156.639	1056.08	hub	
1515	727630.946	8630129.474	1055.54	hub	
1516	727026.568	8629680.161	1060.86	5.8wrw	

1517	725922.188	8630440.779	1066.12	5.8ir	133
1518	725095.526	8629725.435	1144.38	5.8wrw	
1519	724991.927	8629873.572	1139.08	5.8wrw	151
1520	725138.285	8629919.787	1133.65	cn	
1521	724311.373	8629993.351	1116.18	1.5ackel	137
1522	728167.582	8630760.304	1049.67	5.8ir	134
1523	726745.049	8631814.426	1073.19	1inpip	135
1524	725947.591	8631274.091	1063.94	3.4pip	136
1530	725202.8606	8629931.515	0	5.8IR	152
1531	728065.6083	8630314.857	0	5.8IR	145
1532	727448.083	8630224.557	0	2" PIPE I.P	146
1533	728008.7396	8629658.92	0	5.8REBAR	141
1534	727143.9197	8629678.958	0	1.2REBAR	140
1535	726706.0886	8629689.112	0	5.8REBAR	142
1536	726514.758	8629693.585	0	5.8REBAR	143
1537	728508.7684	8629647.268	0	5.8REBAR YPC	131
1538	727026.6642	8629681.677	0	CALC I.PNT	130
1539	725199.07	8629723.28	0	2" PIPE	147
1540	724416.539	8629740.591	0	1.2REBAR	148
1541	724427.094	8629879.233	0	5.8REBYPC	149
1542	724438.525	8629908.552	0	1.5ACKEL	150
1543	724202.502	8629973.351	0	5.8REBYPC	153
1579	738507.3793	8637061.582	0	5.8at1"bntpi	207
1580	724114.086	8631246.758	1080.93	5.8irbnt	154
1581	724170.885	8630511.36	1086	5.8ir	155
1584	725485.7861	8631021.33	0	2.5odpipe	156
1585	728485.806	8634175.126	1189.63	0.20'WOF5.8i	
1586	728413.739	8634729.993	1201.03	5.8ir	165
1587	728624.02	8636019.696	1323.21	5.8ir	
1588	727336.962	8636250.496	1307.55	rrspike	158
1589	727003.451	8636452.639	1329.96	rrspike	159
1590	726764.577	8636058.461	1297.82	rrspike	160
1591	728071.62	8636291.794	1285.42	2.5pip	161
1592	728071.52	8636291.859	1285.57	1.2ir	
1593	725609.107	8630733.545	1070.84	cn	301
1594	728485.806	8634175.326	0	5.8rebar	167
1595	726470.638	8635573.608	0	5.8rebar	162
1596	727113.3346	8636633.90	0	5.8rebar	163
1597	726292.033	8635042.912	0	5.8REBAR	20
1598	727177.5511	8635323.966	0	CALCINI.PT.	168
1599	727324.7471	8635566.804	0	CALCNECOR	224
1600	728570.299	8636290.681	1314.47	5.8irbnt	164
1601	726884.509	8635669.963	1286.84	rrspike	169
1602	727044.159	8635608.109	1265.44	5.8ir	170
1603	727049.577	8635534.741	1262.58	1.2irbnt	171
1604	728489.972	8634488.454	1193.1	1.2irbnt	166
1605	727755.894	8635594.678	1241.97	1.5inpip	192
1606	727820.386	8635532.718	1240.87	1.25pipe	193
1607	727807.968	8635604.186	1247.42	1.2ir346	194
1609	733061.4029	8637467.252	0	CALCBLKCOR	
1610	732743.7859	8637614.145	0	CALCBLKCOR	
1630	732739.03	8637329.901	1135.04	5.8wrw	172
1631	732846.816	8637280.025	1123.45	5.8wrw	173
1632	732550.076	8638243.454	1263.4	brasbolt	174
1633	733532.039	8640367.323	1140.28	rrspike	175

1634	738873.2641	8637239.705	0	1"pipebnt	208
1635	738700.8401	8637244.358	0	1"odpipe	209
1636	737931.3034	8637264.898	0	RRSPKGONE	270
1637	737925.2457	8637290.06	0	5/8reb1/16th	210
1638	734463.1044	8635289.592	0	5.8rebarrpc	234
1639	734740.2309	8634696.677	0	5.8REBAC	235
1640	733985.879	8634929.664	1040.94	5.8rebarypc	195
1641	733920.879	8634788.963	1040.2	bw	196
1642	733863.39	8634664.496	1038.87	bw	197
1643	733827.344	8634586.42	1038.8	bw	198
1644	733713.926	8634340.976	1036.52	bw	199
1645	734556.38	8633914.364	1034.56	5.8rebarypc	200
1646	732856.196	8632675.381	1098.49	2inbc	214
1647	732404.697	8631519.911	1200.61	2inbc	215
1648	732911.849	8630554.486	1187.49	1.2ir	216
1649	732911.95	8631401.067	1166.63	2inbc	217
1650	732817.105	8631719.661	1169.05	2inbc	218
1651	733127.671	8632235.83	1106.4	2inbc	219
1653	737865.2145	8635398.083	1193.83	5.8rebarrpc	202
1654	738132.165	8635030.424	1203.81	5.8wrw	203
1655	738130.991	8634999.424	1200.71	5.8wrw	204
1656	738553.28	8634607.851	1168	5.8rebarrpc	205
1657	738058.519	8634627.53	1156.16	5.8ir	206
1658	737805.172	8634509.707	1156.68	5.8ir	221
1659	736880.407	8634533.991	1173.54	5.8ir	222
1660	736504.98	8634144.255	1133.7	3.4slk	281
1661	736822.014	8634182.289	1136.7	2inbc	279
1662	737632.95	8634346.129	1126.83	5.8ir	223
1663	739247.936	8637255.874	1334.5	nailcros	211
1665	738524.245	8637244.04	1272.2	cn94	
1666	738465.066	8637194.15	1275.4	magn10	
1667	738446.02	8637179.019	1276.08	cn54	
1668	738297.339	8637197.872	1263.58	magn12	
1669	738143.015	8637267.451	1245.67	magn14	
1670	737941.985	8637236.654	1223.17	magn152	
1680	736667.775	8636271.624	1123.66	5.8ir	325
1681	736710.878	8636279.748	1125.8	5.8ir	327
1682	736945.174	8636495.207	1163.62	5.8ir	326
1683	738103.467	8638498.007	1282.57	2incopbd	242
1684	738622.38	8638469.79	1317.44	5.8ir	243
1685	738636.085	8638729.435	1334.03	3inbdcop	244
1686	738663.094	8639216.708	1320.03	rrspike	
1688	736211.007	8637019.786	1102.34	3inbdcop	251
1689	736196.822	8636760.253	1099.26	3inbdcop	252
1690	736172.474	8636313.906	1086.16	3inbdcop	253
1691	736207.383	8636240.063	1084.44	3inbdcop	256
1692	736228.585	8636195.145	1083.41	3inbdcop	257
1693	736256.154	8636207.15	1083.36	2inbdcop	254
1694	736015.498	8636739.987	1090.11	bw	
1695	736225.173	8637279.389	1104.27	3incopbd	255
1700	733518.816	8634405.314	1036.13	5.8rebarypc	201
1701	734286.024	8634906.622	1042.43	5.8rpc852	236
1702	734178.0095	8634956.524	1041.44	5.8rpc852	237
1708	736723.386	8634127.605	1133.64	5.8ir	280
1709	739163.029	8634586.857	1164.45	bw75	

1710	737759.021	8635547.704	1211.37	cm	322
1711	737870.659	8635548.937	1223.96	cm	323
1712	737874.817	8635652.873	1248.44	5.8wrs	
1713	737640.873	8635625.009	1209.19	5.8slik	
1714	737586.27	8635660.849	1206.33	cm	324
1717	738687.449	8635865.382	1289.27	1333rpc	
1718	736561.888	8636752.332	1140.36	pk	258
1719	736561.276	8636740.389	1139.8	pk	259
1720	736389.545	8635871.317	1080.16	1.2ir	
1721	735992.218	8636344.565	1075.28	cppk	
1722	736168.492	8636731.203	1098.93	cpnail	
1723	732480.905	8631611.165	1200.67	2inbd	220
1724	731988.596	8633676.573	1207.73	rrspike	260
1725	732062.565	8633516.054	1209.01	rrspike	261
1726	732057.179	8633422.228	1210.6	rrspike	262
1727	732096.189	8633729.114	1194.08	rrspikebnt	264
1728	731984.93	8633641.408	1209.01	5.8rebypc	265
1729	731942.149	8633777.41	1206.16	rrspike	266
1730	731897.501	8633874.328	1204.5	rrspike	267
1731	731909.202	8633879.734	1204.02	rrspike	268
1732	732037.727	8633824.017	1194.72	rrspike	269
1733	736871.9537	8634220.278	0	5.8rebar	229
1734	738897.1514	8638096.89	0	5.8rebarac	246
1735	739730.3369	8637040.454	0	5.8rebar	231
1755	737092.129	8634223.429	1133.71	1.2ir	228
1756	737309.579	8634492.844	1165.73	5.8ir	230
1757	739163.032	8634586.865	1164.42	bw75	
1758	739288.956	8638086.693	1305.52	5.8ir	247
1759	739147.407	8638040.402	1282.43	5.8ir	248
1760	739068.512	8638042.497	1269.1	5.8ir	249
1762	737743.609	8637955.466	1176.46	1.5inpipe	271
1763	738845.979	8636761.799	1332.5	rrspike	263
1764	739653.785	8636746.747	1403.21	5.8ir	232
1765	739752.054	8636970.769	1409.78	cpcn	
1767	738146.782	8639286.628	0	stonegone	275
1768	737744.2427	8639068.215	0	WRW5.8REBAR	181
1769	738393.4431	8636953.094	0	1"PIPE	273
1770	737899.343	8636679.455	1271.89	rrspike	213
1773	738055.695	8635947.685	1281.02	nail	
1774	738041.895	8635947.391	1280.97	nail	
1775	739661.366	8636340.891	1409.98	1.2irME	233
1776	737773.881	8638516.104	1239.55	pk	
1777	737774.153	8638516.076	1239.58	pk	
1778	737873.01	8638480.973	1251.12	3.4inpip	
1779	737872.913	8638481.016	1250.97	strait	
1780	738057.453	8639051.319	1242.42	3.4slik	
1781	738139.252	8639106.091	1253.09	rrspike	
1785	737911.092	8638277.346	1239.89	1inpip	
1786	737471.298	8639563.451	1190.93	3.8ir	179
1787	737458.086	8639323.977	1173.05	3.8ir	178
1788	736704.352	8639365.543	1093.01	3.8ir	184
1789	736709.312	8639365.264	1093.24	rrspike	183
1790	736661.314	8638577.073	1112.64	pk	185
1791	737327.165	8637478.892	1187.04	5.8ir	177
1792	737316.618	8637273.512	1186.82	pk	176

1794	739048.173	8638836.941	0	5.8rebypc485	250
1795	739216.5982	8636357.231	0	Xin4"pin	212
1796	739216.572	8636356.482	0	truepoint	335
1797	737789.9225	8638805.416	0	swcorblk2	278
1806	737757.869	8638777.479	1213.48	pk	
1807	737788.924	8638805.47	1213.16	bw1106	
1808	737791.633	8638855.358	1207.82	bw1106	
1809	737786.909	8638745.539	1219.63	pbplug	
1810	737781.01	8638645.968	1234.01	rrspike	277
1811	737633.226	8636262.595	1238.87	5.8rebarrpc	188
1812	737897.322	8636297.226	1246.65	1.5ackel	
1813	737895.123	8636210.681	1234.72	1.5ackel	
1814	737895.87	8636162.341	1230	concomon	191
1816	736529.178	8636223.629	1110.92	cn	
1817	725482.1395	8630864.68	0	CALCINIPT	302
1821	725741.663	8630846.909	1069.89	5.8ir	303
1822	725734.625	8630858.802	1070.32	5.8ir	304
1823	735819.567	8623249.107	1093.85	2inbd	296
1824	735818.832	8623239.12	1093.85	2inbd	297
1825	735366.74	8623267.289	1083.93	2inbd	298
1826	735395.304	8623659.059	1073.58	2inbd	299
1827	736244.466	8623297.785	1092.1	5.8wrw	300
1831	738177.289	8639036.457	1253.73	pk	288
1832	738205.437	8639066.893	1258.73	pk	289
1833	738296.806	8639115.618	1271.93	pk	290
1834	738321.836	8639114.305	1274.75	pk	291
1835	738374.304	8639088.658	1278.6	pk	292
1836	738392.625	8639035.279	1280.03	pk	293
1837	738389.902	8638985.369	1278.92	pk	294
1838	738375.683	8638773.71	1299.21	1.2ir	295
1839	736638.954	8638808.491	1109.83	5.8rebar	332
1840	736337.215	8638769.568	1099.83	1.2slick	329
1841	736065.424	8638579.53	1086.92	1.2rebar	333
1845	735911.334	8637586.589	1091.73	pb1106	334
1850	737772.295	8646773.614	1101.3	rrspike	284
1851	737724.731	8646838.75	1100.84	rrspike	285
1852	737634.804	8646961.636	1101.19	rrspike	286
1853	737544.918	8647084.54	1101.86	rrspike	287
1854	737431.964	8647238.878	1103.31	pk	306
1855	738456.575	8648799.05	1164.8	3.4ir	307
1856	738351.964	8648579.395	1154.33	3.4ir	315
1857	738361.269	8648575.045	1158.84	3.4ir	316
1858	738138.512	8648152.382	1130.5	3.4ir	317
1859	738205.134	8648246.532	1151.45	3.4ir	318
1860	738140.592	8647874.857	1134.95	3.4pipe	283
1862	738360.129	8647869.997	1212.72	1.2ir	308
1863	738464.959	8647868.085	1227.36	1.2ir	309
1864	738321.74	8647304.913	1205.12	1.2slik	310
1865	738966.674	8647742.247	1208.46	5.8rpc	311
1868	739043.9894	8649372.284	0	3.4slick	319
1869	739072.8247	8647854.619	0	5.8rebar	312
1902	739405.155	8647847.437	1168.82	1.5inkel	
1903	739454.11	8647846.342	1143.52	2inpipe	313
1904	739450.993	8647846.491	1144.84	1.2inslik	320
1910	736531.344	8636192.241	1112.79	rrspike	321

1915	737876.073	8636710.797	0	5.8REBAR	328
1916	736147.4395	8638874.006	0	DRILLHOLE	330
1924	736307.8305	8638876.289	0	3.4SLICKPIN	331
1951	737602.321	8644252.703	1086.37	pk	361
1952	737472.204	8644033.462	1085.75	pk	362
1953	737023.446	8643728.318	1084.56	1inpip	363
1954	736976.219	8643106.343	1081.55	cn/bw	364
1955	737428.982	8642883.511	1078.31	3.4slik	366
1960	737180.404	8641768.43	1078.3	5.8wrw	369
1964	737097.867	8641571.126	1074.06	1.2ir	370
1965	737113.891	8642030.767	1079.79	1.2ir	368
1967	737172.783	8642288.908	1079.18	1inpip	367
1970	736552.42	8640965.955	1073.64	5.8rebwc	344
1975	735852.206	8640143.185	1069.53	5.8wrw	352
1977	735897.571	8640122.187	1069.62	5.8wrw	353
1978	735987.588	8639816.263	1068.59	pknail	342
1979	735615.3202	8639988.257	1069.05	pknail	343
1980	736551.375	8640106.382	1069.73	5.8wrw	339
1982	736660.365	8640342.471	1071.15	bwwrw	338
1985	731316.2518	8636806.745	0	5.8 REBAR	351
1986	736798.8346	8640917.345	0	SCOR1CALC	359
1987	736903.6941	8641144.259	0	SECOR5CALC	360
1988	736042.852	8640055.075	0	CALCCOR	358
1995	735644.2083	8641098.822	0	3/8dhole	372
1996	736967.0409	8642846.393	0	calc	365
1997	736922.8316	8641577.223	0	calc	371
2007	731243.446	8636471.631	1068.83	5.8rebar	350
2008	735417.284	8641203.673	1074.83	3.8hole	373
2012	736442.108	8639870.687	1068.9	1.5ackel	340
2013	736314.324	8639665.214	1069.2	pk	341
2016	734617.497	8635430.903	1047.64	rrspike	354
2018	734882.746	8635423.266	1046.62	1.2ir	355
2019	735231.437	8636049.111	1047.04	2inpip	356
2020	735189.666	8635658.197	1046.67	1inodpip	357
2022	735764.941	8639335.198	1064.39	2.2bccop	345
2023	735546.759	8638863.154	1061.15	2.2bccop	346
2024	735174.399	8639035.298	1060.76	2.2bccop	347
2050	734128.249	8635794.818	1047.57	rrspike	349
2052	734782.325	8637211.157	1053.29	pk	348
2058	735243.096	8640160.243	1070.2	pk	374
2070	736319.6354	8638875.487	0	NWCORWADE	375
2071	736461.8202	8639078.534	0	NECORWADE	376