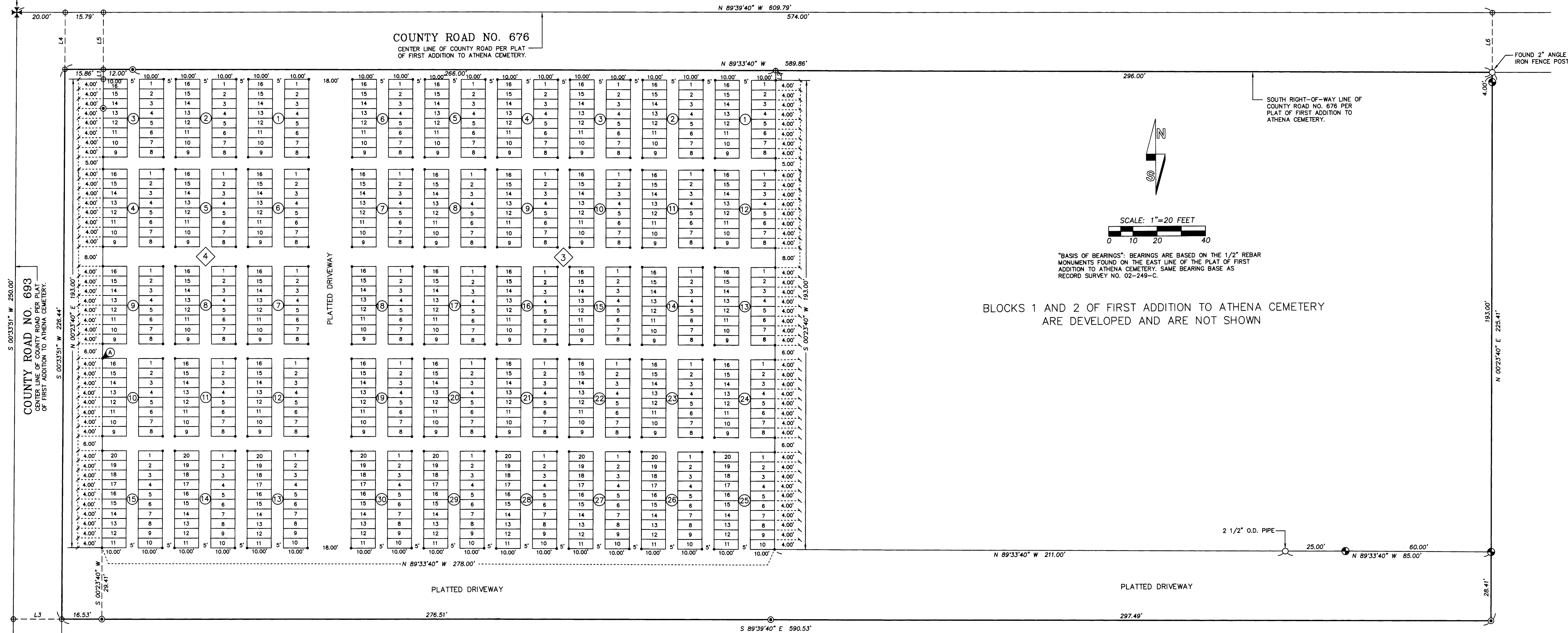


# RECORD OF SURVEY IN FIRST ADDITION TO ATHENA CEMETERY

LOCATED IN THE NE 1/4 OF SECTION 24, R4N., R34E., W.M.,  
UMATILLA COUNTY, OREGON.

LOCATION OF 1/4 CORNER  
BETWEEN SECS. 13 & 24,  
PER PLAT OF FIRST ADDITION  
TO ATHENA CEMETERY. NO  
MONUMENT FOUND.



BLOCKS 1 AND 2 OF FIRST ADDITION TO ATHENA CEMETERY  
ARE DEVELOPED AND ARE NOT SHOWN

"BASIS OF BEARINGS": BEARINGS ARE BASED ON THE 1/2" REBAR  
MONUMENTS FOUND ON THE EAST LINE OF THE PLAT OF FIRST  
ADDITION TO ATHENA CEMETERY. SAME BEARING BASE AS  
RECORD SURVEY NO. 02-249-C.

### NARRATIVE

THIS SURVEY WAS MADE FOR THE CITY OF ATHENA FOR THE PURPOSE OF MONUMENTING SUB-BLOCK BOUNDARIES IN BLOCKS 3 AND 4 OF THE FIRST ADDITION TO ATHENA CEMETERY. THE BOUNDARY OF FIRST ADDITION TO ATHENA CEMETERY WAS DETERMINED PREVIOUSLY BY RECORD SURVEY NO. 02-249-C. REFER TO THAT SURVEY FOR ADDITIONAL INFORMATION AND BOUNDARY CONTROL.

THE SURVEY WAS MADE WITH A 2 PERSON CREW USING A TRIMBLE 5700 GEODETIC GPS SYSTEM OPERATED IN REAL TIME KINEMATIC MODE. MONUMENTS ESTABLISHED ARE NOTED ON THIS RECORD OF SURVEY.

### LEGEND

- - SET 5/8" BY 24" REBAR WITH 1 1/4" YELLOW PLASTIC CAP MARKED "OR PLS 1106, WA PLS 17372".
- ⊙ - FOUND 1/2" REBAR FROM PLAT OF FIRST ADDITION TO ATHENA CEMETERY, UNLESS OTHERWISE NOTED.
- ⊙ - FOUND 5/8" REBAR FROM UMATILLA COUNTY SURVEY NO. 02-249-C.
- - FOUND MONUMENT AS NOTED.
- ⊕ - CALCULATED POINT ONLY, NOT SET OR FOUND.
- 3 - BLOCK NUMBER, PLAT OF FIRST ADDITION TO ATHENA CEMETERY.
- 29 - SUB-BLOCK NUMBER, PLAT OF FIRST ADDITION TO ATHENA CEMETERY.
- 10 - INDICATES LOT NUMBER.
- ⓐ - CORNER MONUMENT FALLS IN CONCRETE OF FENCE POST. SET LEAD PLUG WITH 3/4" BRASS WASHER STAMPED "PLS 1106" NAILED INTO LEAD PLUG.

DIMENSIONS REPORTED ON THIS RECORD OF SURVEY, WHICH ARE COMMON WITH THOSE OF RECORD SURVEY NO. 02-249-C AND THE PLAT OF FIRST ADDITION TO ATHENA CEMETERY, ARE IDENTICAL.

### LINE TABLE

NO.	BEARING	DISTANCE
L1	N 00°23'40" E	4.00'
L2	N 00°23'40" E	4.00'
L3	N 89°39'40" W	20.00'
L4	S 00°33'50" W	23.56'
L5	S 00°23'40" W	23.59'
L6	S 00°23'40" W	24.59'

### NOTE:

ALL GRAVESITE LOTS ARE 4.00 BY 10.00 FEET IN SIZE.  
EAST AND WEST SIDE LINES BEAR N 00°23'40" E AND S 00°23'40" W.  
NORTH AND SOUTH SIDE LINES BEAR N 89°33'40" W AND S 89°33'40" E.

REGISTERED  
PROFESSIONAL  
LAND SURVEYOR  
*William R. Wells*  
OREGON  
JULY 22, 1977  
WILLIAM R. WELLS  
1106

WILLIAM R. WELLS, PLS  
2602 N.E. RIVERSIDE PLACE  
P.O. BOX 1696  
PENDLETON, OREGON  
PHONE: (541) 276-6362  
DATE: 07/04 DR. BY: DMW  
CK. BY: WRW NO: 02-816

PROJECT: /ATHCEM2004  
RECORD OF SURVEY IN FIRST  
ADDITION TO ATHENA CEMETERY  
FOR:  
CITY OF ATHENA  
LOCATED IN THE NE 1/4 OF  
SECTION 24, T4N., R34E., W.M.,  
UMATILLA COUNTY, OREGON.

Umatilla County Surveyor  
Date: 10-04  
Rec'd By: KK

04-173-C