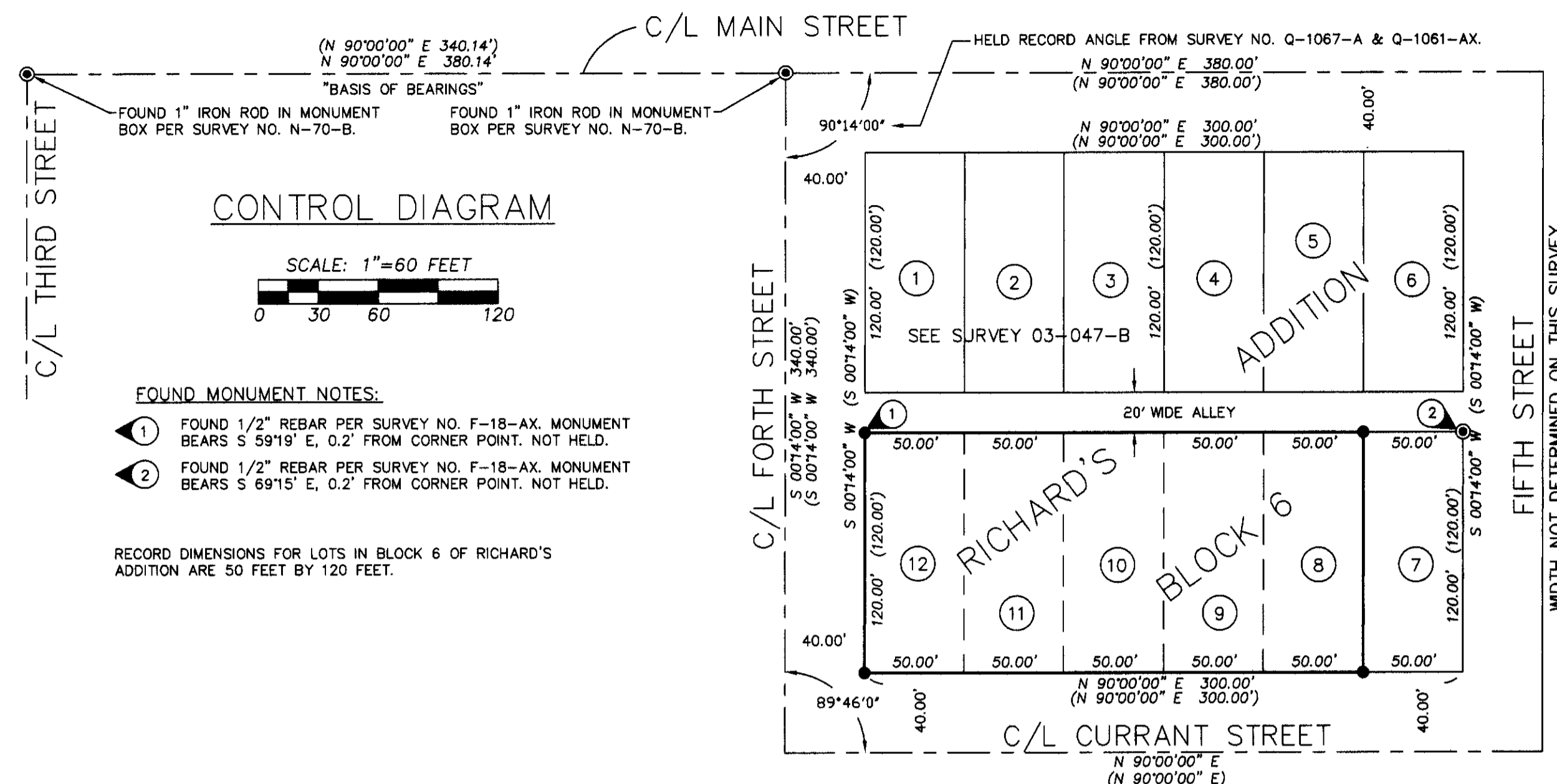


RECORD OF SURVEY



FOUND MONUMENT NOTES:

- ① FOUND 1/2" REBAR PER SURVEY NO. F-18-AX. MONUMENT BEARS S 59°19' E, 0.2' FROM CORNER POINT. NOT HELD.
- ② FOUND 1/2" REBAR PER SURVEY NO. F-18-AX. MONUMENT BEARS S 69°15' E, 0.2' FROM CORNER POINT. NOT HELD.

RECORD DIMENSIONS FOR LOTS IN BLOCK 6 OF RICHARD'S ADDITION ARE 50 FEET BY 120 FEET.

NARRATIVE

THIS SURVEY WAS PERFORMED AT THE REQUEST OF SUNSET HOUSING, INC. THE PURPOSE OF THE SURVEY WAS TO MAKE A TOPOGRAPHIC SURVEY, AND MONUMENT THE FOUR EXTERIOR CORNERS OF THE OVERALL BOUNDARY OF LOTS 8 THROUGH 12, BLOCK 6, RICHARD'S ADDITION, TO THE TOWN, NOW CITY OF ATHENA.

THE BOUNDARY OF BLOCK 6 OF RICHARD'S ADDITION WAS DETERMINED AS SHOWN IN THE CONTROL DIAGRAM, WITH REFERENCE TO SURVEY NO. 03-047-B AND OTHER RECORD SURVEYS. MONUMENTS HELD AND ESTABLISHED ARE NOTED ON THIS RECORD OF SURVEY.

THE SURVEY WAS MADE BY A TWO PERSON CREW USING A SOKKIA SET 5B FIVE SECOND TOTAL STATION BY A COMBINATION OF CLOSED TRAVERSES AND RADIAL TIES. MONUMENTS WERE ESTABLISHED BY RADIAL METHODS AND VERIFIED BY SEPARATE OBSERVATIONS TO DIFFERENT BACK SIGHTS.

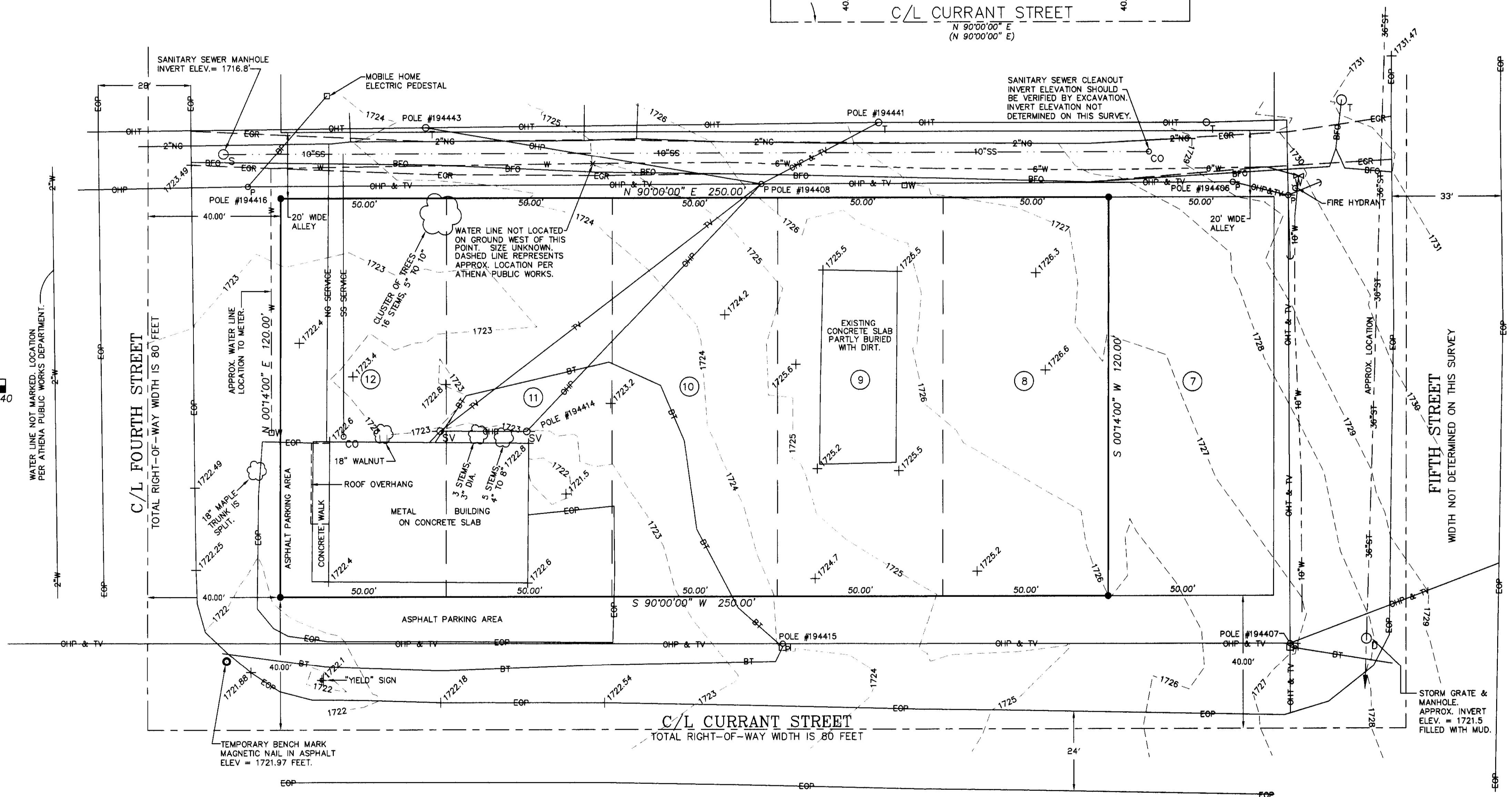
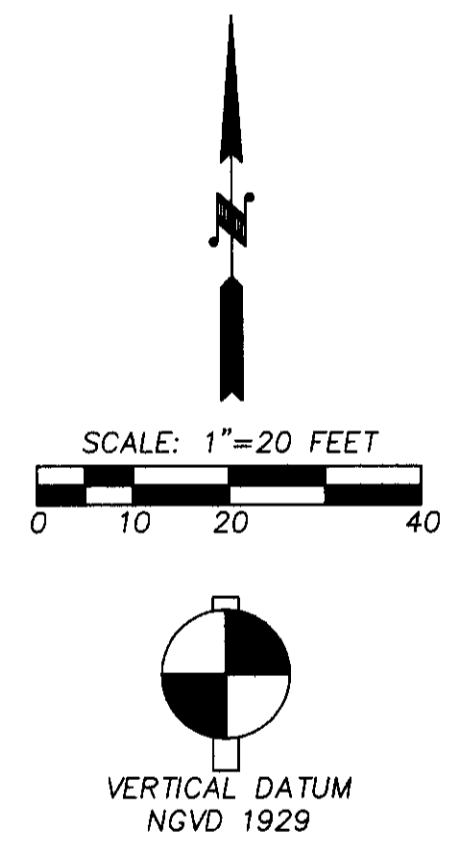
LEGEND

- SET 5/8" X 30" REBAR WITH 1 1/4" YELLOW PLASTIC CAP MARKED "OR PLS 1106 WA PLS 17372."
- ⊙ FOUND MONUMENT AS NOTED.
- (XOX) RECORD DIMENSION PER SURVEY NO. 03-047-B.
- STORM GRATE AND MANHOLE.
- ⊕ FIRE HYDRANT.
- ⊞ WATER METER.
- ⊗ WATER VALVE.
- SANITARY SEWER MANHOLE.
- CO SANITARY SEWER CLEANOUT.
- ⊖ POWER POLE.
- ⊖ SV SERVICE POLE.
- ⊖ POLE ANCHOR.
- ⊖ T TELEPHONE MANHOLE.
- ⊖ □ TELEPHONE PEDESTAL.
- ⊖ ○ TELEPHONE POLE.
- ⊖ ○ DECIDUOUS TREE.
- X 1731.4 INDICATES GROUND SPOT ELEVATION.
- BT — INDICATES BURIED TELEPHONE LINE.
- OHT — INDICATES OVERHEAD TELEPHONE LINE.
- OHP — INDICATES OVERHEAD POWERLINE.
- TV — INDICATES OVERHEAD TELEVISION.
- W — WATER LINE, SIZE INDICATED.
- 10"SS — SANITARY SEWER LINE, SIZE INDICATED.
- 2"NG — NATURAL GAS LINE, SIZE INDICATED.
- BFO — INDICATES BURIED FIBER OPTIC LINE.
- 36"SF — STORM SEWER LINE, SIZE INDICATED.
- EGP — INDICATES EDGE OF GRAVEL ROAD.
- EGP — INDICATES EDGE OF PAVEMENT.
- ① INDICATES LOT NUMBER, BLOCK 6, RICHARD'S ADDITION.

UTILITY NOTES:

1. BURIED UTILITIES WERE LOCATED PER "CALL BEFORE YOU DIG" LOCATE REQUEST. PAINTED LINES BY VARIOUS UTILITY COMPANIES WERE LOCATED BY SURVEY AND ARE SHOWN. CERTAIN WATER LINES WERE NOT LOCATED BY CITY OF ATHENA PUBLIC WORKS AND THEIR LOCATIONS ARE NOTED AS APPROXIMATE. SURVEYOR ACCEPTS NO RESPONSIBILITY FOR LOCATION OR DEPTHS OF BURIED UTILITY LINES. BURIED LINE LOCATIONS SHOULD BE FIELD VERIFIED BY EXCAVATION IF NECESSARY.
2. NATURAL GAS LINE IS A 2" DIAMETER STEEL OPERATED AT 32 PSI PER CASCADE NATURAL GAS, PENDELTON, OREGON.
3. SANITARY SEWER AND WATER LINE PIPE DIAMETERS WERE OBTAINED FROM ATHENA PUBLIC WORKS DEPARTMENT AND WERE NOT VERIFIED IN THE FIELD.
4. THE STORM SEWER IN FIFTH STREET APPEARS TO BE A 36" DIAMETER LINE. THE LINE BEGINS AT FIFTH AND MAIN STREETS AND FLOWS SOUTH, TERMINATING AT WILDHORSE CREEK.
5. THE INVERT ELEVATION AT THE SANITARY SEWER CLEANOUT IN THE ALLEY APPEARS SHALLOW, ONLY ABOUT 30" BELOW GROUND. THE PIPE INVERT ELEVATION SHOULD BE VERIFIED BY EXCAVATION BECAUSE INVERT ELEVATIONS CANNOT BE ACCURATELY MEASURED THROUGH A CLEANOUT.

UTILITY SERVICE PROVIDED BY:
 ELECTRICAL - PACIFIC POWER AND LIGHT.
 CABLE TV - CHARTER COMMUNICATIONS.
 PHONE - QWEST.
 NATURAL GAS - CASCADE NATURAL GAS.
 WATER, SANITARY AND STORM SEWER - CITY OF ATHENA PUBLIC WORKS.



REFERENCE SURVEYS:
 SURVEY NO. L-39, Q-1068-AX, Q-1073-AX, Q-1061-AX, F-18-AX, 03-047-B, N-70-B, 04-170-B.

RECEIVED BY
 Umatilla County Surveyor
 Date: 7-25
 Held by: RK
 No. 05-212-C

REGISTERED PROFESSIONAL LAND SURVEYOR
 WILLIAM R. WELLS
 OREGON
 JULY 22, 1977
 WILLIAM R. WELLS
 1106
 RENEWS 6/30/06

WILLIAM R. WELLS, PLS
 2602 N.E. RIVERSIDE PLACE
 P.O. BOX 1696
 PENDLETON, OREGON
 PHONE: (541) 276-6362

DATE: 11/05 DR. BY: JMW
 CK. BY: WRW NO: 05-1030

PROJECT:
 SURVEY FOR:
 SUNSET HOUSING, INC.
 LOTS 8 THROUGH 12, BLOCK 6,
 RICHARD'S ADDITION, LOCATED
 IN THE S1/2 OF SECTION 19,
 T4N., R35E., W.M.,
 CITY OF ATHENA,
 UMATILLA COUNTY, OREGON.