

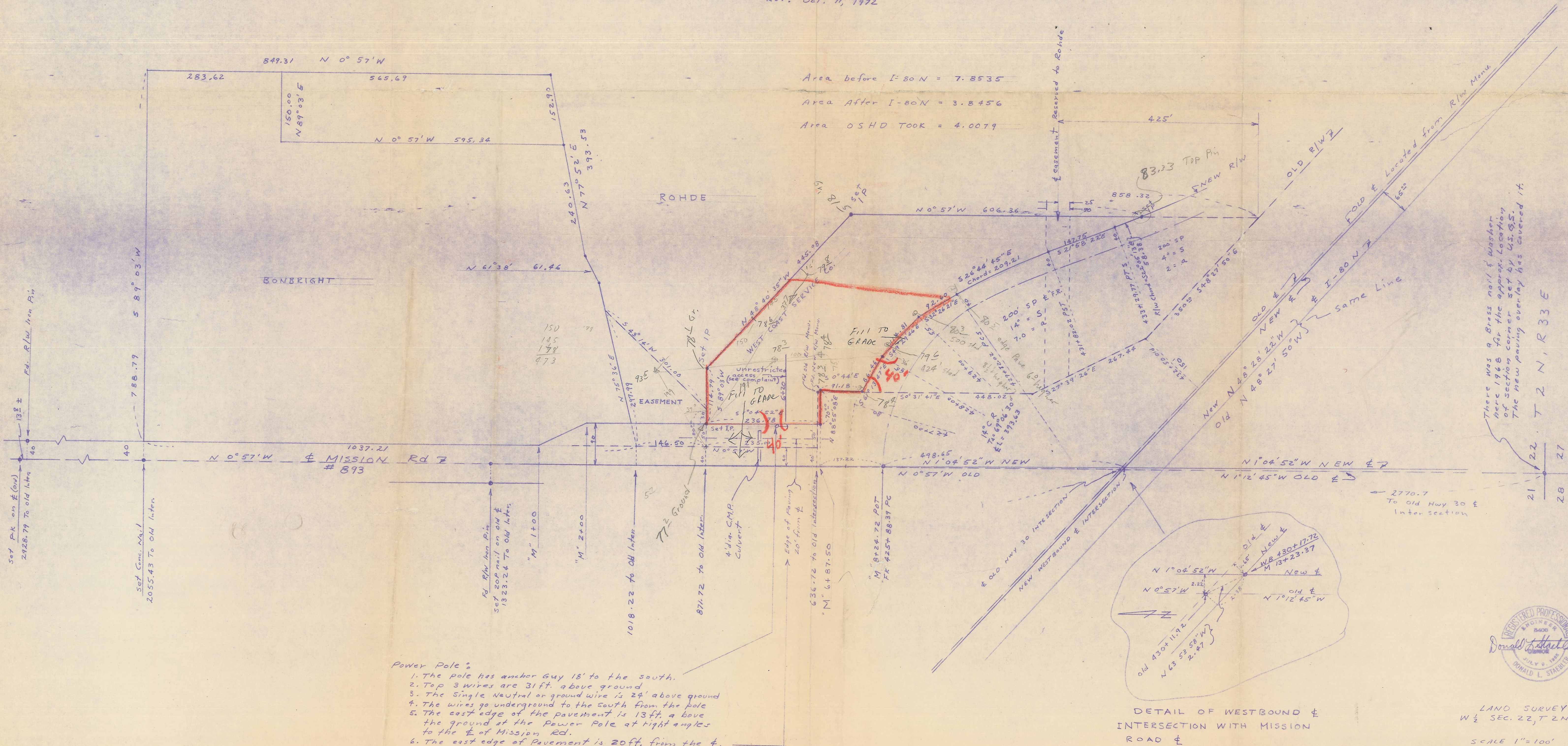
LAND SURVEY IN WEST 1/2 SECTION 22, T2N, R33E.W.M.



SCALE : 1" = 100'

DATE : OCTOBER 6, 1972

REV: Oct. 11, 1972



- Power Pole :**
1. The pole has anchor Guy 18' to the south.
 2. Top 3 wires are 31ft. above ground
 3. The Single Neutral or ground wire is 24' above ground
 4. The wires go underground to the south from the pole
 5. The east edge of the pavement is 13ft. above the ground at the Power Pole at right angles to the E of Mission Rd.
 6. The east edge of Pavement is 20ft. from the E.

There was a Brass nail & Washer here 1968 for the approx. location of section corner set by O.S.S. The new paving overlay has covered it.



DETAIL OF WESTBOUND & INTERSECTION WITH MISSION ROAD &

LAND SURVEY IN
W 1/2 SEC. 22, T2N, R33E
SCALE 1"=100' 10-6-72
DONALD L. STAEBLER
CONSULTING ENGINEER
P.O. BOX 91
PENDLETON, OREGON
06-4492