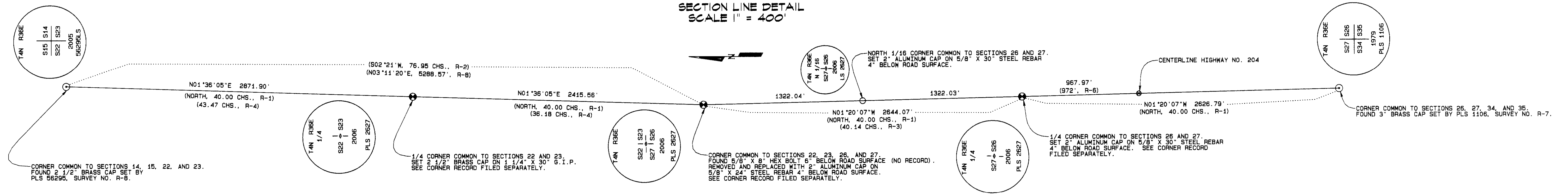
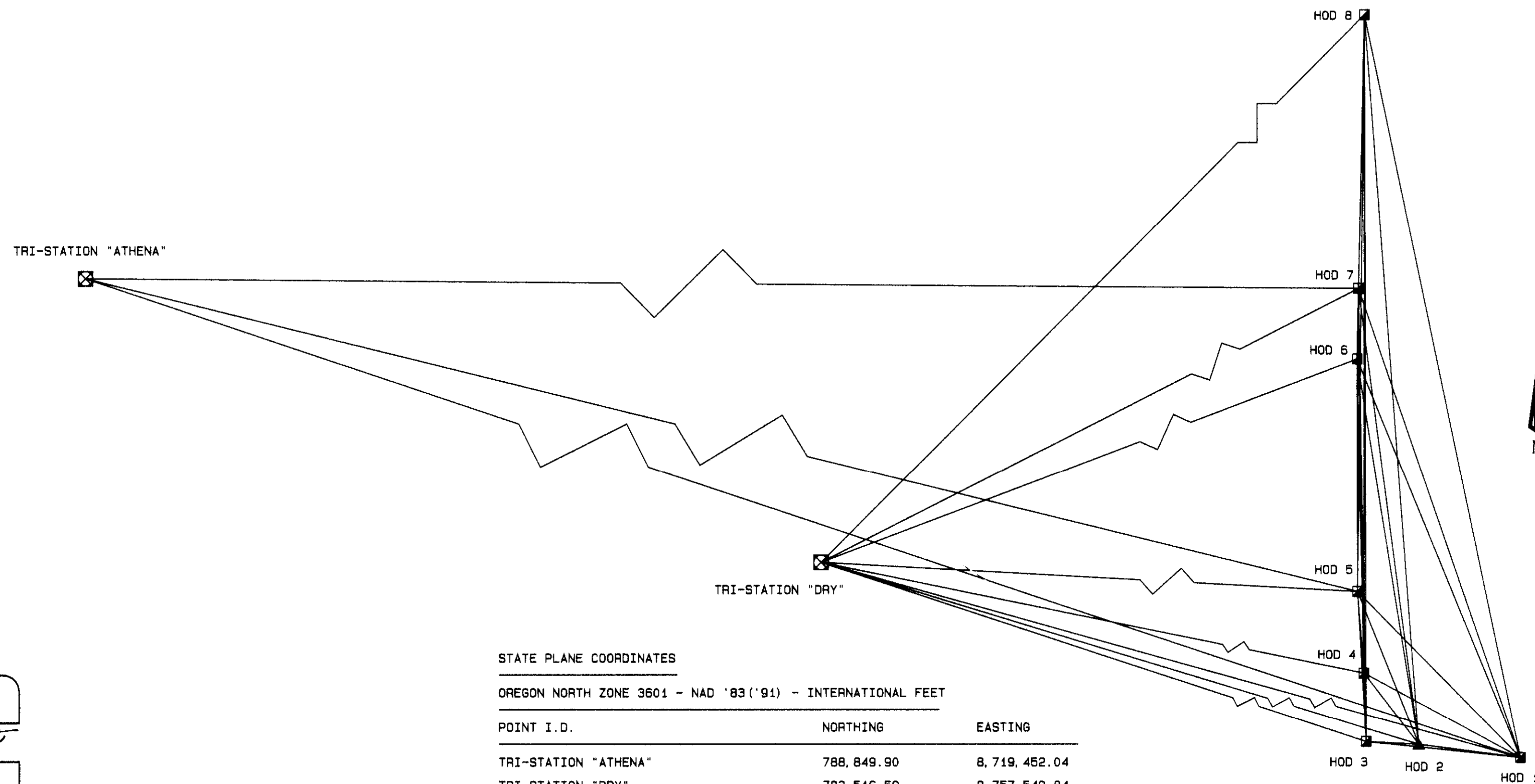


HODGSON ROAD LEGALIZATION/MONUMENTATION SURVEY INDEX SHEET

**SECTION LINE DETAIL
SCALE 1" = 400'**



**CONTROL TRAVERSE
SCALE 1" = 1000'**



INDEX

- SHEET 1 HODGSON ROAD STATION 0+00.00 TO STATION 40+79.68
- SHEET 2 HODGSON ROAD STATION 40+79.68 TO STATION 80+22.42
- SHEET 3 HODGSON ROAD STATION 80+22.42 TO STATION 89+29.18
HIGHWAY 204 STATION 454+23.22 TO STATION 459+24.68
SURVEY NARRATIVE

STATE PLANE COORDINATES

OREGON NORTH ZONE 3601 - NAD '83 ('94) - INTERNATIONAL FEET

POINT I.D.	NORTHING	EASTING
TRI-STATION "ATHENA"	788,848.90	8,719,452.04
TRI-STATION "DRY"	783,616.59	8,767,549.84
HOD 1	782,334.28	8,766,123.37
HOD 2	782,474.78	8,765,070.89
HOD 3	782,504.14	8,764,524.06
HOD 4	783,215.14	8,764,501.95
HOD 5	784,060.54	8,764,435.43
HOD 6	786,466.97	8,764,432.71
HOD 7	787,193.68	8,764,447.73
HOD 8	790,027.65	8,764,515.76
NE COR. SEC. 22	791,381.71	8,764,550.06
N 1/16 COR. SECS. 22/23	789,946.32	8,764,509.93
1/4 COR. SECS. 22/23	788,510.94	8,764,469.80
S 1/16 COR. SECS. 22/23	787,303.63	8,764,436.04
NE COR. SEC. 27	786,096.32	8,764,402.29
N 1/16 COR. SECS. 27/26	784,774.64	8,764,433.09
1/4 COR. SECS. 27/26	783,462.96	8,764,463.90
S 1/16 COR. SECS. 27/26	782,139.92	8,764,494.51
NE COR. SEC. 34	780,826.88	8,764,525.11

REGISTERED PROFESSIONAL LAND SURVEYOR

Gary R. Roberts
GARY R. ROBERTS
2627
RENEWS 12/31/06

SURVEY RECORDS

- R-1 ORIGINAL G.L.O. SURVEY BY WILLIAM ODELL, CONTRACT NO. 114, DATED JULY 2, 1866
- R-2 SURVEY FOR ROAD NO. 87 BY JOHN ARNOLD, COUNTY SURVEYOR, DATED JULY, 1880
- R-3 SURVEY FOR ROAD NO. 108 BY J. H. RALEY, COUNTY SURVEYOR, DATED JULY, 1881
- R-4 SURVEY FOR DAVIDSON, HYATT, WISDOM, AND ASHBY BY W. T. CHALK, COUNTY SURVEYOR, PER JOHN ARNOLD, DEPUTY, DATED MARCH 31, 1885 AND RECORDED IN BOOK 1, RECORD OF PRIVATE SURVEYS, SURVEY NO. B, PAGES 110-111 AND 115 (PLAT)
- R-5 SURVEY FOR ROAD NO. 533 1/2 BY C. E. MACOMBER, COUNTY SURVEYOR, DATED APRIL, 1902
- R-6 OSHD RIGHT-OF-WAY MAP FOR HIGHWAY NO. 204, MAP NO. 68-23-4, DATED MARCH, 1947
- R-7 CORNER CERTIFICATE NO. R-29-R BY BILL WELLS (PLS 1106) DATED DECEMBER, 1979
- R-8 SURVEY NO. 05-198-C BY STEVE HADDOCK (PLS 56295) FOR PAUL PHILLIPS

LEGEND

- ⊗ CALCULATED POINT ONLY - NOTHING FOUND OR SET
- FOUND SECTION MONUMENT AS NOTED
- ⊙ SET SECTION MONUMENT AS NOTED
- ⊠ FOUND TRIANGULATION STATION AS NOTED
- ⚡ SET RAILROAD SPIKE WITH PUNCH MARK STAMPED "LS 2627" FOR GPS CONTROL POINT
- ⊠ SET 5/8" X 30" STEEL REBAR WITH YELLOW PLASTIC CAP MARKED "UCPWD...LS2627" FOR GPS CONTROL POINT
- SET 5/8" X 24" STEEL REBAR WITH 2" ALUMINUM CAP AT 1/16TH CORNER MARKED AS SHOWN

UMATILLA COUNTY ROAD DEPARTMENT
3420 WESTGATE
PENDLETON, OREGON 97801
PHONE 541/276-5424

LEGALIZATION/MONUMENTATION SURVEY
HODGSON ROAD
COUNTY ROAD NO. 637

LOCATED IN SECTIONS 22, 23, 27, AND 26
TOWNSHIP 4 NORTH RANGE 36 E.W.M.

DATE OF SURVEY: MAY THROUGH JULY, 2006

MONUMENTS SET MAY THROUGH JULY, 2006

RECEIVED BY

Umatilla County Surveyor

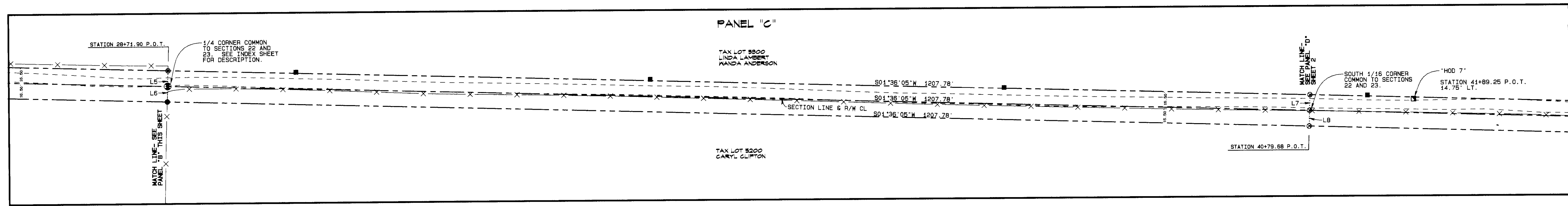
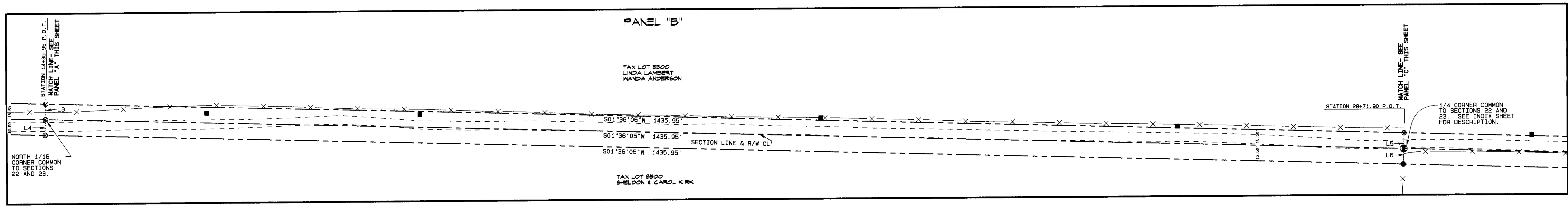
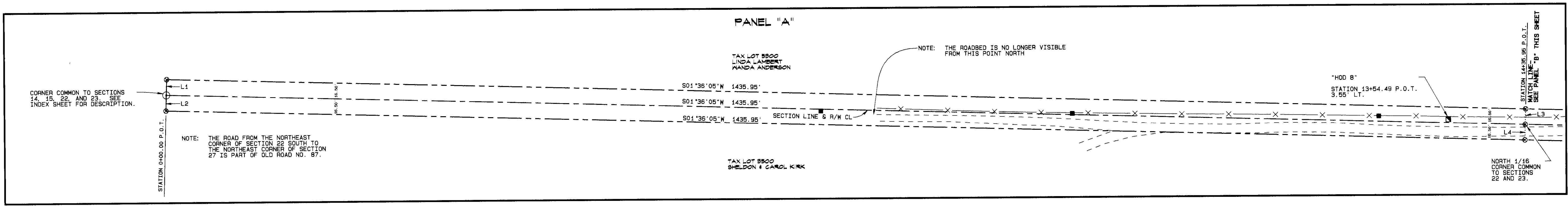
2-06

RR

No. *076-973-C*

INDEX SHEET

HODGSON ROAD LEGALIZATION/MONUMENTATION SURVEY



LINE TABLE

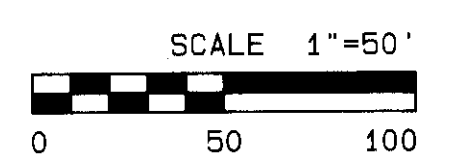
LINE NO.	BEARING	DISTANCE
L1	S88°23'55"E	16.50'
L2	S88°23'55"E	16.50'
L3	S88°23'55"E	16.50'
L4	S88°23'55"E	16.50'
L5	S88°23'55"E	16.50'
L6	S88°23'55"E	16.50'
L7	S88°23'55"E	16.50'
L8	S88°23'55"E	16.50'

REGISTERED PROFESSIONAL LAND SURVEYOR
Gary R. Roberts
 JUL 30, 1988
 GARY R. ROBERTS
 2627
 RENEWS 12/31/06

STATE PLANE COORDINATES

OREGON NORTH ZONE 3601 - INTERNATIONAL FEET

POINT I.D.	NORTHING	EASTING
N. E. CORNER SEC. 22	791,381.71	8,764,550.06
NORTH 1/16 CORNER SECS. 22/23	789,946.32	8,764,509.93
1/4 CORNER SECS. 22/23	789,510.94	8,764,489.80
SOUTH 1/16 CORNER SECS. 22/23	787,303.63	8,764,436.04
"HOD 7"	787,193.68	8,764,447.73
"HOD 8"	790,027.65	8,764,515.76

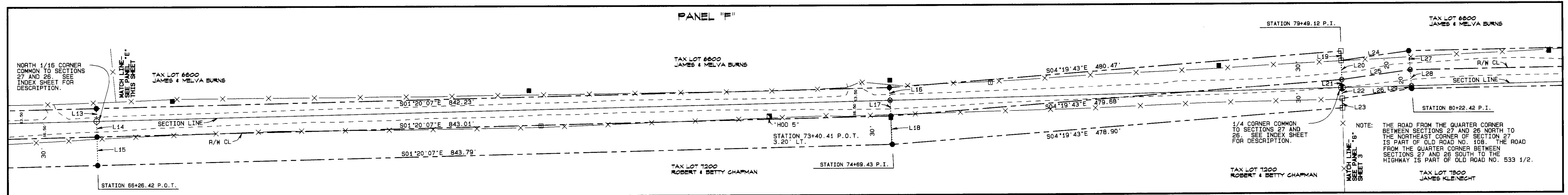
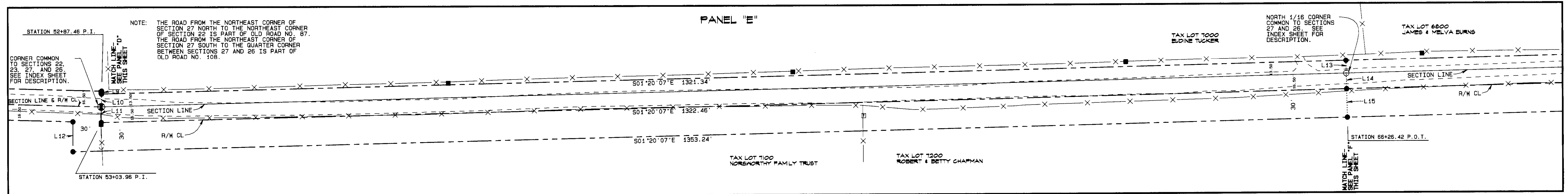
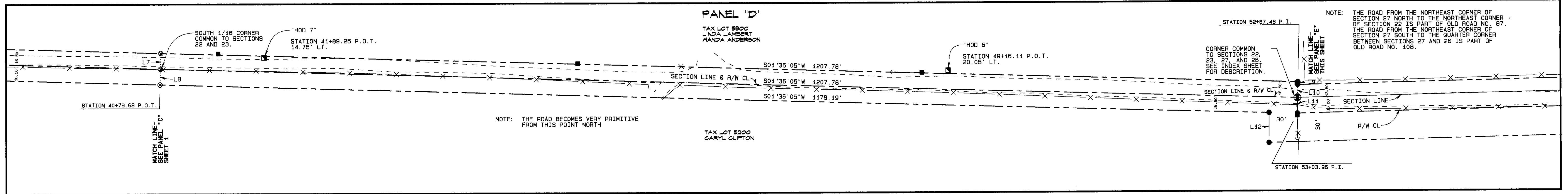


- LEGEND
- ⊙ CALCULATED POINT ONLY - NOTHING FOUND OR SET
 - FOUND SECTION MONUMENT AS NOTED ON INDEX SHEET
 - ⊗ SET SECTION MONUMENT AS NOTED ON INDEX SHEET
 - ⊠ FOUND TRIANGULATION STATION AS NOTED ON INDEX SHEET
 - ▲ SET RAILROAD SPIKE WITH PUNCH MARK STAMPED "LS 2627" FOR GPS CONTROL POINT
 - SET 5/8" X 30" STEEL REBAR WITH YELLOW PLASTIC CAP MARKED "UCPND...LS2627" FOR GPS CONTROL POINT
 - SET 5/8" X 30" STEEL REBAR WITH BLUE PLASTIC CAP MARKED "UCPND...LS2627"
 - SET 5/8" X 24" STEEL REBAR WITH 2" ALUMINUM CAP AT 1/16TH CORNER MARKED AS SHOWN ON INDEX SHEET
 - SET 5/8" X 24" STEEL REBAR WITH BLUE PLASTIC CAP MARKED "UCPND...LS2627"
 - POWER POLE
 - GUY WIRE AND ANCHOR
 - TELEPHONE PEDESTAL
 - CULVERT
 - - - EDGE ROAD
 - FENCE
 - R/W LINE
 - R/W CENTERLINE

UMATILLA COUNTY ROAD DEPARTMENT
 3420 WESTGATE
 PENDLETON, OREGON 97601
 PHONE 341/278-5424
 LEGALIZATION/MONUMENTATION SURVEY
 HODGSON ROAD
 COUNTY ROAD NO. 637
 LOCATED IN SECTIONS 22, 23, 27, AND 26
 TOWNSHIP 4 NORTH RANGE 36 E.W.M.
 DATE OF SURVEY: MAY THROUGH JULY, 2006
 MONUMENTS SET MAY THROUGH JULY, 2006
 SHEET 1 OF 3

RECEIVED BY
 Umatilla County Surveyor
 Date: 7-06
 No. 06-4780

HODGSON ROAD LEGALIZATION/MONUMENTATION SURVEY



LINE TABLE

LINE NO.	BEARING	DISTANCE
L7	S88°23'55"E	16.50'
L8	S88°23'55"E	16.50'
L9	S88°23'55"E	2.98'
L10	S88°23'55"E	13.52'
L11	S89°52'01"E	16.51'
L12	S89°52'01"E	31.55'
L13	N88°39'53"E	13.50'
L14	N88°39'53"E	16.50'
L15	N88°39'53"E	30.00'
L16	N87°10'05"E	13.50'
L17	N87°10'05"E	16.51'
L18	N87°10'05"E	30.01'
L19	N88°39'53"E	9.91'
L20	N88°39'53"E	20.13'
L21	N88°39'53"E	8.55'
L22	N88°39'53"E	11.58'
L23	N88°39'53"E	9.91'
L24	S07°52'39"E	72.21'
L25	S07°52'39"E	73.31'
L26	S07°52'39"E	74.40'
L27	N85°33'26"E	20.04'
L28	N85°33'26"E	16.93'
L29	N85°33'26"E	3.11'

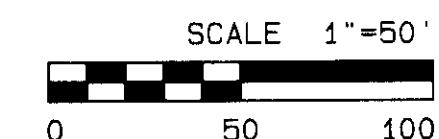
STATE PLANE COORDINATES
OREGON NORTH ZONE 3601 - INTERNATIONAL FEET

POINT I.D.	NORTHING	EASTING
SOUTH 1/16 CORNER SECS. 22/23	787,303.63	8,764,436.04
NE CORNER SEC. 27	786,096.32	8,764,402.29
NORTH 1/16 CORNER SECS. 27/26	784,774.64	8,764,433.09
1/4 CORNER SECS. 27/26	783,452.96	8,764,463.90
"HOD 7"	787,193.68	8,764,447.73
"HOD 5"	786,466.97	8,764,432.71
"HOD 5"	784,060.54	8,764,436.43
STA 53+03.96 P.I. CL	786,096.36	8,764,385.78
STA 66+26.42 P.O.T. CL	784,774.26	8,764,416.60
STA 74+69.43 P.I. CL	783,931.48	8,764,436.24
STA 80+22.42 P.I. CL	783,380.55	8,764,482.49

REGISTERED PROFESSIONAL LAND SURVEYOR
Gary R. Roberts
OREGON JULY 21, 1993
GARY R. ROBERTS 2527
RENEWS 12/31/06

LEGEND

- ⊗ CALCULATED POINT ONLY - NOTHING FOUND OR SET
- ⊙ FOUND SECTION MONUMENT AS NOTED ON INDEX SHEET
- ⊗ SET SECTION MONUMENT AS NOTED ON INDEX SHEET
- ⊙ FOUND TRIANGULATION STATION AS NOTED ON INDEX SHEET
- ▲ SET RAILROAD SPIKE WITH PUNCH MARK STAMPED "LS 2627" FOR GPS CONTROL POINT
- SET 5/8" X 30" STEEL REBAR WITH YELLOW PLASTIC CAP MARKED "UCPWD...LS2627" FOR GPS CONTROL POINT
- SET 5/8" X 30" STEEL REBAR WITH BLUE PLASTIC CAP MARKED "UCPWD...LS2627"
- SET 5/8" X 24" STEEL REBAR WITH 2" ALUMINUM CAP AT 1/16TH CORNER MARKED AS SHOWN ON INDEX SHEET
- SET 5/8" X 24" STEEL REBAR WITH BLUE PLASTIC CAP MARKED "UCPWD...LS2627"
- POWER POLE
- GUY WIRE AND ANCHOR
- TELEPHONE PEDESTAL
- CULVERT
- - - EDGE ROAD
- - - FENCE
- - - R/W LINE
- - - R/W CENTERLINE



RECEIVED BY
[Signature]
Umatilla County Surveyor

UMATILLA COUNTY ROAD DEPARTMENT
3420 WESTGATE
PENDLETON, OREGON 97001
PHONE 541/276-5424

LEGALIZATION/MONUMENTATION SURVEY
HODGSON ROAD
COUNTY ROAD NO. 637

LOCATED IN SECTIONS 22, 23, 27, AND 26
TOWNSHIP 4 NORTH RANGE 36 E.W.M.

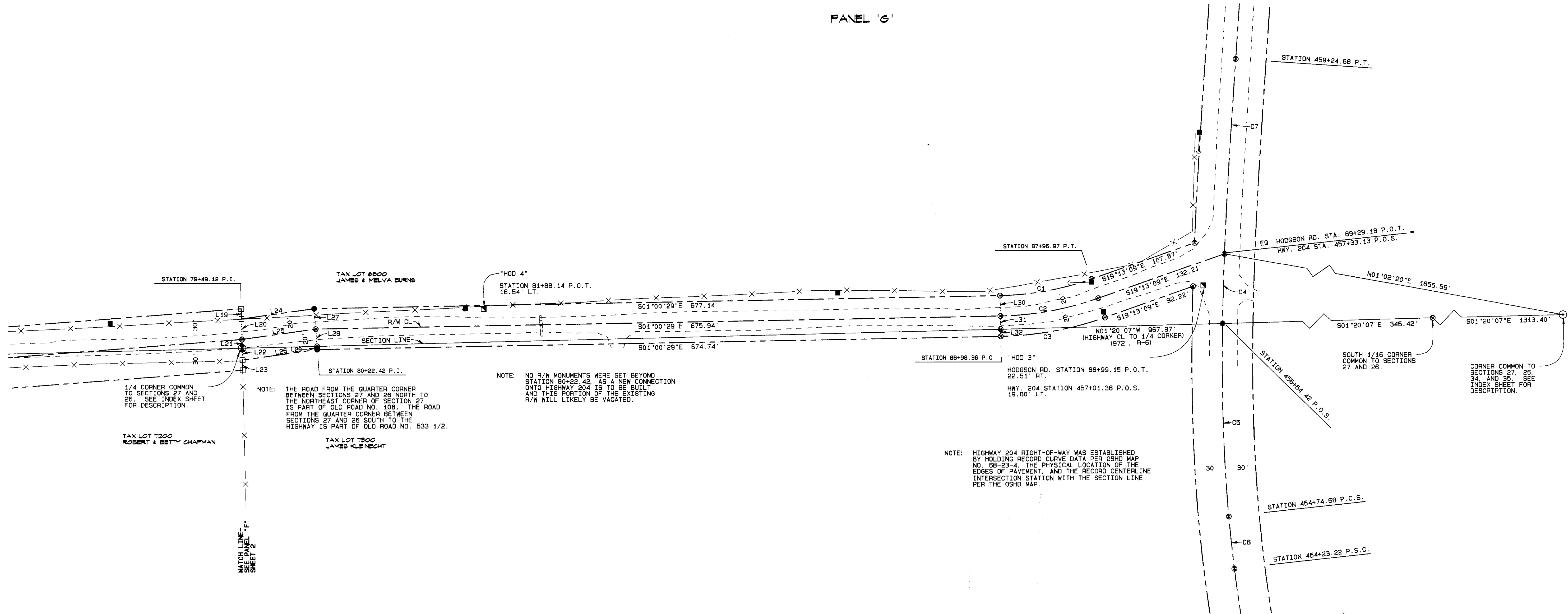
DATE OF SURVEY: MAY THROUGH JULY, 2006

MONUMENTS SET MAY THROUGH JULY, 2006

SHEET 2 OF 3

HODGSON ROAD LEGALIZATION/MONUMENTATION SURVEY

PANEL "G"



NOTE: THE ROAD FROM THE QUARTER CORNER BETWEEN SECTIONS 27 AND 26 NORTH TO THE NORTHEAST CORNER OF SECTION 27 IS PART OF OLD ROAD NO. 108. THE ROAD FROM THE QUARTER CORNER BETWEEN SECTIONS 27 AND 26 SOUTH TO THE HIGHWAY IS PART OF OLD ROAD NO. 533 1/2.

NOTE: NO R/W MONUMENTS WERE SET BEYOND STATION 80+22.42, AS A NEW CONNECTION ONTO HIGHWAY 204 IS TO BE BUILT AND THIS PORTION OF THE EXISTING R/W WILL LIKELY BE VACATED.

NOTE: HIGHWAY 204 RIGHT-OF-WAY WAS ESTABLISHED BY HODGSON RECORD CURVE DATA PER OSDH MAP NO. 88-23-A. THE PHYSICAL LOCATION OF THE EDGES OF PAVEMENT, AND THE RECORD CENTERLINE INTERSECTION STATION WITH THE SECTION LINE PER THE OSDH MAP.

SURVEY NARRATIVE

THE PURPOSE OF THIS SURVEY WAS TO DETERMINE THE PHYSICAL LOCATION OF HODGSON ROAD (COUNTY ROAD NO. 637) AND COMPARE IT TO THE RECORD LOCATION. THE NORTHERLY 1.4 MILES OF THE ROAD FALLS WITHIN THE RECORD RIGHT-OF-WAY. THE REMAINDER OF THE ROAD WILL NEED TO BE LEGALIZED. THE PLAN IS TO ACQUIRE AN EASEMENT FROM JIM AND MELVA BURNS AND RECONSTRUCT A PORTION OF THE ROAD IN ORDER TO MOVE THE CONNECTION ONTO HIGHWAY 204 FARTHER EAST TO A SAFER LOCATION.

THE ROAD IS COMPRISED OF THREE DIFFERENT OLD COUNTY ROADS. THE ORIGINAL ROAD, COUNTY ROAD NO. 87, WAS ESTABLISHED IN JANUARY, 1881 (SURVEYED IN JULY, 1880). IT RAN FROM THE NORTHEAST CORNER OF SECTION 22 SOUTH ON THE LINE BETWEEN SECTIONS 22 AND 23 TO THE SOUTHWEST CORNER OF SECTION 22 AND SOUTH ON THE LINE BETWEEN SECTIONS 27 AND 26 TO THE WESTON AND SUMMERVILLE ROAD NEAR PRESENT-DAY HIGHWAY 204. THE WIDTH OF THE ROAD WAS ESTABLISHED AT 33 FEET. SHORTLY THEREAFTER, IN JULY, 1891, PETER DEARDORFF PETITIONED THE COUNTY TO MOVE THE ROAD ONE ROD WEST FROM THE NORTHEAST CORNER OF SECTION 27 TO THE EAST 1/4 CORNER OF SECTION 27. THOUGH HE OWNED THE LAND ON BOTH SIDES OF THE SECTION LINE, THE PETITION WAS GRANTED IN JANUARY, 1892, THOUGH NO WIDTH WAS STATED IN THE COURT ORDER OR THE PETITION. THE ROAD WAS ASSIGNED NO. 108. THIS PORTION OF THE ROAD WAS MONUMENTED AT A WIDTH OF 60 FEET IN THIS SURVEY. IN JANUARY, 1902, A PETITION WAS RECEIVED BY THE COUNTY TO ESTABLISH A ROAD RUNNING FROM THE EAST 1/4 CORNER OF SECTION 27 SOUTHERLY TO THE WESTON AND SUMMERVILLE ROAD. THE PETITION WAS GRANTED IN JULY, 1902. THE ROAD WAS NUMBERED 533 1/2 AND ESTABLISHED AT A WIDTH OF 40 FEET AS PER THE PETITION. THE ROAD WAS MONUMENTED AT A WIDTH OF 40 FEET IN THIS SURVEY.

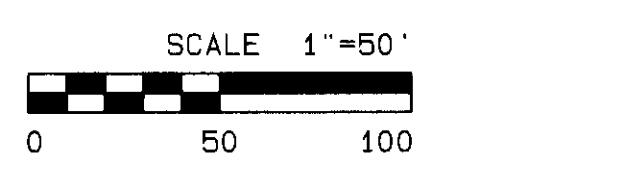
SEVERAL CORNERS WERE VISITED OR SET IN THE PROCESS OF SURVEYING THE ROAD. SOME OF THE OLD G.L.O., ROAD, AND PRIVATE SURVEYS DO NOT AGREE WITH EACH OTHER. SEE THE G.L.O. CORNER SUMMARY AT RIGHT.

THIS SURVEY WAS PERFORMED USING A SOKKIA RADIANT G.P.S. SYSTEM OPERATED IN BOTH STATIC AND RTK MODES. A STATIC NETWORK WAS ESTABLISHED AS SHOWN ON THE INDEX PAGE AND TOPOGRAPHY AND MONUMENTATION WAS DONE USING RTK. THE CONTROL NETWORK WAS CONSTRAINED TO NAD 83(91) PUBLISHED COORDINATES FOR THIRD-ORDER TRI-STATION "DRY" AND B-ORDER TRI-STATION "ATHENA". A MEASUREMENT WAS MADE FROM "ATHENA" TO "DRY", AND HOLDING THE PUBLISHED COORDINATES ON "ATHENA" SHOWN THOSE PUBLISHED FOR "DRY" TO BE WITHIN 0.26 FOOT OF THOSE MEASURED.

BEARINGS AND DISTANCES SHOWN ARE NAD 83(91) GRID. TO OBTAIN APPROXIMATE GROUND DISTANCES, DIVIDE THOSE SHOWN BY A COMBINED SCALE AND ELEVATION FACTOR OF 0.999805184. ROTATE BEARINGS SHOWN 01°33'50" CLOCKWISE (THE CONVERGENCE ANGLE AT THE NORTHEAST CORNER OF SECTION 27) TO OBTAIN AN APPROXIMATION OF TRUE BEARINGS.

LINE TABLE

LINE NO.	BEARING	DISTANCE
L19	N88°39'53"E	9.91'
L20	N88°39'53"E	20.13'
L21	N88°39'53"E	8.55'
L22	N88°39'53"E	11.58'
L23	N88°39'53"E	9.91'
L24	S07°52'39"E	72.21'
L25	S07°52'39"E	73.31'
L26	S07°52'39"E	74.40'
L27	N85°33'26"E	20.04'
L28	N85°33'26"E	16.93'
L29	N85°33'26"E	3.11'
L30	N88°59'31"E	20.00'
L31	N88°59'31"E	13.04'
L32	N88°59'31"E	6.96'



SPIRAL DATA (RECORD, R-6, AND MEASURED)

LENGTH = 450'

S = 9'00"

a = 0.889

SPIRAL CHORD BEARINGS AND DISTANCES

CURVE SEGMENT	CHORD BEARING	CHORD DISTANCES
C4	S88°17'36"E	68.72'
C5	N88°15'13"E	189.65'
C6	S86°33'05"E	191.53'

STATE PLANE COORDINATES

OREGON NORTH ZONE 3601 - INTERNATIONAL FEET

POINT I.D.	NORTHING	EASTING
1/4 CORNER SECS. 27/26	783,452.96	8,764,463.90
SOUTH 1/16 CORNER SECS. 27/26	782,139.92	8,764,494.51
NE CORNER SEC. 34	780,826.88	8,764,525.11
"HOD 4"	783,215.14	8,764,501.95
"HOD 3"	782,504.14	8,764,524.01
"HOD 2" (OFF OF PAGE)	782,474.78	8,765,070.89
"HOD 1" (OFF OF PAGE)	782,334.28	8,765,123.37
STA 80+22.42 P.I. CL	783,380.55	8,764,482.49
STA 86+98.36 P.C. CL	782,704.71	8,764,494.39
STA 87+96.97 P.T. CL	782,608.04	8,764,511.63
STA 454+23.22 P.S.C. CL	782,474.06	8,764,245.73
STA 454+74.68 P.C.S. CL	782,479.47	8,764,296.90
STA 456+64.42 P.O.S. CL	782,485.25	8,764,486.46
STA 457+33.13 P.O.S. CL	782,483.20	8,764,555.15
STA 459+24.68 P.T. CL	782,471.68	8,764,746.34

CURVE TABLE

CURVE NO.	DELTA	RADIUS	ARC LENGTH	CHORD BEARING	CHORD LENGTH
C1	18°12'40"	290.24'	92.25'	S10°06'49"E	91.87'
C2	18°12'40"	310.24'	98.61'	S10°06'49"E	98.20'
C3	18°12'40"	330.24'	104.97'	S10°06'49"E	104.53'
C6	00°00'21"	1432.39'	51.46'	N83°57'47"E	51.46'

G.L.O. CORNER SUMMARY

ORIGINAL G.L.O. SURVEY BY WILLIAM ODELL, DATED 1866

ODELL SET A POST WITH FOUR B.T. REFERENCES AT THE NORTHEAST CORNER OF SECTION 34. AT A POINT NORTH, 40.00 CHAINS HE SET A POST WITH TWO B.T. REFERENCES FOR THE 1/4 CORNER BETWEEN SECTIONS 27 AND 26. AT A POINT NORTH, 40.00 CHAINS FARTHER NORTH HE SET A POST WITH FOUR B.T. REFERENCES FOR THE NORTHEAST CORNER OF SECTION 27. AT A POINT 40.00 CHAINS FARTHER NORTH HE SET A POST FOR THE 1/4 CORNER BETWEEN SECTIONS 22 AND 23 WITH ONE B.T. REFERENCE 362 LKS. SOUTH, DUG PITS, AND RAISED MOUND. AT A POINT 40.00 CHAINS FARTHER NORTH, HE SET A POST FOR THE NORTHEAST CORNER OF SECTION 22 AND RAISED A STONE MOUND.

LINE BETWEEN SECTIONS 22 AND 23

IN 1880, JOHN ARNOLD, COUNTY SURVEYOR, SURVEYED ROAD NO. 87. HE BEGAN AT THE NORTHEAST CORNER OF SECTION 22 AND RAN S02°21'N FOR 76.95 CHAINS TO THE NORTHEAST CORNER OF SECTION 27 WITH NO MENTION OF THE 1/4 CORNER. IN 1885, W. T. CHALK, COUNTY SURVEYOR, WITH JOHN ARNOLD AS HIS DEPUTY, BEGINS AT THE NORTHEAST CORNER OF SECTION 27, WHICH HE REFERS TO AS A STONE WITH NOTCHES (WITNESS TREES ARE ALL STILL INTACT); RUNS NORTH 32.42 CHAINS AND FINDS THE ORIGINAL WITNESS TREE STUMP WITH THE LETTERS "BT" SCRIBED IN BLAZE; RUNS NORTH TO 40.00 CHAINS AND DOES NOT FIND THE ORIGINAL 1/4 CORNER; RUNS NORTH TO 80.00 CHAINS AND DOES NOT FIND THE ORIGINAL CORNER; RUNS NORTH TO 120.00 CHAINS AND DOES NOT FIND THE ORIGINAL 1/4 CORNER; AND RUNS NORTH TO 166.60 CHAINS AND INTERSECTS EAST AND WEST LINE 105 LINKS WEST OF THE GOVERNMENT POST MARKING THE NORTHEAST CORNER OF SECTION 15 WHICH HE REPLACES WITH A NOTCHED STONE AND RAISED A STONE MOUND. HE THEN ADOPTS THE PROPORTION 160 CHS. / 166.60 CHS. RETURNS TO THE BEARING TREE STUMP REFERENCING THE 1/4 CORNER BETWEEN SECTION 22 AND 23, AND SETS A STONE FOR THE 1/4 CORNER AT THE PROPORTIONED DISTANCE OF 377 LKS. NORTH OF THE STUMP. HE NOTES THAT THE CORNER THUS SET IS IN HARMONY WITH FENCING LINES. HE ALSO SETS A STONE AT THE NORTHEAST CORNER OF SECTION 22. THE 1/4 CORNER IS AT A DISTANCE OF 36.18 CHAINS NORTH OF THE SOUTHWEST CORNER OF SECTION 22 AND THE NORTHEAST CORNER OF SECTION 22 IS AT A DISTANCE OF 43.47 CHAINS NORTH OF THE 1/4 CORNER. IN 2006, STEVE HADDOCK FINDS THE REMAINS OF A ROTTEN POST IN A SMALL COLLAR OF STONE AT A 3-WAY FENCE INTERSECTION AT THE NORTHEAST CORNER OF SECTION 22. HE REMONUMENTS IT WITH A 2-1/2" BRASS CAP. ONE OF HIS REFERENCES IS A LARGE STONE LYING ABOVE GROUND, WHICH CHALK REFERRED TO IN HIS SURVEY, BUT NEGLECTED TO GIVE A BEARING AND DISTANCE TO. HADDOCK ALSO FINDS A 5/8" BOLT AT THE SOUTHWEST CORNER OF SECTION 22 WHICH IS IN HARMONY WITH A FENCE LINE AND THE ROAD AND WHICH MEASURES REASONABLY TO THE SECTION CORNER ONE MILE TO THE EAST. I ACCEPTED THE HADDOCK BRASS CAP AND THE BOLT AT THE NORTHEAST AND SOUTHWEST CORNERS OF SECTION 22. I REMOVED THE BOLT AND REPLACED IT WITH A 2-1/2" BRASS CAP. AT A POINT 2415.56 FEET NORTH OF THE SOUTHWEST CORNER OF SECTION 22 IS A LONG-STANDING EAST-WEST FENCE THAT I ACCEPT AS THE BEST EVIDENCE OF THE ORIGINAL CORNER FOR LATITUDE. I HOLD THE LINE BETWEEN THE MONUMENTS AT THE NORTHEAST CORNER OF SECTION 22 AND THE NORTHEAST AND SOUTHWEST CORNERS OF SECTION 27 FOR LONGITUDE. THE RESULTING DISTANCES BETWEEN MONUMENTS COMPARE FAVORABLY WITH THOSE OF THE 1885 CHALK SURVEY. NEITHER OF THE STONES SET BY CHALK WERE FOUND IN THIS SURVEY.

LINE BETWEEN SECTIONS 27 AND 26

IN 1881 J. H. RALEY, COUNTY SURVEYOR, IN A SURVEY FOR ROAD NO. 108, FOUND THE DISTANCE BETWEEN THE NORTHEAST CORNER OF SECTION 27 AND THE EAST 1/4 CORNER OF SECTION 27 TO BE 40.14 CHAINS. IN 1979, BILL MULLS SET A 3" BRASS CAP AT THE SOUTHWEST CORNER OF SECTION 27 BASED ON REMAINING ORIGINAL EVIDENCE (BEARING TREE STUMPS). I FOUND A 5/8" BOLT AND REPLACED IT AS PREVIOUSLY MENTIONED WITH A BRASS CAP AT THE NORTHEAST CORNER OF SECTION 27. AT A POINT 2626.79 FEET NORTH OF THE MULLS MONUMENT IS A LONG-STANDING EAST-WEST FENCE WHICH IS IN THE PROCESS OF BEING REPLACED AND I ACCEPT AS THE BEST EVIDENCE OF THE LATITUDE OF THE ORIGINAL CORNER. I HOLD THE LINE BETWEEN THE MONUMENTS AT THE NORTHEAST AND SOUTHWEST CORNERS OF SECTION 27 FOR LONGITUDE. THE RESULTING DISTANCES BETWEEN MONUMENTS COMPARE FAVORABLY WITH THE RALEY SURVEY AND THE ORIGINAL ODELL SURVEY.

- LEGEND
- ⊗ CALCULATED POINT ONLY - NOTHING FOUND OR SET
 - FOUND SECTION MONUMENT AS NOTED ON INDEX SHEET
 - ⊙ SET SECTION MONUMENT AS NOTED ON INDEX SHEET
 - ⊕ FOUND TRIANGULATION STATION AS NOTED ON INDEX SHEET
 - ▲ SET RAILROAD SPIKE WITH PUNCH MARK STAMPED "LS 2627" FOR GPS CONTROL POINT
 - SET 5/8" X 30" STEEL REBAR WITH YELLOW PLASTIC CAP MARKED "UCPMD...LS2627" FOR GPS CONTROL POINT
 - SET 5/8" X 30" STEEL REBAR WITH BLUE PLASTIC CAP MARKED "UCPMD...LS2627"
 - SET 5/8" X 24" STEEL REBAR WITH 2" ALUMINUM CAP AT 1/16TH CORNER MARKED AS SHOWN ON INDEX SHEET
 - SET 5/8" X 24" STEEL REBAR WITH BLUE PLASTIC CAP MARKED "UCPMD...LS2627"
 - POWER POLE
 - GUY WIRE AND ANCHOR
 - ⊠ TELEPHONE PEDESTAL
 - ⊞ CULTVERT
 - EDGE ROAD
 - X- FENCE
 - R/W LINE
 - R/W CENTERLINE

REGISTERED PROFESSIONAL LAND SURVEYOR
 Gary K. Roberts
 JULY 30, 1983
 GARY K. ROBERTS 2627
 RENEWS 12/31/06

UMATILLA COUNTY ROAD DEPARTMENT
 5120 WEST STATE
 PENDELTON, OREGON 97161
 PHONE 541/276-5424

LEGALIZATION/MONUMENTATION SURVEY
 HODGSON ROAD
 COUNTY ROAD NO. 637

LOCATED IN SECTIONS 22, 23, 27, AND 26
 TOWNSHIP 4 NORTH RANGE 36 E.W.M.

DATE OF SURVEY: MAY THROUGH JULY, 2006

MONUMENTS SET MAY THROUGH JULY, 2006

SHEET 3 OF 3

RECEIVED BY
 Umatilla County Surveyor
 Date 07-06
 06493-c