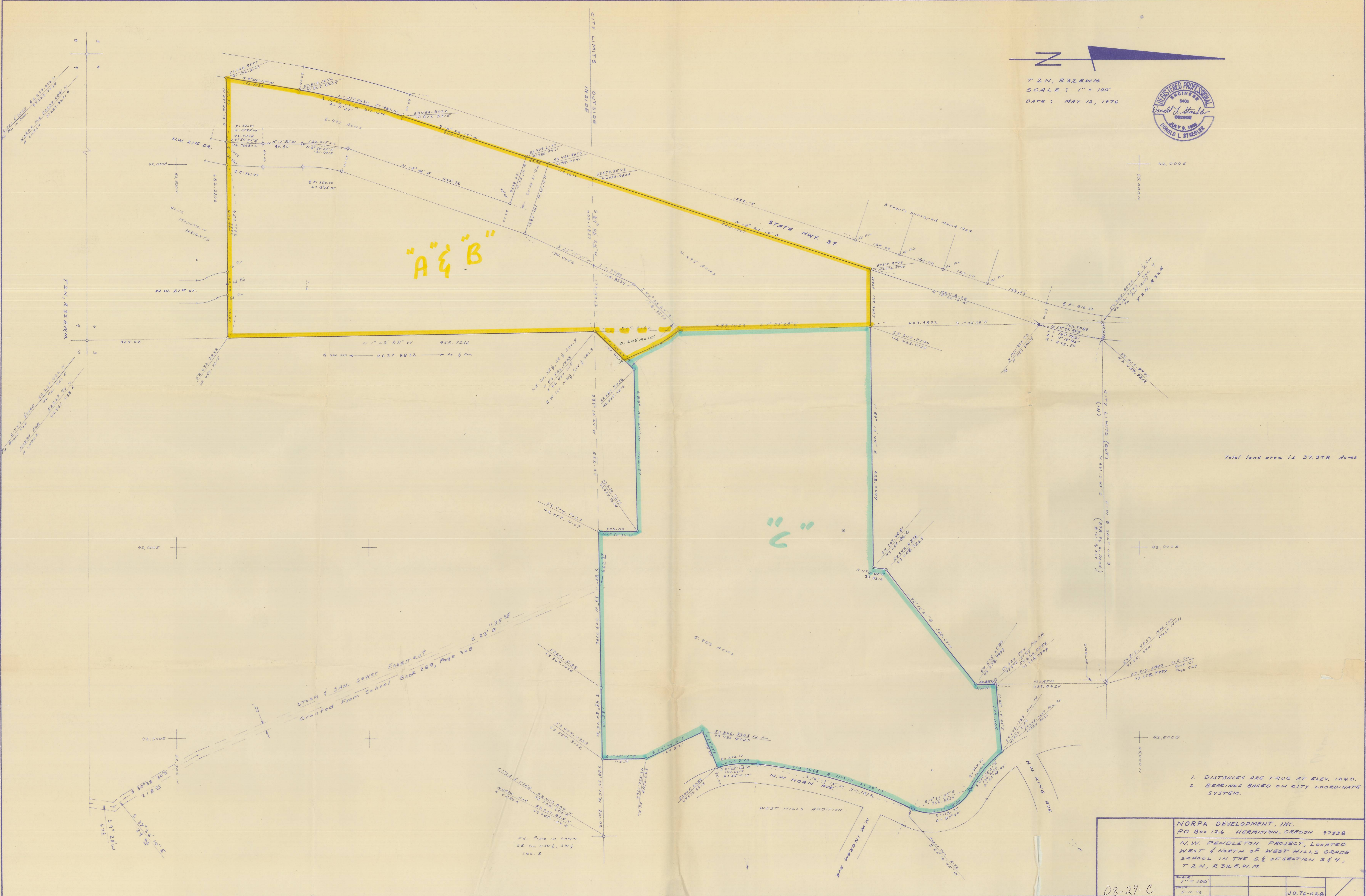
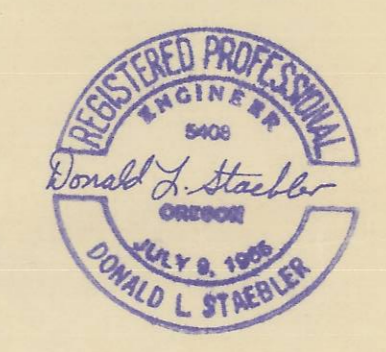


T 2 N, R 32 E, W 4  
 SCALE: 1" = 100'  
 DATE: MAY 12, 1976



Total land area is 37.378 Acres

1. DISTANCES ARE TRUE AT ELEV. 1240.
2. BEARINGS BASED ON CITY COORDINATE SYSTEM.

NORPA DEVELOPMENT, INC.  
 P.O. Box 126 HERMISTON, OREGON 97838  
 N.W. PENDLETON PROJECT, LOCATED  
 WEST & NORTH OF WEST HILLS GRADE  
 SCHOOL IN THE S 1/2 OF SECTION 3 & 4,  
 T 2 N, R 32 E, W 4.

SCALE:	1" = 100'		
DATE:	5-12-76		
			UO.76-028

08-29-C