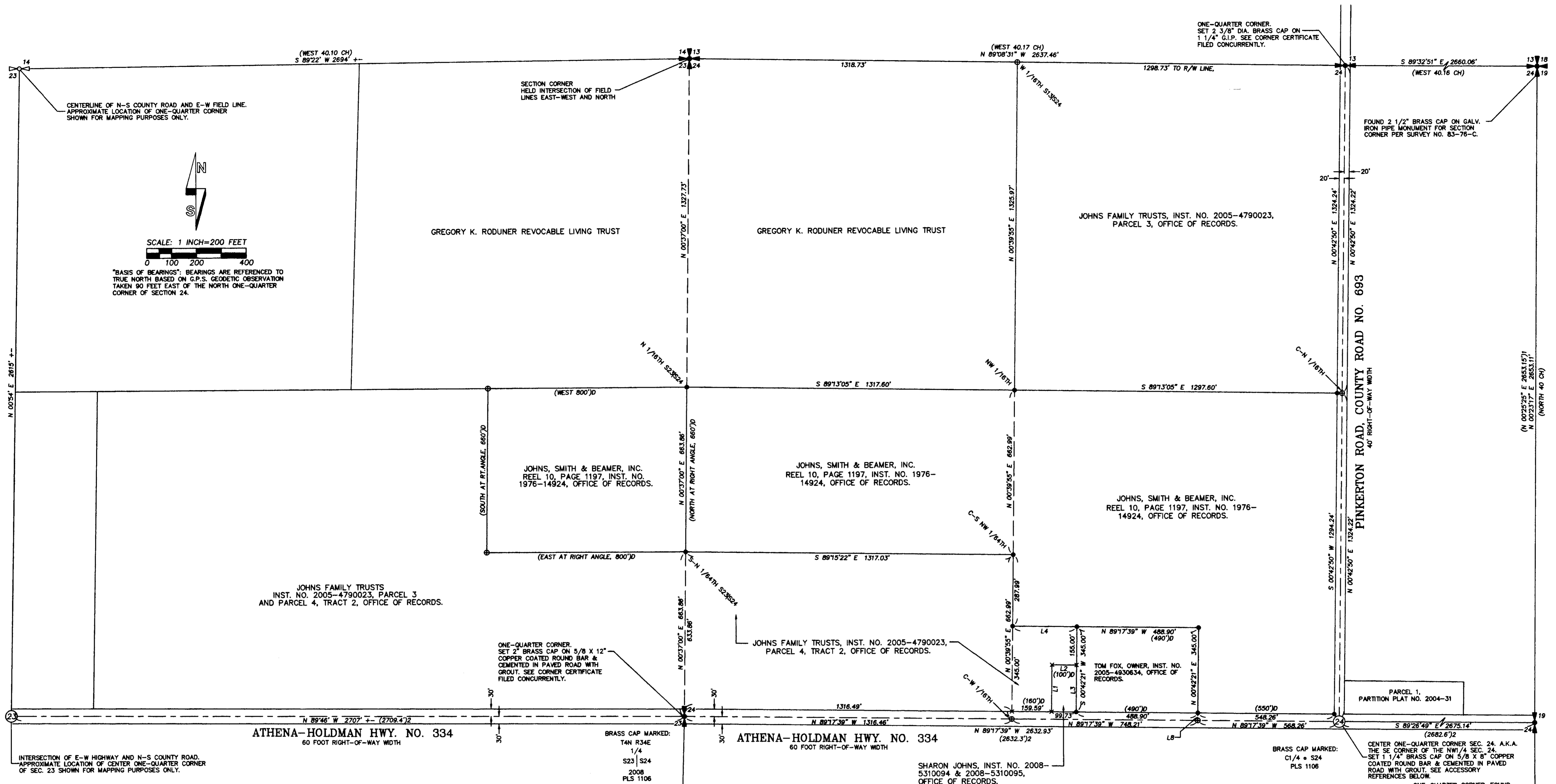


# RECORD OF SURVEY



N  
S

SCALE: 1 INCH=200 FEET  
0 100 200 400

"BASIS OF BEARINGS": BEARINGS ARE REFERENCED TO TRUE NORTH BASED ON G.P.S. GEODETIC OBSERVATION TAKEN 90 FEET EAST OF THE NORTH ONE-QUARTER CORNER OF SECTION 24.

LINE NO.	BEARING	DISTANCE
L1	N 00°42'21" E	190.00'
L2	S 89°17'39" E	99.73'
L3	S 00°42'21" W	190.00'
L4	N 89°17'39" W	259.57'
L8	N 00°42'21" E	30.00'

- LEGEND**
- ⊕ FOUND OR REESTABLISHED 1/4 OR SECTION CORNER, AS NOTED.
  - SET 5/8" X 30" IRON REBAR WITH 1 1/4" RED PLASTIC CAP STAMPED "ORPLS 1106 WAPLS 17372."
  - ⊗ 5/8" REBAR WITH 1 1/4" YELLOW PLASTIC CAP, PER PARTITION PLAT NO. 2004-31.
  - ⊙ CALCULATED POINT ONLY. NOTHING FOUND OR SET.
  - FENCE. NOT ALL FENCES ARE SHOWN.
  - (XX) RECORD DIMENSION FROM GLO SURVEY BY W.H. ODELL, UNDER CONTRACT NO. 114, DATED JULY 2, 1866.
  - (XX)1 RECORD DIMENSION FROM SURVEY NO. 97-141-C.
  - (XX)2 RECORD DIMENSION FROM STATE HIGHWAY MAP NO. 68-16-19, DATED SEPT., 1945.
  - (XX)3 RECORD DIMENSION FROM DEED DESCRIPTION.

**NARRATIVE:**

THIS SURVEY WAS MADE AT THE REQUEST OF JOHNS SMITH & BEAMER, INC., FOR THE PURPOSE OF MONUMENTING CERTAIN LANDS IN SECTION 24, T4N., R34E., W.M.

THE SURVEY REQUIRED SUBDIVISION OF THE NORTHWEST QUARTER OF SECTION 24, T4N., R34E., W.M., THE CORNERS CONTROLLING THE NORTHWEST QUARTER WERE DETERMINED AS FOLLOWS:

**NORTH ONE-QUARTER CORNER OF SECTION 24:**  
HELD A POINT IN THE CENTER LINE OF PINKERTON ROAD, SOUTH 89°41'56" EAST, PARALLEL WITH THE SOUTH LINE OF THE ATHENA CEMETERY, 20.00 FEET FROM THE ONE-QUARTER CORNER POSITION HELD BY WAYNE HARRIS IN HIS PLAT OF THE FIRST ADDITION TO ATHENA CEMETERY. THE POSITION BY HARRIS FOR THE ATHENA CEMETERY APPEARS TO HAVE BEEN DETERMINED BY SINGLE PROPORTION MEASUREMENT BETWEEN THE NORTHEAST CORNER OF SECTION 24 AND A FENCE INTERSECTION AT THE SOUTHWEST CORNER OF SECTION 14. THE HARRIS SURVEY INFORMATION SHOWS ON HARRIS SURVEY FOR WAYNE PINKERTON, DATED SEPTEMBER 7, 1956 AND RECORDED AS SURVEY NO. Q-710-A-X.

**NORTHWEST QUARTER CORNER OF SECTION 24:**  
FOR THE NORTHWEST CORNER OF SECTION 24, I HELD THE INTERSECTION OF AN EAST-WEST FIELD LINE WITH A FIELD LINE EXTENDING NORTH AND REMONUMENTED THE POSITION AS INDICATED. THE CORNER AREA IS NOW SURROUNDED BY WHEAT CROPS. IT IS INTENDED THAT THIS CORNER WILL BE REMONUMENTED AFTER HARVEST AND A CORNER CERTIFICATE FILED AT THAT TIME.

**WEST ONE-QUARTER CORNER OF SECTION 24:**  
FOR THE WEST ONE-QUARTER CORNER OF SECTION 24, I HELD A POINT IN THE CENTERLINE OF THE PAVEMENT OF THE ATHENA-HOLDMAN HIGHWAY, N 00°42'21" E, 28.60 FEET FROM AN OREGON STATE HIGHWAY DEPARTMENT BRASS CAP IN CONCRETE BENCH MARK. I FIND NO RECORD FOR THIS BENCH MARK, BUT NOTE STATE HIGHWAY MAP NO. 68-16-19, DATED SEPT., 1945, SHOWS A "I.P." SET 30 FEET LEFT AND RIGHT OF A UNNAMED SYMBOL, DESIGNATING THE ONE-QUARTER CORNER. FROM THE POINT HELD FOR THE ONE-QUARTER CORNER, A FIELD BERM EXTENDS SOUTH. I ALSO NOTE THE STATE HIGHWAY MAP DISTANCE BETWEEN THE WEST ONE-QUARTER CORNER AND THE CENTER ONE-QUARTER CORNER DETERMINED BY THIS SURVEY, MATCHES WITHIN 0.7 FOOT. WE SEARCHED BUT DID NOT RECOVER THE "I.P." MONUMENTS 30 FEET NORTH AND SOUTH OF THE CORNER POINT.

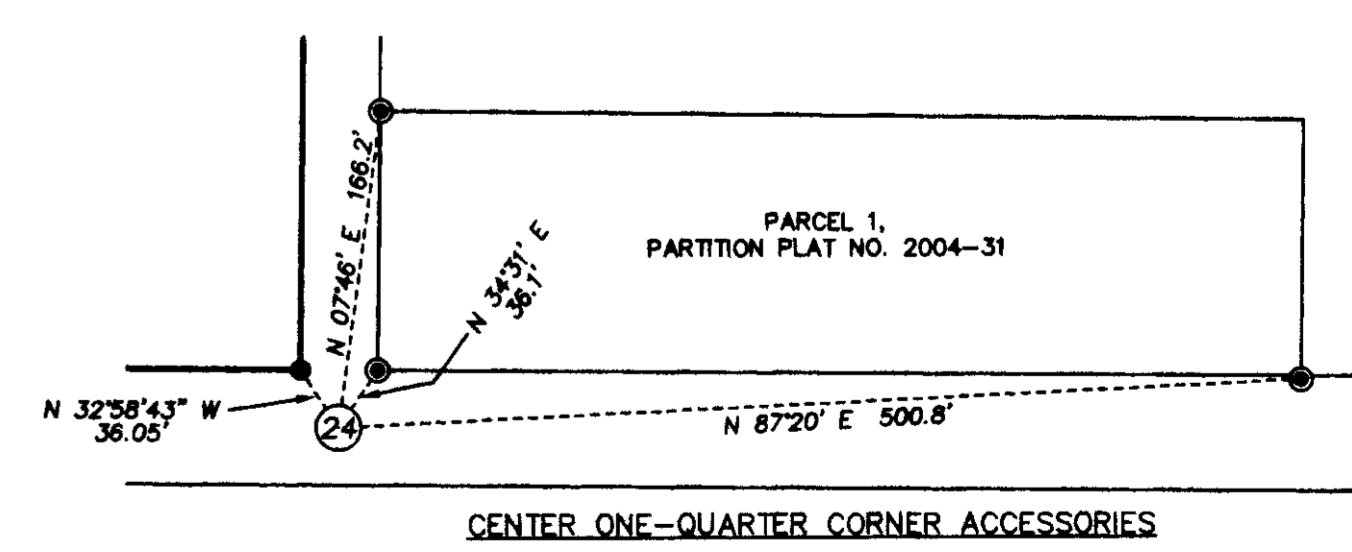
**CENTER ONE-QUARTER CORNER OF SECTION 24:**  
ESTABLISHED THE POSITION FOR THE CENTER ONE-QUARTER CORNER OF SECTION 24 BY INTERSECTION OF THE VISUAL CENTER LINES OF THE ATHENA-HOLDMAN HIGHWAY AND PINKERTON ROAD INTERSECTING FROM THE NORTH. THIS POSITION FITS WITH THE POSITION INDICATED ON STATE HIGHWAY MAP NO. 68-16-19, AND MATCHES THE STATE HIGHWAY MAP DISTANCE BETWEEN THE CENTER ONE-QUARTER AND WEST ONE-QUARTER CORNERS WITHIN 0.7 FOOT.

**NARRATIVE, CONTINUED:**

I NOTE THAT ODELL, UNDER CONTRACT NO. 114, IN 1866, ESTABLISHED THE SOUTH ONE-QUARTER CORNER OF SECTION 24 AT THE MID-POINT BETWEEN THE SOUTHWEST AND SOUTHEAST CORNERS, AND THAT FRACTIONAL PORTIONS OF SECTION 24, NORTH OF WILDHORSE CREEK, (THE OLD INDIAN RESERVATIONS BOUNDARY), ARE LOTTED. CURRIN AND NOLAND RAN THE MEANDERS FOR WILDHORSE CREEK AND SUBDIVIDED AND LOTTED THE PORTION OF SECTION 24 SOUTH OF WILDHORSE CREEK, UNDER SPECIAL CONTRACT DATED MAY 4, 1887. CURRIN AND NOLAND'S SURVEY DID NOT HOLD THE MID-POINT ON THE SOUTH LINE OF SECTION 24, BUT ESTABLISHED A NEW POSITION FOR THE SOUTH ONE-QUARTER CORNER, 40.64 CHAINS FROM THE SOUTHEAST CORNER AND 40.00 CHAINS FROM THE SOUTHWEST CORNER. A NUMBER OF LAND PATENTS WERE GRANTED IN THE PORTION OF SECTION 24 NORTH OF WILDHORSE CREEK PRIOR TO THE CURRIN AND NOLAND SURVEY. THEREFORE, THE PORTION OF SECTION 24 NORTH OF WILDHORSE CREEK SHOULD BE SUBDIVIDED USING THE ODELL RECORD. WE FIND NO ACCEPTABLE EVIDENCE OF THE SOUTH ONE-QUARTER CORNERS OF SECTION 24 BY ODELL OR CURRIN AND NOLAND. THE SOUTHEAST CORNER OF SECTION 24 WAS RE-ESTABLISHED UNDER SURVEY NO. 97-141-C. FOR THE PURPOSE OF EVALUATION, I HELD THE CORNER OF FIELD LINES EXTENDING NORTH-SOUTH AND WEST AS BEST REMAINING EVIDENCE OF THE SOUTHWEST CORNER OF SECTION 24. TO VERIFY THE POSITION OF THE CENTER ONE-QUARTER CORNER AS ESTABLISHED BY THIS SURVEY, I CALCULATED THE THEORETICAL LOCATION FOR THE CENTER ONE-QUARTER CORNER BY INTERSECTING LINES BETWEEN OPPOSITE ONE-QUARTER POSITIONS AND FIND THAT THEORETICAL POSITION FOR THE CENTER ONE-QUARTER CORNER TO BE EAST, 8.13 FEET AND NORTH 3.45 FEET FROM THE POSITION DETERMINED BY THE INTERSECTION OF EXISTING ROADS. I HELD THE POSITION DETERMINED BY INTERSECTION OF ROAD CENTERLINES FOR THE CENTER ONE-QUARTER CORNER AND MONUMENTED IT AS SHOWN.

EXISTING DEED DESCRIPTIONS FOR LAND TRACTS ABUTTING THE ATHENA-HOLDMAN HIGHWAY IN THE SOUTHEAST QUARTER OF THE NORTHWEST QUARTER WERE WRITTEN ASSUMING THE SOUTH LINE OF THE SOUTHEAST QUARTER OF THE NORTHWEST QUARTER WAS EXACTLY 1320 FEET. I PROPORTIONED THE EAST-WEST DIMENSION OF EACH EXISTING TRACT TO DISTRIBUTE THE DEFICIENCY.

THIS SURVEY WAS MADE BY A 2 PERSON CREW USING TRIMBLE GEODETIC GPS RECEIVERS OPERATED IN REAL TIME KINEMATIC MODE. CONTROL CORNER TIES AND NEW MONUMENT SETS WERE VERIFIED BY REDUNDANT OBSERVATIONS.



<p>RECEIVED BY Umatilla County Surveyor Date: 6-08 Filed by: [Signature] 08-084-C</p>	<p>REGISTERED PROFESSIONAL LAND SURVEYOR [Signature: William R. Wells] OREGON JULY 22, 1977 WILLIAM R. WELLS 1106 RENEWS 6/30/08</p>	<p>WILLIAM R. WELLS, PLS 2602 N.E. RIVERSIDE PLACE P.O. BOX 1698 PENDLETON, OREGON PHONE: (541) 276-6362</p>	<p>PROJECT: SURVEY FOR: JOHNS, SMITH &amp; BEAMER, INC. LOCATED IN THE NORTHEAST 1/4 OF SECTION 24, T4N, R34E, W1/4 UMATILLA COUNTY, OREGON.</p>
DATE: 05/2008	DR. BY: JMW	CK. BY: WRW	NO: 08-1163