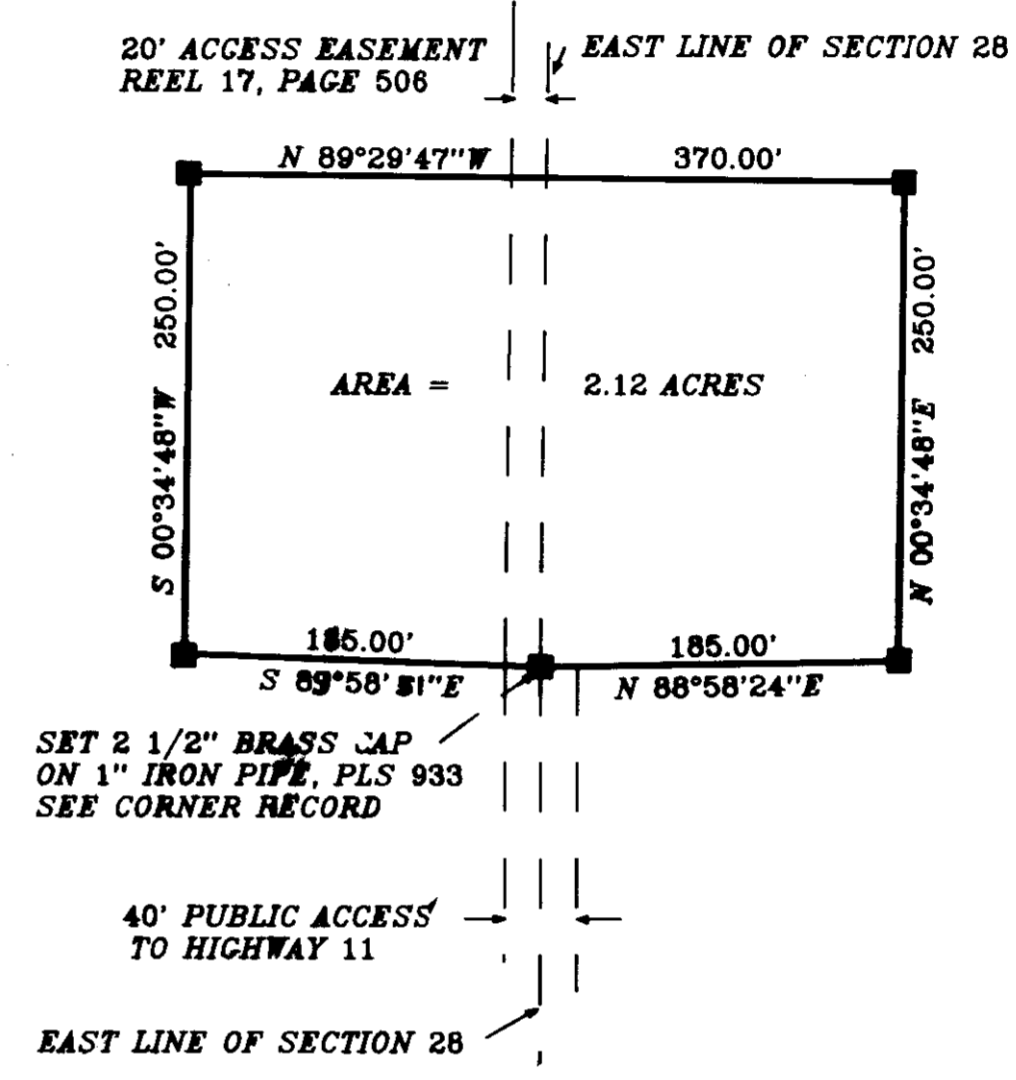
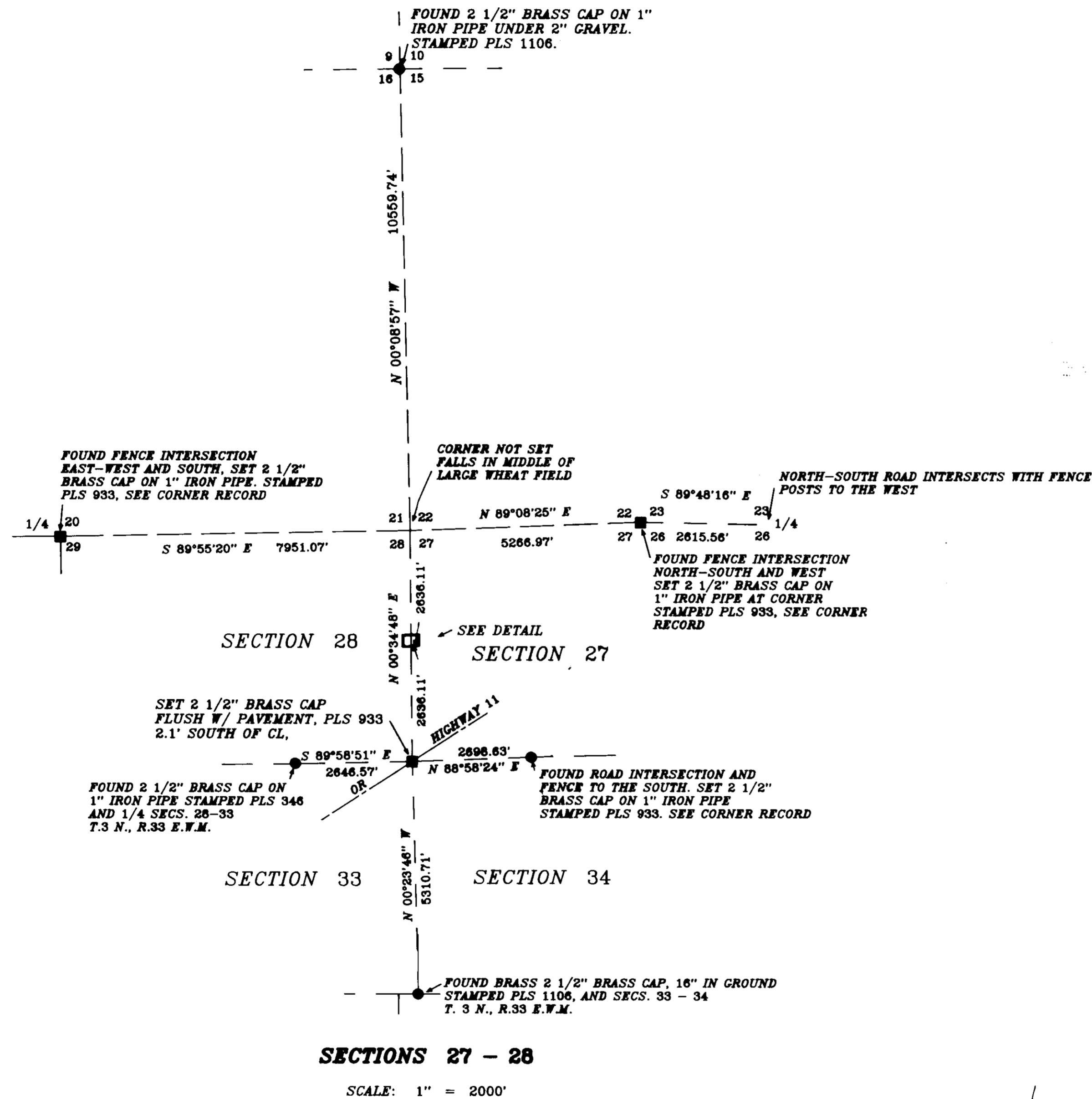




SCALE: 1" = 2000'



DETAIL
SCALE: 1" = 100'

NARRATIVE

PURPOSE OF THIS SURVEY WAS TO SET THE BOUNDARIES OF THAT PARCEL DESCRIBED ON PAGE 1809 OF REEL 230 OF THE DEED RECORDS OF UMATILLA COUNTY. THIS AREA IS IN THE CENTER OF AN AREA THAT HAS BEEN FARMED FOR MANY YEARS. NONE OF THE ORIGINAL CORNERS IN THIS TOWNSHIP HAVE BEEN RECOVERED. MOST OF THE ESTABLISHED CORNERS ARE AT FENCE INTERSECTIONS OF ROAD AND FENCE INTERSECTIONS AND I USED THE SAME TYPE OF CORNER LOCATIONS IN THIS PROJECT.

THE SOUTHEAST CORNER OF SECTION 28 WAS ESTABLISHED FROM A STATE HIGHWAY RIGHT OF WAY MAP THAT SET THE CENTERLINE OF HIGHWAY 11 2.1' NORTH OF THE SECTION CORNER. I TIED THE CENTERLINE OF HIGHWAY 11 AND THE ROADS TO THE NORTH AND SOUTH AND SET THE LOCATION OF THE SECTION CORNER FROM THAT INFORMATION. DOUBLE PROPORTIONING FROM OTHER CORNERS DID NOT FIT THE EXISTING IMPROVEMENTS BY 30 TO 70 FEET. DISTANCES ARE SHOWN FROM THE CORNER RESET FROM THE HIGHWAY DATA TO THE CORNERS FOUND AND SET IN THIS SURVEY.

AFTER THE SOUTHEAST CORNER WAS ESTABLISHED THE NORTHEAST CORNER OF SECTION 28 WAS DOUBLE PROPORTIONED FROM THE POINTS SHOWN. THIS CORNER IS IN THE MIDDLE OF A LARGE FIELD AND MORE THAN 500 FEET FROM THE NEAREST FENCE SO I DID NOT SET ANYTHING AT THIS LOCATION. NO OTHER ACCEPTABLE CORNERS WERE FOUND CLOSER TO THE POINTS USED. AFTER DOUBLE PROPORTIONING THE QUARTER CORNER COMMON TO SECTIONS 27 AND 28 WAS SET BY SINGLE PROPORTIONING BETWEEN THE SOUTHEAST AND NORTHEAST CORNERS ESTABLISHED. THIS LOCATION FELL SLIGHTLY TO THE SOUTH OF OLD FENCE POSTS RUNNING IN AN EAST WEST DIRECTION AND UNDER A POWERLINE RUNNING ON THE EAST EDGE OF THE PUBLIC ROAD RUNNING TO THE SOUTH.

THE EASEMENT RUNNING THROUGH THE PROPERTY WAS STAKED WITH WOODEN HUBS RUNNING ALONG THE EAST EDGE OF THE EASEMENT.

BEARINGS ARE BASED UPON WORK DONE WITH TRIMBLE GPS RECEIVERS. THE GRID FACTOR USED IS .9998661 AND THE THETA ANGLE IS 01°14'34". ALL DISTANCES AND BEARINGS ARE SHOWN AS GEODETIC, OR TRUE BEARINGS AND DISTANCES.

- INDICATES FOUND POINT AS NOTED.
- INDICATES SET 5/8" BY 30" IRON REBAR W/ ALUM CAP STAMPED PLS 933 UNLESS OTHERWISE NOTED.

KRUMBEIN ENGINEERING LTD. ENGINEERS - SURVEYORS - PLANNERS 361 S.E. Second Pendleton, Oregon	Scale AS SHOWN	Drn. By HP	Draw. No. 3607D	Revision 1
	Date 6-3-98	Ckd. By	Job No. 9845	Revision 2
BOUNDARY SURVEY LEGUIN SECTIONS 27 & 28 T. 3 N., R. 33 E.W.M. UMATILLA COUNTY		REGISTERED PROFESSIONAL LAND SURVEYOR 		
		OREGON JULY 17, 1970 DAVID H. KRUMBEIN 683		RENEWS 4/30/99