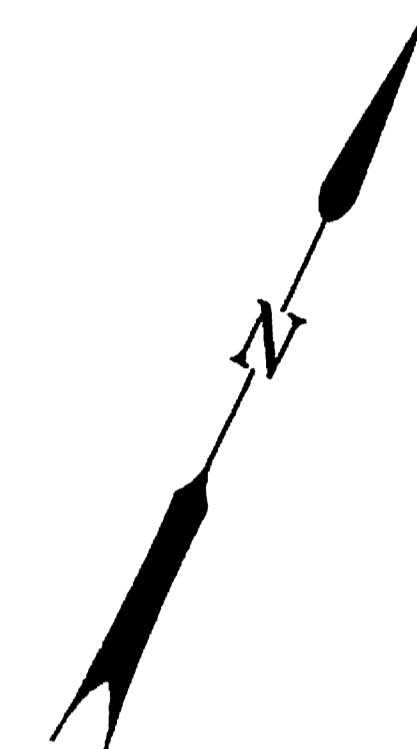
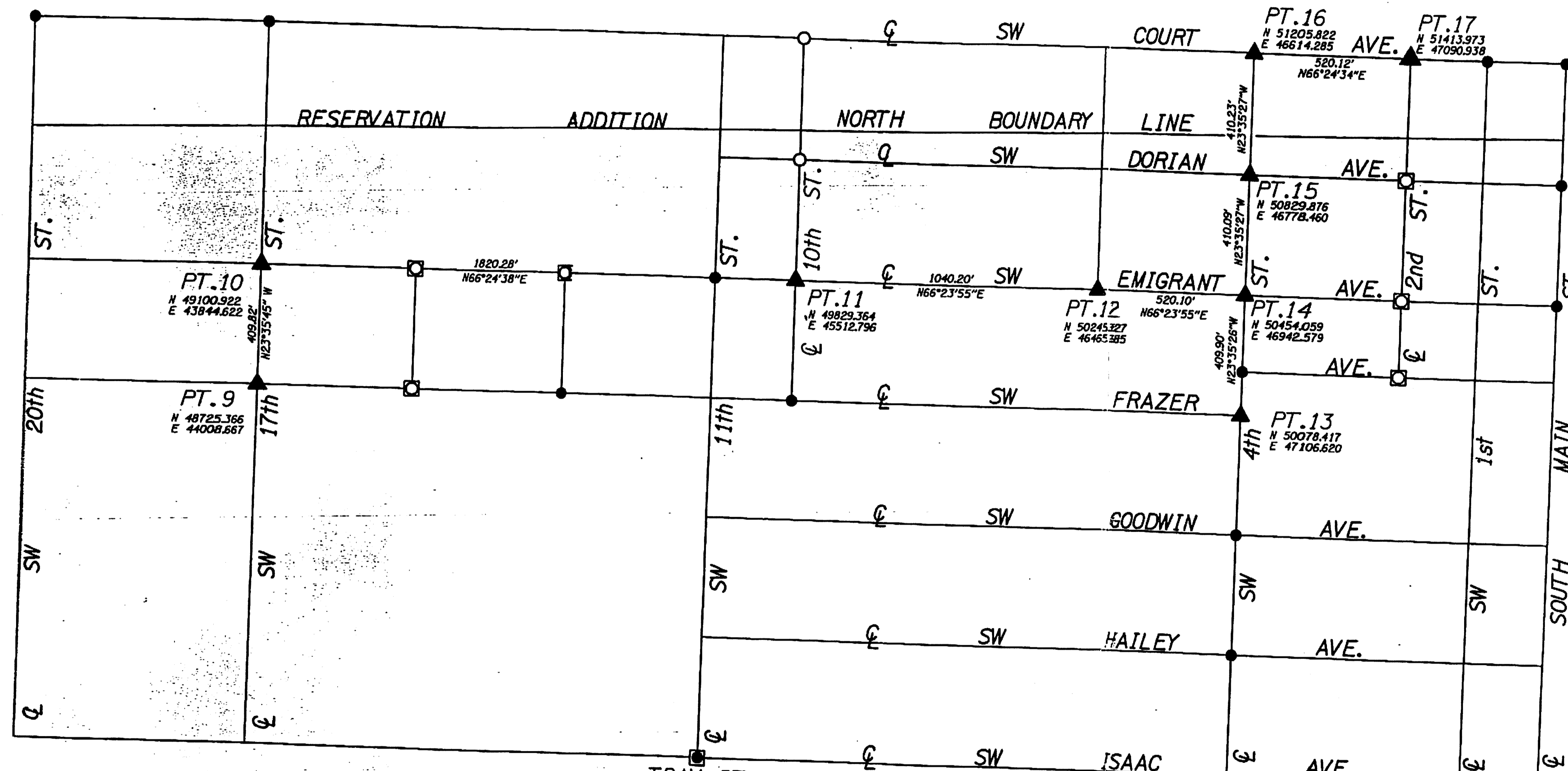


SURVEY LOCATED IN  
 Sec 10 T.2 N. R.32 E W.M.  
 WITHIN THE CITY OF PENDLETON  
 UMATILLA COUNTY

DISTRICT 12 PRESERVATION MONUMENTATION				SHEET No.
				1
FED. ROAD Div. No.	STATE	PROJECT NUMBER	FISCAL YEAR	TOTAL SHEETS
10	OREGON	C11338	1993	1



WALTER R. SULLIVAN  
 EXPIRATION DATE: 12-31-94  
 OREGON STATE HIGHWAY DIVISION  
 3012 Island Ave.  
 LaGrands, Oregon  
 97850

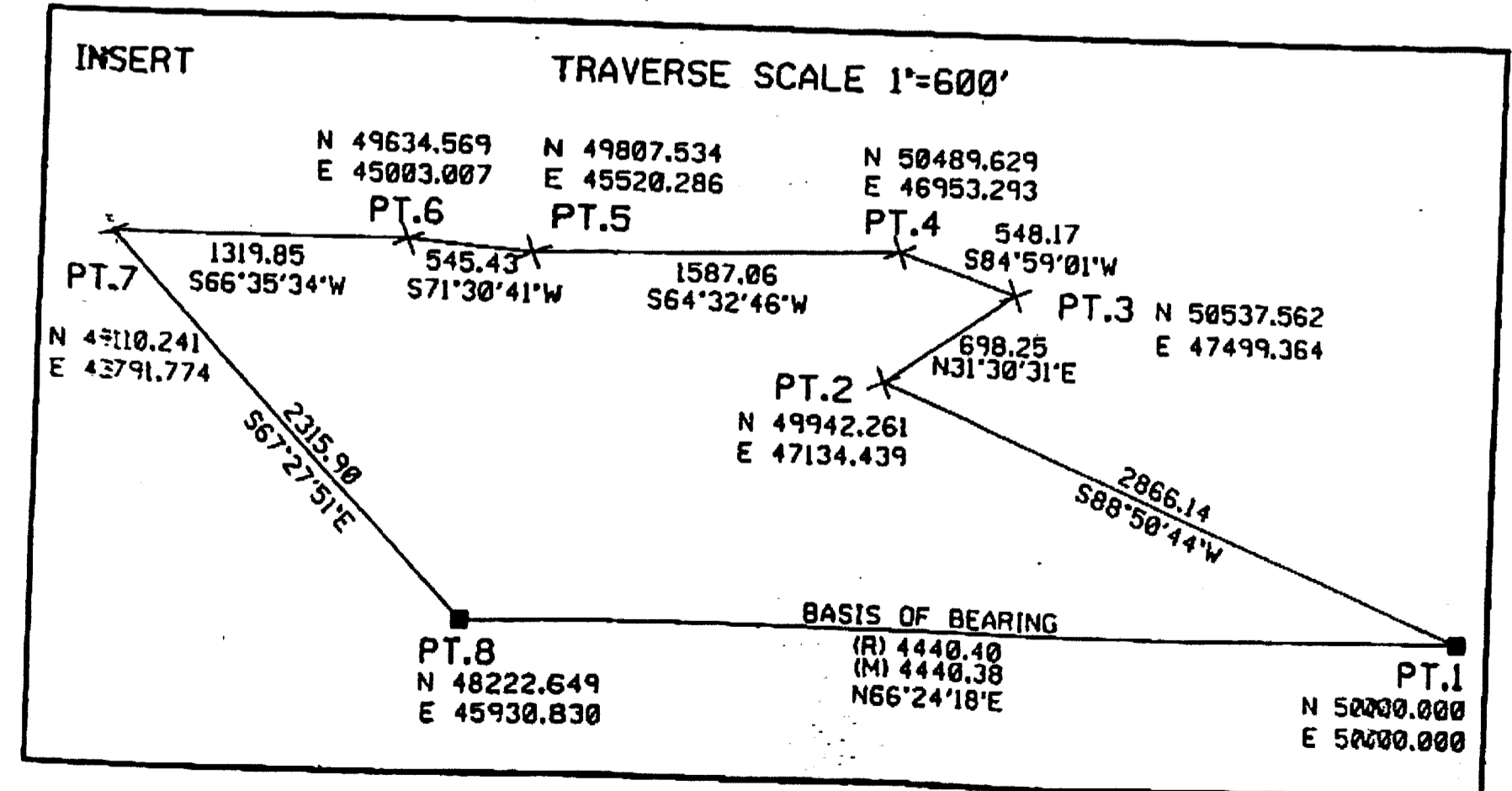
SURVEY NARRATIVE

This survey was conducted to reestablish monuments on Frazer Ave., Emigrant Ave., Dorian Ave. and Court Ave. in the city of Pendleton. These monuments had been obliterated by the Oregon State Hwy. Div. construction projects.

Five monuments were set consisting of 2 1/2" brass discs, stamped City of Pendleton, poured into 6" diameter concrete, 3"-/- below existing pavement, with a 5/8" steel access well installed on each.

All points could not be established due to insufficient call data and two points fell within utility hole covers. All points define the street intersections.

Instrument used was a T1610 with DI 1600 LEICA, 1994.



TRAV. PT. 8  
 N 48222.649  
 E 45930.830  
 Found:  
 P.K. Nail in Pavement

N 66°23'53"E  
 (R) 4440.40  
 (M) 4440.38

TRAV. PT. 1  
 N 50000.000  
 E 50000.000  
 Found:  
 2 1/2" Brass Disc  
 in 6" well  
 0.8' Below extg. A.C.  
 Top marked "MON"

- LEGEND**
- ▲ — MONUMENTS SET PER THIS SURVEY.
  - — MONUMENTS FOUND BY THE CITY OF PENDLETON AS INDICATED ON DRAWING 24-7591.
  - ◻ — FOUND MONUMENTS
  - — MONUMENTS NOT SET PER THIS SURVEY DUE TO CONFLICT WITH UTILITIES.
  - ◻ — MONUMENTS NOT SET PER THIS SURVEY DUE TO INSUFFICIENT CALL DATA.

**NOTE:**

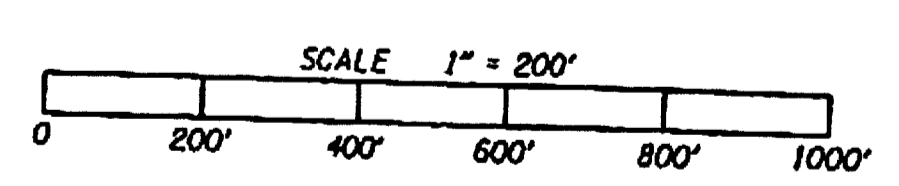
ALL INFORMATION SHOWN IS BASED ON PENDLETON LOCAL GRID.

THIS DRAWING IS BASED ON THE CITY OF PENDLETON'S SURVEY DRAWING NO. 24-7591.

FOR MONUMENTS SET SEE FIELD NOTES ON FILE WITH UMATILLA COUNTY SURVEYOR OFFICE AT 3920 WESTGATE, PENDLETON, OREGON, 97838.

BEARINGS AND DISTANCES STATED ON THIS DRAWING ARE COMPUTED BEARINGS AND DISTANCES BETWEEN THE MONUMENTS SET BY THIS SURVEY.

USE THIRD DECIMAL PLACE ON COORDINATES FOR COMPUTATION PURPOSES ONLY.



**RECEIVED BY**  
 Umatilla County Surveyor  
 Date: 5/9/2017  
 Rec'd By: *[Signature]*  
 No.: 17-058-C

/user/05803/projects/district12/district12.dgn