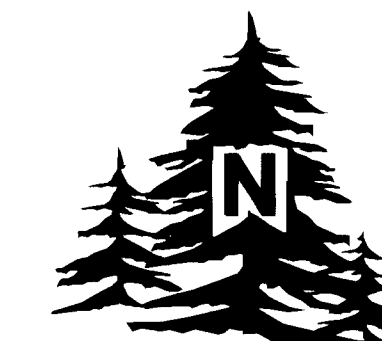


# RECORD OF SURVEY

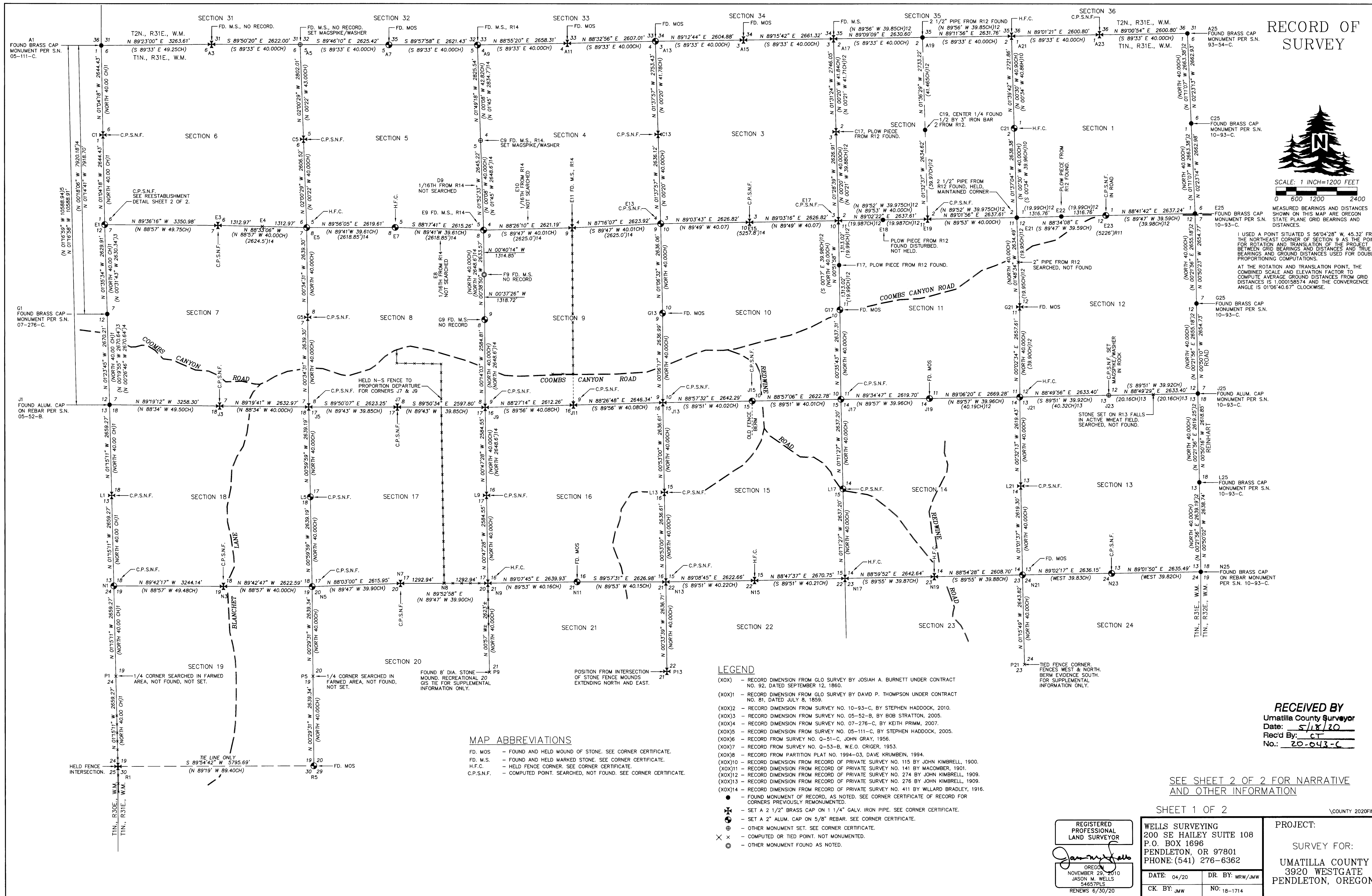


SCALE: 1 INCH=1200 FEET  
0 600 1200 2400

MEASURED BEARINGS AND DISTANCES SHOWN ON THIS MAP ARE OREGON STATE PLANE GRID BEARINGS AND DISTANCES.

I USED A POINT SITUATED S 56°04'28" W, 45.32' FROM THE NORTHEAST CORNER OF SECTION 9 AS THE POINT FOR ROTATION AND TRANSLATION OF THE PROJECT. BETWEEN GRID BEARINGS AND DISTANCES AND TRUE BEARINGS AND GROUND DISTANCES USED FOR DOUBLE PROPORTIONING COMPUTATIONS.

AT THE ROTATION AND TRANSLATION POINT, THE COMBINED SCALE AND ELEVATION FACTOR TO COMPUTE AVERAGE GROUND DISTANCES FROM GRID DISTANCES IS 1.00015874 AND THE CONVERGENCE ANGLE IS 0°06'40.67" CLOCKWISE.



### LEGEND

- (XOX) - RECORD DIMENSION FROM GLO SURVEY BY JOSIAH A. BURNETT UNDER CONTRACT NO. 92, DATED SEPTEMBER 12, 1860.
- (XOX1) - RECORD DIMENSION FROM GLO SURVEY BY DAVID P. THOMPSON UNDER CONTRACT NO. 81, DATED JULY 8, 1859.
- (XOX2) - RECORD DIMENSION FROM SURVEY NO. 10-93-C, BY STEPHEN HADDOCK, 2010.
- (XOX3) - RECORD DIMENSION FROM SURVEY NO. 05-52-B, BY BOB STRATTON, 2005.
- (XOX4) - RECORD DIMENSION FROM SURVEY NO. 07-276-C, BY KEITH PRIMM, 2007.
- (XOX5) - RECORD DIMENSION FROM SURVEY NO. 05-111-C, BY STEPHEN HADDOCK, 2005.
- (XOX6) - RECORD FROM SURVEY NO. Q-51-C, JOHN GRAY, 1956.
- (XOX7) - RECORD FROM SURVEY NO. Q-53-B, W.E.O. CRIGER, 1953.
- (XOX8) - RECORD FROM PARTITION PLAT NO. 1994-03, DAVE KRUMBEIN, 1994.
- (XOX10) - RECORD DIMENSION FROM RECORD OF PRIVATE SURVEY NO. 115 BY JOHN KIMBRELL, 1900.
- (XOX11) - RECORD DIMENSION FROM RECORD OF PRIVATE SURVEY NO. 141 BY MACOMBER, 1901.
- (XOX12) - RECORD DIMENSION FROM RECORD OF PRIVATE SURVEY NO. 274 BY JOHN KIMBRELL, 1909.
- (XOX13) - RECORD DIMENSION FROM RECORD OF PRIVATE SURVEY NO. 276 BY JOHN KIMBRELL, 1909.
- (XOX14) - RECORD DIMENSION FROM RECORD OF PRIVATE SURVEY NO. 411 BY WILLARD BRADLEY, 1916.
- - FOUND MONUMENT OF RECORD, AS NOTED. SEE CORNER CERTIFICATE OF RECORD FOR CORNERS PREVIOUSLY REMONUMENTED.
- ⊕ - SET A 2 1/2" BRASS CAP ON 1 1/4" GALV. IRON PIPE. SEE CORNER CERTIFICATE.
- ⊗ - SET A 2" ALUM. CAP ON 5/8" REBAR. SEE CORNER CERTIFICATE.
- ⊙ - OTHER MONUMENT SET. SEE CORNER CERTIFICATE.
- ⊗ - COMPUTED OR TIED POINT. NOT MONUMENTED.
- ⊙ - OTHER MONUMENT FOUND AS NOTED.

### MAP ABBREVIATIONS

- FD. MOS - FOUND AND HELD MOUND OF STONE. SEE CORNER CERTIFICATE.
- FD. M.S. - FOUND AND HELD MARKED STONE. SEE CORNER CERTIFICATE.
- H.F.C. - HELD FENCE CORNER. SEE CORNER CERTIFICATE.
- C.P.S.N.F. - COMPUTED POINT. SEARCHED, NOT FOUND. SEE CORNER CERTIFICATE.

SEE SHEET 2 OF 2 FOR NARRATIVE AND OTHER INFORMATION

SHEET 1 OF 2

COUNTY 2020FINAL

REGISTERED PROFESSIONAL LAND SURVEYOR

*Jason M. Wells*

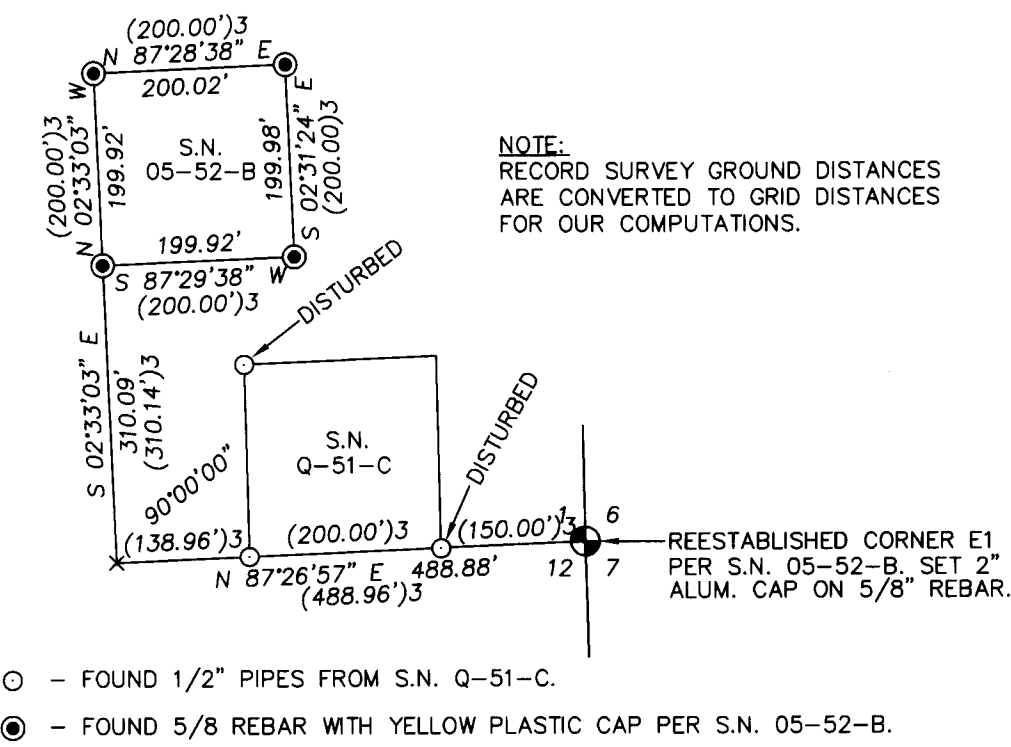
OREGON NOVEMBER 25, 2010 JASON M. WELLS 54657PLS RENEWS 6/30/20

WELLS SURVEYING  
200 SE HAILEY SUITE 108  
P.O. BOX 1696  
PENDLETON, OR 97801  
PHONE: (541) 276-6362

DATE: 04/20 DR. BY: WRW/JMW  
CK. BY: JMW NO: 18-1714

PROJECT:  
SURVEY FOR:  
UMATILLA COUNTY  
3920 WESTGATE  
PENDLETON, OREGON

RECEIVED BY  
Umatilla County Surveyor  
Date: 5/18/20  
Rec'd By: CT  
No.: 20-043-C



DETAIL OF REESTABLISHMENT OF NORTHWEST CORNER OF SECTION 7, BASED ON PREVIOUS SURVEYS.

**NARRATIVE**

THIS SURVEY WAS MADE AT THE REQUEST OF UMATILLA COUNTY TO RECOVER OR REESTABLISH AND MONUMENT SECTION AND ONE-QUARTER SECTION CORNERS IN THE NORTH HALF OF TOWNSHIP 1 NORTH, RANGE 31 EAST, W.M. THE WORK WAS AUTHORIZED BY THE UMATILLA COUNTY SURVEYOR AND BOARD OF COUNTY COMMISSIONERS AND FUNDED BY THE PUBLIC LAND CORNER MONUMENTATION FUND.

**HISTORY OF SURVEYS IN THE PROJECT AREA:**

THE WEST LINE OF THE TOWNSHIP WAS ESTABLISHED BY DAVID P. THOMPSON UNDER GLO CONTRACT NO. 81, DATED JULY 8, 1859.

THE NORTH AND EAST LINES OF THE TOWNSHIP, AND INTERIOR SECTION AND ONE-QUARTER CORNERS WERE ESTABLISHED BY JOSIAH A. BURNETT, UNDER GLO CONTRACT NO. 92, DATED SEPTEMBER 12, 1860.

RECORD OF PRIVATE SURVEYS, BOOKS 1 AND 2, FOUND IN THE COUNTY SURVEY OFFICE, REVEAL A NUMBER OF SURVEYS MADE IN THE PROJECT AREA AND THOSE SURVEY RECORDS WERE UTILIZED FOR THE PRESENT SURVEY. IT IS IMPORTANT TO NOTE THAT BOOKS 1 AND 2 ONLY INCLUDE CERTAIN PRIVATE SURVEYS MADE BY COUNTY SURVEYORS DURING BETWEEN ABOUT 1878 AND 1940. THERE ARE ALSO UNEXPLAINED GAPS IN THE SURVEY NUMBER SEQUENCE IN BOOKS 1 AND 2.

THERE ARE UNDOUBTEDLY MANY OTHER SURVEYS MADE BY PRIVATE SURVEYORS AND ENGINEERS BETWEEN THE ORIGINAL SURVEYS AND THE BEGINNING OF OREGON'S SURVEY RECORDING ACT IN ABOUT 1950. WITH FEW EXCEPTIONS, NEARLY ALL OF THE OLD PRIVATE SURVEY RECORDS FOR SURVEYS NOT MADE BY COUNTY SURVEYORS PRIOR TO OREGON'S SURVEY RECORDING ACT UNRECORDED OR LOST. THIS FACT IS EVIDENCED BY THE NUMBER OF UNRECORDED MARKED STONES AND ROCK MOUNDS RECOVERED DURING THIS SURVEY.

CORNERS FOR THE EAST LINE OF THE TOWNSHIP WERE MAINTAINED, RECOVERED OR REESTABLISHED ON RECORD SURVEY NO. 10-093-C. I MEASURED THE EXISTING MONUMENT POSITIONS BUT DID UPDATE OR MAINTAIN THEM. CERTAIN CORNERS ON THE WEST SIDE OF THE TOWNSHIP HAVE BEEN RECOVERED OR REESTABLISHED IN RECORD SURVEY NOS. 05-52-B, 05-111-C AND 07-276-C. I MEASURED THE EXISTING MONUMENT POSITIONS BUT DID NOT UPDATE OR MAINTAIN THEM.

THE MOST RECENT RECORD SURVEYS, BETWEEN 1950 AND THE PRESENT ARE RECORDED IN THE UMATILLA COUNTY SURVEYOR'S OFFICE AND WERE CONSULTED FOR THIS SURVEY.

LAND CORNER RECORD FORMS ARE FILED CONCURRENTLY WITH THIS SURVEY MAP PREPARED FOR EACH SECTION OR ONE-QUARTER SECTION CORNER RECOVERED, REESTABLISHED AND MONUMENTED. THESE RECORDS SHOULD BE CONSULTED FOR INFORMATION ON EACH CORNER AND THE CORNER ACCESSORIES SET TO REFERENCE THE CORNER MONUMENT.

DURING THIS SURVEY, I RECOVERED A NUMBER OF 1/16TH CORNERS AND THE CENTER 1/4 CORNER OF SECTION 2. MOST RECOVERED CORNERS ARE FROM SURVEYS CONTAINED IN RECORD OF PRIVATE SURVEYS BOOKS 1 AND 2. THE MARKED STONE AT THE NORTH 1/16TH CORNER BETWEEN SECTIONS 8 AND 9 IS OF UNKNOWN ORIGIN. I DID NOT REMONUMENT ANY OF THESE CORNERS BUT SHOW MEASUREMENTS TO THEM ON THE SURVEY MAP. I DID NOT SEARCH 1/16TH CORNERS OR CENTER 1/4 CORNERS ON THIS PROJECT UNLESS SUPPORTED BY A RECORD SURVEY AND COULD BE USED FOR NEEDED SECTION OR 1/4 SECTION CORNER REESTABLISHMENT. FUTURE SURVEYORS WORKING IN THE SECTIONS ON THIS PROJECT SHOULD BE AWARE THAT USEFUL RECORDED OR UNRECORDED CORNERS OR FENCE EVIDENCE MAY EXIST AT UNSEARCHED POSITIONS.

GPS MEASUREMENTS ON THIS SURVEY WERE OBSERVED WITH A LEICA GEODETIC GPS UNIT CONNECTED TO THE OREGON REAL TIME NETWORK INTERNET CONNECTION AND WITH TRIMBLE GEODETIC RECEIVERS IN AREAS WHERE AN INTERNET CONNECTION COULD NOT BE ESTABLISHED. CONTROLLING CORNERS AND NEW MONUMENTS SET WERE VERIFIED BY REDUNDANT OBSERVATIONS.

**NAD 83/91 COORDINATE TABLE**

CORNER I.D.	NORTHING	EASTING	SURVEY POINT NO.
A1	709578.44	8586723.80	183
A3	709613.56	8589987.22	1054
A5	709606.19	8592609.21	482
A7	709595.62	8595234.60	1064
A9	709594.07	8597856.03	1069
A11	709644.07	8600513.87	1074
A13	709710.09	8603120.05	1084
A15	709745.91	8605724.68	1079
A17	709780.20	8608385.78	1099
A19	709819.10	8611016.10	1100
A21	709855.89	8613647.59	135
A23	709900.26	8616248.01	805
A25	709944.97	8618848.42	131
C1	706934.47	8586773.26	801
C5	706805.90	8592707.39	829
C9	706769.96	8597945.85	1170
C13	706957.78	8603198.49	835
C17	707035.12	8608458.78	1090
C19	707086.96	8611092.79	150
C21	707135.18	8613726.52	1134
C25	707284.35	8618959.33	140
E1	704290.50	8586822.73	800
E3	704267.36	8590173.63	830
E5	704200.99	8592798.72	245
E7	704203.98	8595418.33	1160
E9	704126.16	8598032.44	1191
E11	704197.69	8600652.65	249
E13	704322.73	8603273.59	833
E15	704365.74	8605900.06	834
E17	704409.08	8608526.52	803
E19	704453.30	8611163.76	804
E21	704497.85	8613801.00	148
E23	704530.73	8615117.35	430
E25	704563.62	8616433.89	806
E25	704623.68	8619070.25	100
F9	702811.39	8598047.82	1190
F17	703096.22	8608546.37	292
G1	701661.61	8586895.82	266
G5	701561.82	8592825.22	828
G9	701492.75	8598062.18	475
G13	701687.17	8603324.60	447
G17	701783.35	8608566.22	400
G21	701864.67	8613884.18	327
G25	701969.20	8619109.15	101
J1	698992.19	8586960.86	269
J3	698953.52	8590218.93	827
J5	698922.65	8592851.72	823
J7	698915.10	8595474.96	825
J9	698907.97	8598072.75	820
J11	698978.44	8600684.06	822
J13	699050.18	8603329.42	817
J15	699098.19	8605971.28	819
J17	699146.18	8608593.62	814
J19	699165.39	8611213.25	322
J21	699207.06	8613882.20	425
J23	699260.73	8616515.05	807
J25	699314.75	8619147.89	102
L1	696333.55	8587019.01	812
L5	696283.86	8592897.76	831
L9	696323.67	8598108.43	821
L13	696413.89	8603370.07	818
L17	696509.55	8608648.43	815
L21	696587.74	8613906.75	808
L25	696696.18	8619186.19	104
N1	693674.92	8587077.16	811
N3	693658.20	8590321.25	826
N5	693645.06	8592943.81	824
N7	693734.08	8595558.24	813
N8	693736.72	8596851.17	421
N9	693739.36	8598144.11	420
N11	693779.49	8600783.73	423
N13	693777.59	8603410.71	816
N15	693816.68	8606033.08	411
N17	693872.92	8608703.24	409
N19	693919.13	8611345.47	405
N21	693968.86	8613953.69	316
N23	694013.12	8616589.47	809
N25	694057.71	8619224.59	108
P13	691141.01	8603436.51	401
P21	691325.88	8614011.99	486
R1	688357.65	8587193.45	439
R5	688366.57	8592989.13	441

NOTE: TO TRANSLATE THE NAD 83/91 COORDINATE VALUES LISTED ABOVE TO THE CURRENT DATUM REALIZATION OF NAD83(2011) EPOCH 2010.00, SHIFT THE 83/91 POINTS N 10'35'29" E, 0.25'

RECEIVED BY  
 Umatilla County Surveyor  
 Date: 5/18/20  
 Rec'd By: CT  
 No.: 20-043-C

REGISTERED PROFESSIONAL LAND SURVEYOR  
 Jason M. Wells  
 OREGON  
 NOVEMBER 29, 2010  
 JASON M. WELLS  
 54657PLS  
 RENEWS 6/30/20

WELLS SURVEYING  
 200 SE HAILEY SUITE 108  
 P.O. BOX 1696  
 PENDLETON, OR 97801  
 PHONE: (541) 276-6362  
 DATE: 04/20 DR. BY: WRW/JMW  
 CK. BY: JMW NO: 18-1714

PROJECT:  
 SURVEY FOR:  
 UMATILLA COUNTY  
 3920 WESTGATE  
 PENDLETON, OREGON