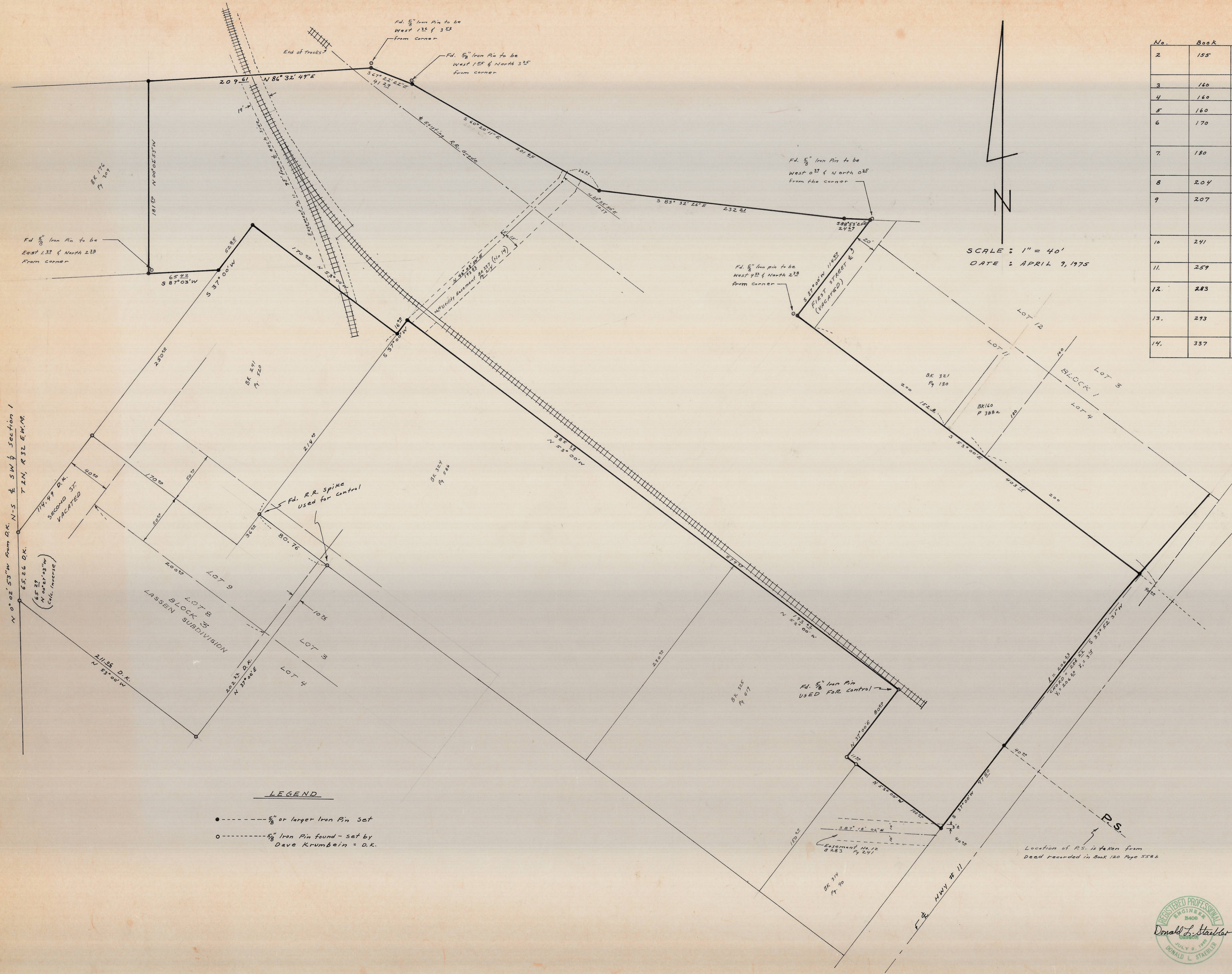


EASEMENTS

No.	Book	PAGE	TO WHOM	TYPE
2	155	162b	Pacific Telephone Telegraph	Blanket easement over and across SE 1/4, SW 1/4, sec 1 T 2N, R 32E.
3	160	261	U. S. A.	It is off the Tract
4	160	262	U. S. A.	It is off the Tract
5	160	277	U. S. A.	It is off the Tract
6	170	354	Pacific Power & Light Co.	Blanket easement over and across Lots 5 & 6, Bk 1 Lassen's Subdivision
7	180	584	Pacific Power & Light Co.	Blanket easement over & across Lot 1, Bk 4 Lassen's Subdivision
8	204	509	Purcell	It is off the Tract
9	207	181	Pacific Power & Light Co.	Blanket easement over & across Lot 5, Bk 1 Lots 1 & 2, Bk 2 Lassen's Subdivision
10	241	520	Union Oil Co.	Blanket easement for R.R. spur line to extend into Property.
11	259	38	O. W. R. & N. G. & U.P. R.R.	Described 19' wide, 95' on each side of a \pm
12	283	241	City of Pendleton	Described \pm , 20' wide 10' on each side. Cuts 3' off S.E. corner of Tract.
13	293	238	U.P. R.R.	Pipe under Track. It is off the Tract
14	337	214	City of Pendleton	Described \pm , 5' on West Side & 15' on east side

SCALE : 1" = 40'
DATE : APRIL 9, 1975



LEGEND

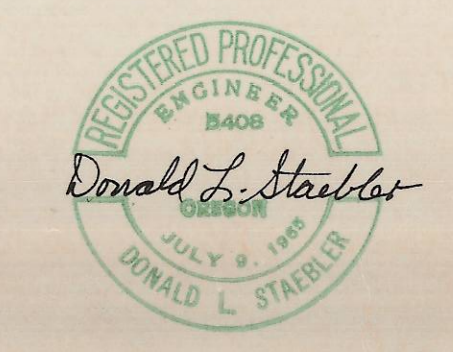
- --- 5/8" or larger Iron Pin Set
- --- 5/8" Iron Pin found - set by Dave Krumbain = D.K.

CIRCULAR CURVE $\frac{1}{4}$
 $D = 50'$
 $R = 1145.92'$
 $\Delta = 79.48'$

SPIRAL $\frac{1}{4}$
 $L = 400'$ P.S. to P.S.
 $S = 10.00'$
 $\omega = 1.25$

TRACT SURVEY FOR
 ROLAND HAERTL RE.
 PROJECT MANAGEMENT INC.
 2187 SW. MAIN ST.
 PORTLAND, OREGON 97205 PH 227-1651
 SCALE : 1" = 40' DATE: APRIL 1975

DONALD L. STAEBLER
 CONSULTING ENGINEER
 P.O. Box 91
 PENDLETON, OREGON 97201
 PH 276-5935



J 129-C