

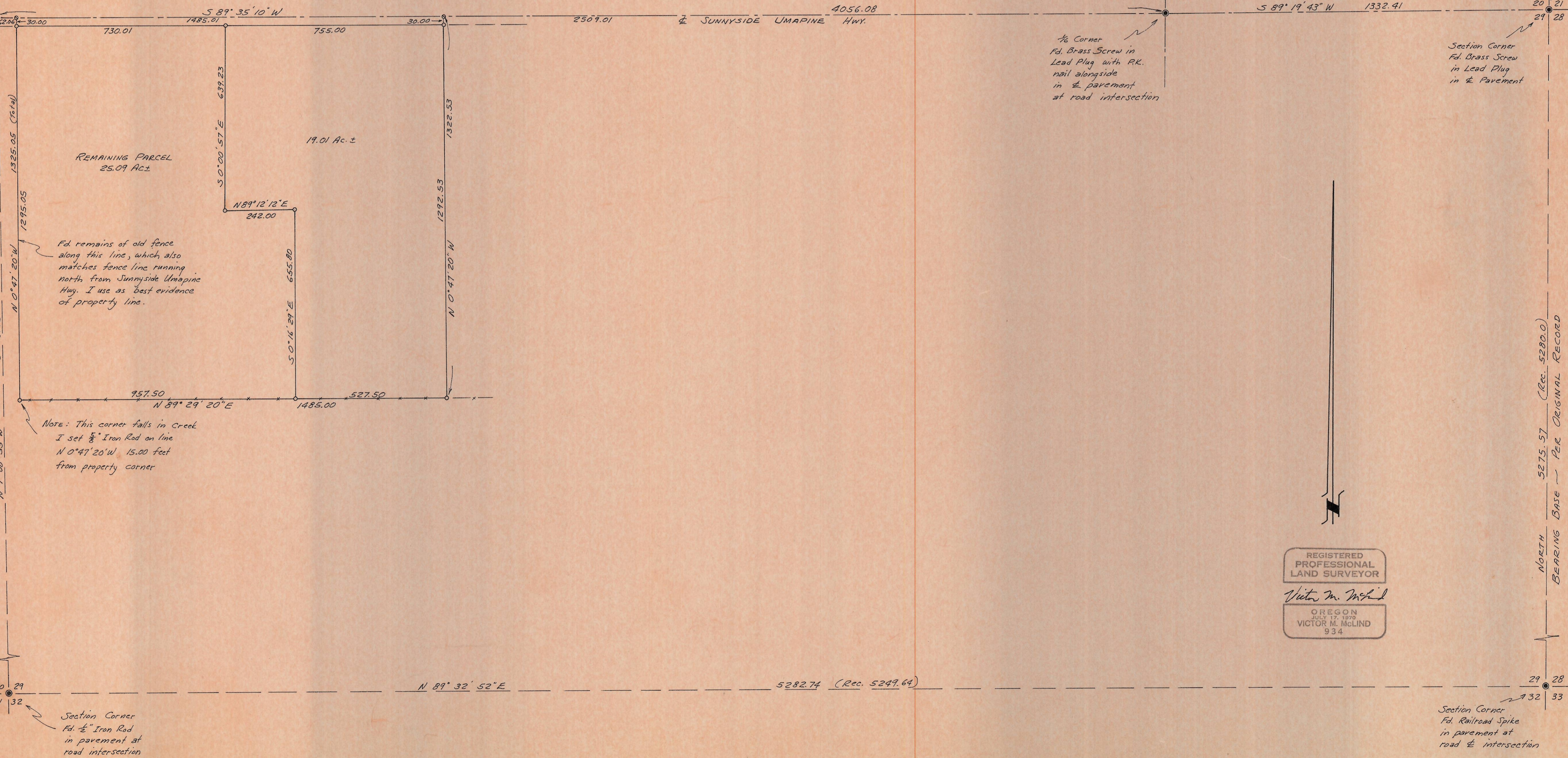
SURVEY TO SET PROPERTY CORNERS
 IN N.W. ¼ SEC. 29, T.6N. R.35E. W.M., UMATILLA COUNTY, ORE.
 Surveyed for Norman & Leta Seibold by Victor M. McLind
 August 1977

Scale: 1" = 200'

LEGEND

- — Indicates Set ½" x 30" Steel Rod (Re-bar) unless otherwise noted
- — Indicates nothing found or set
- — Indicates monument found as noted

Fd ½" Bolt with nut in center
 of large painted yellow "+"
 Apparently set for section corner
 I use for road & control only



Fd remains of old fence
 along this line, which also
 matches fence line running
 north from Sunnyside Umapine
 Hwy. I use as best evidence
 of property line.

Note: This corner falls in creek
 I set ½" Iron Rod on line
 N 0° 47' 20" W 15.00 feet
 from property corner

¼ Corner
 Fd. Brass Screw in
 Lead Plug with P.K.
 nail alongside
 in pavement
 at road intersection

Section Corner
 Fd. Brass Screw
 in Lead Plug
 in pavement



REGISTERED
 PROFESSIONAL
 LAND SURVEYOR
 Victor M. McLind
 OREGON
 JULY 17, 1979
 VICTOR M. McLIND
 934

NORTH
 BEARING BASE — PER ORIGINAL RECORD

Section Corner
 Fd. ½" Iron Rod
 in pavement at
 road intersection

Section Corner
 Fd. Railroad Spike
 in pavement at
 road intersection