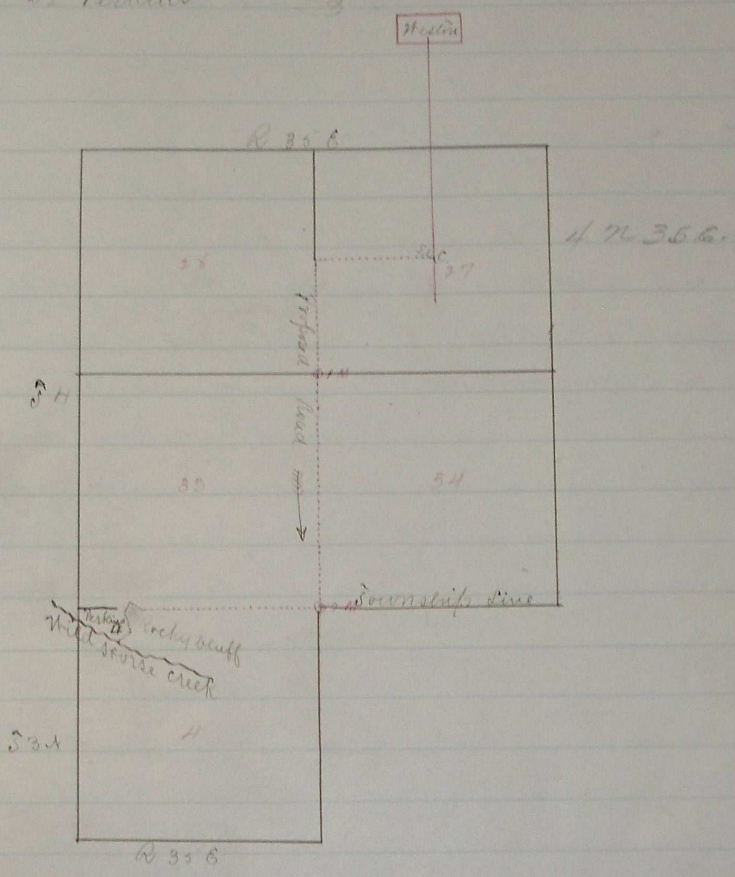


Rd #26

Plot of Road from c.m.s. of Weston  
to Perkins



I certify that the above is a correct plat of the abv. Road surveyed by me from the center of Sec 27 S 34 R 356 to the line of Reservation at Perkins

J. W. Sharow  
as Surveyor

Road granted and located July 5<sup>th</sup> 1873.  
See Co. Court Journal "B" page 356