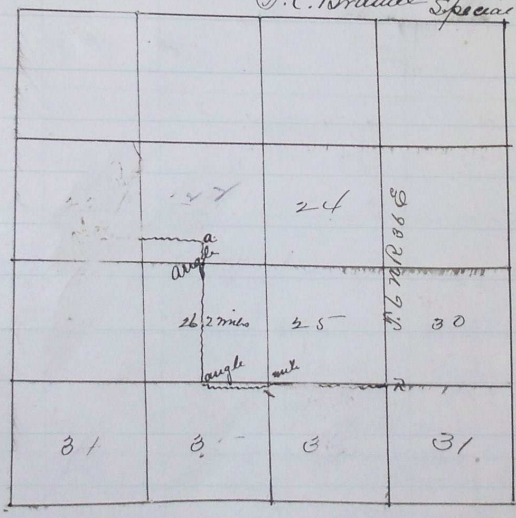


Report. Plat <sup>2</sup>/<sub>3</sub> files notes of  
 to Road. from N.W. Cor of Birchland  
 claim on Milers <sup>2</sup>/<sub>3</sub> Macca Macca Road

Set R. Post of N.W. of 31. S. 6. N.R. 26. E.  
 Run thence

- East 80° Sep mile post 1
- " 40° " " 2
- North 40 " " 2
- " 60 " a "
- East on 20 " Mile " 3
- " " 40 " R " for terminus

3 Miles <sup>2</sup>/<sub>3</sub> 140 chains long  
 J. C. Braune Special Deputy



August 18<sup>th</sup> 1879

This is to certify that we have viewed the Road per Survey Commission  
 at the N.W. Cor Birch Land claim <sup>2</sup>/<sub>3</sub> terminating at Birch Creek <sup>2</sup>/<sub>3</sub> Blue Mountain Road  
<sup>2</sup>/<sub>3</sub> find it a Practicable Road.

J. McKee Journal # 387  
 J. M. Stubblefield

Road located <sup>2</sup>/<sub>3</sub> granted Sept 6<sup>th</sup> 1879  
 Said Sept 4<sup>th</sup> 1879. Recorded Sept 12<sup>th</sup> 1879