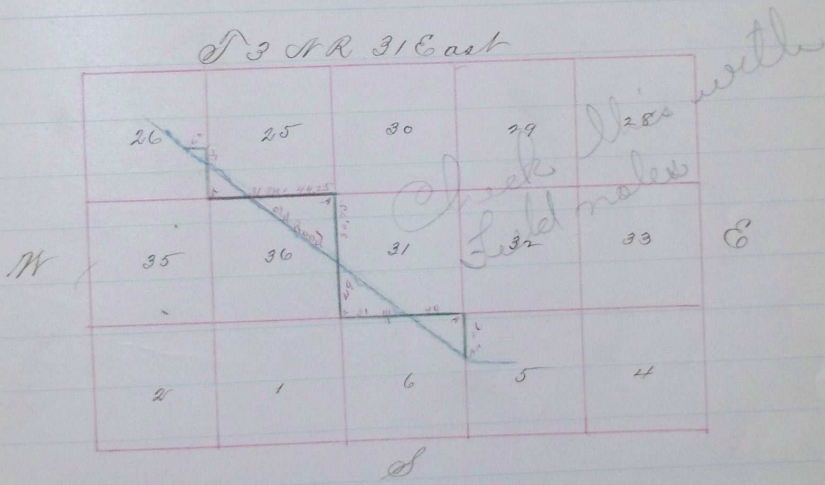


South 30 75 Set post marked "M" II  
 South 119 ch Set post marked "A" x run  
 East 31 ch " " " " "M III x "  
 East 119 ch " " " " "A" x Run  
 South 26 ch Set post marked "R" for terminus of road  
 in edge of County road leading from Swifts to Umatilla as per  
 annexed plat

I hereby certify that the above notes are true and  
 correct as by me taken this 20<sup>th</sup> day of July 1881  
 J. H. Raley Co Surveyor

Plat. of change in county road  
from Swifts Station to Umatilla City



Journal E page 364