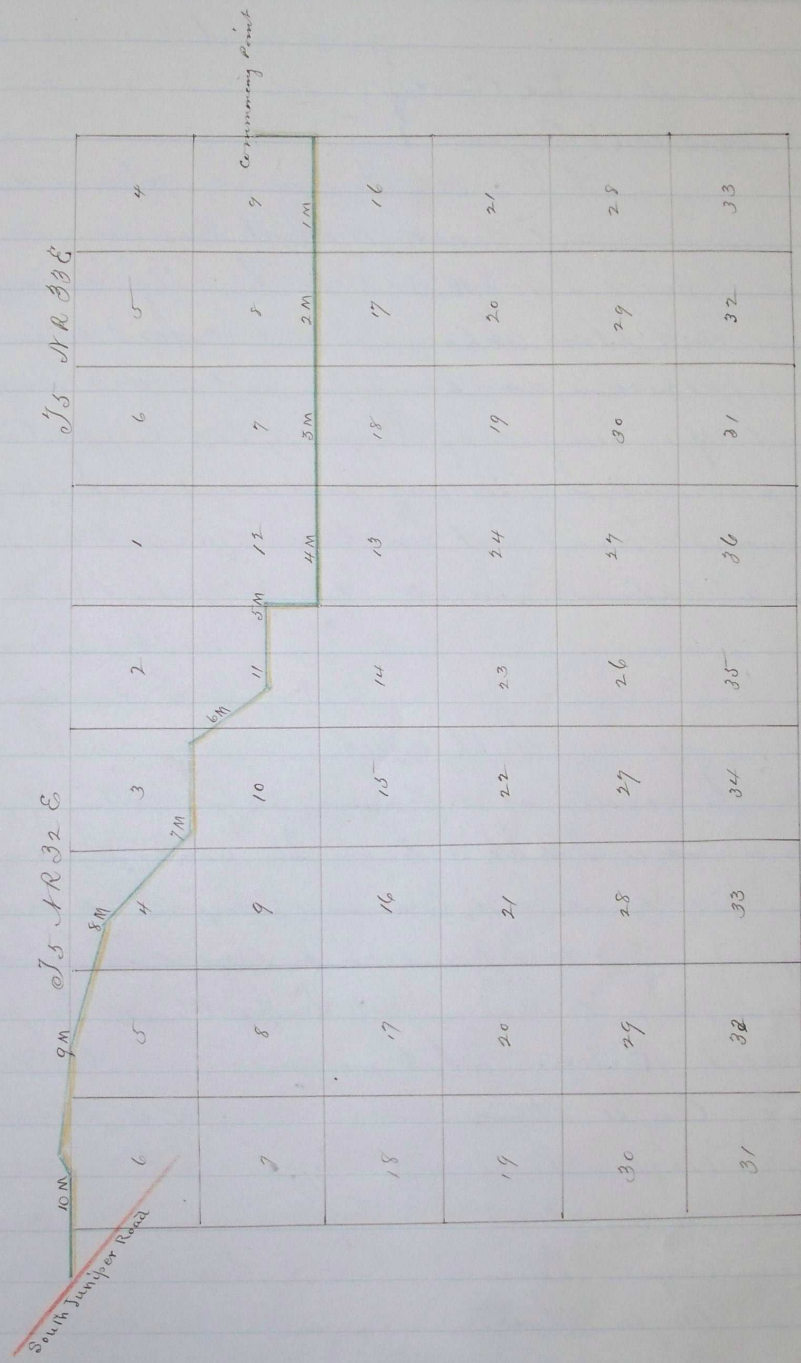


328



I hereby certify that the within is a correct survey, and the above is a correct plat of Road leading from the N.E. corner of S 34 Sec 9 T5 NR 33 E to South Juniper Canyon to the forks of said canyon.

August 7th 1887
 Marked Adam Rockwell
 Chairman J. D. Snow, & A. J. Long

A. L. Coffey County Surveyor Umatilla
 County Oregon
 for J. M. Coffey deputy.

Four E page 477
 & " 553