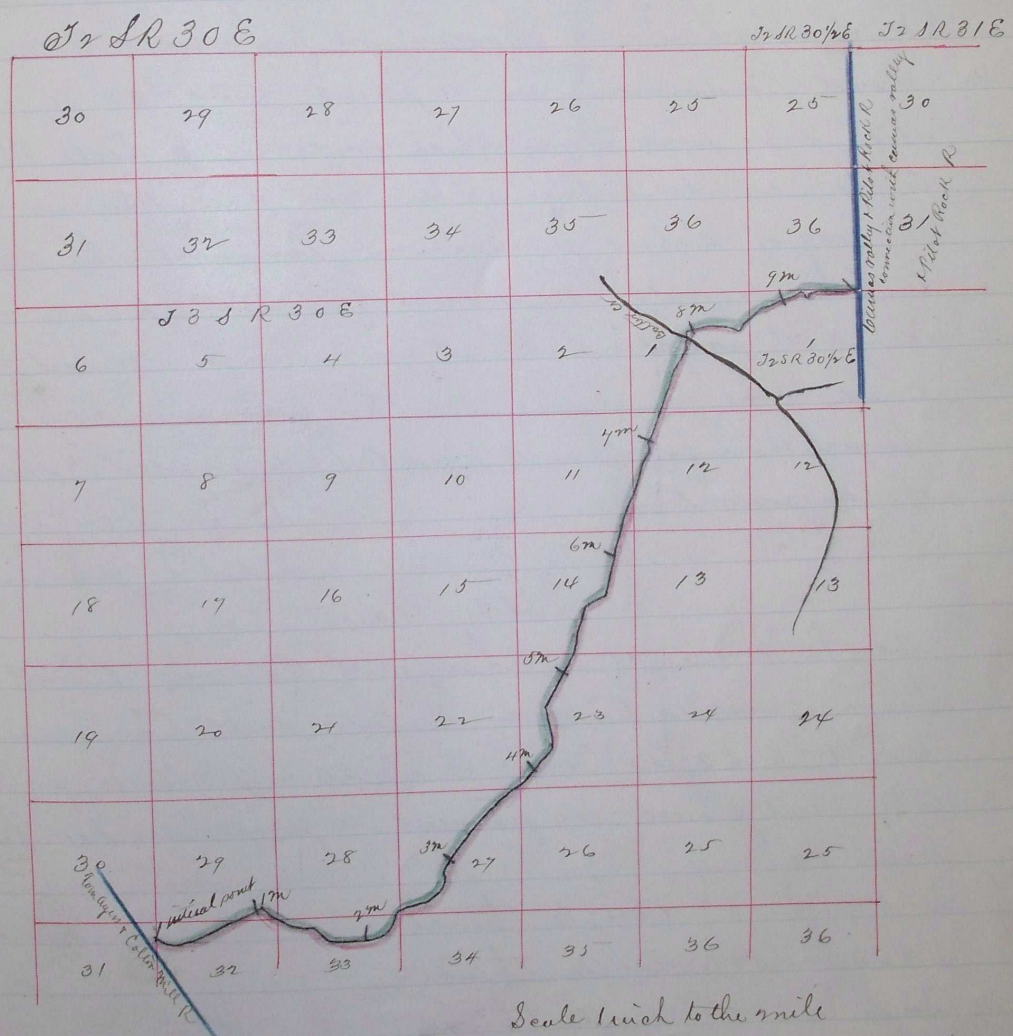


1148 E 35.00 1/4 Sec Corner Angle chance
 East 75.40 Interest Town Corner S 2 S R 31 E is being SW
 corner to Paid Town and Road leading from Gamas Valley to
 Pilot Rock and planted post marked R

I hereby certify that the above is a true and correct
 plat and return of the survey of the above named Road
 A L Coffey Corner Surveyor
 of Umatilla Co Oregon

James Meaus } Chairman
 John J Patterson }
 Wm Riechart Marker

This Aug 24th 1882



Journal page 479
 " " " 552