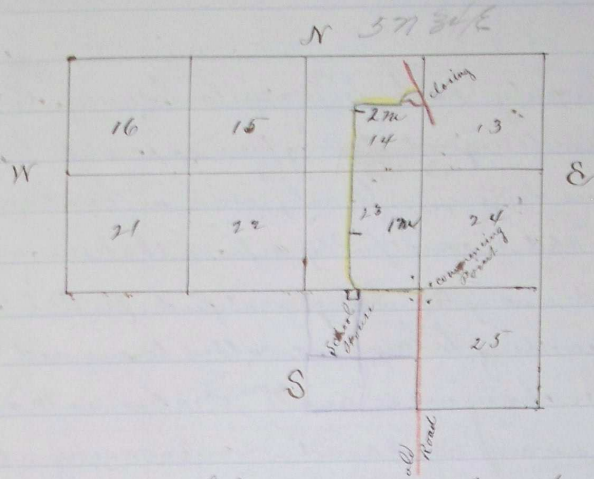


Plat of Survey



Journal E. 501 I hereby certify that the within is a true and
 " E 554 correct survey and plat of Road 710 130
 " E 561 This 24th day of May 1853
 " E 640 A L Coffey
 " F 64 County Surveyor Multnomah County, Oregon

Recorded July 28 1853
 J P Bushee
 Clerk