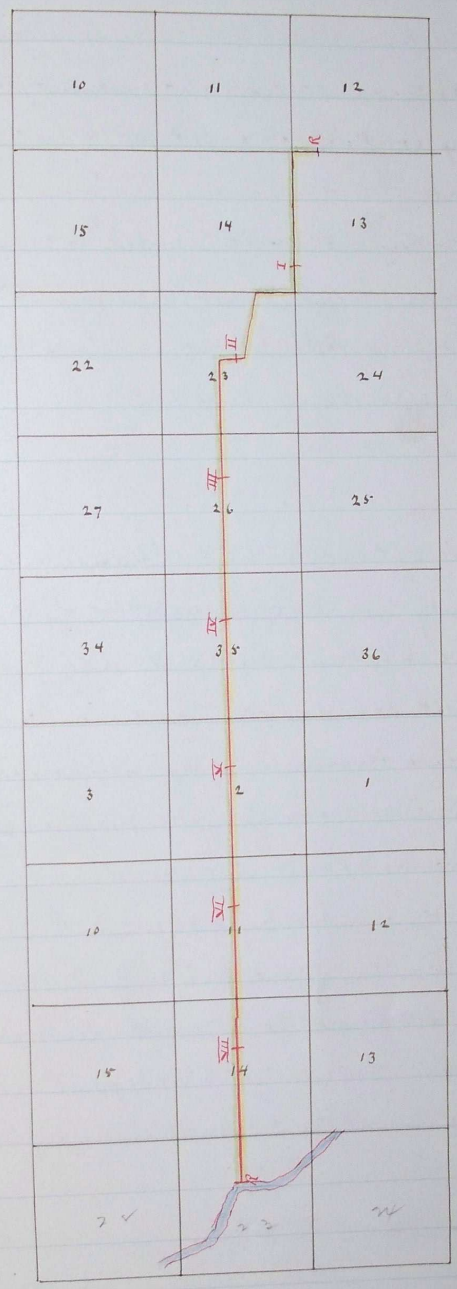


Plat of Road from a point between  
Secs 12 & 13 T<sub>4</sub>N. R 33E to Wild Horse Creek

ow a  
and  
between  
N.  
after  
investigate  
and the



R for  
correct

Journal E. page 199

" E " 365

Recorded May 13<sup>th</sup> 1884

J.P. Busher

Clerk

Box No 40.