

from
926

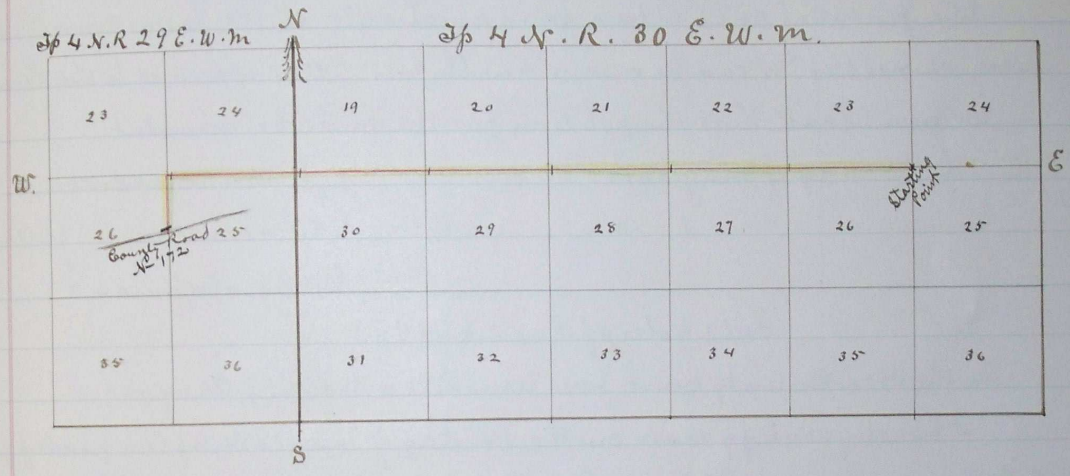
to a Road
County

business
men
in the
County
County

dingers
Viewers,
County

Mid. R.
Run
West
line
in Sec
25.
corner
e 26,

Plat of Road No 199.



"Scale 1 inch to the mile"

Journal "F" page 379
" " " " 450

I hereby certify this to be a true plat
of Road Survey No 199
Surveyed June 3rd 1884
By W. W. Caviness

Recorded Aug 19th 1884

J.P. Bushee
Clerk