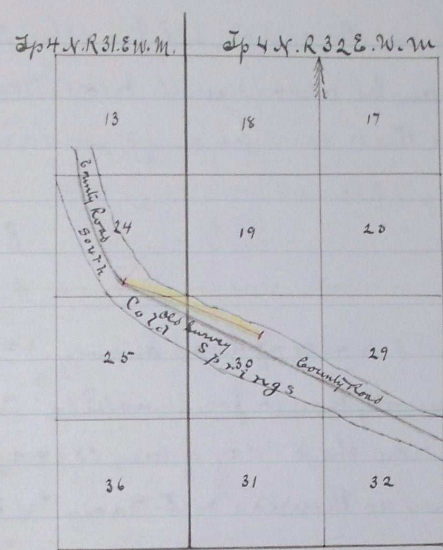


Plat of Road No 202.



"Scale 1 inch to the mile"

A true Plat of Road No 202

Surveyed May 15th 1884.

By W. W. Caviness.

Journal "F" page 401

" " " " 456

Recorded Aug 19th 1884

J. P. Bushlee

clerk.

in a
a
Caviness
The
ounty
fast
as
rles
allor
bove
est
mile.