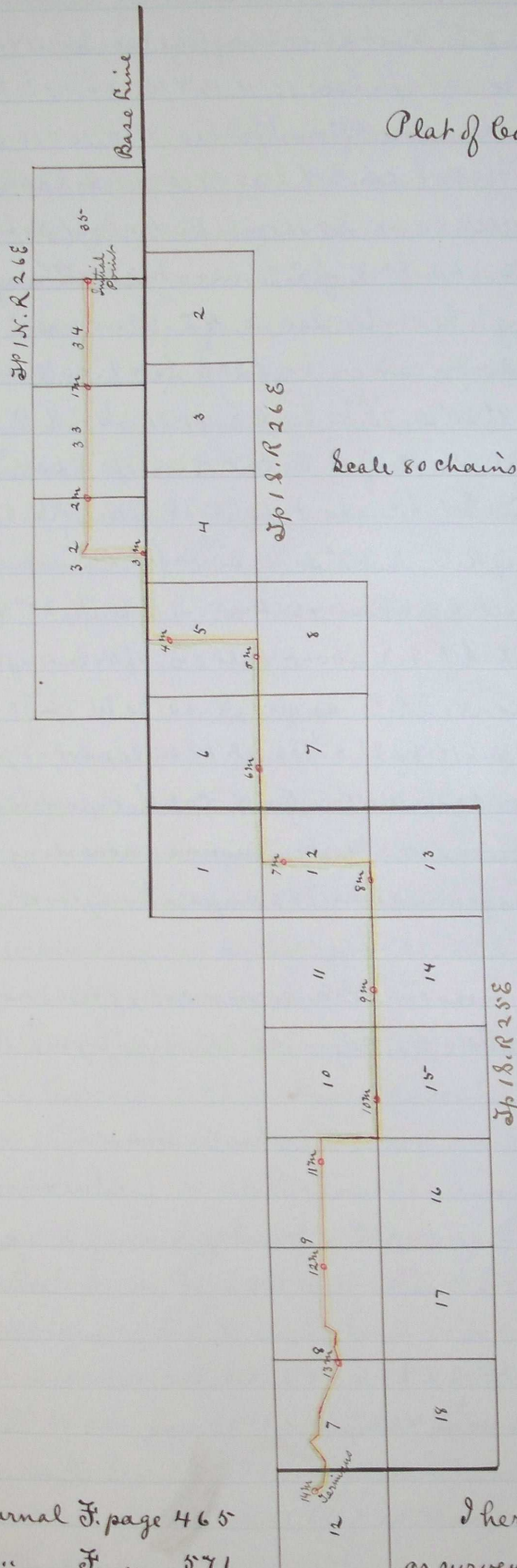


Plat of County Road No 224.



Scale 80 chains to 1 inch

Journal F. page 465
 .. F. .. 571
 Recorded Sept 16th 1884
 J.P. Bush
 Clerk

Sp 18. R 24 E.

I hereby certify that County Road No 224
 as surveyed by me Aug 15th to 18th 1884 is correctly
 represented in the following plat:
 Jno C. Arnold
 Surveyor.