

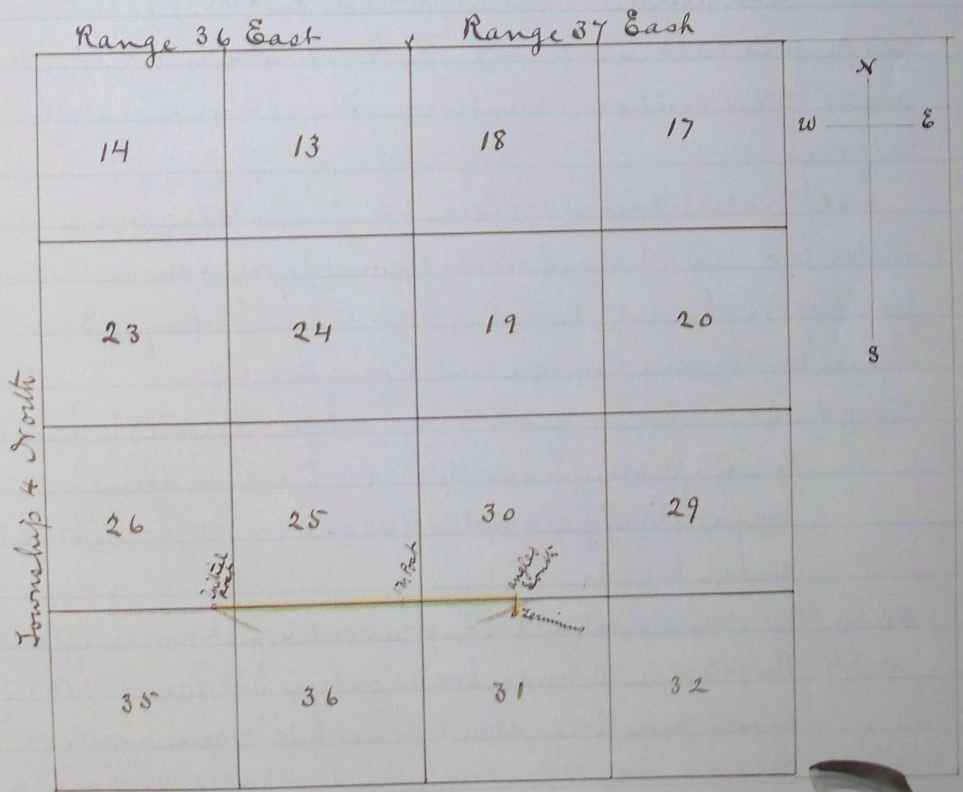
The line passes through occasional forests of pine and fir and is blazed and otherwise marked as per law for laying out roads, although departing from the true section lines as specified in the foregoing notes no marks are made outside of road limits from true section lines.

I hereby certify the foregoing field notes of the survey of Road No. 276 to be correct.

Jno C. Arnold,
County Surveyor

I hereby certify the following to be a correct plat of the survey of County road 276 in Township 4 N Range 36 & 37 East of Willamette Meridian, as made by me November 16th 1886

Jno C. Arnold
Surveyor for Umatilla County, Oregon



Journal 9, page 395
" 9 " 471

Recorded March 18th 1887
G. A. Hartman, Clerk
By J. H. Parkes, Deputy