

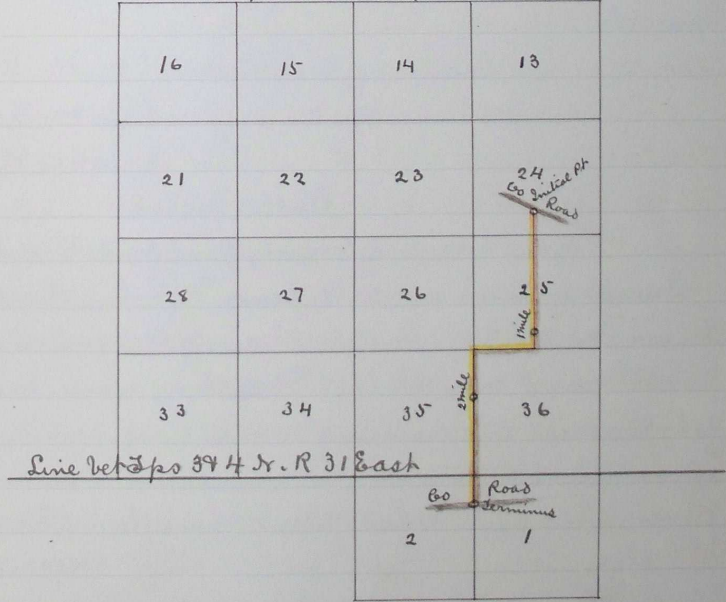
ly Road  
& ans  
ion.  
ort that we  
rnolds Co.  
ably to your  
ines through-  
is also in  
be of great  
will be com-  
re, recom-  
2 be granted.  
Road 312  
Co. are for.

80.00 Set 2 mile post 20 links W. in wheat field.  
12.72 1/4 S. Cor. bet. Secs 35 & 36. (this proves the reputed line bet. 35 & 36 to be the true line) Set 4 on post in fence cor. 40 links W. of Pt. <sup>quo</sup> Turn S. 15' R. along line bet. Secs 35 & 36; Ascend  
bouth 22.50 Summit; Descend  
30.60 Ravine S.W; Ascend -60'  
43.50 Summit; Descend  
53.85 Cor for Secs 35 & 36 on line bet. Tps 374 N. R 31 E.  
71.50 Ravine, course S.W.; Ascend -8'  
73.00 Summit. Descend  
75.60 Intersect Road in N. Despain or Missouri Gulch, course about E & W, I set terminus 40 links N. <sup>quo</sup> 30 links W. of Pt. at foot of hill on N. side of said gulch. All the posts & stakes were of the size <sup>quo</sup> marked <sup>quo</sup> mounded in accord with the law governing in such cases.

I hereby certify that the foregoing notes of the survey of County Road No. 312 for Umatilla Co. Ar. are correct.  
Jno. C. Arnold, Co. Surveyor.

Plat of Road Survey N<sup>o</sup> 312

Township 4 N. Range 31 E. W. M.



I hereby certify the accompanying plat of County Road Survey No. 312 for Umatilla Co. Ar. is correct.

Jno. C. Arnold, Co. Surveyor

Journal N. page 12  
.. H. .. 96  
Road granted July 11 1888  
Recorded Oct 12 1888  
G. A. Hartman  
County Clerk  
By J. H. Parkes, Deputy.

o No 312.  
t in chaining  
in such  
m. I measure  
tial post  
purporting  
scribed; the  
var. 21°  
+ 50'  
- 8'  
+ 60'  
9° 45' R. along  
95° L along  
- 8'