

Sec 2 or 3
E. 30 E.
distance
or true
3 or 34 T. 3

I hereby certify the following to be a correct plat of Road Survey
No. 314 for Umatilla County, Oregon. Jno. C. Arnold, Co. Sur.
Township No 3 N Range 30 E. W. M.

ad, No. 288,

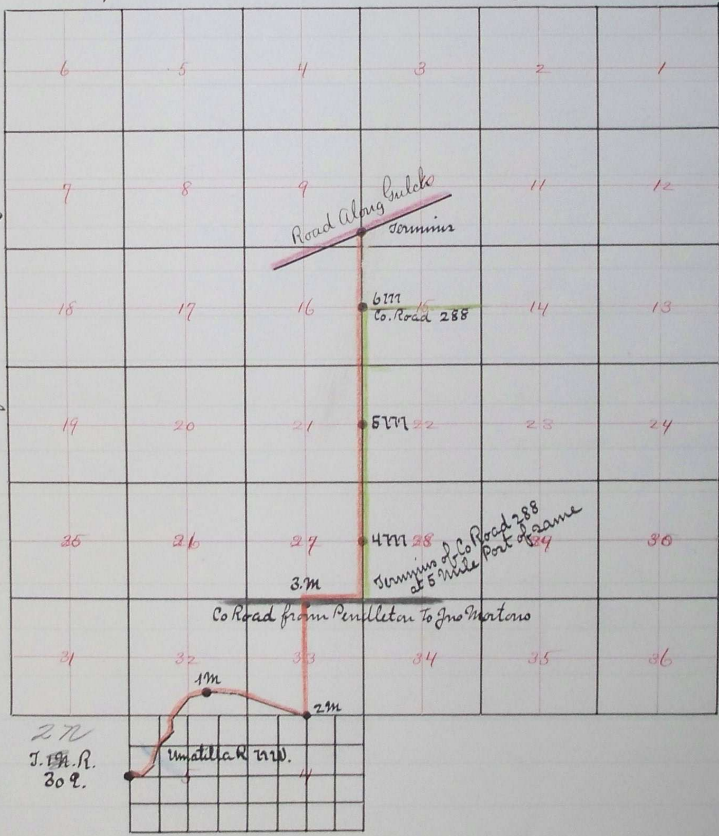
at this
ie bet.

mounds

rad No. 314

nn.

Plat of Road Survey No. 314



Filed Jan. 5th 1889
G. A. Hartman Clerk
⁹²