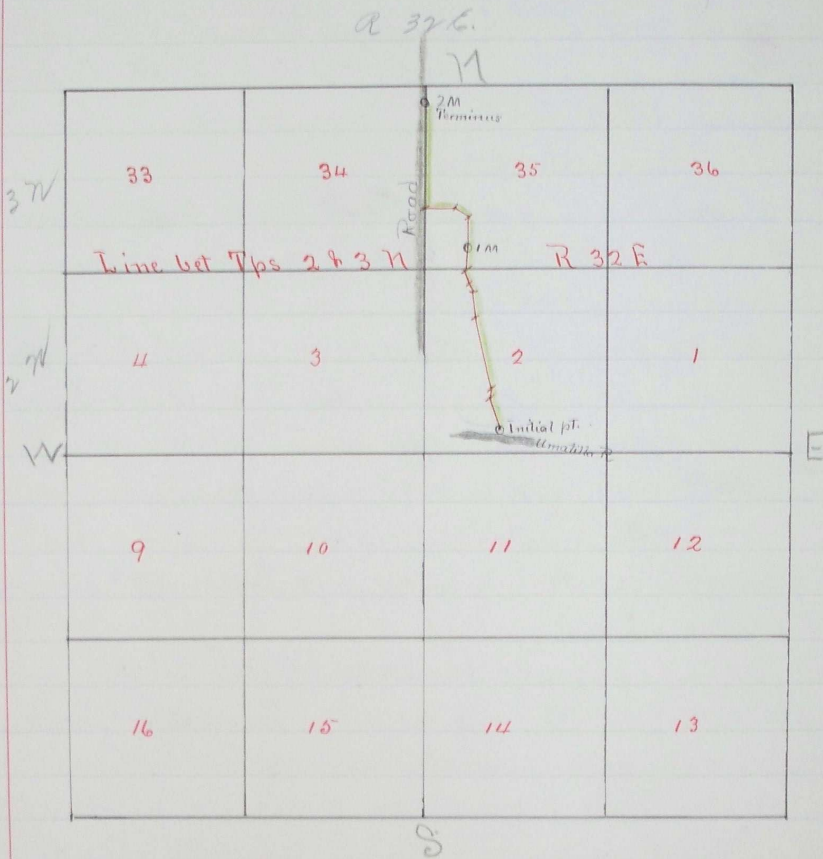


I hereby Certify the following to be a correct plat of the No 333 Road
 Survey Townships 2 & 3 Range 32 East of Willamette Meridian, as made
 by me April 21st 1890

Jno C Arnold
 Surveyor for Matilla County Oregon.



Filed May 7 - 1890
 G. A. Hartman Clerk

ROAD NO
 333

Report
 of a
 Corn
 Section
 Corner
 Section
 or be
 Willa
 mty

To the Ho
 Umate
 road I
 report
 at the
 the sav
 We pro
 describ
 rick an
 We fir
 out an
 believe
 at a ve
 much n
 vacinit
 mend t
 road.
 Witness
 1890.

Filed Ma
 G. A. Hartma
 Filed m. Tuo
 I must fu
 specified in
 No 333. A
 view