

alled  
and mark  
aw, with  
ees 479

ust fence

post and

I cut  
u along  
ec 33

8  
n line

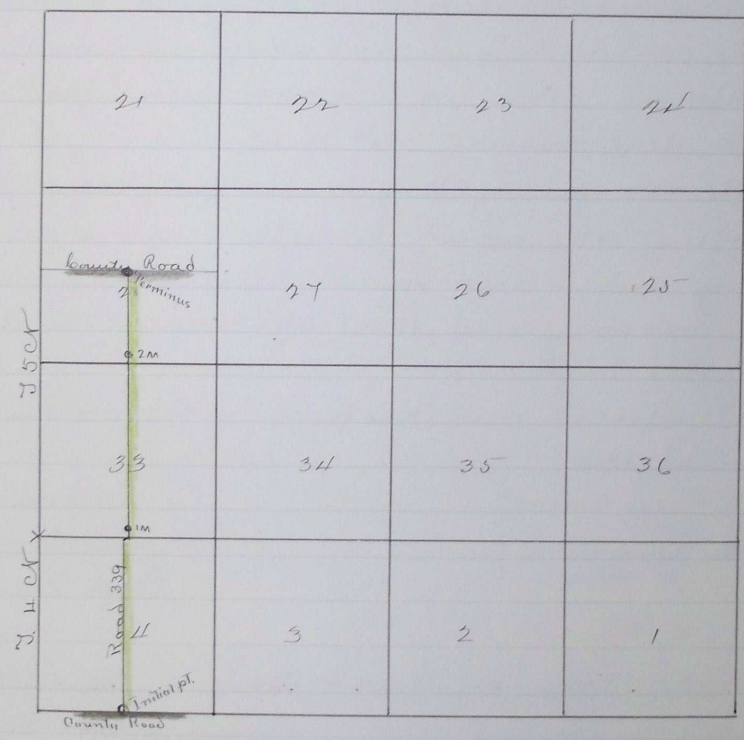
correct  
7 for

veyor.

I hereby certify the following to be a correct plat of survey  
of Road 339 Townships 475E Range 33 East of Willamette  
Meridian, as made by me June 23<sup>rd</sup> 1890

Jno Arnold  
Surveyor for Umatilla County, Or

57N 33



Filed July 9-1890 }  
Wm Pierce Clerk  
C.R.D.

Sept 8 1890 94 600