

857 | made small stone md., West of traveled road and true R 2° 56' 13"
 950 | Summit.
 1297 | set terminus on line.

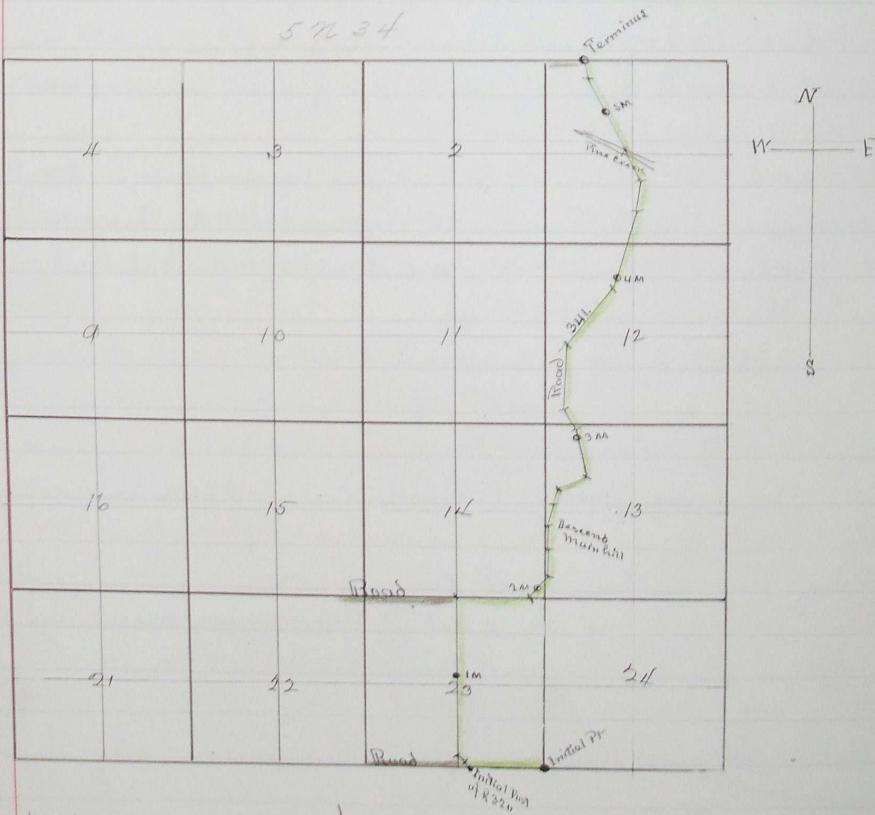
ROAD NO
327.

I hereby certify the foregoing to be the correct
 field notes of Road Survey No 341 for Multnomah County, Oregon
 Jno C Arnold Surveyor.

Filed July 9, 1890 }
 Wm. Pierce Clerk }
 C.R.D.

I hereby certify that the following to be a correct plat
 of the survey of Road 341 Township 5N Range 3E East
 of Willamette Meridian as made by me June 24 & 25 1890
 Jno C Arnold
 Surveyor for Multnomah
 County Oregon

5N 3E



Filed July 9, 1890 }
 Wm. Pierce Clerk }
 C.R.D.

July 16 1890 H 576