

901 Oct. 12th 1891.

Shutrum
Scott and
Gurley
cut R.O.
on E side of
crossing
Center

a. 22°-30' E)
- bridged.

line.
n of line

outh on
ed on E face

27 on
nd
e of R. 368
oads.

ad in line.

S 35°-30' W | 9.80 Center of slough, at right angles with line, bridged 43 links,
S 35°-30' W | 17.56 N. end of bridge across Umatilla River 9 cut R on N + E sides
of the first post in the N. end of railing to bridge on W side
thereof for terminus of R 374.

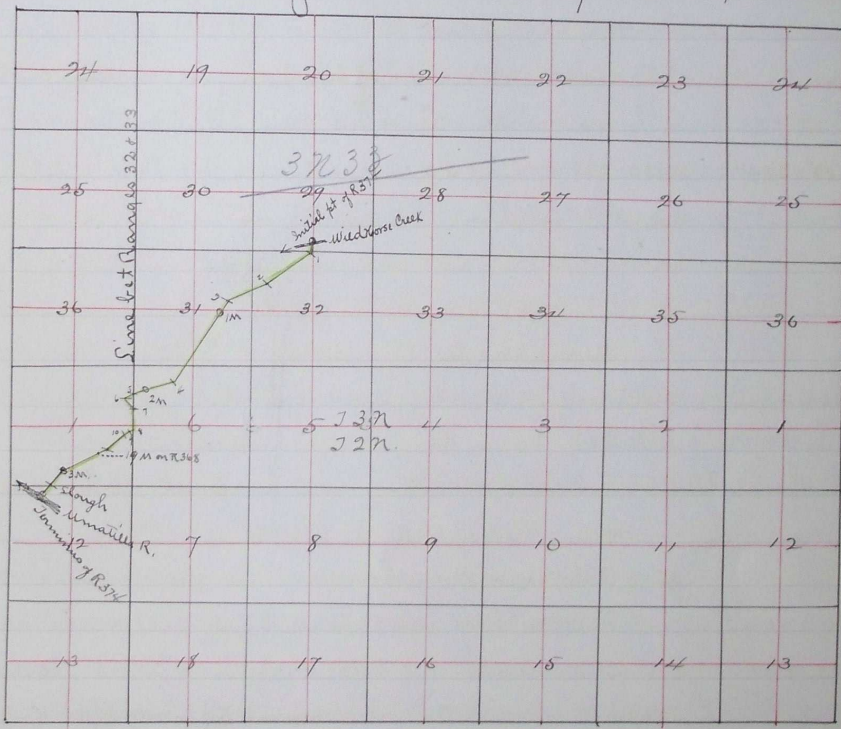
Tuesday Oct. 13th 1891.

I hereby certify that the foregoing are the correct notes for
R. Survey No 374 for Umatilla County, Oregon.

Jno. C. Arnold Surveyor.

Filed Nov. 2 1891
W. M. Pierce Clerk
By J. E. Beam Deputy.

Plat of Road Survey No. 374



I hereby certify that the foregoing is an accurate
plat of Road Survey No 374 for Umatilla County,
Oregon,

Filed Nov. 2 1891
W. M. Pierce Clerk
By J. E. Beam Deputy

Jno. C. Arnold
County Surveyor.

J 74