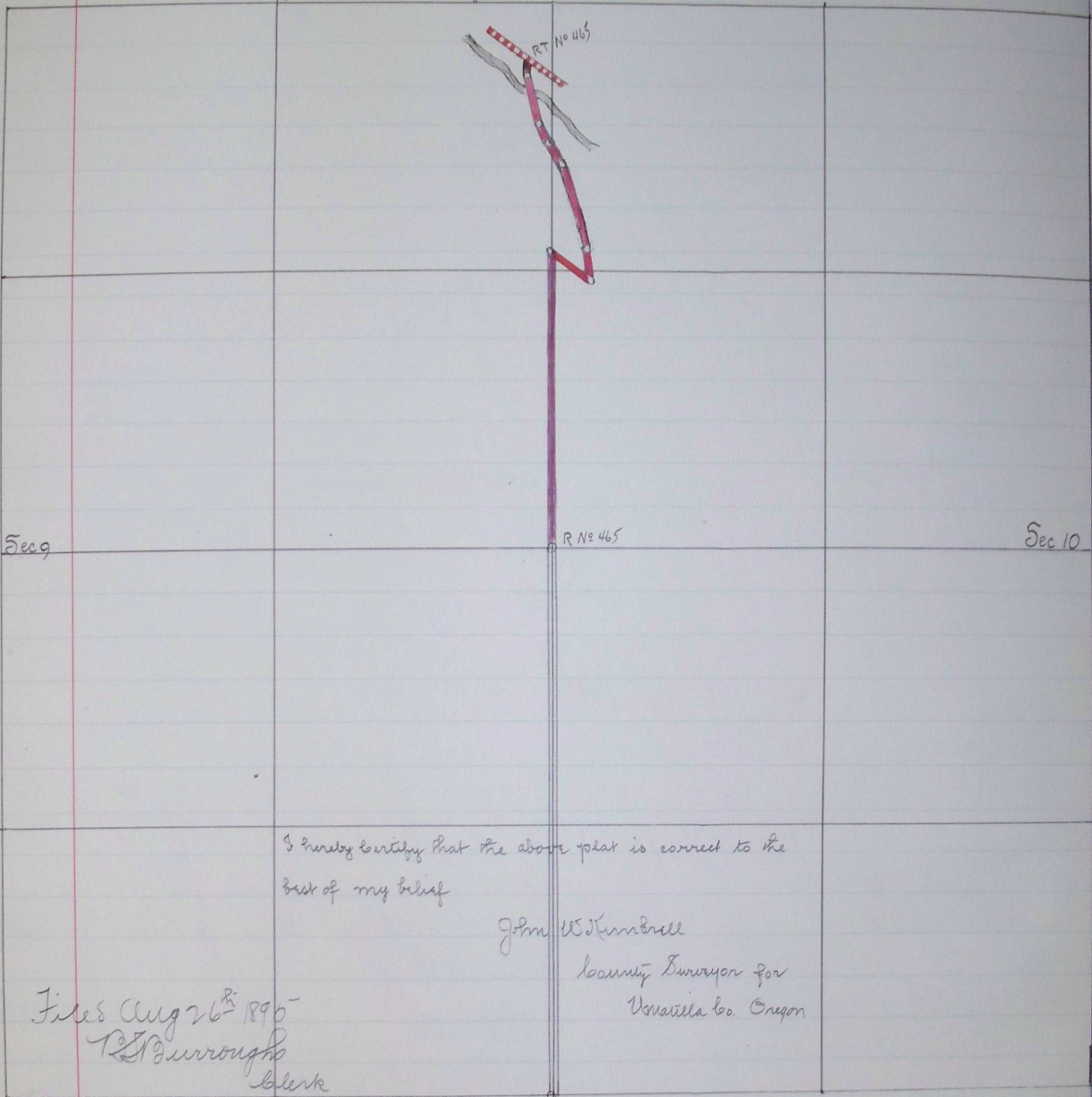


Road No 465

T 5 South. Range 32 East W M.



I hereby certify that the above plat is correct to the best of my belief

John W. Kimbrell  
County Surveyor for  
Wasilla Co. Oregon

Filed Aug 26<sup>th</sup> 1895  
T. J. Burroughs  
Clerk

Filed Aug 18

Feb 6 1895 415

ROAD No 467