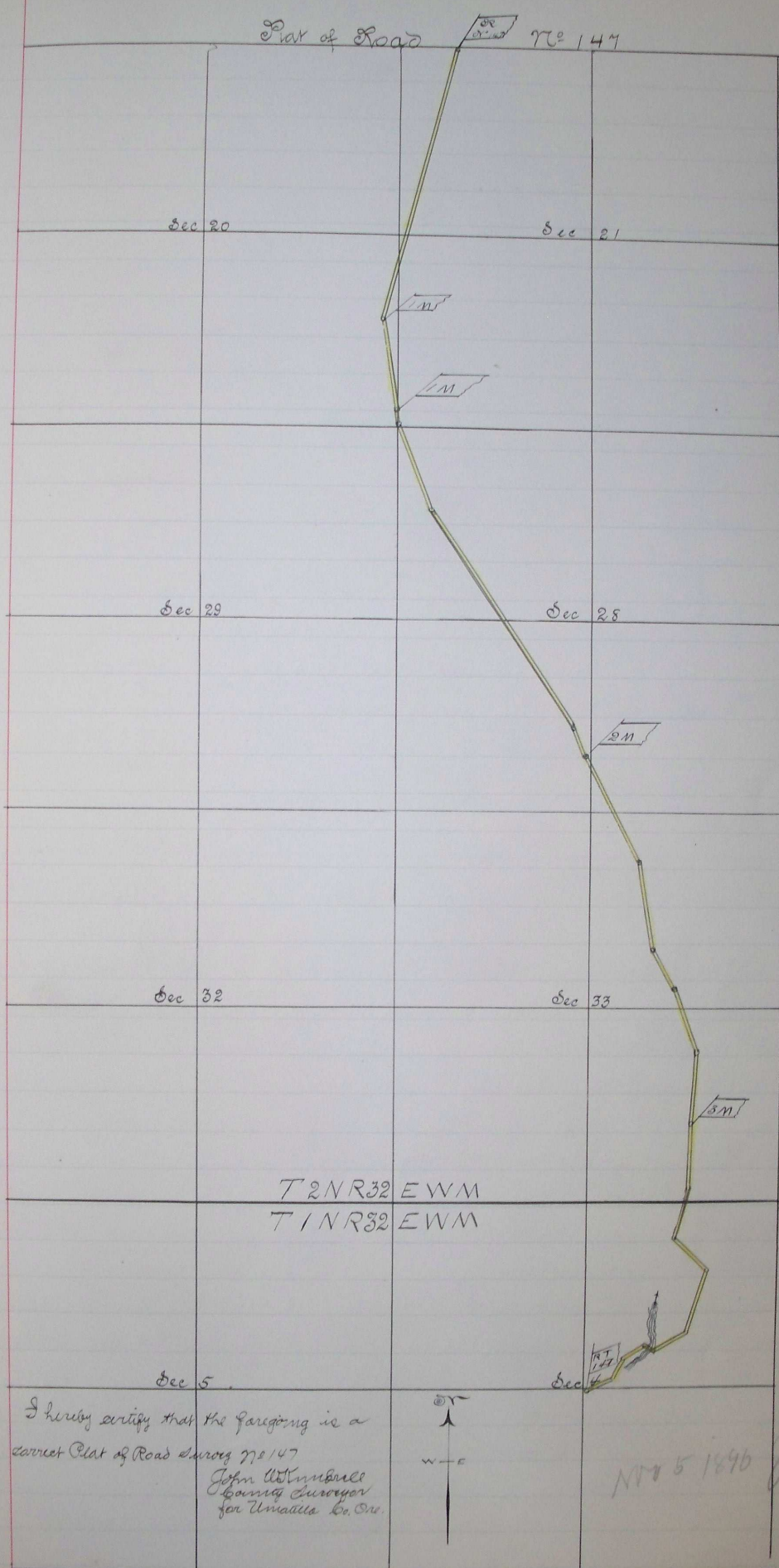


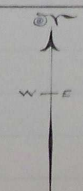
and 6A  
the wire  
W corner  
4 inches  
Dug pits  
feet wide

center sec-  
rights square  
dug pits  
feet wide

field notes  
Surveyor  
Oregon



I hereby certify that the foregoing is a  
correct Plat of Road Survey No. 147  
John W. Umbrell  
County Surveyor  
for Umatilla Co. Ore.



NR 5 1896 621