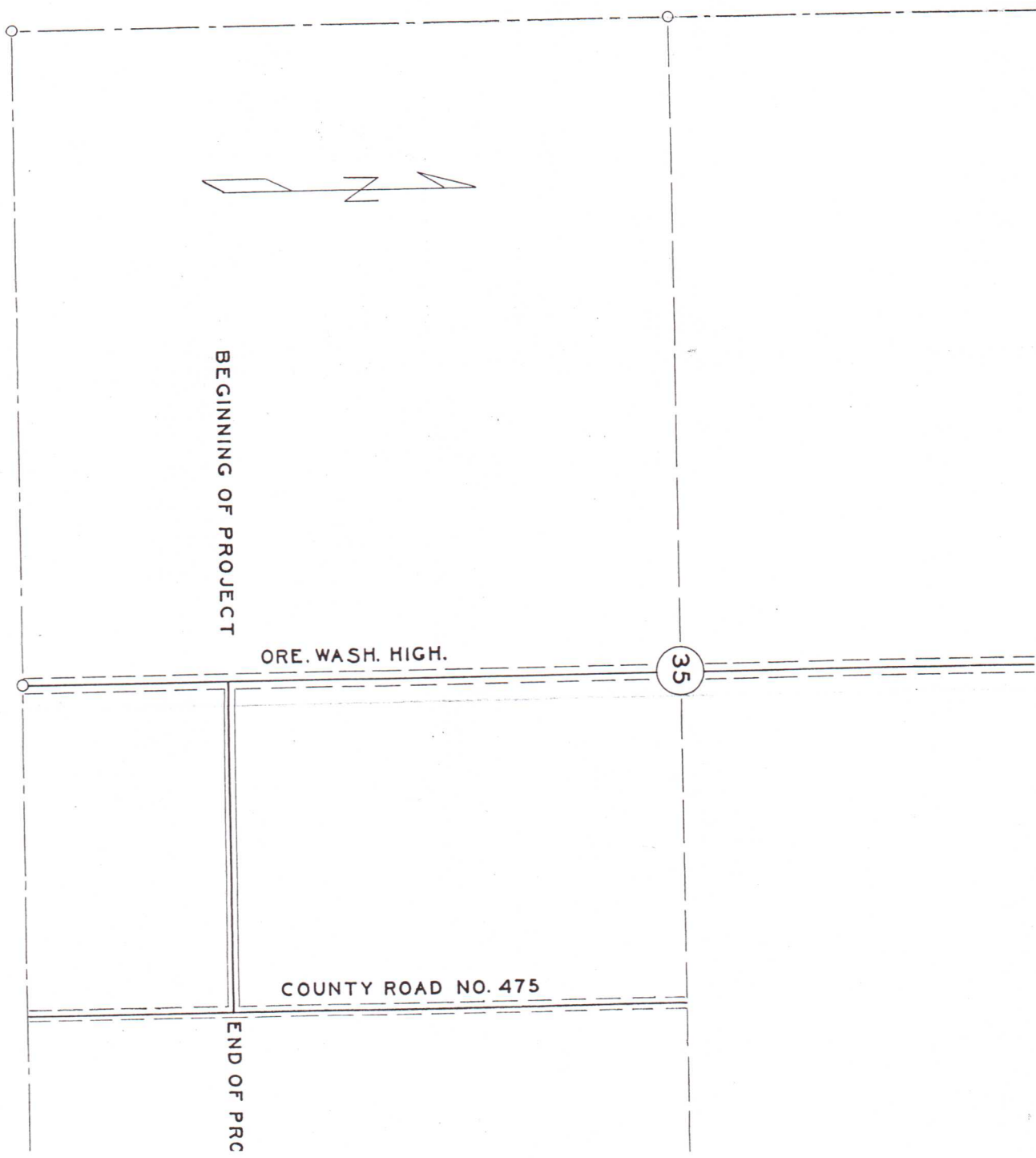


MATILLA COUNTY OREGON
COUNTY ENGINEERS OFFICE
COUNTY ROAD NO. 841
ALEIIN= 400FT. T 6N. R 35. E. W. M.



BEGINNING OF PROJECT

ORE. WASH. HIGH.

35

COUNTY ROAD NO. 475

END OF PRC