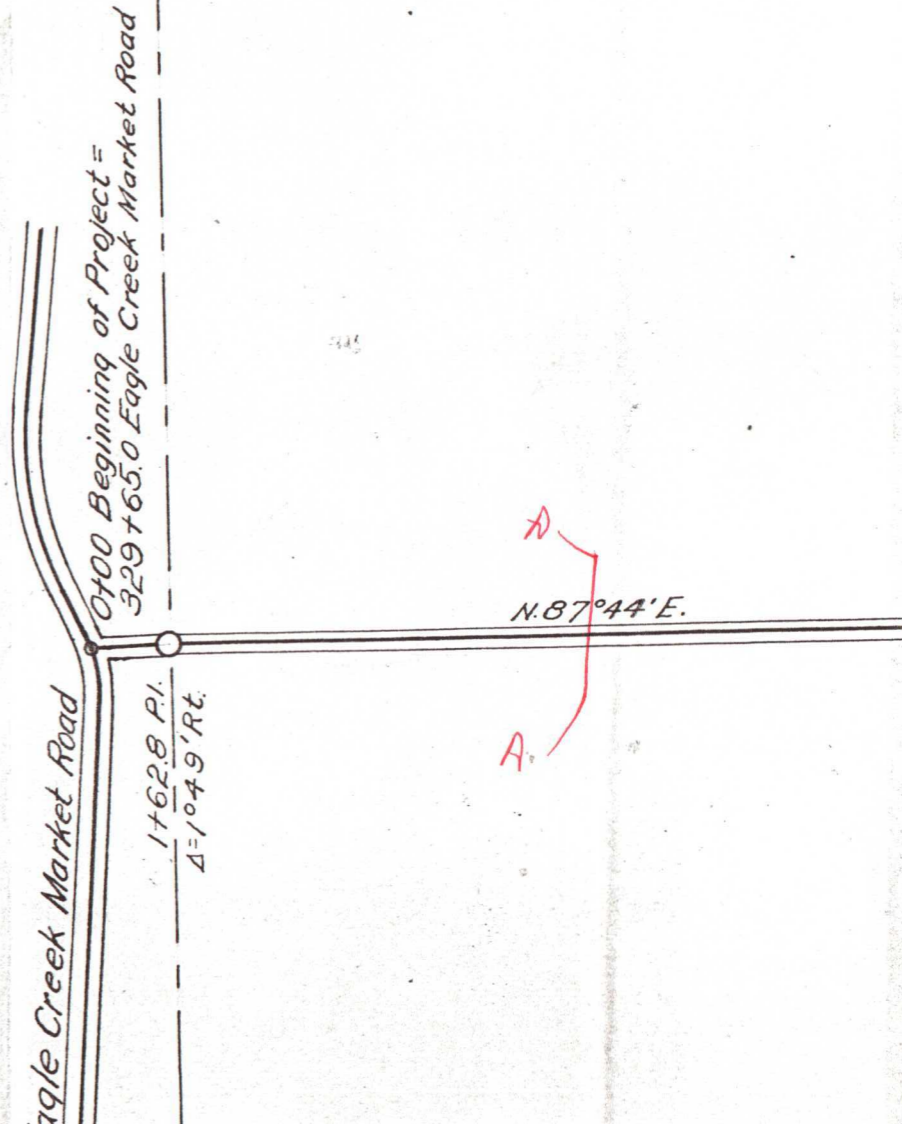


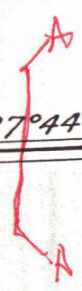
UMATILLA COUNTY OREGON
COUNTY ENGINEER'S OFFICE
COUNTY ROAD NO.

SCALE 1 IN. = 400 FT. SEPT. 1927



15

N. 87° 44' E.



19+61.9 P.C.

22+78.2 P.T.

S. 60° 38' E.

10° C.R.
Δ = 31° 38'

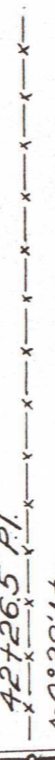
25+89.0 P.C.
27+81.1 P.T.
56° C.L.
Δ = 107° 34'

28+06.0 P.C.
30+79.0 P.T.
28° C.R. Δ = 76° 26'

P.O.S.T.

N. 88° 14' E.

42+265 P.I.
Δ = 0° 28' 11"



N. 87° 46'





$N.87^{\circ}46'E.$

687.496 Ft.
 $\Delta=0^{\circ}22'Lt.$

$N.87^{\circ}24'E.$

817.462 Ft.
 $\Delta=0^{\circ}19'Rt.$

$N.87^{\circ}43'E.$

Pipe Found

Pipe Found

B

C

1067
5108
567

13



Pipe Found

N. 1°40' W.

106+918 P.C.
108+514 P.T.
56° C.L. Δ=89°23'

Pipe Found

119+727 P.C.
123+662 P.T.
20° C.R. Δ=78°42'

N. 77°02' E.

140+543 P.C.
4° C.R. Δ=13°48'

143+993 P.T.

S. 89°10' E.

43' E.

c
c

D
D

S. 89°10'E.
D
D

89°36'.
176+78.6 P.O.T.

4640'.
177+490 P.C.

2° C.R.
Δ=6°02'

180+507 P.T.

S. 83°08'E.

4° C.R.
Δ=9°06'

194+556 P.C.

4° C.L.
Δ=13°11'

197+852 P.T.

S. 74°02'E.

188+860 P.C.

191+135 P.T.

S. 87°13'E.

202+363 P.O.T.
End of Project

93°41'.
1525

Pipe Found

T. 3 N., R. 35 E.
T. 3 N., R. 36 E.

Pipe Found

