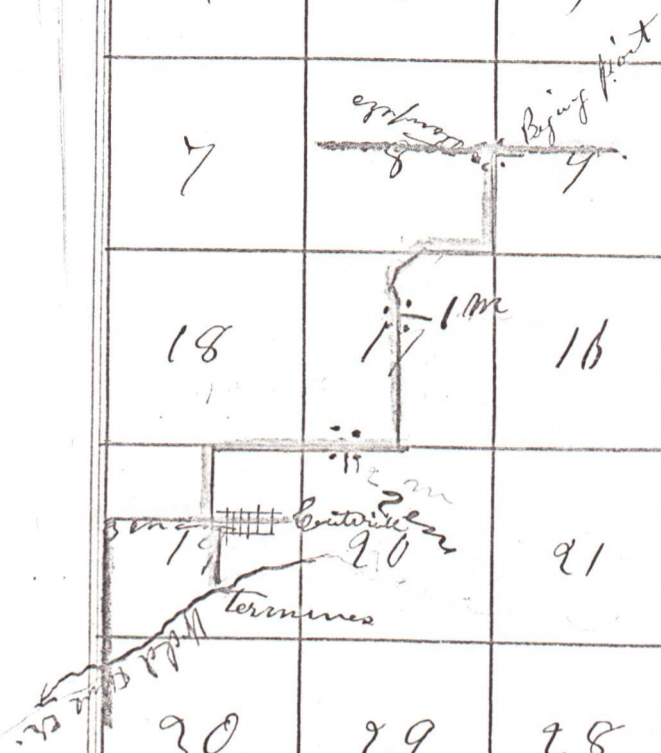


162

T. 4 N. R. 35 E.

6	5	4	3	2	1
7	8	9	10	11	12
18	17	16	15	14	13
19	20	21	22	23	24
30	29	28	27	26	25
31	32	33	34	35	36



I hereby certify that the above is a true and correct plat and survey of the above Road No. 162 this 10th day of August 1883
 A. S. Coffey
 County Surveyor of
 Washtenaw County Oregon