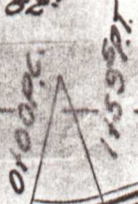


20°CL.  
Δ31°58'  
T 82'



4173' P.C.  
6180' P.T.  
20°CR.  
Δ31°25' R1  
T 80'

11165' P.C.  
19146' P.T.  
14132' P.C.  
15182' P.T.  
15196' Mead

1°CR.  
Δ2°01'  
T 100'

12°CR.  
Δ18°05'  
T 76'

4°CL.  
Δ25°29'  
T 92'  
22187' P.C.  
24131' P.T.  
24131' P.O.T.

26121' P.C.  
28146' P.T.

6°CL.  
Δ13°27'  
T 112'



W.A.M. Corkle

PLAT OF PROPOSED HIGHWAY  
ON REED + HAWLEY MTS.  
T.W. 3 N. Rg. 36 E.V. 17. Scale 1" = 400 FT  
July 1933 County Road No. 905

6° Cl.  
13° 27'  
112°



6° Cl.  
Δ 19° 45'  
T 166°



28146' P.T.  
A

34162' P.C.

37437' P.T.

39183' P.C.

43112' P.T.

45108' P.C.

46191' P.T.

53117' P.C.  
B

55151' P.T.

57106' P.C.

62139' P.C.

William Johnson  
2° Cl.  
Δ 5° 30'  
T 137°

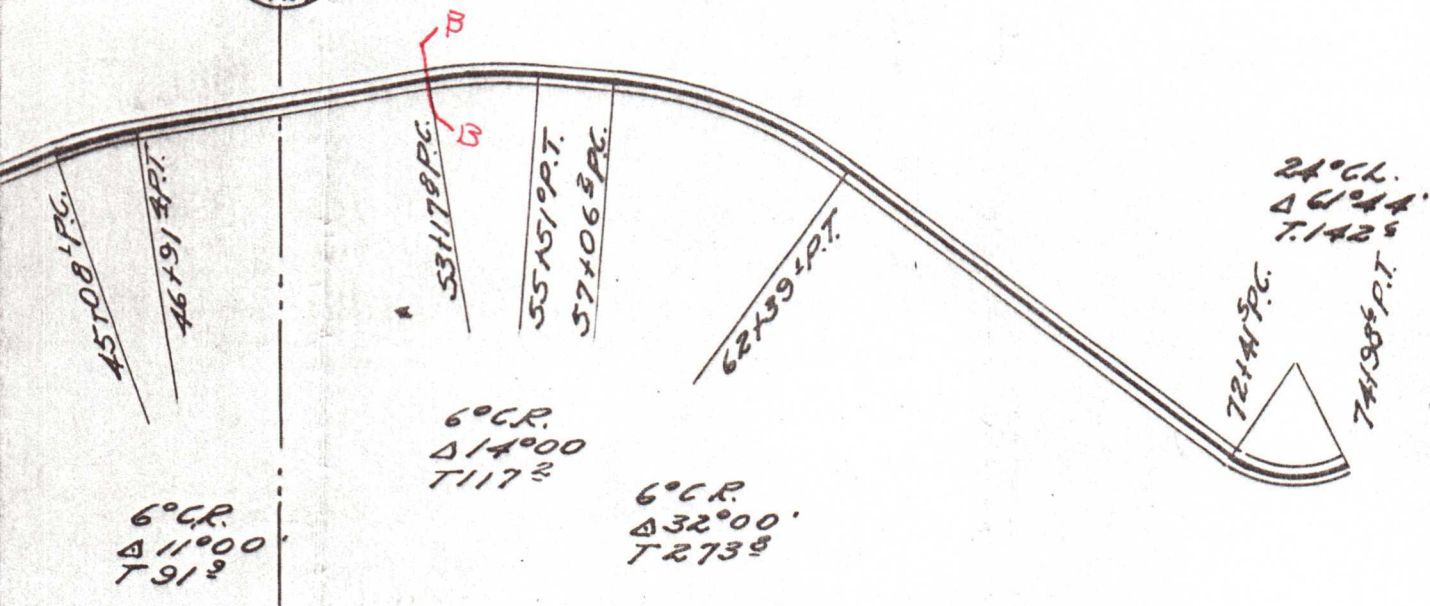
6° Cl.  
Δ 11° 00'  
T 91°

6° Cl.  
Δ 14° 00'  
T 117°

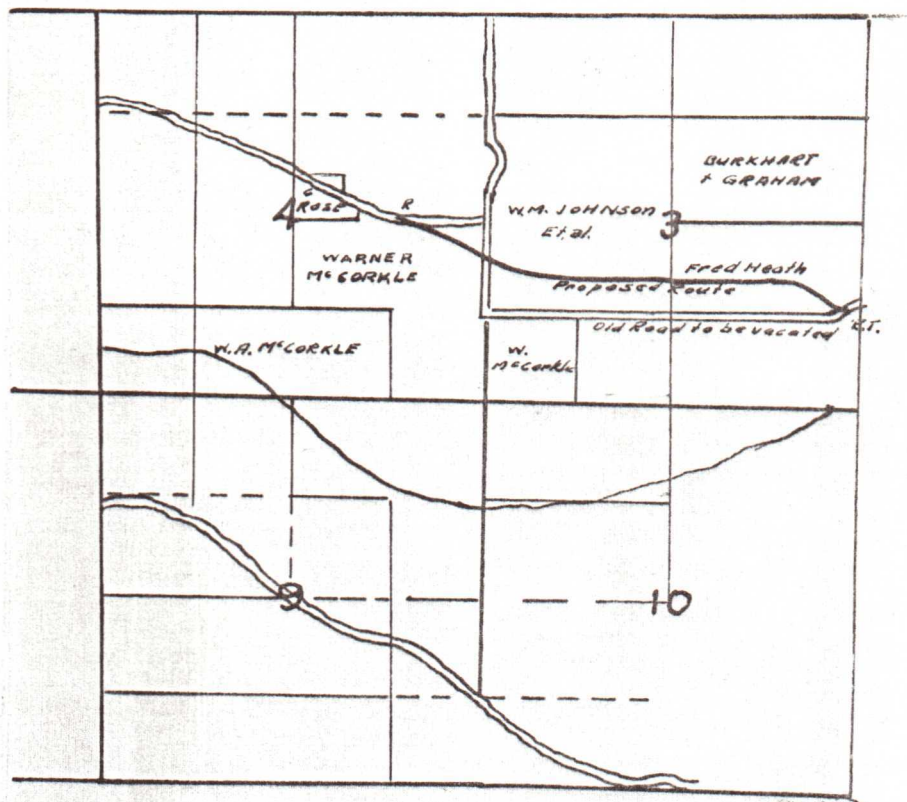
6° Cl.  
Δ 32° 00'  
T 273°

F.P.C.

Handwritten text at the bottom edge of the page, partially cut off.



Fred Heath



Sketch Map  
 of Proposed  
 Route of Road 906  
 TWSNR 36 EWM