

UMATILLA COUNTY

ROADMASTER'S OFFICE

PINE CREEK ROAD

CONSTRUCTED LINE

1"=400'

Oct. 10, 1923

27 26
34 35

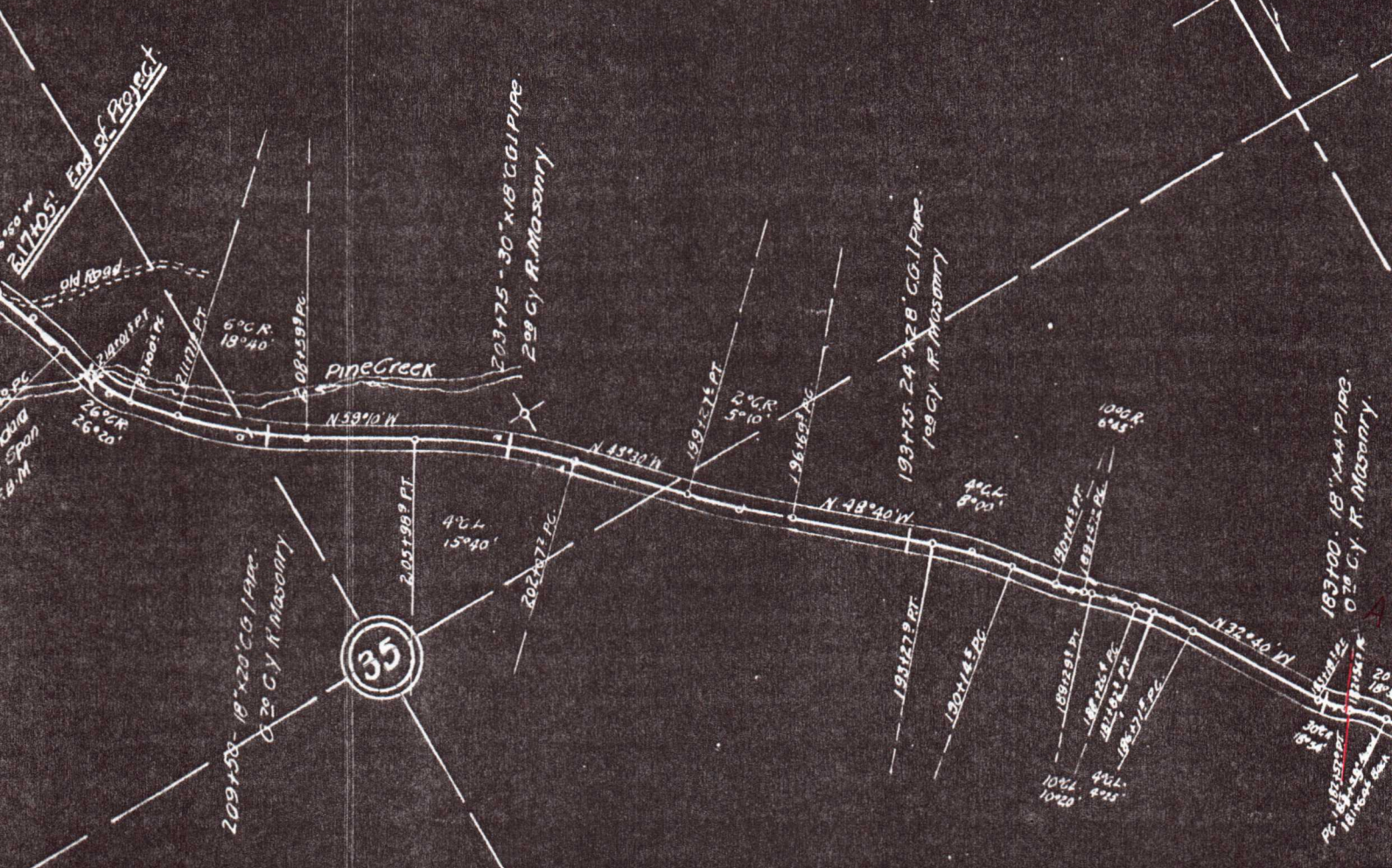
00277 M N 8000

21105: PL
21419: 22 PC
21400: Standard
25 Timber Span
10 1/2 M F.B.M.

N
00077 M N 6000

87027 N. 8000

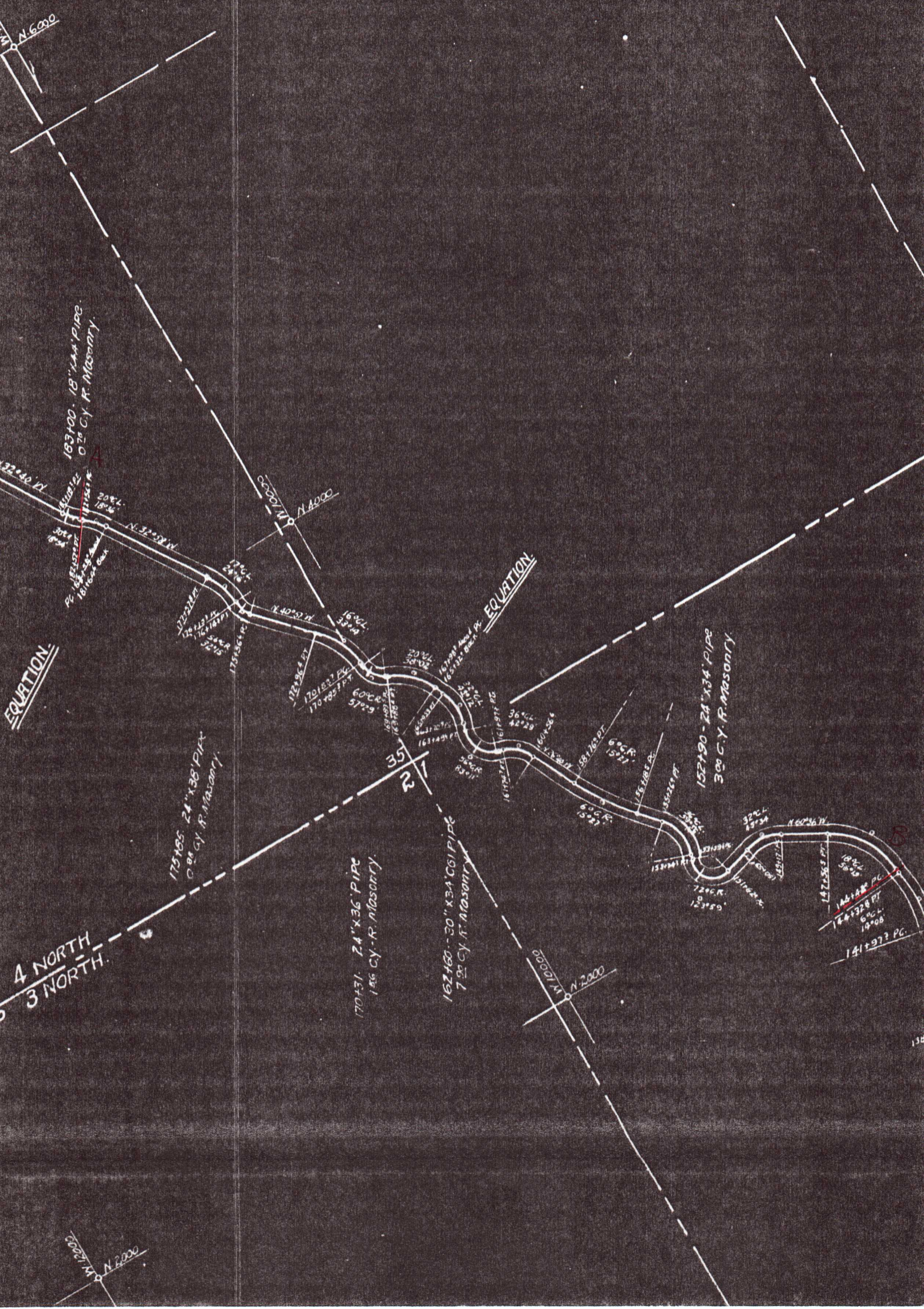
80001 N. 6000



TOWNSHIP 4 NORTH
TOWNSHIP 3 NORTH

87027 N. 8000

87027 N. 8000



N. 60° 00'

163100 - 18" x 144" PIPE
0.20 CY. R. MASONRY

N. 32° 52' W

66007 W N. 40° 00'

EQUATION

EQUATION

175185 - 24" x 36" PIPE
0.88 CY. R. MASONRY

170731 - 24" x 36" PIPE
1.56 CY. R. MASONRY

162160 - 20" x 34" COI PIPE
7.22 CY. R. MASONRY

152190 - 24" x 34" PIPE
3.28 CY. R. MASONRY

4 NORTH
3 NORTH

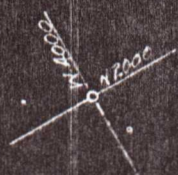
20001 W N. 20° 00'

N. 20° 00'

141197? PC
141328 PT
6° C.L.
19° 08'

138

RANGE 36-7E
C&N



6

86+00 PT
88+168 FT
117+49 FT
12+16+00
21+275 FT
50+740 - 18" x 30' PIPE
0.22 CY R. Masonry

80+195 - 18" x 30' PIPE
0.05 CY R. Masonry

45+41 - 18" x 36' PIPE
0.89 CY R. Masonry

42+50 - 18" x 36' PIPE
0.20 CY R. Masonry

36+48 - 18" x 36' PIPE
0.19 CY R. Masonry

34+00 - 18" x 36' CGI PIPE
1.25 CY R. Masonry

30+36 - 18" x 36' Pipe
1.05 CY R. Masonry

53+69 - 30" x 36' CGI PIPE
1.20 CY R. Masonry

58+50 - 24" x 32' CGI PIPE
1.21 CY R. Masonry

63+00 - 18" x 38' CGI PIPE
0.33 CY R. Masonry

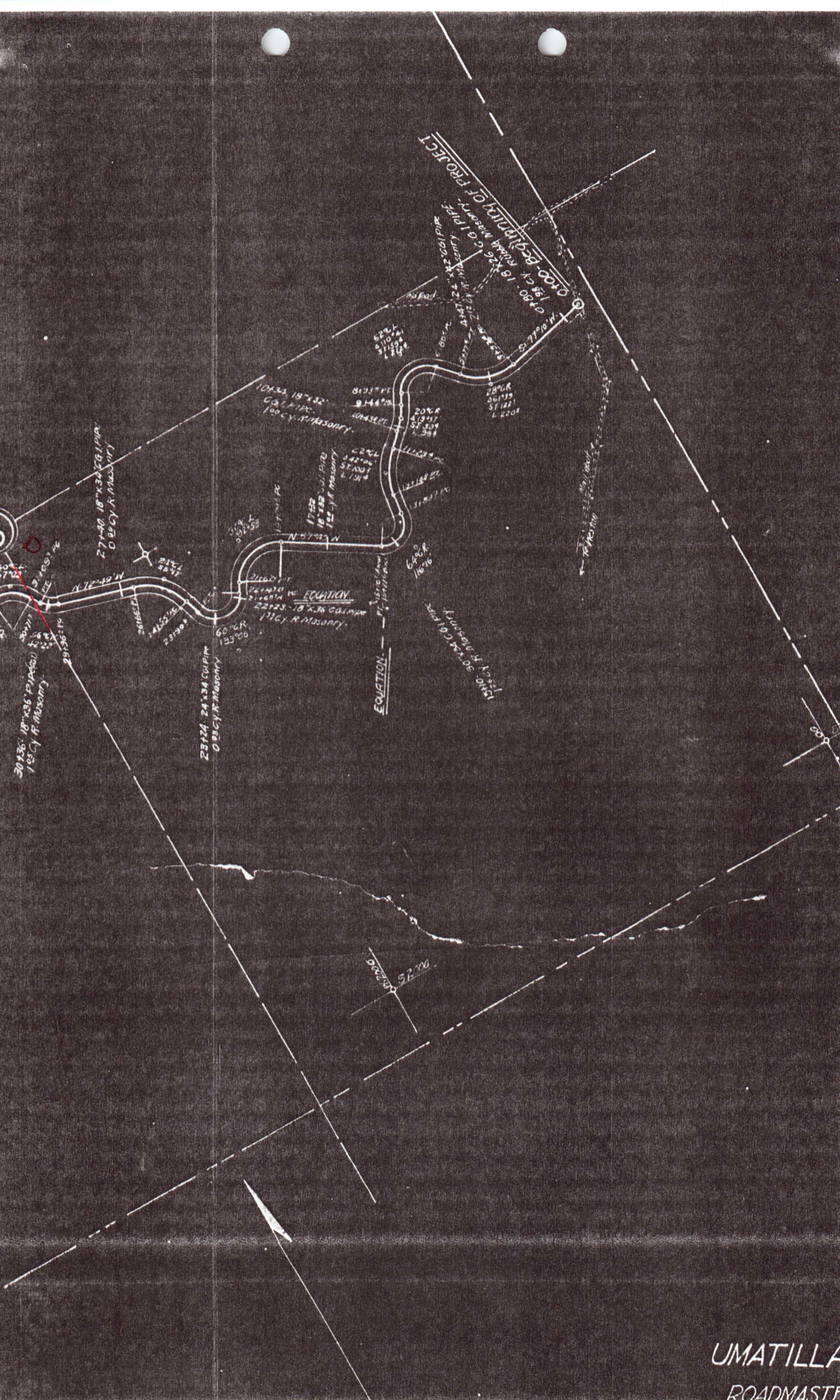
67+00 - 18" x 36' CGI PIPE
0.92 CY R. Masonry

74+50 - 18" x 34' PIPE
0.82 CY R. Masonry
72+88 - 18" x 38' PIPE
0.91 CY R. Masonry

EQUATION

69+00 - Standard 6 x 8
Timber - Cattle Pass
9.85 MFAM





0700-0821 MINIMUM OF PROJECT
 0780-18"x36" GALV PIPE
 155 CY R. MASONRY
 1/2" CY R. MASONRY

27140-18"x36" GALV PIPE
 0.65 CY R. MASONRY

30136-18"x36" GALV PIPE
 1.05 CY R. MASONRY

23114-24"x34" GALV PIPE
 0.95 CY R. MASONRY

10134-18"x32" GALV PIPE
 1.00 CY R. MASONRY

17122-18"x36" GALV PIPE
 1.25 CY R. MASONRY

22123-18"x36" GALV PIPE
 1.15 CY R. MASONRY

EQUATION

15100-30"x34" GALV PIPE
 1.50 CY R. MASONRY

57100