

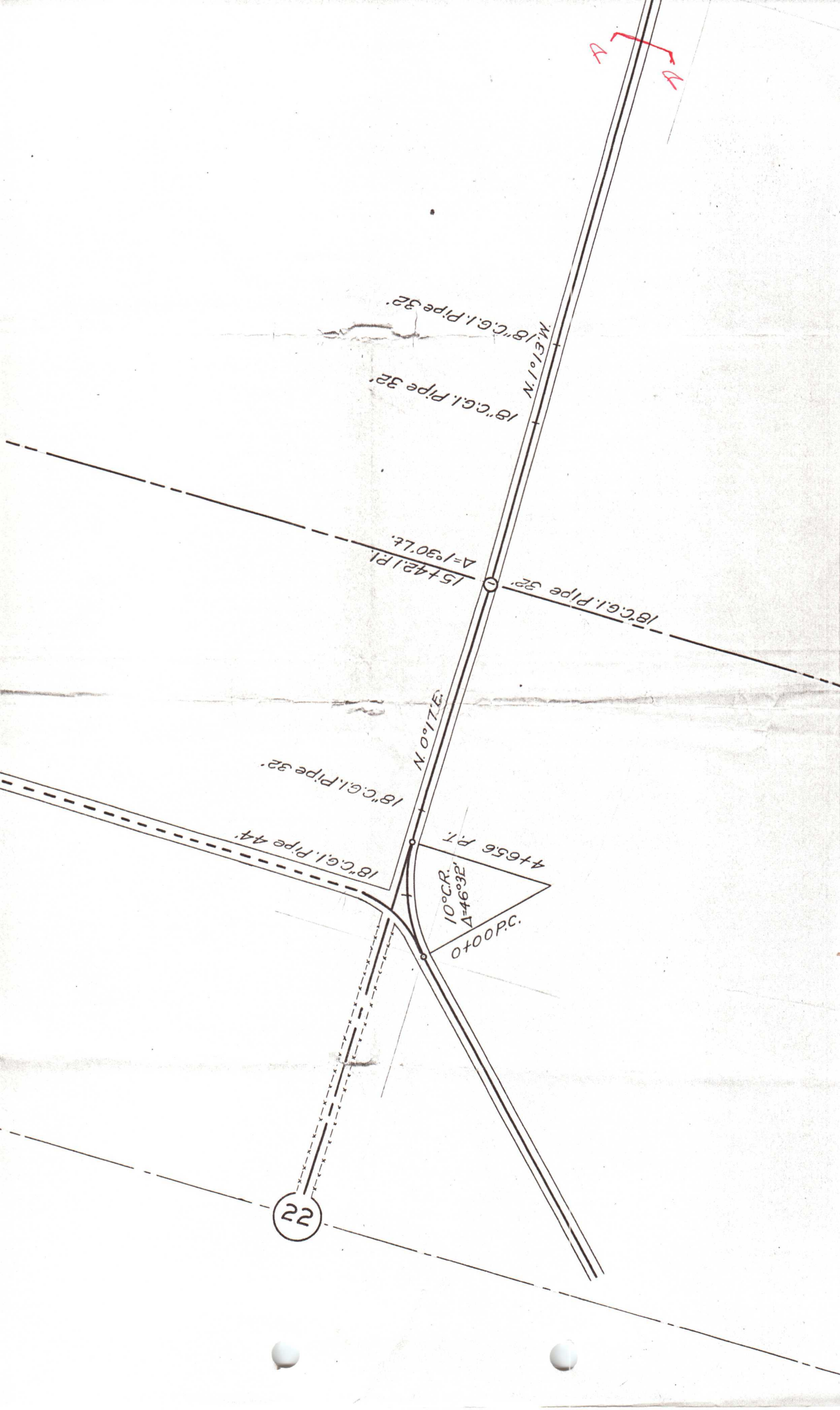
UMATILLA COUNTY OREGON
COUNTY ENGINEER'S OFFICE
GERKING FLAT ROAD
CONSTRUCTED LINE

SCALE 1 IN.=400FT.

MAY 1929

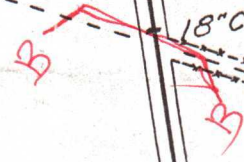


22





18" C.G.I. Pipe 32'



12" C.G.I. Pipe 30'

N. 26° 01' W.

36" C.G.I. Pipe 36'

12" C.G.I. Pipe 32'

12" C.G.I. Pipe 32'

EQUATION

59+90.0 P.O.T. =
59+85.0 P.T. =

49 C.L.
Δ = 124° 48'

53+65.0 P.C.

12" C.G.I. Pipe

1" Pipe 32'

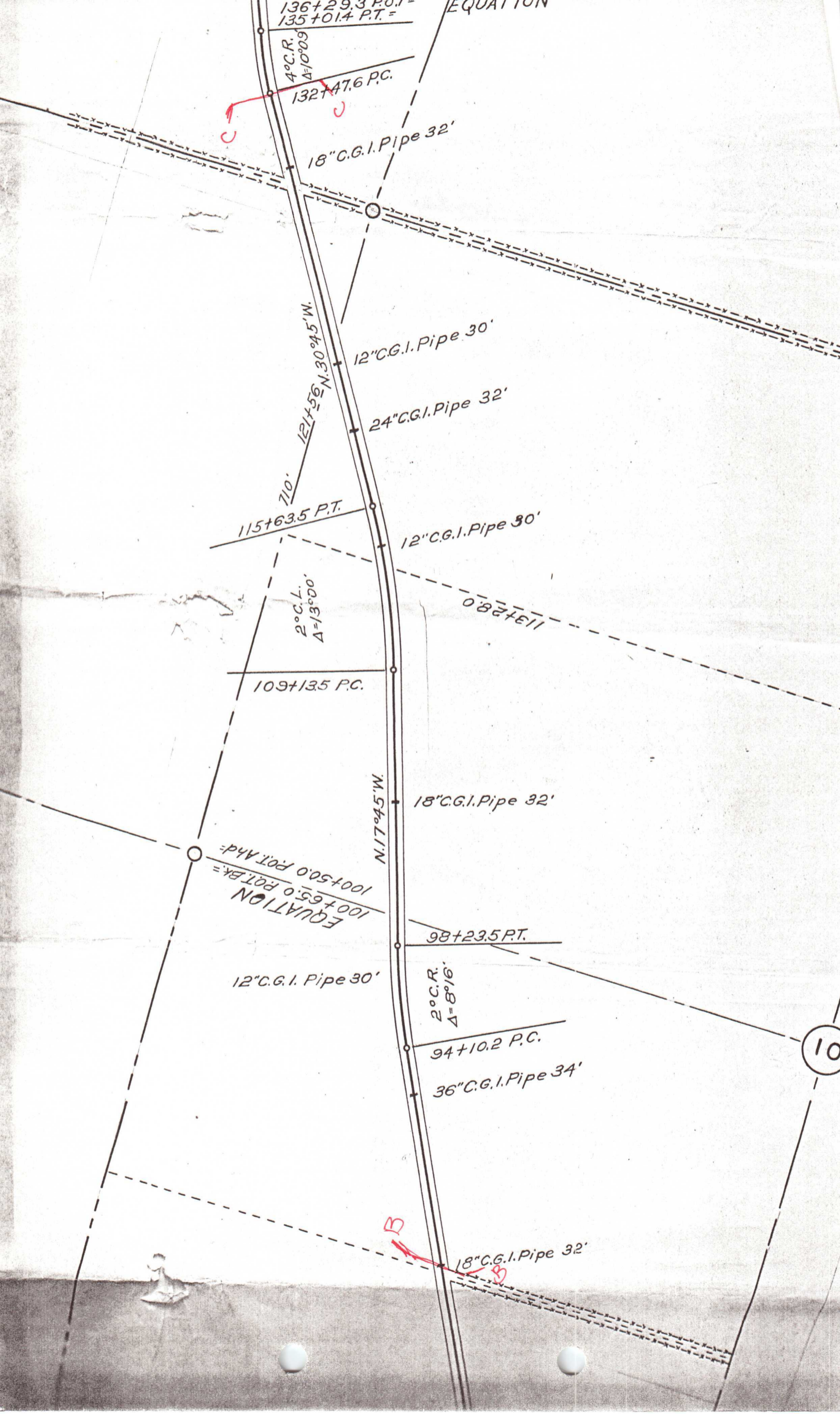
24" C.G.I. Pipe 32'

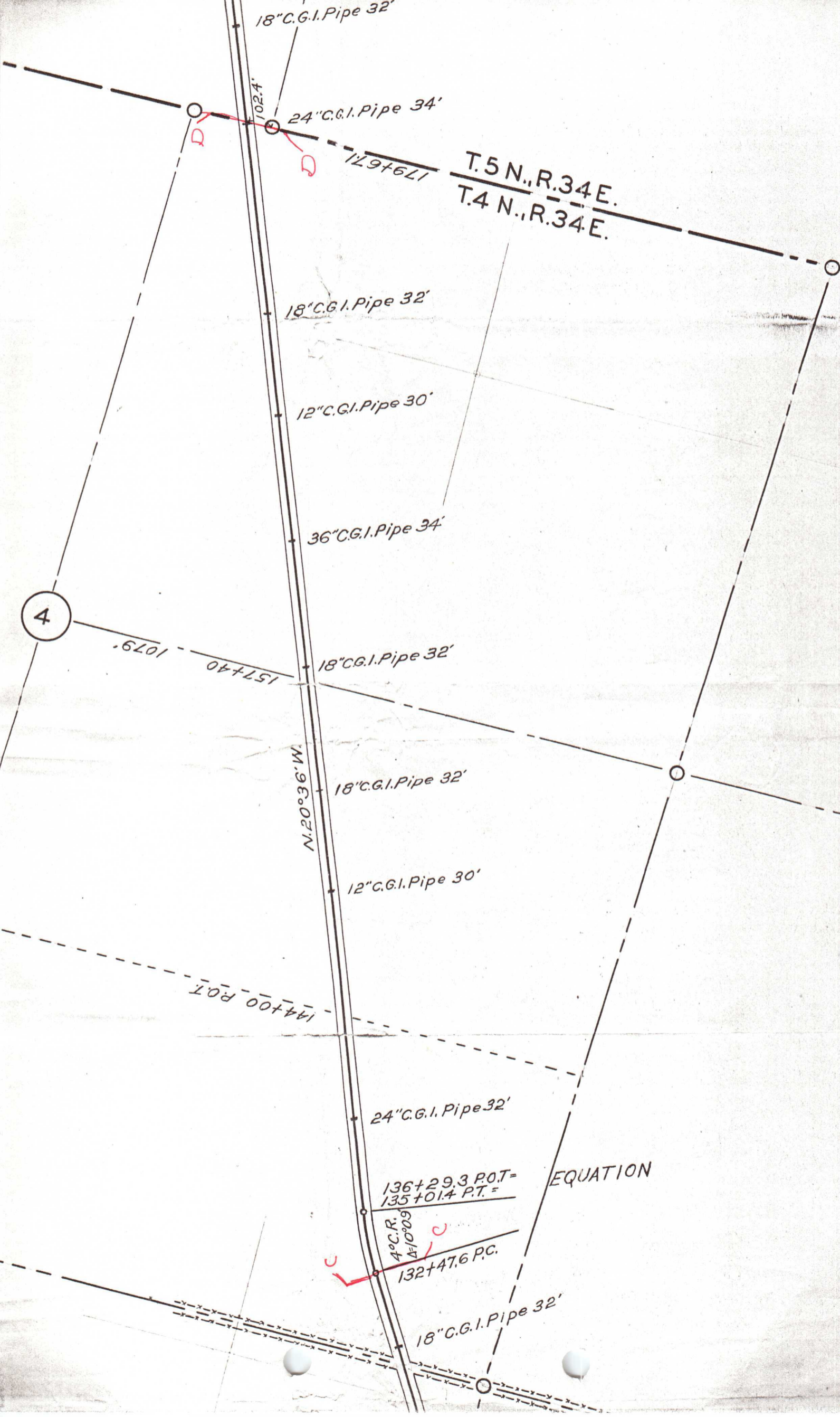
41+91.4 P.O.T.

5-1

18" C.G.I. Pipe 32'







18" C.G.I. Pipe 32'

102.4'

24" C.G.I. Pipe 34'

129+6.11

T.5 N., R.34 E.
T.4 N., R.34 E.

18" C.G.I. Pipe 32'

12" C.G.I. Pipe 30'

36" C.G.I. Pipe 34'

18" C.G.I. Pipe 32'

4

1079.6

157+4.0

N.20°36'W

18" C.G.I. Pipe 32'

12" C.G.I. Pipe 30'

144+0.0 P.O.T.

24" C.G.I. Pipe 32'

136+29.3 P.O.T.
135+01.4 P.T. =

EQUATION

4° C.R.
410°09'

132+47.6 P.C.

18" C.G.I. Pipe 32'

