

UMATILLA COUNTY ROAD DEPARTMENT  
 GERMAN HALL-MYRICK MKT ROAD  
 & My

NO. 50.

Proj. No. 30W50-A.

March-May 1930  
 Scale 1"=400'

Approved.

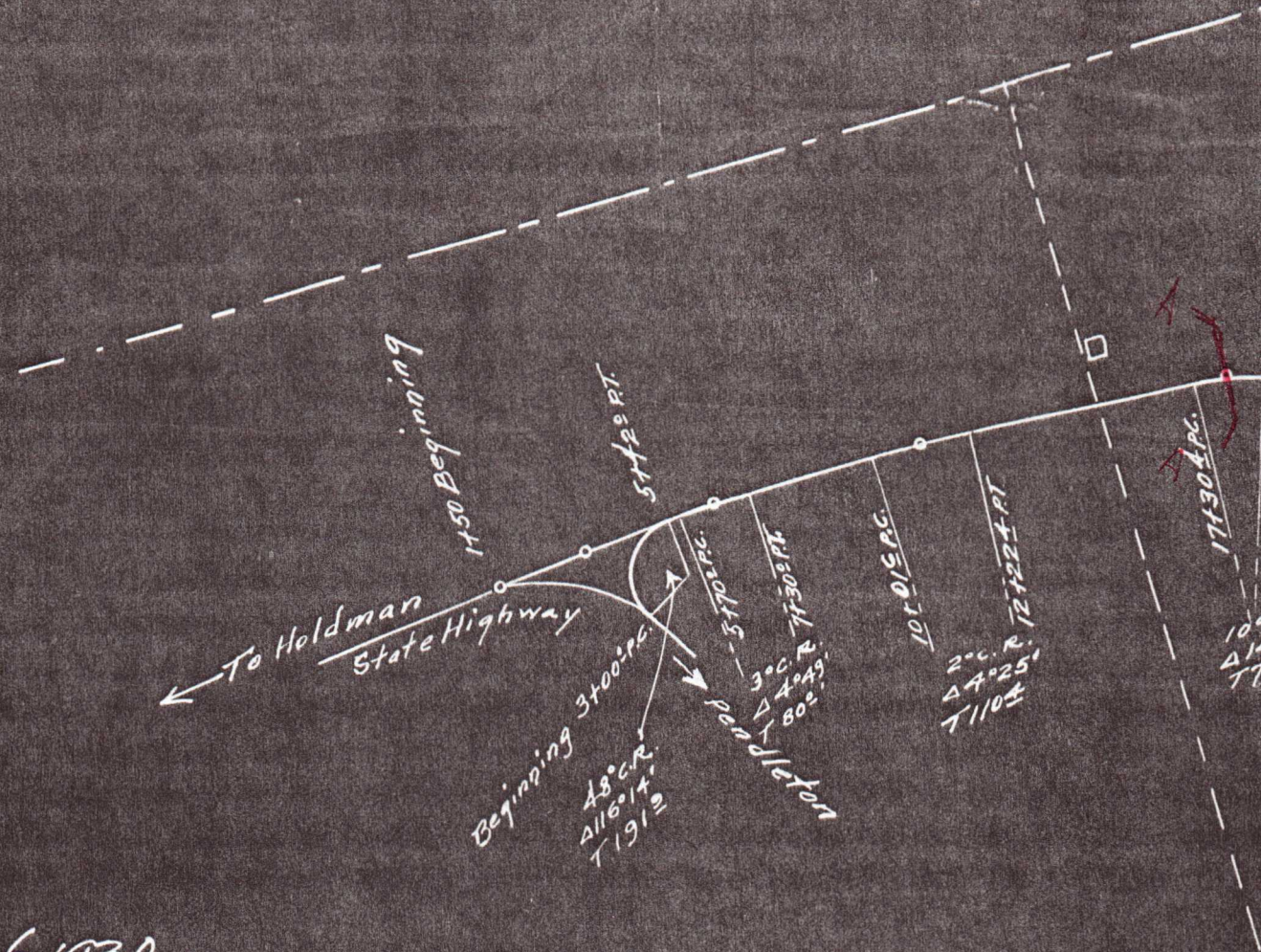
J. M. Schanney  
 County Judge

J. W. ...  
 Market Road  
 Oregon St

A. E. ...  
 Commissioner

...  
 Commissioner

Surveyed By W. E. O. Griger & Ransom.  
 Drafting By W. E. O. Griger



Filed Oct. 6, 1930  
 R. T. Dacey  
 Clerk

MENT

DAD.

Myrick-Reuther Corner. No 54

*[Signature]*  
Road Engineer  
State Highway Dept.



*[Signature]*

122

□ German Hall

48+802 Bridge  
49+303

49+298 P.C.  
50+608 P.T.

120 C.R.  
Δ 15° 43'  
T 659

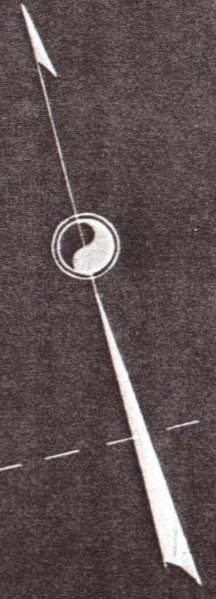
69+053 P.C.

4° C.L.  
Δ 14° 37'  
T 1932

72+701 P.T.

97+032 P.C.

6L  
29'  
42



2

97103.9 P.C.

98110.5 P.T.

4° C.R.  
Δ 4° 16'  
T 533

100162.8 P.C.

6° C.R.  
Δ 22° 48'  
T 1926

107112.8 P.T.

6° C.L.  
Δ 10° 03'  
T 843

132122.9 P.C.

133189.5 P.T.

140165.5 P.C.

171176.2 P.T.

10° C.R.  
Δ 15° 57'  
T 803

3

4

6

1401165 P.C.  
1711769 P.T.  
10° C.R.  
Δ 15° 57'  
T 803'

1681679 P.C.  
1701462 P.T.  
10° C.L.  
Δ 10° 00'  
T 896'

1831265 P.C.  
1851944 P.T.  
4° C.L.  
Δ 10° 43'  
T 1344'

1901996 P.C.  
1921742 P.T.  
10° C.L.  
Δ 17° 30'  
T 882'

23/24

10° CL.  
Δ 17° 30' L  
T 88 2

190 + 99 6 RC  
192 + 74 5 PT.

TOWNSHIP 4N.32E.W.M.

TOWNSHIP 4N.33E.W.M.

TOWNSHIP 4N.40° 1/2

24 19  
25 30

237 + 018 P. 1. 40° 1/2 Lt.

237 + 018 P1.40°12'4"

19 20  
30 29

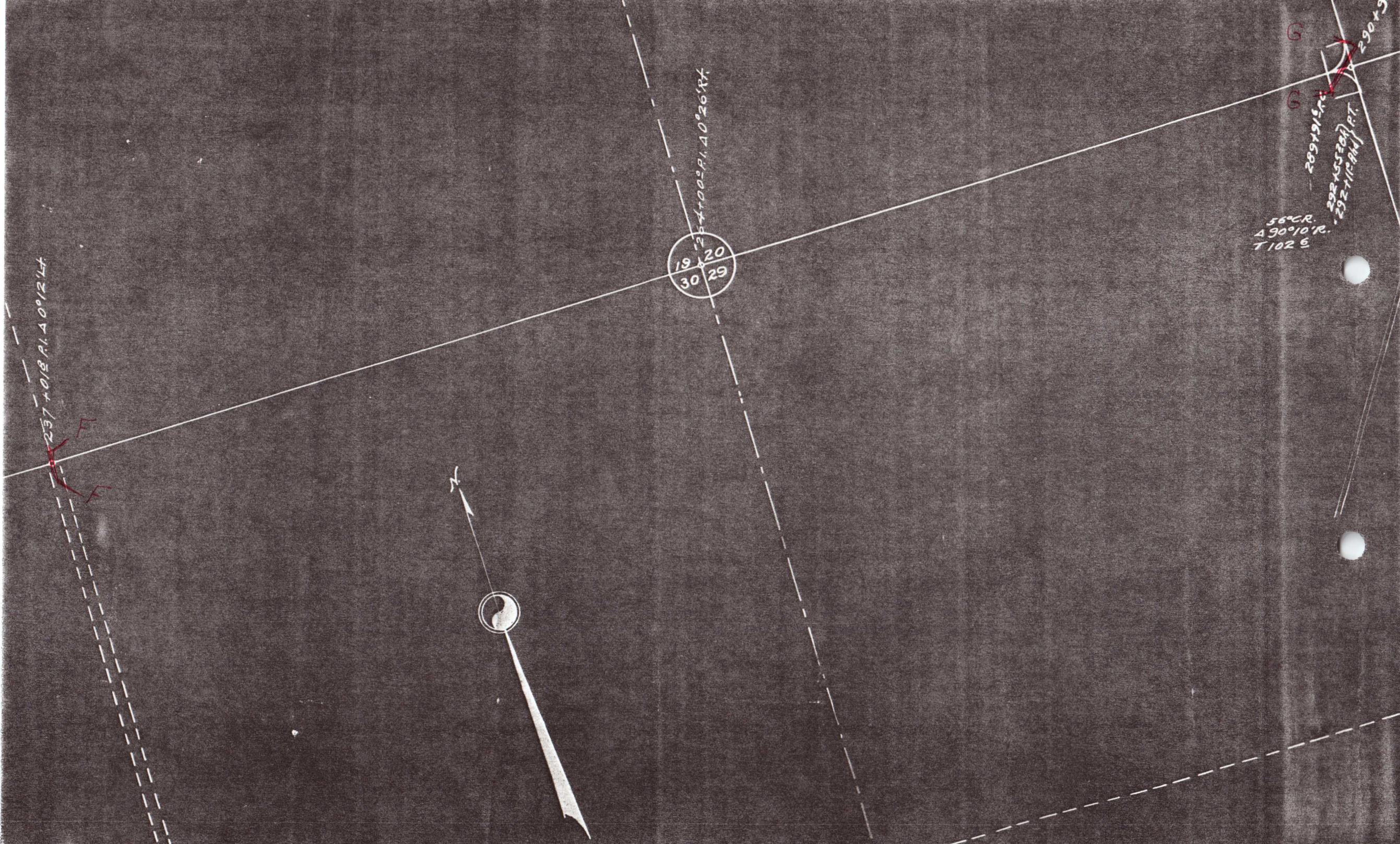
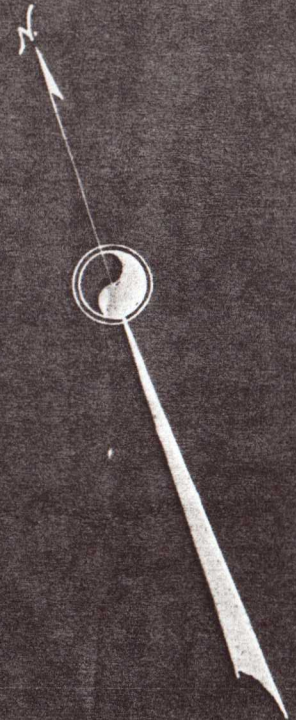
254 + 000 P1.40°26'4"

56°CR.  
490°10'R.  
T102 S

289 + 915 P1.

292 + 553 P1.  
292 + 711 P1.

290 + 9



Myrick

German Hall-Myrick #50 ends at Stn 2  
Myrick- Reuther Corner #54 begins  
Road South from Stn 290+94  
a market road

56° C.R.  
Δ 90° 10' R.  
T 102 S

289+91 S.C.  
292+55 S.B.P.  
292+115 P.T.

290+94

295+96

299+10° P.O.T. & Track.

316-59 S.P.I. Δ 0° 12' Lt.

Corner

Reuther Corner Market Road #4  
and  
Reuther Corner Market Road #4  
begin  
German Hall Mkt Rd #37

40° C.L.  
Δ 90° 05'  
T 143 S

342+44 S.C.  
346+133 B.P.  
345+513 P.T.



40° C.L.  
Δ 90° 05'  
T1433

342 + 444 PC  
346 + 133 BK } P.T.  
345 + 513 End

369 + 570 P. 1. Δ 0° 42' H

388 + 000 End County Road

