

UMATILLA COUNTY ROAD DEPARTMENT
CAYUSE-THORNHOLLOW
Scale 1"-400" April 1, 1931

J. M. Schamper
County Judge

R. E. Dean
Commissioner

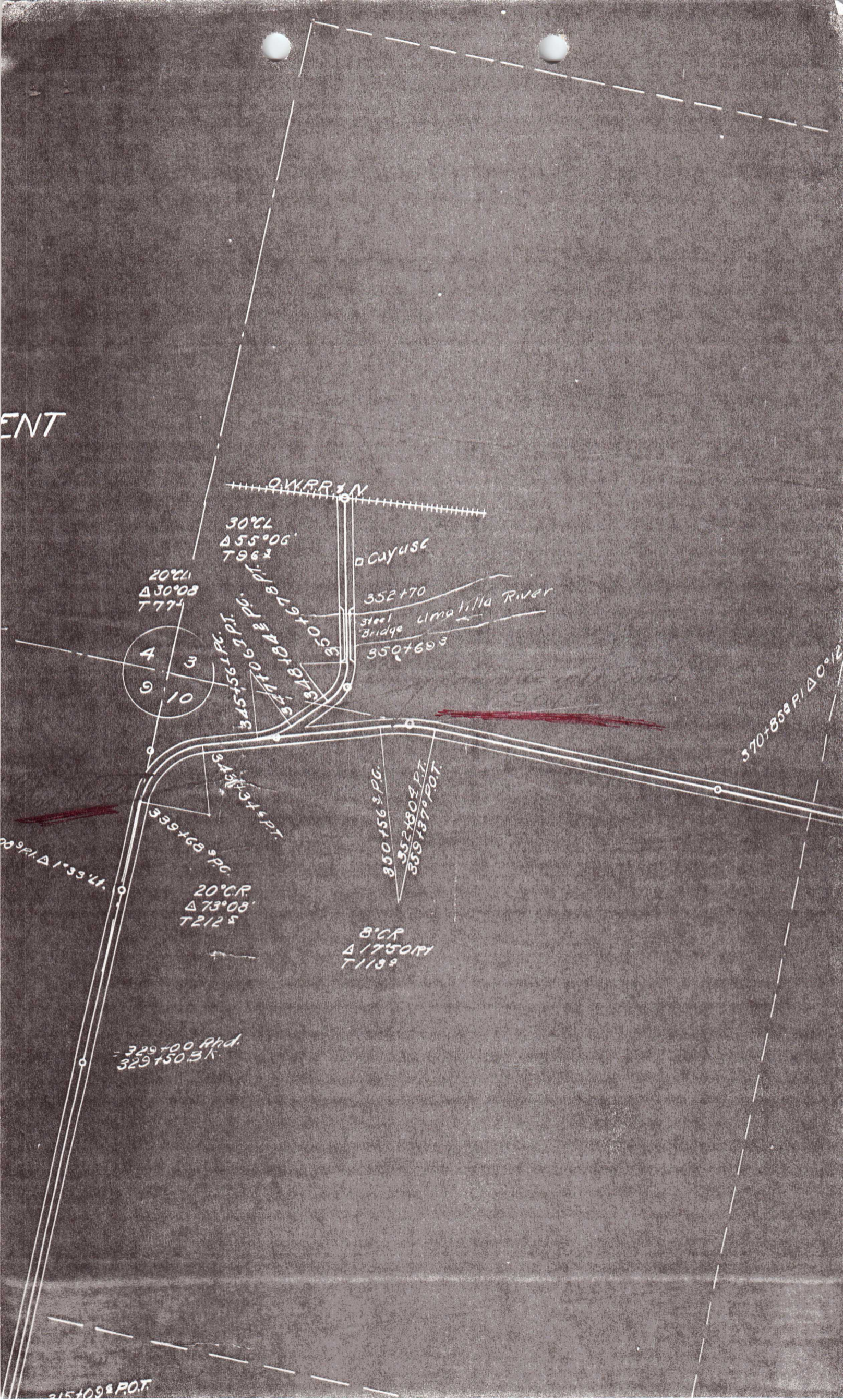
J. O. Hales
Commissioner

J. H. Scott
Oregon State Market Road Engineer

W. Edinger
Roadmaster

3364089/1 Δ 1'33

ENT



Q.V. RR. 1 N

30°CL
Δ 55°06'
T 96.2

Cayuse

20°CL
Δ 30°08'
T 77.4

352+70

Steel Bridge Umatilla River

350+69.3

4
3
9
10

345+56.1 P.C.
345+56.1 P.T.

348+19.1 P.C.
348+19.1 P.T.

370+85.8 P.I. Δ 0°12'

350+56.3 P.C.
352+80.2 P.T.
350+56.3 P.O.T.

345+56.1 P.C.
345+56.1 P.T.

20°CR
Δ 73°08'
T 212.5

8°CR
Δ 175°01'
T 113.9

329+00 Rhd.
329+50.3 K.

315+09 P.O.T.