

NARRATIVE

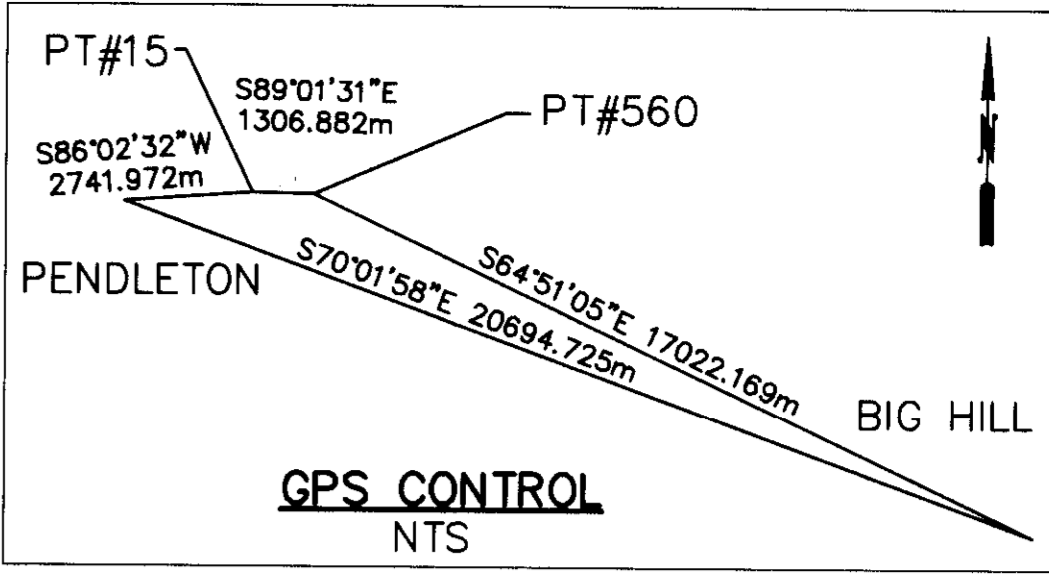
THE PURPOSE OF THIS SURVEY IS TO MONUMENT THE RIGHT OF WAY OF THE FRONTAGE ROAD CONVEYED TO THE STATE OF OREGON, BY AND THROUGH ITS DEPARTMENT OF TRANSPORTATION, BY DEEDS RECORDED NOVEMBER 18, 2002, INSTRUMENT NO. 2002-4240502 AND RECORDED FEBRUARY 28, 2003, INSTRUMENT NO. 2003-4310341, UMATILLA COUNTY DEED RECORDS, AND TO MONUMENT THE CENTERLINE OF THE NEW RAILROAD CROSSING.

BASIS OF BEARINGS WAS ESTABLISHED BY GPS IN OCTOBER, 1999, HOLDING STATION "PENDLETON" FIXED AND CONSTRAINING THE NETWORK TO NGS HARN STATIONS "PENDLETON" AND "BIG HILL". THE HORIZONTAL DATUM IS OREGON COORDINATE SYSTEM, NORTH ZONE #3601, NAD83(91). THE STATE PLANE COORDINATES OF THE GPS NETWORK POINTS WERE CONVERTED TO LOCAL DATUM PLANE (LDP) COORDINATES BY DIVIDING STATE PLANE COORDINATES BY THE COMBINED SCALE FACTOR FOR EACH POINT. ALL BEARINGS ARE GRID, AND ALL DISTANCES REPRESENT TRUE GROUND DISTANCES IN METERS.

I COMPUTED THE RIGHT OF WAY OF THE O.W.R.R. & N. CO. RAILROAD USING DATA FROM SURVEY NO. 00-157-C, WHICH SURVEY REFERENCES THE "RIGHT-OF-WAY AND TRACK MAP", DATED JUNE 30, 1918 AND FOUND AT THE UMATILLA COUNTY ASSESSOR'S OFFICE, TOGETHER WITH A MORE RECENT RAILROAD MAP FOUND AT THE CITY OF PENDLETON ENGINEERING DEPARTMENT.

I MONUMENTED THE FRONTAGE ROAD RIGHT-OF-WAY AND THE CROSSING CENTERLINE AS PER CLIENT INSTRUCTIONS AND THE ABOVE CITED INSTRUMENTS.

NOTE: SAID INSTRUMENTS ARE WRITTEN IN INTERNATIONAL FEET. TO CONVERT METERS TO INTERNATIONAL FEET, DIVIDE METERS BY 0.3048 EXACTLY.

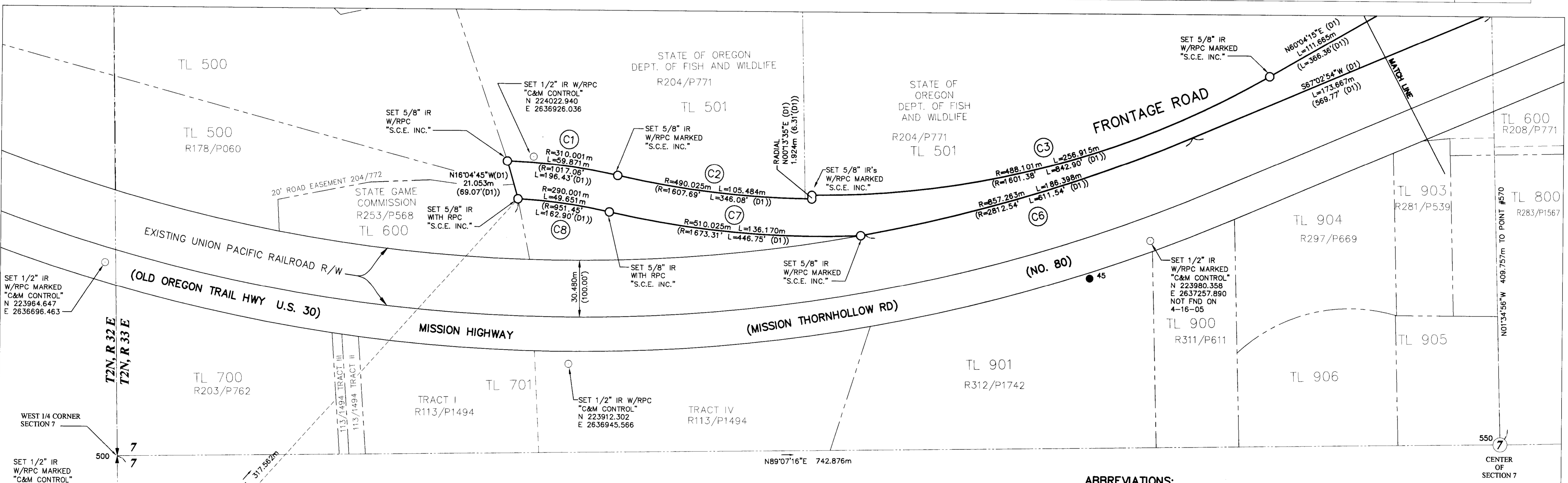


MONUMENT RECOVERY

PNT NO	NORTHING	EASTING	DESCRIPTION	CONDITION
45	223959.974	2637225.432	FND 1-1/2" ALUMINUM CAP MARKED "WARM SPRINGS ROAD" BUREAU OF INDIAN AFFAIRS (BIA ROADS WARM SPRINGS)	STABLE, FLUSH
90	223763.916	2636705.674	FND 2-1/2" BC MARKED "W.C., 60.00 FEET, T2N, 1/4S12, R32E R33E, 1990, PLS 1106" GPS CONTROL BY WM R. WELLS	STABLE, UP 0.4'
109	224287.011	2637636.863	FND 5/8" IR, SET BY WILLIAM R. WELLS (SN 93-27-B)	UNSTABLE
500	223861.243	2636703.843	FND BC WEST 1/4 COR, SECTION 7, MARKED "U.S. GENERAL LAND OFFICE, PENALTY \$250 FOR REMOVAL, 1/4 S7, 1917"	STABLE, UP 0.4'
520	224124.665	2637616.006	FND 5/8" IR W/ YPC MARKED "LS 474" (CS 96-72-B)	
525	224291.749	2637836.385	FND 3" BC MARKED "U.S. DEPT. OF THE INTERIOR, UNLAWFUL TO DISTURB, N1/16 S7, 1988, CADASTRAL SURVEY, BUR. OF LAND MANAGEMENT"	STABLE, UP 0.4'
530	224077.211	2637503.432	FND 5/8" IR SET BY WILLIAM R. WELLS (CS 85-92-B)	
550	223872.637	2637446.632	FND 3" BC MARKED "U.S. DEPT. OF THE INTERIOR, UNLAWFUL TO DISTURB, T2N R33E, C1/4 S7, 1988, CADASTRAL SURVEY, BUR. OF LAND MANAGEMENT"	STABLE, UP 0.2'
560	223890.068	2638252.258	FND 3" BC MARKED "U.S. DEPT. OF THE INTERIOR, UNLAWFUL TO DISTURB, T2N R33, S7 S8, 1988, CADASTRAL SURVEY, BUR. OF LAND MANAGEMENT"	STABLE, UP 0.1'
570	224282.238	2637435.318	FND 3" BC MARKED "U.S. DEPT. OF THE INTERIOR, UNLAWFUL TO DISTURB, N1/16 S7, 1988, CADASTRAL SURVEY, BUR. OF LAND MANAGEMENT"	STABLE, UP 0.4'
BIG HILL	216656.186	2653660.866	USC&GS STANDARD DISK SET IN CONCRETE MARKED "BIG HILL 1916 1963 9 14 96 9 17 97"	GOOD
PENDLETON	223723.052	2634210.132	USC&GS STANDADARDBRASS DISK IN CONCRETE STAMPED "PENDLETON 1963"	GOOD

HISTORICAL REFERENCES

REFERENCE NO.	YEAR	DESCRIPTION	SURVEYOR
R1	1985	CS 85-92-B	WILLIAM R. WELLS
R2	1993	CS 93-27-B	WILLIAM R. WELLS
R3	1996	CS 96-72-B	PHILIP J. LARSON
R4	2005	CS 00-157-C	WILLIAM R. WELLS



CURVE TABLE

CURVE NO.	CHORD BEARING	CHORD LENGTH	DELTA
C1	S82°58'14"E	59.778	11°03'56"
C2	S83°36'16"E	105.280	12°20'01"
C3	N75°08'59"E	253.959	30°09'29"
C4	S70°38'47"W	70.020	7°51'26"
C5	S70°38'47"W	135.518	7°51'26"
C6	S73°16'39"W	186.031	12°27'29"
C7	N85°05'11"W	135.766	15°17'50"
C8	N82°20'33"W	49.590	9°48'34"

RECORD OF SURVEY FOR FRONTAGE ROAD MONUMENTATION

LOCATED IN THE NE AND NW 1/4 OF SECTION 7, TOWNSHIP 2 NORTH, RANGE 33 EAST, OF THE WILLAMETTE MERIDIAN, UMATILLA COUNTY, OREGON

LEGEND

- 1/4 SECTION CORNER
- FOUND MONUMENTS AS NOTED
- SET 5/8" X 30" IRON ROD (IR) WITH CAP AS NOTED
- SET 1/2" X 30" IRON ROD (IR) WITH CAP AS NOTED

ABBREVIATIONS:

- AC 1-1/2" ALUMINUM CAP
- ALUM ALUMINUM
- BC BRASS CAP
- BLM BUREAU OF LAND MANAGEMENT
- CONC CONCRETE
- USC&GS US COAST AND GEODETIC SURVEY
- CS UMATILLA COUNTY SURVEY
- S.C.E. INC. SUZANNE CRANE ENGINEERING, INC.
- HWY HIGHWAY
- IR IRON ROD
- m METERS
- P.O.B. POINT OF BEGINNING
- PT POINT
- R/W RIGHT-OF-WAY
- R RADIUS
- RPC RED PLASTIC CAP
- D1 DOCUMENT NO. 2002-4240502
- D2 DOCUMENT NO. 2003-4310341
- () DENOTES RECORD DATA PER REFERENCE DOCUMENTS
- (M) DENOTES MEASURED DATA

RECEIVED BY
Umatilla County Surveyors
Date 8-05
Revised by RK
No. 05-154-C

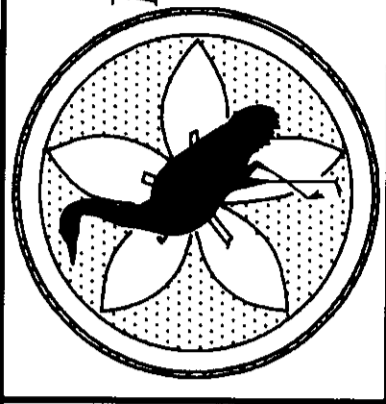
SCALE: 1:10,000

RECEIVED BY
Umatilla County Surveyors
METRIC SURVEY

JVT DESIGNED	12/1/2004
DATE	
BLS DRAWN	5/25/2005
DATE	
JVT CHECKED	5/25/2005
DATE	

REVISIONS

S.C.E. INC. dba
CRANE & MERSETH
Engineering/Surveying
6566 SE LAKE RD., SUITE D
MILWAUKEE, OREGON 97222
PH: (503) 654-2005
FAX: (503) 654-2575



PROFESSIONAL LAND SURVEYOR
John V. Johnson
JAN 1988
RENEWAL 6/23-05

URS GREINER WOODWARD
UMATILLA COUNTY
UMATILLA COUNTY LEGALIZATION
MISSION FRONTAGE HIGHWAY, STATE ROUTE 11

CLIENT:
URS GREINER WOODWARD
111 SW COLUMBIA - SUITE 900
PORTLAND, OR 97201-4014
503-222-7200